

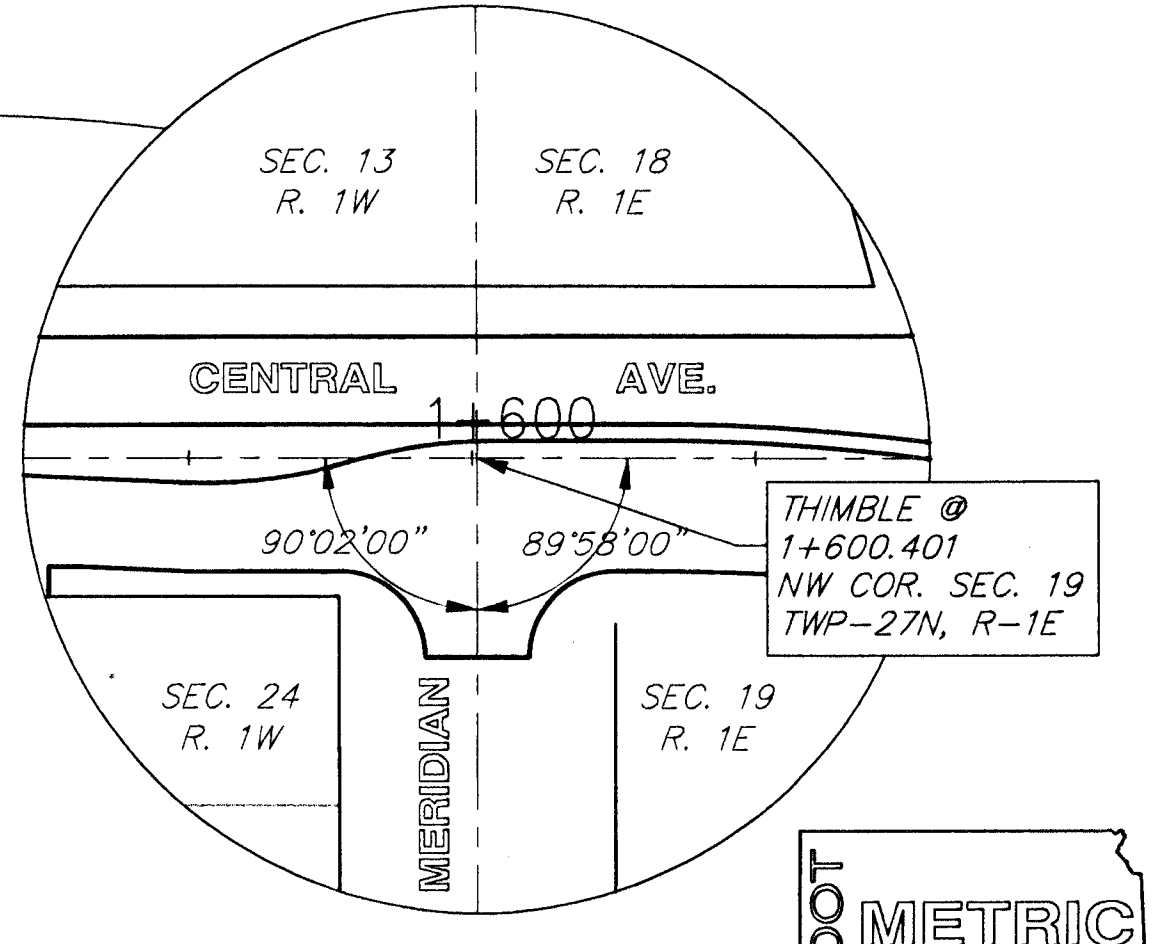
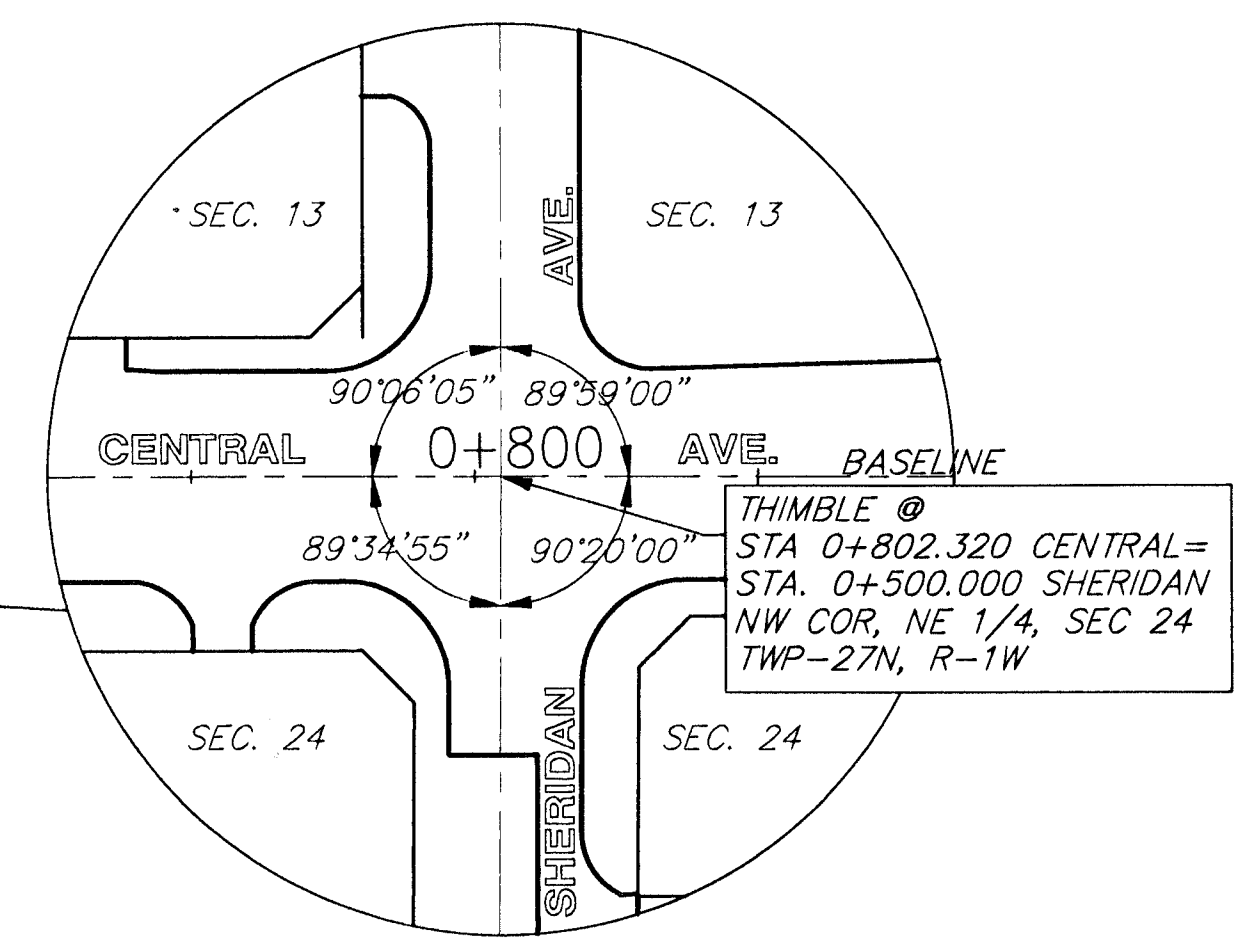
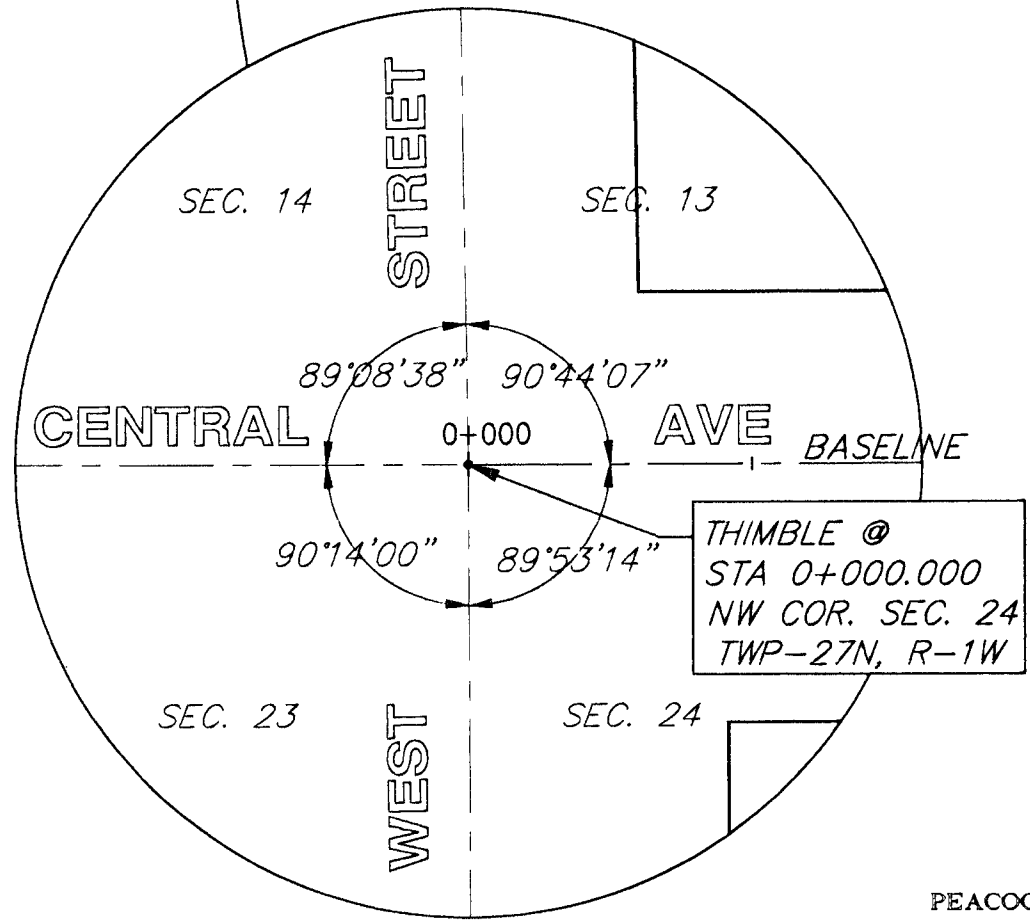
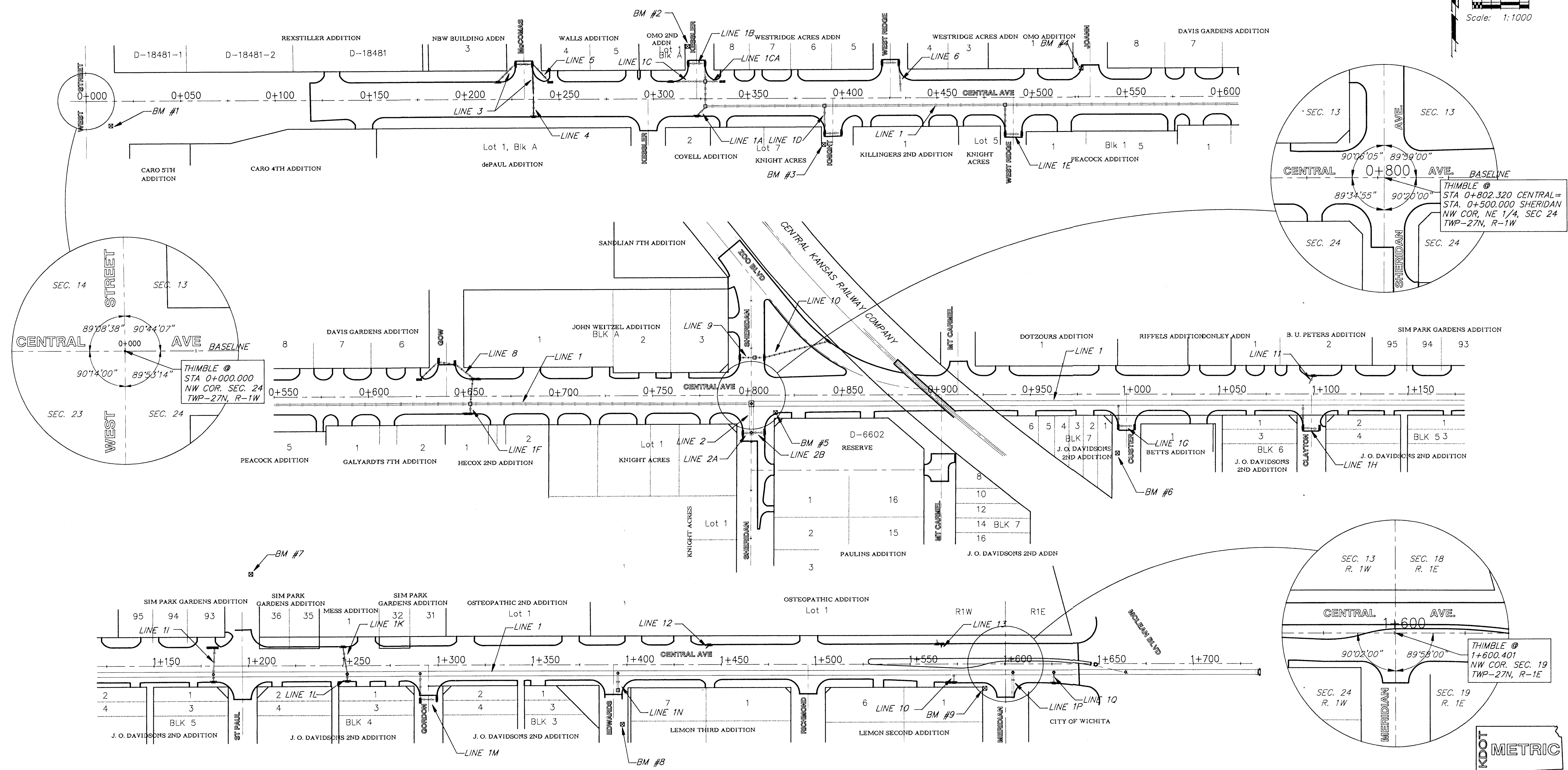
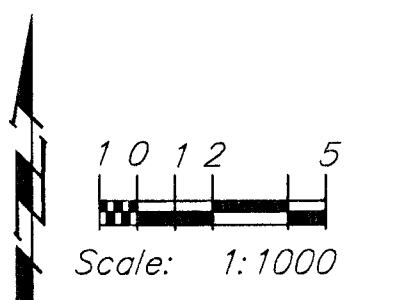
FHWA REGION NO.	STATE	PROJECT NO.	FISCAL YEAR	SHEET NO.	TOTAL SHEETS
7	KANSAS	87N-0094-01	1998	2	202

BENCHMARKS

- BM #1 - City Disc Located @ 18.47m Southeast of the Section Corner Monument @ the Intersection of Central and West Street. Elev. = 399.073 SI Units (1309.28 MSL Datum)
- BM #2 - "□" Top of Curb @ 4.72m West and 27.83m North of the Centerline of both Central and Kessler. Elev. = 398.546 SI Units (1307.55 MSL Datum)
- BM #3 - "□" Top of Curb @ 4.72m East and 24.69m South of the Centerline of both Central and Knight. Elev. = 398.558 SI Units (1307.59 MSL Datum)
- BM #4 - "□" Top of Curb @ 15.24m North and 4.72m West of the Centerline of both Joann and Central. Elev. = 398.589 SI Units (1307.69 MSL Datum)
- BM #5 - City Disc Located @ 9.14m South and 12.8m East of the Centerline of both Sheridan and Central. Elev. = 399.012 SI Units (1309.08 MSL Datum)
- BM #6 - "□" Top of Curb @ 31.09m South and 4.72m West of the Centerline of both Custer and Central. Elev. = 398.607 SI Units (1307.75 MSL Datum)
- BM #7 - "□" Top of Curb @ 48.62m North and 4.72m East of the Centerline of both St. Paul and Central. Elev. = 398.144 SI Units (1306.23 MSL Datum)
- BM #8 - "□" Top of Curb @ 31.39m South and 4.72m East of the Centerline of both Edwards and Central. Elev. = 397.997 SI Units (1305.75 MSL Datum)
- BM #9 - City Disc Located @ 12.89m South and 10.91m West of the Centerline of both Meridian and Central. Elev. = 397.379 SI Units (1303.71 MSL Datum)

CENTRAL AVENUE STREET & SWS IMPROVEMENTS

KEY SHEET



PROJECT NUMBER 472 - 82906				PROJ NUMBER 95.05 E026		CAPITAL IMPROVEMENT PROJECT CENTRAL AVENUE		BAUGHMAN COMPANY P. A. ENGINEERING, SURVEYING, & PLANNING 318-282-7271 • 315 ELLIS • WICHITA, KANSAS 67211		SHEET 2 OF 202	
DESIGN JFB/TMG	DRAWN TMG	APPROVED JFB	DATE NOV 98	SCALE NOTE	SHEET NAME KEY						