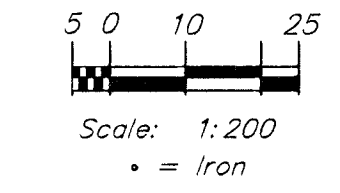
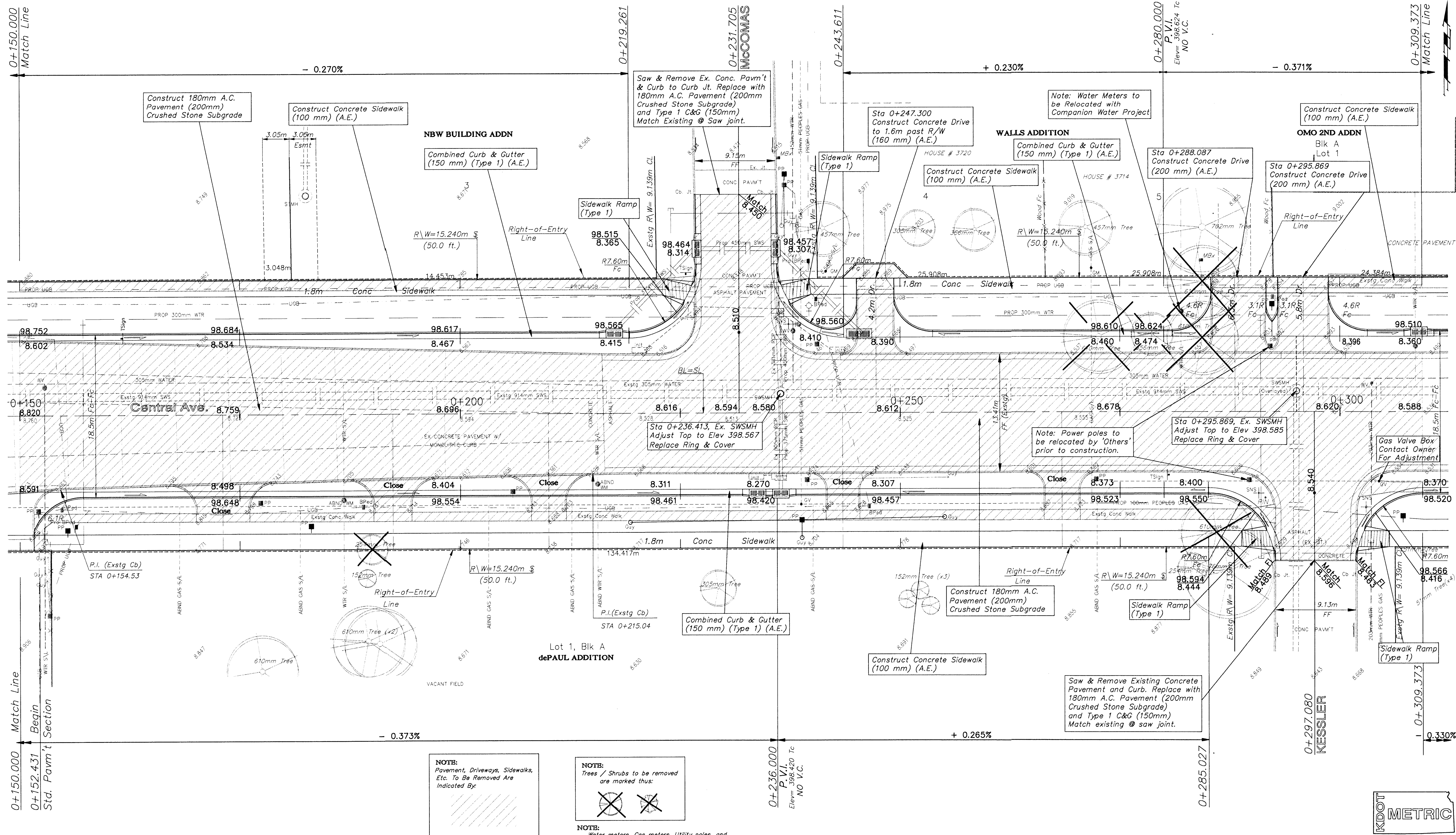


BENCHMARKS

BM #2 - " " Top of Curb @ 4.72m West and 27.83m North of the Centerline of both Central and Kessler.
Elev. = 398.546 SI Units (1307.55 MSL Datum)



FHWA REGION NO.	STATE	PROJECT NO.	FISCAL YEAR	SHEET NO.	TOTAL SHEETS
7	KANSAS	87N-0094-01	1998	8	202



NOTE:
Pavement, Driveways, Sidewalks, Etc. To Be Removed Are Indicated By:

NOTE:
Trees / Shrubs to be removed are marked thus:

NOTE:
Water meters, Gas meters, Utility poles, and Electrical Junction pedestals, boxes, etc. are to be REMOVED and RELOCATED as necessary by the respective utility company/owner PRIOR TO CONSTRUCTION of this project.

PROJECT NUMBER 472 - 82908				
DESIGN STAFF	DRAWN SONNY	APPROVED JFB	DATE NOV 98	SCALE NOTED

CAPITAL IMPROVEMENT PROJECT
CENTRAL AVENUE
Sta 0+150.000 to Sta 0+309.373

BAUGHMAN COMPANY P.A.
ENGINEERING, SURVEYING, & PLANNING
316-262-7271 • 319 ELLIS • WICHITA, KANSAS 67211