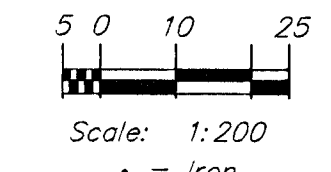


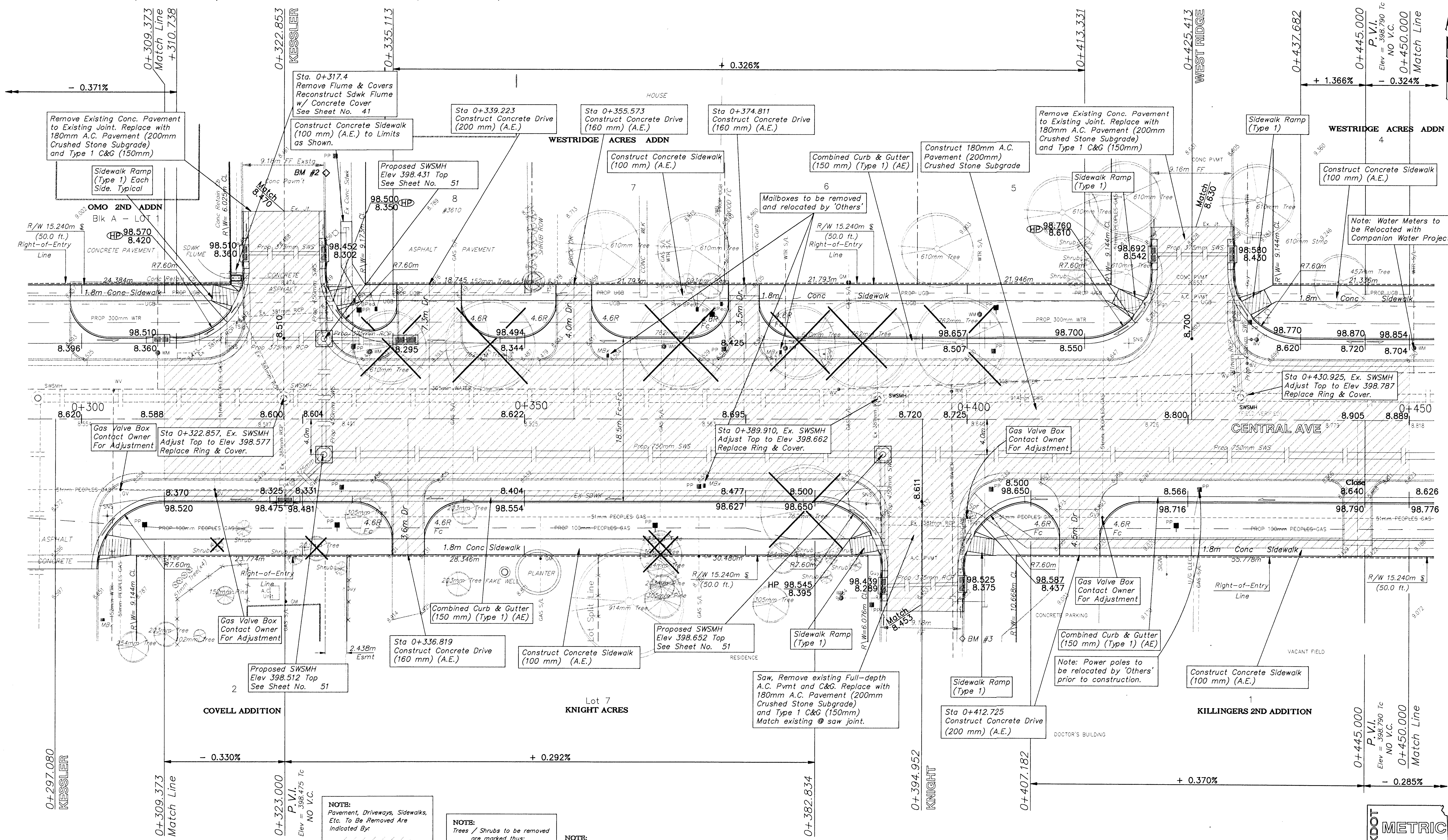
BENCHMARKS

BM #2 - "□" Top of Curb @ 4.72m West and 27.83m North of the Centerline of both Central and Kessler.
Elev. = 398.546 SI Units (1307.55 MSL Datum)

BM #3 - "□" Top of Curb @ 4.72m East and 24.69m South of the Centerline of both Central and Knight.
Elev. = 398.558 SI Units (1307.59 MSL Datum)



FHWA REGION NO.	STATE	PROJECT NO.	FISCAL YEAR	SHEET NO.	TOTAL SHEETS
7	KANSAS	87N-0094-01	1998	10	202



Remove Existing Conc. Pavement to Existing Joint. Replace with 180mm A.C. Pavement (200mm Crushed Stone Subgrade) and Type 1 C&G (150mm)

Sta. 0+317.4
Remove Flume & Covers
Reconstruct Sidewalk Flume w/ Concrete Cover
See Sheet No. 41

Sta 0+339.223
Construct Concrete Drive (200 mm) (A.E.)

Sta 0+355.573
Construct Concrete Drive (160 mm) (A.E.)

Sta 0+374.811
Construct Concrete Drive (160 mm) (A.E.)

Remove Existing Conc. Pavement to Existing Joint. Replace with 180mm A.C. Pavement (200mm Crushed Stone Subgrade) and Type 1 C&G (150mm)

Construct Concrete Sidewalk (100 mm) (A.E.)

Note: Water Meters to be Relocated with Companion Water Project

Sta 0+322.857, Ex. SWSMH
Adjust Top to Elev 398.577
Replace Ring & Cover.

Sta 0+389.910, Ex. SWSMH
Adjust Top to Elev 398.662
Replace Ring & Cover.

Gas Valve Box
Contact Owner
For Adjustment

Sta 0+336.819
Construct Concrete Drive (160 mm) (A.E.)

Proposed SWSMH
Elev 398.652 Top
See Sheet No. 51

Saw, Remove existing Full-depth A.C. Pmnt and C&G. Replace with 180mm A.C. Pavement (200mm Crushed Stone Subgrade) and Type 1 C&G (150mm) Match existing @ saw joint.

Sta 0+412.725
Construct Concrete Drive (200 mm) (A.E.)

NOTE:
Pavement, Driveways, Sidewalks, Etc. To Be Removed Are Indicated By:

NOTE:
Trees / Shrubs to be removed are marked thus:

NOTE:
Water meters, Gas meters, Utility poles, and Electrical junction pedestals, boxes, etc. are to be REMOVED and RELOCATED as necessary by the respective utility company/owner PRIOR TO CONSTRUCTION of this project.

PROJECT NUMBER 472 - 82906				
DESIGN STAFF	DRAWN SONNY	APPROVED JFB	DATE NOV 98	SCALE NOTED

CAPITAL IMPROVEMENT PROJECT
CENTRAL AVENUE
Sta 0+309.373 to Sta 0+450.000

BAUGHMAN COMPANY P. A.
ENGINEERING, SURVEYING, & PLANNING
316-292-7271 • 315 ELLIS • WICHITA, KANSAS 67211

