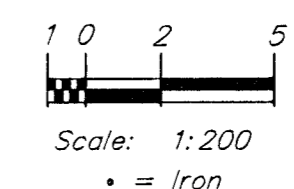
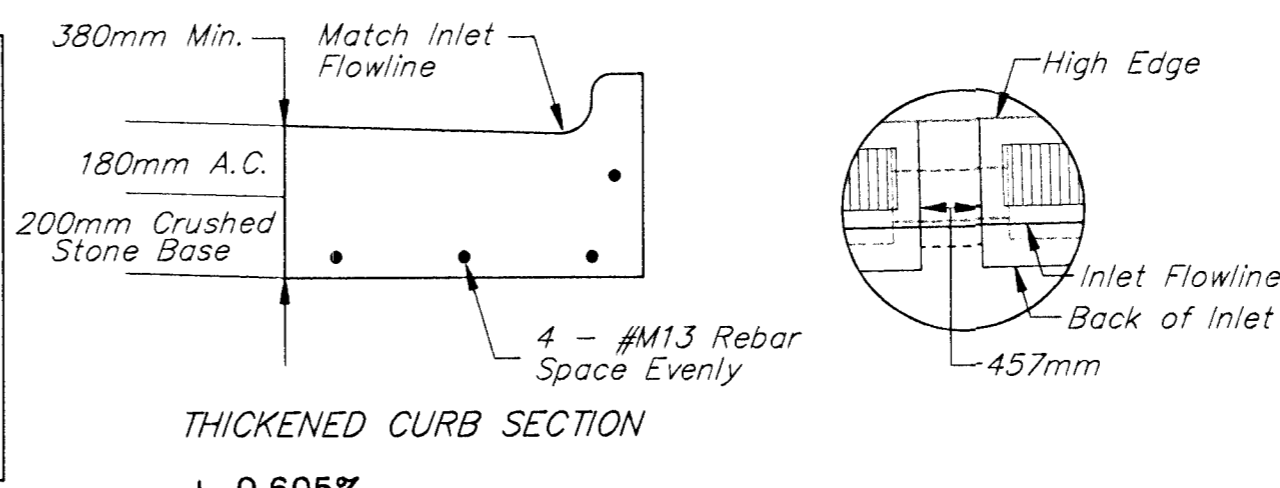


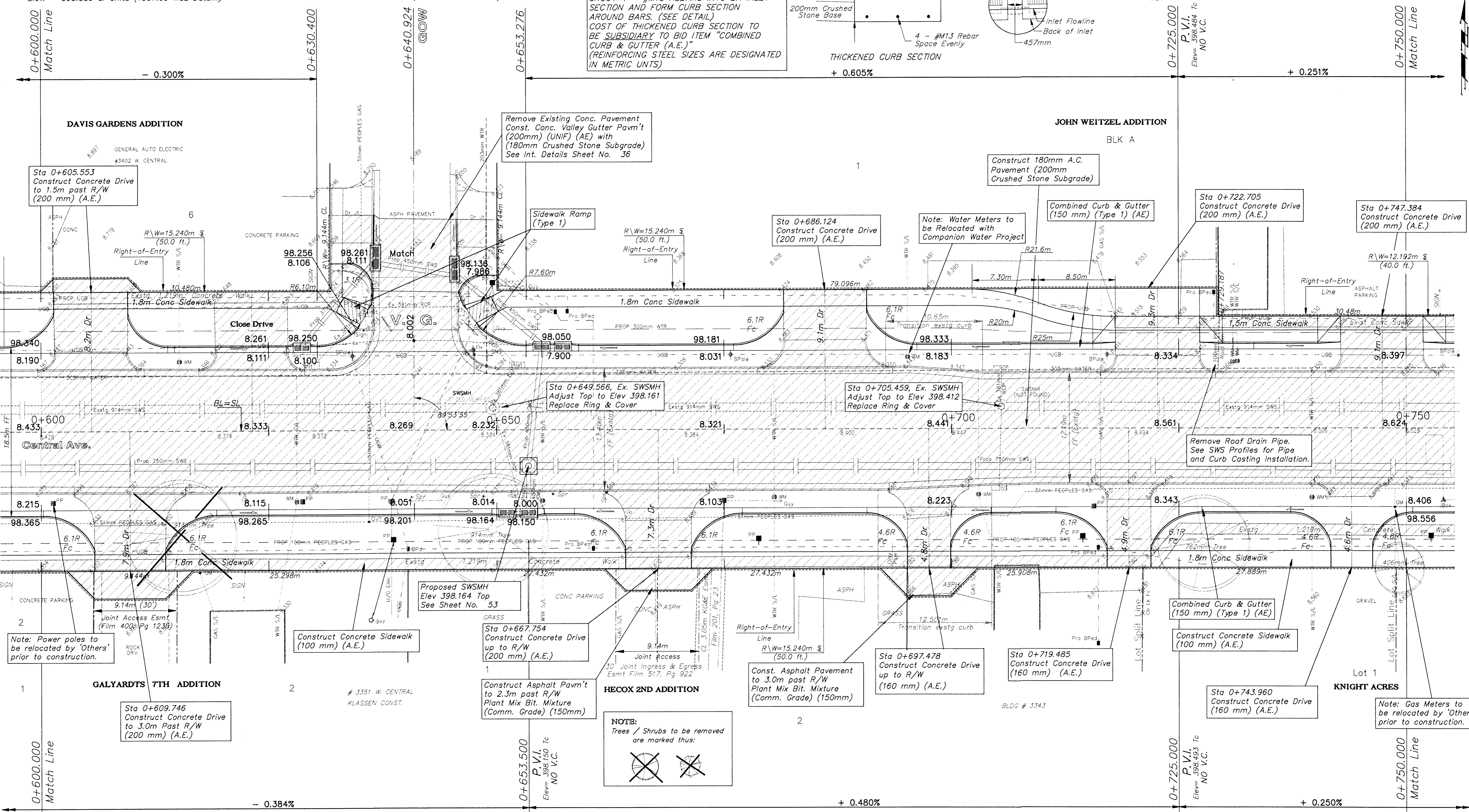
BENCHMARKS

BM #4 - " " Top of Curb @ 15.24m North and 4.72m West of the Centerline of both Joann and Central. Elev. = 398.589 SI Units (1307.69 MSL Datum)
 BM #5 - City Disc Located @ 9.14m South and 12.8m East of the Centerline of both Sheridan and Central. Elev. = 399.024 SI Units (1309.08 MSL Datum)

NOTE
 IF PRECAST INLET TOPS ARE USED CONSTRUCT 457mm LONG THICKENED CURB SECTION BETWEEN INLETS. DRILL & GROUT 4 - #M13 REBARS INTO EA INLET SECTION AND FORM CURB SECTION AROUND BARS. (SEE DETAIL) COST OF THICKENED CURB SECTION TO BE SUBSIDIARY TO BID ITEM "COMBINED CURB & CUTTER (A.E.)" (REINFORCING STEEL SIZES ARE DESIGNATED IN METRIC UNITS)



FHWA REGION NO.	STATE	PROJECT NO.	FISCAL YEAR	SHEET NO.	TOTAL SHEETS
7	KANSAS	87N-0094-01	1998	14	202



Match Line 0+600.000
 - 0.300%
 Match Line 0+750.000
 + 0.251%
 Match Line 0+600.000
 - 0.384%
 Match Line 0+750.000
 + 0.480%
 Match Line 0+750.000
 + 0.250%

NOTE:
 Pavement, Driveways, Sidewalks, Etc. To Be Removed Are Indicated By:

NOTE:
 Water meters, Gas meters, Utility poles, and Electrical junction pedestals, boxes, etc. are to be REMOVED and RELOCATED as necessary by the respective utility company/owner PRIOR TO CONSTRUCTION of this project.

NOTE:
 Trees / Shrubs to be removed are marked thus:

DESIGN STAFF	DRAWN SONNY	APPROVED JFB	DATE NOV 98	SCALE NOTED
--------------	-------------	--------------	-------------	-------------

PROJECT NUMBER 472 - 82908	PROJ. NUMBER 95 05 E026
-------------------------------	----------------------------

CAPITAL IMPROVEMENT PROJECT
CENTRAL AVENUE
 Sta 0+600.000 to Sta 0+750.000

BAUGHMAN COMPANY P.A.
 ENGINEERING, SURVEYING, & PLANNING
 316-282-7271 • 319 ELLIS • WICHITA, KANSAS 67211

CDOT METRIC
 SHEET 14 OF 202