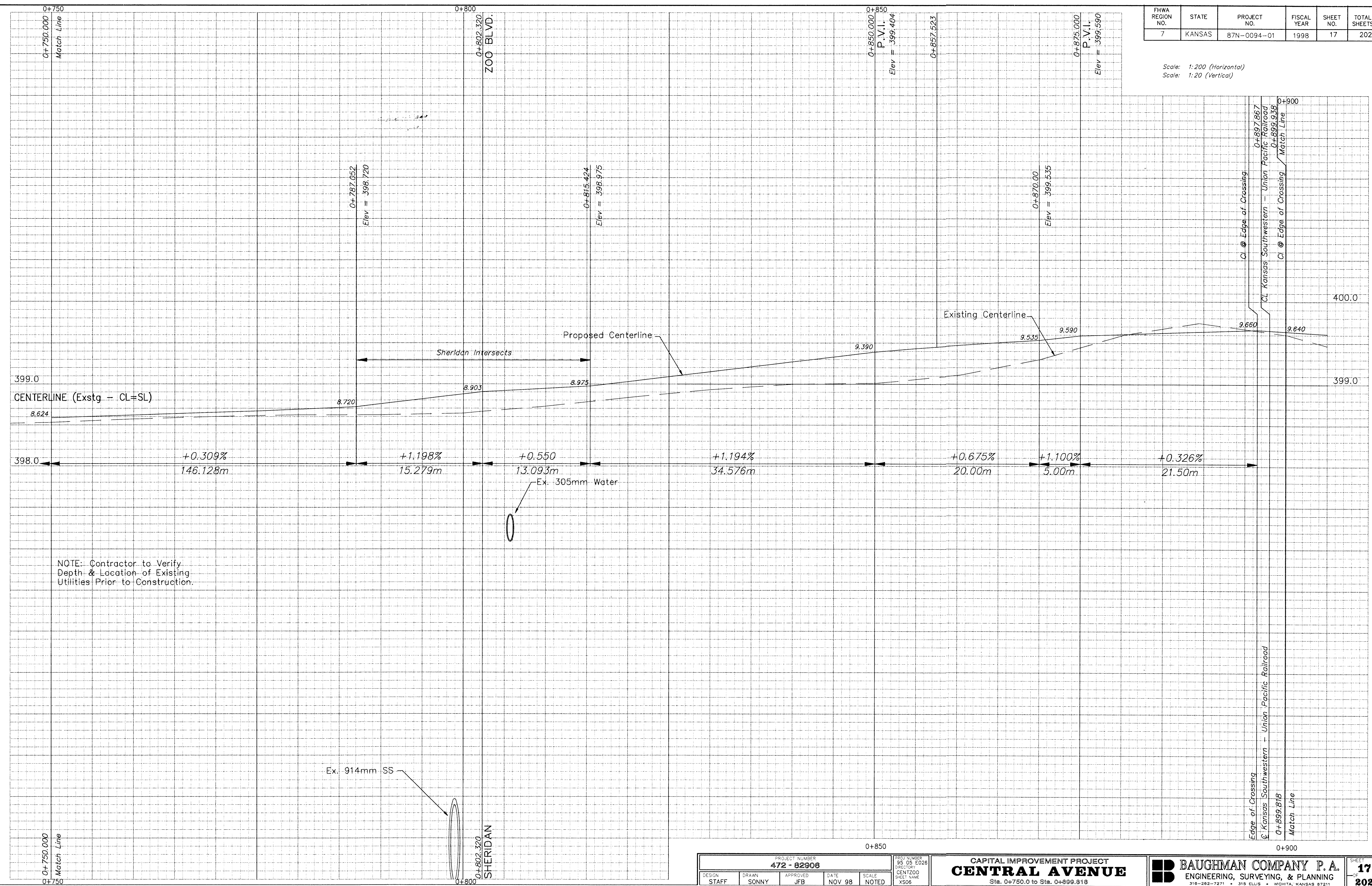


FHWA REGION NO.	STATE	PROJECT NO.	FISCAL YEAR	SHEET NO.	TOTAL SHEETS
7	KANSAS	87N-0094-01	1998	17	202

Scale: 1:200 (Horizontal)  
Scale: 1:20 (Vertical)



399.0  
CENTERLINE (Exstg - CL=SL)

398.0 ← +0.309% 146.128m → +1.198% 15.279m → +0.550 13.093m → +1.194% 34.576m → +0.675% 20.00m → +1.100% 5.00m → +0.326% 21.50m →

NOTE: Contractor to Verify Depth & Location of Existing Utilities Prior to Construction.

Ex. 914mm SS

Ex. 305mm Water

PROJECT NUMBER <b>472 - 82908</b>				
DESIGN STAFF	DRAWN SONNY	APPROVED JFB	DATE NOV 98	SCALE NOTED

PROJ NUMBER 95 05 E026	DIRECTOR CENTZOO	SHEET NAME YS06
---------------------------	---------------------	--------------------

CAPITAL IMPROVEMENT PROJECT  
**CENTRAL AVENUE**  
Sta. 0+750.0 to Sta. 0+899.818

**BAUGHMAN COMPANY P. A.**  
ENGINEERING, SURVEYING, & PLANNING  
318-282-7271 • 318 ELLIS • WICHITA, KANSAS 67211