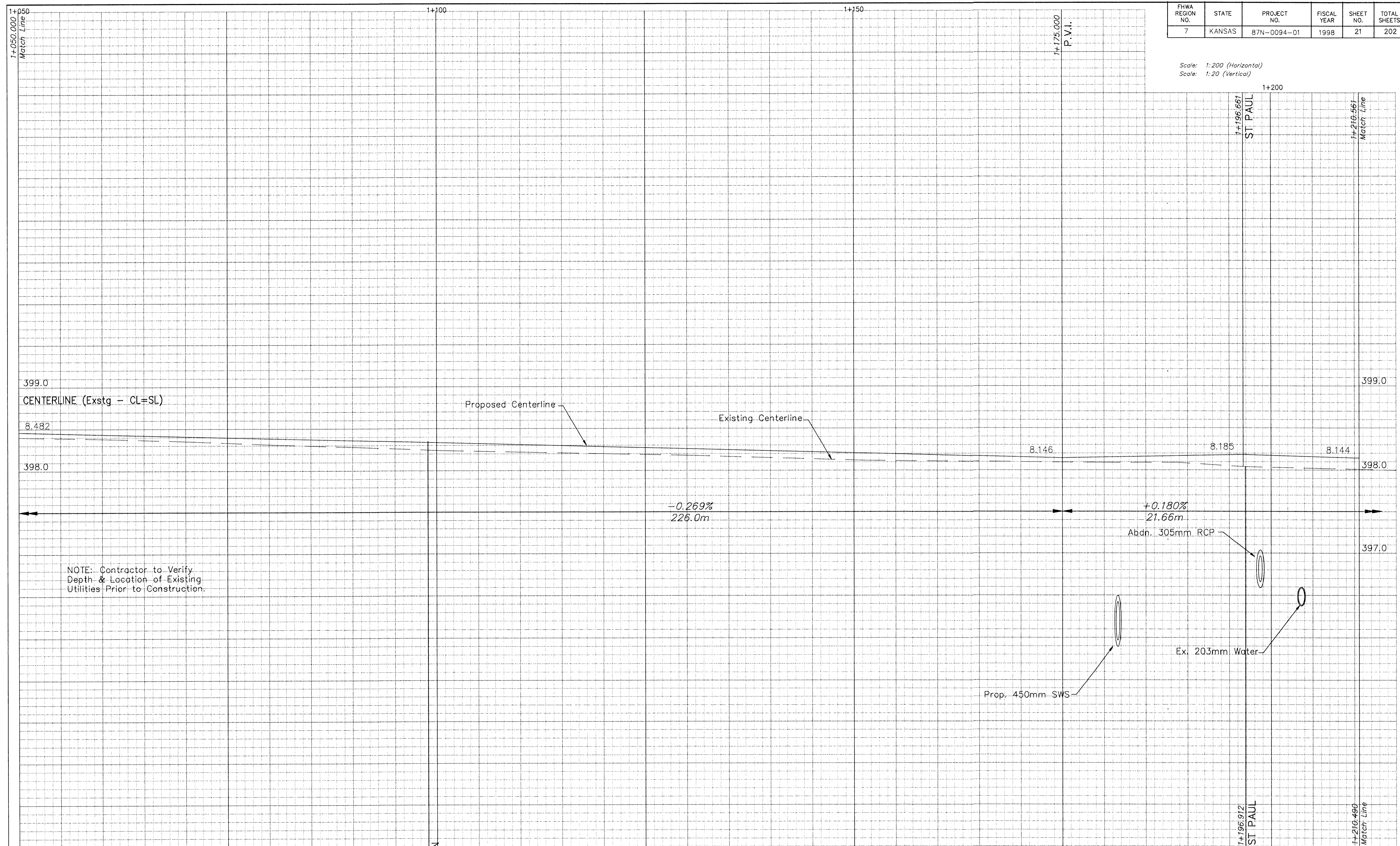


FHWA REGION NO.	STATE	PROJECT NO.	FISCAL YEAR	SHEET NO.	TOTAL SHEETS
7	KANSAS	87N-0094-01	1998	21	202

Scale: 1:200 (Horizontal)
Scale: 1:20 (Vertical)



399.0
CENTERLINE (Exstg - CL=SL)

Proposed Centerline

Existing Centerline

8.482

8.146

8.185

8.144

398.0

398.0

-0.269%
226.0m

+0.180%
21.66m

Abdn. 305mm RCP

397.0

NOTE: Contractor to Verify
Depth & Location of Existing
Utilities Prior to Construction.

Ex. 203mm Water

Prop. 450mm SWS

1+196.661
ST PAUL

1+210.561
Match Line

1+196.912
ST PAUL

1+210.490
Match Line

1+050.000
Match Line

1+096.949
CLAYTON

1+150

1+200

PROJECT NUMBER 472 - 82908			
DESIGN STAFF	DRAWN SONNY	APPROVED JFB	DATE NOV 98
SCALE NOTED			

PROJECT NUMBER
95 05 E026
DIRECTOR
CENTZOO
SHEET NAME
XS08

CAPITAL IMPROVEMENT PROJECT
CENTRAL AVENUE
Sta. 1+050.00 to Sta. 1+210.561

BAUGHMAN COMPANY P.A.
ENGINEERING, SURVEYING, & PLANNING
316-262-7271 • 315 ELLIS • WICHITA, KANSAS 67211

SHEET
OF
21
OF
202