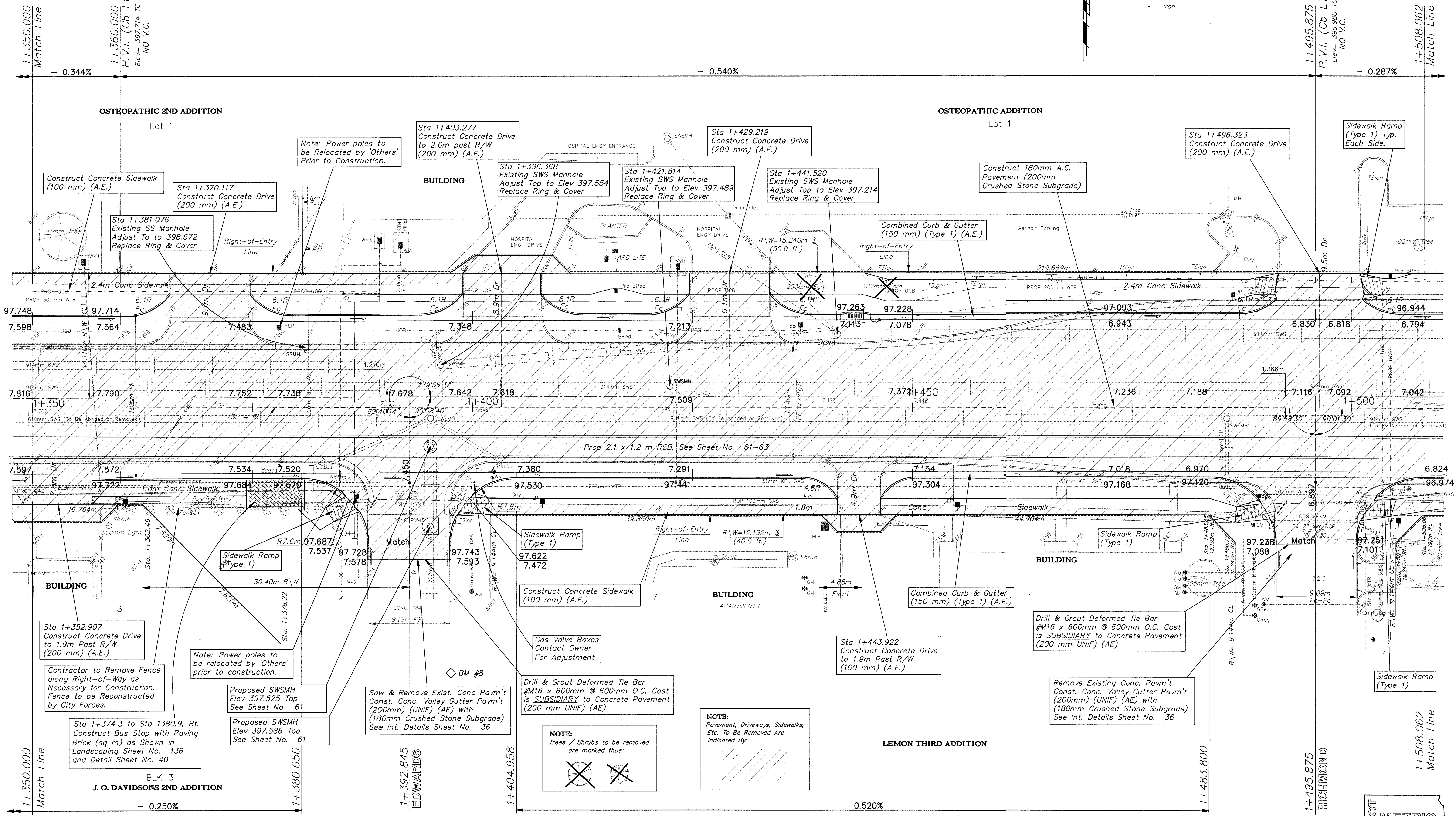
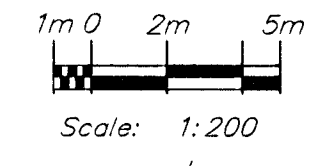


BENCHMARKS

BM #8 - "□" Top of Curb @ 31.39m South and 4.72m East of the Centerline of both Edwards and Central.
Elev. = 397.997 SI Units (1305.75 MSL Datum)

FHWA REGION NO.	STATE	PROJECT NO.	FISCAL YEAR	SHEET NO.	TOTAL SHEETS
7	KANSAS	87N-0094-01	1998	24	202



NOTE:
Trees / Shrubs to be removed are marked thus:

NOTE:
Pavement, Driveways, Sidewalks, Etc. To Be Removed Are Indicated By:

NOTE:
Water meters, Gas meters, Utility poles, and Electrical junction pedestals, boxes, etc. are to be REMOVED and RELOCATED as necessary by the respective utility company/owner PRIOR TO CONSTRUCTION of this project.

DESIGN	DRAWN	APPROVED	DATE	SCALE
JFB	STAFF	JFB	NOV 98	NOTED

PROJECT NUMBER
472 - 82908

PRON NUMBER
95 05 E028
DIRECTOR
CENTZOO
SHEET NAME
PAV10

CAPITAL IMPROVEMENT PROJECT
CENTRAL AVENUE
Sta 1+350.000 to Sta 1+508.062

BAUGHMAN COMPANY P. A.
ENGINEERING, SURVEYING, & PLANNING
316-262-7271 • 315 ELLIS • WICHITA, KANSAS 67211

SHEET
OF
24
202