

GENERAL NOTES:

1. Contractor will be required to provide notice to utility companies a minimum of forty-eight (48) hours prior to any excavation, as follows:

Kansas One-Call	687-2470
The Contractor must notify the following in case of an emergency:	
Cox Communications	262-4270
Kansas Gas Service	1-888-482-4950
Westar Energy	383-8650
Aquila Energy	1-800-303-0357
AT&T	268-2245
City of Wichita Water Dept.	268-4563
City of Wichita Sewer Maint.	268-4024
City of Wichita Storm Sewer Maint.	268-4090
City of Wichita Traffic Maint.	268-4034
Conoco Phillips Pipeline Co.	1-877-267-2290
Southern Star Pipeline Co.	529-6600
Kinder-Morgan Pipeline Co.	1-888-844-5658

2. Utility service lines, poles, valve boxes, meters, and etcetera are to be adjusted as necessary by others prior to construction unless the plans specifically call for their adjustment by the Contractor or unless the plans specifically identify a utility to be adjusted by its owner during construction. Existing utilities and their location, as shown on the plans, represent the best information obtainable for design. The Contractor will be required to work around existing utilities within the right-of-way which do not conflict with proposed construction.

3. Rubble from the removal of miscellaneous structures and excess excavation which is to be wasted shall be disposed of on sites to be provided by the Contractor. These sites shall be approved by the Engineer as to suitability, appearance and site location. Locations, in the opinion of the Engineer, that will leave an unsightly appearance will not be approved. All disposal sites must be approved by the Kansas Department of Health and Environment. Material either stockpiled or disposed of in a flood plain would require a Kansas State Board of Agriculture permit. Any material dumped in waters of the United States or wetlands is subject to U.S. Corps. of Engineers permitting regulations. Any material buried or stockpiled beyond approved construction limits would require additional archaeological investigations unless buried in a previously approved borrow location.

4. Trees and shrubs in public right-of-way which are in direct conflict with proposed new construction shall be removed by the Contractor with the Engineer's approval. Trees and shrubs which are not in direct conflict with proposed new construction shall be saved and protected from damage.

5. The Contractor shall give all property owners and/or tenants of developed property abutting the construction of this project a minimum of ten (10) days notice prior to start of construction.

6. The Contractor shall be responsible for preserving property irons. The Contractor will be required to re-establish any property irons which are damaged or destroyed by his construction operations. Such irons shall be re-established by a licensed land surveyor in accordance with state laws.

7. All existing and proposed erosion control measures including silt fencing, erosion control mat, straw bales, inlet barriers, and const. entrance shall be maintained throughout construction by the contractor and until project is accepted by the City of Wichita. The on-site engineer shall complete weekly reports on the status of erosion control measures. The contractor shall be required to comply with maintenance and/or replacement of erosion control measures as determined by the on-site engineer until project is accepted by City of Wichita. Maintenance and/or replacement of erosion control measures to be paid by L.S. bid item "Maintain Existing BMP's."

8. See Note on Sheet 7 for excess excavation.

9. All areas within Res. "C" and Res. "D" above the water surface disturbed by construction shall be seeded, mulched (where erosion control blanket is not specified), and fertilized with native seed mix as follows:

Native Seed Mixture:	
PLS Rate: lbs./ac.	Item:
80	Fertilizer (16-20-0)
2	Big Bluestem Grass Seed (Kaw)
10	Canada Wildrye Grass Seed
2	Indiangrass Seed (Osage)
2	Little Bluestem Grass Seed (Aldous)
6.3	Side Oats Grama Grass Seed (El Reno)
10	Sterile Wheatgrass (Regreen/Quick Guard)
1	Switchgrass Seed (Blackwell)
0.5	Tall Dropseed
4	Western Wheatgrass Seed (Barton)
5	Annual Rye
2 tons/acre	Prairie Hay/Bromegrass Hay mulch

All other disturbed areas are to be seeded as follows: (Temporary Seeding)
SEED --- Rye grass (PLS)---5#/1000 Sq. Ft.

All costs associated with seeding including perpetration of ground, seeding, fertilizing, mulching, shall be including in the L.S. bid item "Seeding"

10. The Developer for this project is Jay Russell
PO Box 75337, Wichita, KS 67272
(316) 722-2417 jay.russell@russellco.com

Storm Water Certification:

These construction plans were prepared in accordance with the current Storm Water Management Regulations as set forth in the City of Wichita's Storm Water Management Ordinance 16.32 and the policies/guidelines presented in the Wichita/Sedgwick County Storm Water Manual.

Disturbed Area = 30.2 ac.
Water Quality Treatment: Provided by pond.
Downstream Channel Protection: Provided by pond.

SHEET INDEX

Title Sheet	1
Line 1	2
Line 2	3-4
Line 3	5
Line 4 & Line 5	6
Mass Grading Plan	7
Pond Plan	8-9
Erosion Control BMP Details	10-14
Mass Grading Typical Section	15
Std. Type 1A Inlet Detail	16
Backyard Inlet Detail	17
Frame & Cover Detail	18
Coordinate Sheet	19-20
Copy of Plat	21

EARTH WORK TOTALS (Unadjusted)

(for information only)

	C.Y. Cut	C.Y. Fill
Mass Grading	23,807	40,243
North Pond	9,830	103
South Pond	18,969	41
Res. "D" Pond	1,640	84
Total Earthwork	54,246	40,471

Earthwork quantities are for reference only. All cost associated with earthwork shall be included in C.Y. "Excavation" & L.S. "Grading, Mass".

STORMWATER DRAIN #433

to serve

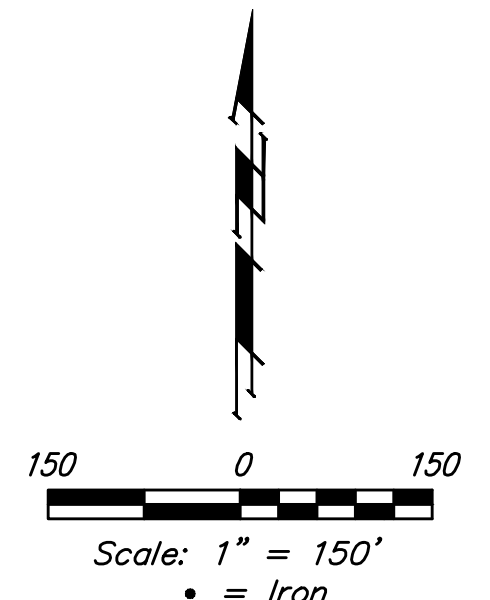
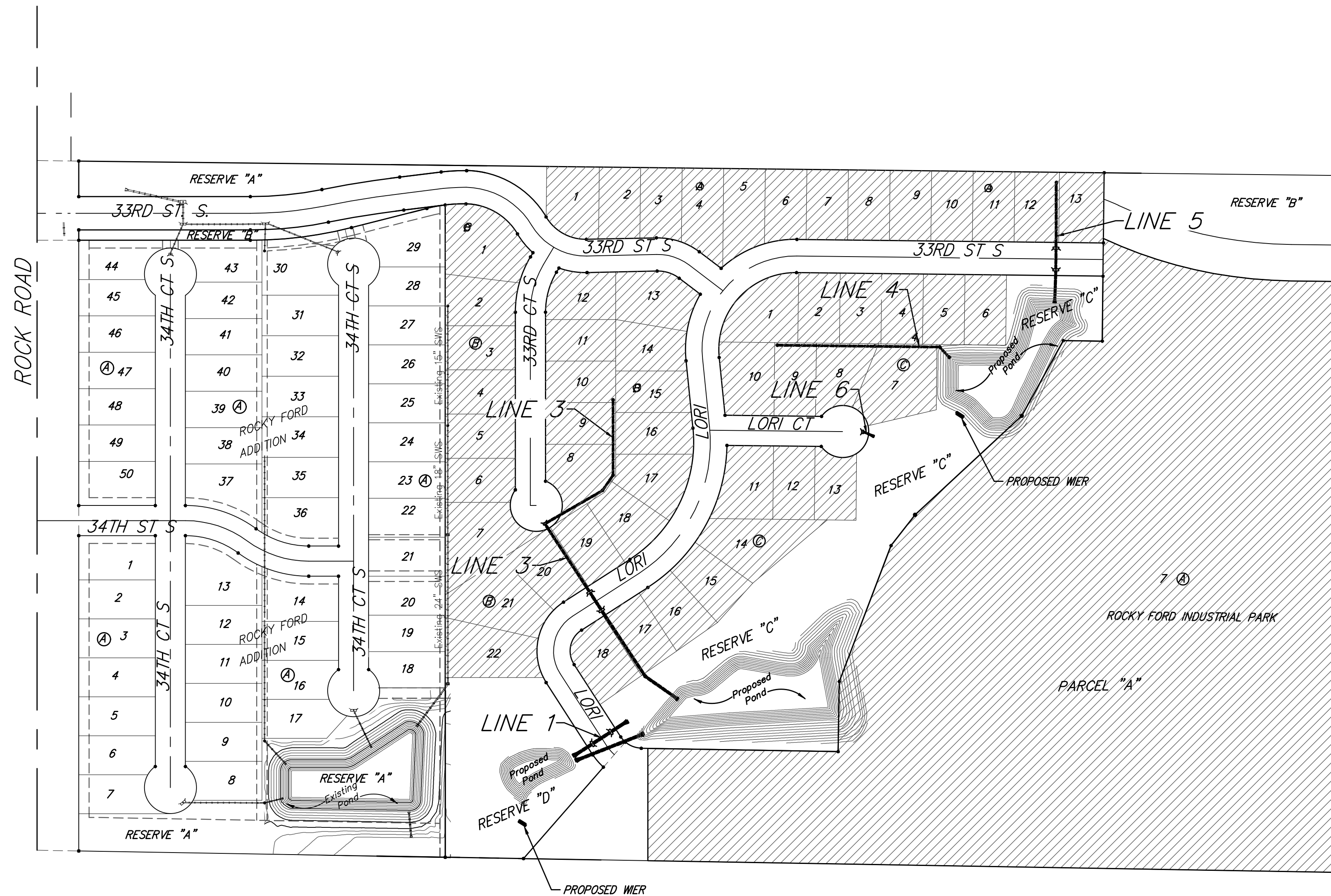
ROCKY FORD 2ND ADDITION

CITY OF WICHITA, KANSAS

Gary Janzen, P.E. City Engineer

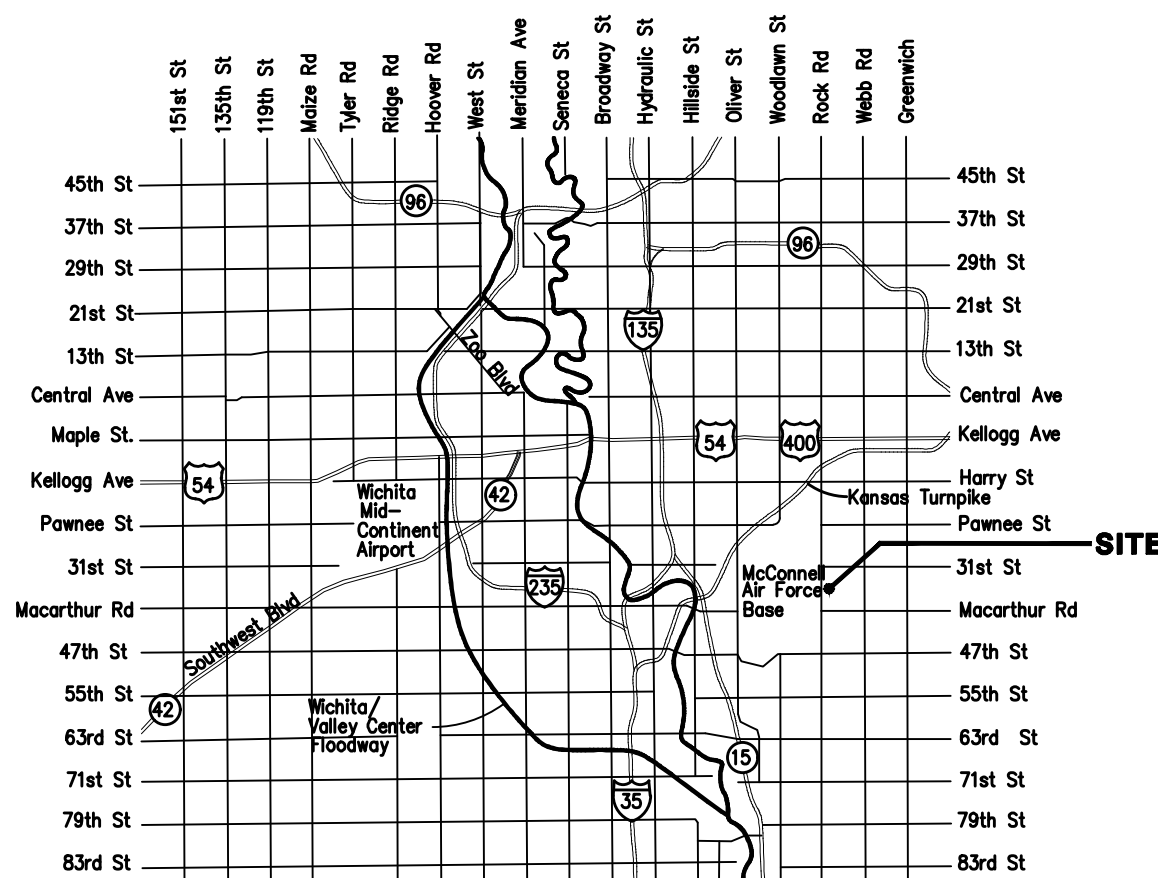
Project Number: 468-85285

OCA Number: 751577



BENCHMARKS

City of Wichita Benchmark Disk at South End of Hubguard on the SW Cor. of R.C.B.C., West Side of Rock Road, 706' North-northwest of the Northwest Corner of Lot 44, Block A, Rocky Ford Addition. Elev. = 1368.14 NAVD88



Vicinity Map

Benefit District:



Baughman Company, P.A. 315 Ellis St. Wichita, KS 67211 P 316-262-7271 F 316-262-0149
ENGINEERING | SURVEYING | PLANNING | LANDSCAPE ARCHITECTURE

