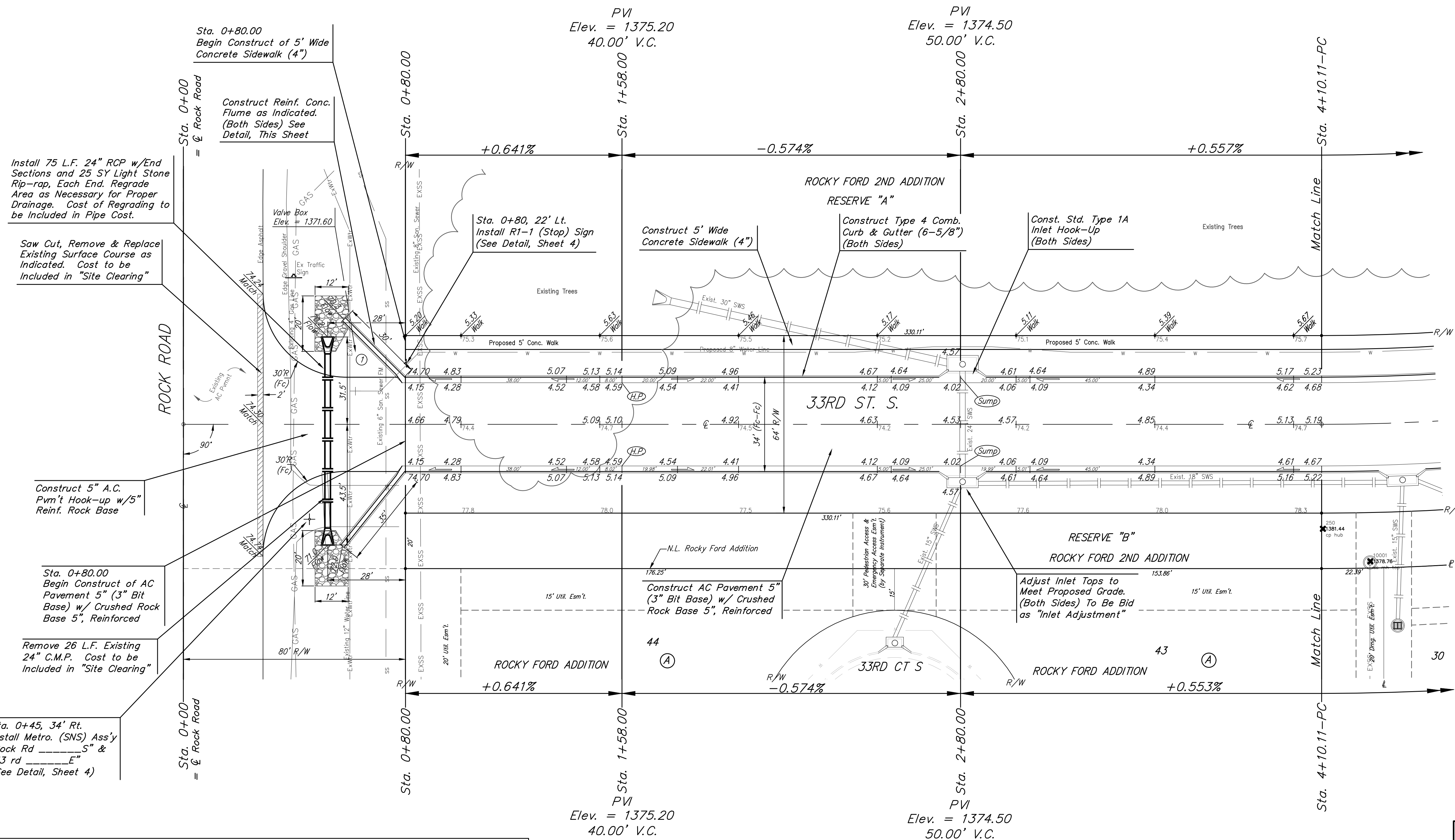
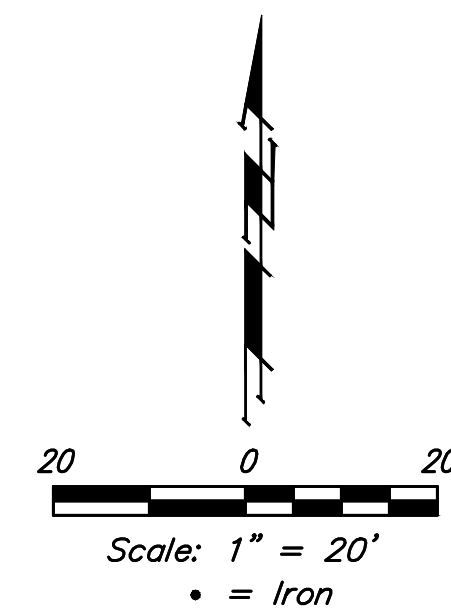


BENCHMARK:
 City of Wichita Benchmark Disk
 at South End of Hubguard on the
 SW Cor. of R.C.B.C., West Side of
 Rock Road, 706' North-northwest
 of the Northwest Corner of Lot
 44, Block A, Rocky Ford Addition.
 Elev. = 1368.14 NAVD88



Install 75 L.F. 24" RCP w/End Sections and 25 SY Light Stone Rip-rap, Each End. Regrade Area as Necessary for Proper Drainage. Cost of Regrading to be Included in Pipe Cost.

Saw Cut, Remove & Replace Existing Surface Course as Indicated. Cost to be Included in "Site Clearing"

Construct 5" A.C. Pvm't Hook-up w/5" Reinf. Rock Base

Sta. 0+80.00 Begin Construct of AC Pavement 5" (3" Bit Base) w/ Crushed Rock Base 5", Reinforced

Remove 26 L.F. Existing 24" C.M.P. Cost to be Included in "Site Clearing"

Sta. 0+45, 34' Rt. Install Metro. (SNS) Ass'y "Rock Rd _____S" & "33 rd _____E" (See Detail, Sheet 4)

Sta. 0+80.00 Begin Construct of 5' Wide Concrete Sidewalk (4")

Construct Reinf. Conc. Flume as Indicated. (Both Sides) See Detail, This Sheet

Sta. 0+80, 22' Lt. Install R1-1 (Stop) Sign (See Detail, Sheet 4)

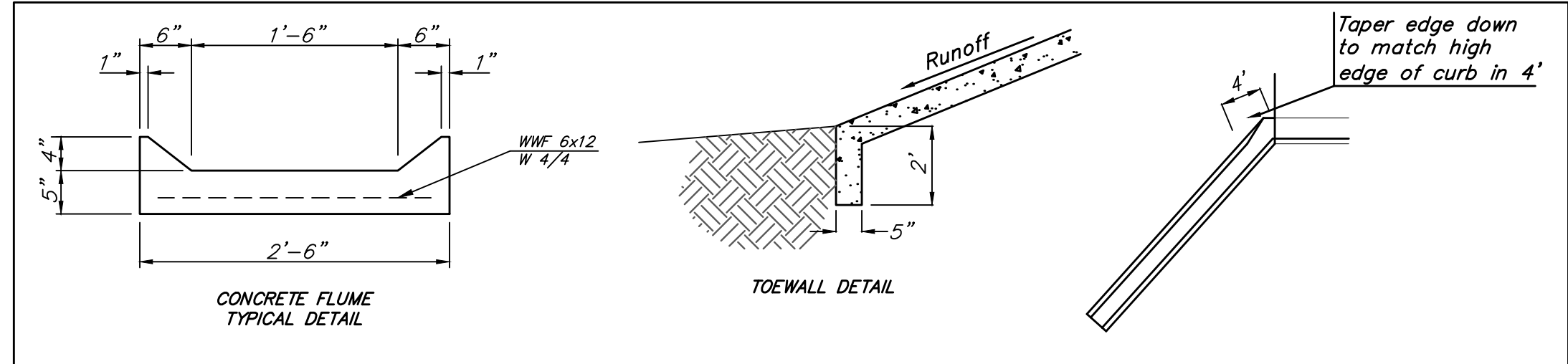
Construct 5' Wide Concrete Sidewalk (4")

Construct Type 4 Comb. Curb & Gutter (6-5/8") (Both Sides)

Const. Std. Type 1A Inlet Hook-Up (Both Sides)

Construct AC Pavement 5" (3" Bit Base) w/ Crushed Rock Base 5", Reinforced

Adjust Inlet Tops to Meet Proposed Grade. (Both Sides) To Be Bid as "Inlet Adjustment"



VALVE LOCATION TABLE

Valve Number	Baseline Station	Offset Distance	Offset Direction
1	0+62.00	26'	Lt
2	7+84.56	26'	Lt



Baughman Rocky Ford 2nd Addition
33RD ST SOUTH
 Street Improvements

Baughman Company, P.A. 315 Ellis St. Wichita, KS 67211 P 316-262-7271 F 316-262-0149
 ENGINEERING | SURVEYING | PLANNING | LANDSCAPE ARCHITECTURE

PROJECT NUMBER 472-65384	DESIGN DMV	DRAWN JAK
REVISIONS:	APPROVED	DATE 2/15/16
	SCALE Noted	SHEET 5 OF 16

E:\Projects\Rocky Ford 2nd Addition\Engineering\33rd St Paving_1712E895\STR PLANS.dwg