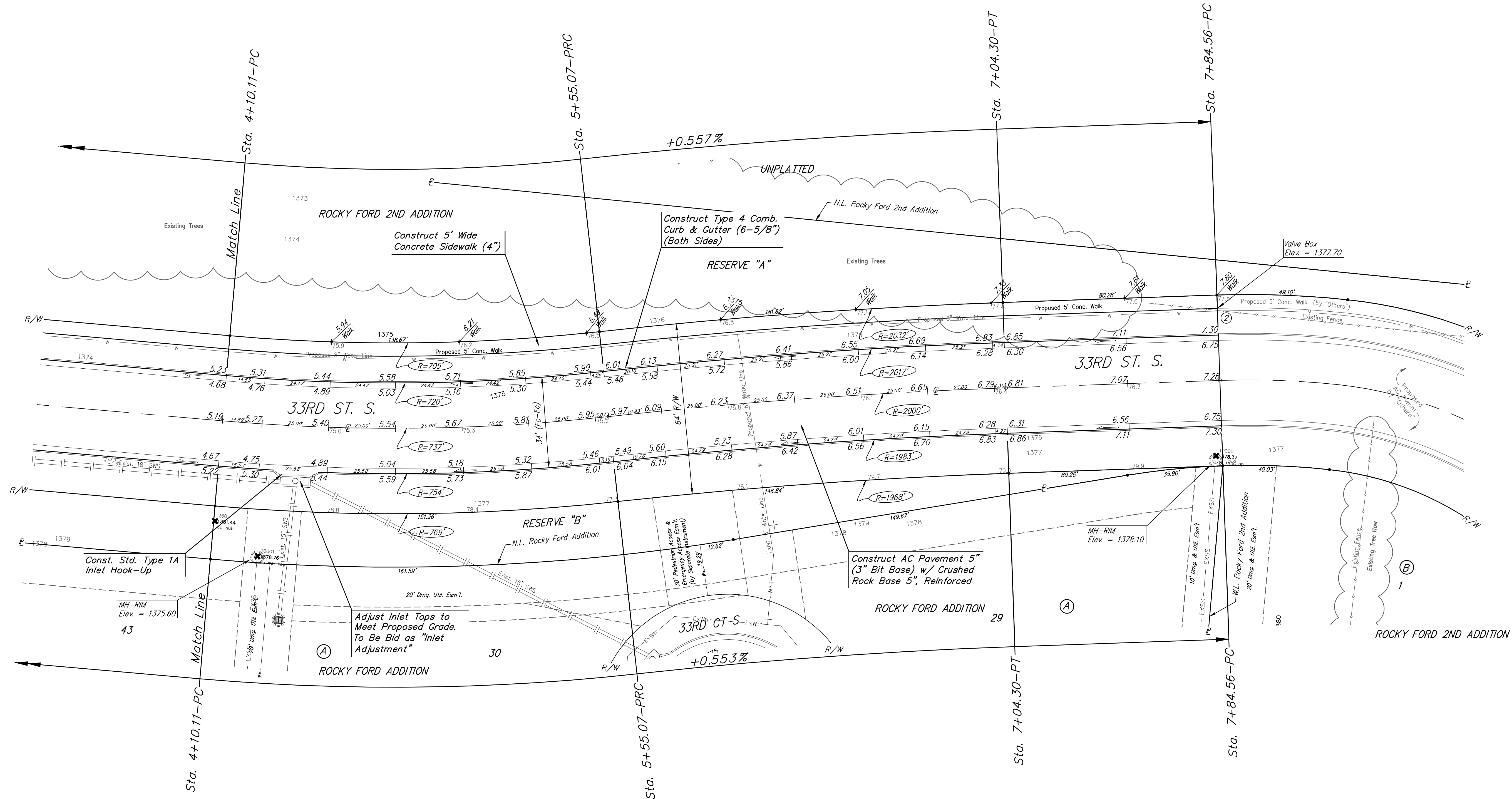
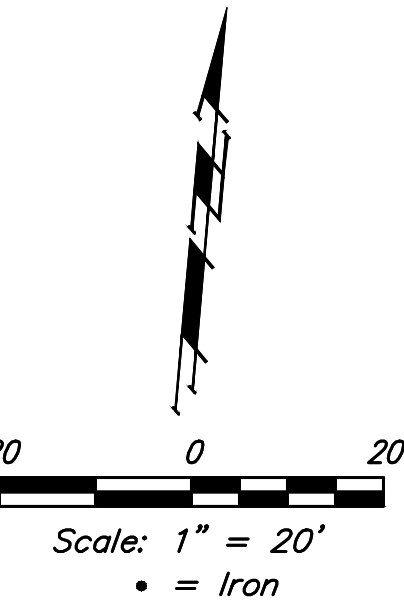


BENCHMARK:
 City of Wichita Benchmark Disk
 at South End of Hubguard on the
 SW Cor. of R.C.B.C., West Side of
 Rock Road, 706' North-northwest
 of the Northwest Corner of Lot
 44, Block A, Rocky Ford Addition.
 Elev. = 1368.14 NAVD88



Curve #1
 Curve Data Based on Centerline
 Rad. = 737' Delta = 117°10' Tangent = 72.71'
 Arc = 144.96' L.C. = 144.73' Def./Ft. = 2.33225 Min.

Station	Arc	Face Chord Length		Defl.	Total Defl.
		B' Left	B' Right		
4+10.11	-	-	-	0'00"00"	0'00"00"
4+25.00	14.89'	14.38'	15.39'	0'34"44"	0'34"44"
4+50.00	25.00'	24.15'	25.85'	0'58"18"	1'33"02"
4+75.00	25.00'	24.15'	25.85'	0'58"18"	2'31"20"
5+00.00	25.00'	24.15'	25.85'	0'58"19"	3'29"39"
5+25.00	25.00'	24.15'	25.85'	0'58"18"	4'27"57"
5+50.00	25.00'	24.15'	25.85'	0'58"19"	5'26"16"
5+55.07	5.07'	4.90'	5.24'	0'11"49"	5'38"05"

Curve #2
 Curve Data Based on Centerline
 Rad. = 2000' Delta = 47°30' Tangent = 74.65'
 Arc = 149.23' L.C. = 149.19' Def./Ft. = 0.85941 Min.

Station	Arc	Face Chord Length		Defl.	Total Defl.
		B' Left	B' Right		
5+55.07	-	-	-	0'00"00"	0'00"00"
5+75.00	19.93'	20.18'	19.68'	0'17"08"	0'17"08"
6+00.00	25.00'	25.31'	24.69'	0'21"29"	0'38"37"
6+25.00	25.00'	25.31'	24.69'	0'21"29"	1'00"06"
6+50.00	25.00'	25.31'	24.69'	0'21"29"	1'21"35"
6+75.00	25.00'	25.31'	24.69'	0'21"29"	1'43"04"
7+00.00	25.00'	25.31'	24.69'	0'21"29"	2'04"33"
7+04.30	4.30'	4.35'	4.25'	0'03"42"	2'08"15"



Baughman		Rocky Ford 2nd Addition 33RD ST SOUTH Street Improvements	
Baughman Company, P.A. 315 Ellis St. Wichita, KS 67211 P 316.262.7271 F 316.262.0149 ENGINEERING SURVEYING PLANNING LANDSCAPE ARCHITECTURE			
PROJECT NUMBER 472-85384	DESIGN DMV	DRAWN JAK	DATE 2/15/16
REVISIONS:	APPROVED	SCALE Noted	
		SHEET 6 OF 16	

E:\Projects\Rocky Ford 2nd Addition_Engineering\33rd St Paving_17-12-8995\STR PLANS.dwg