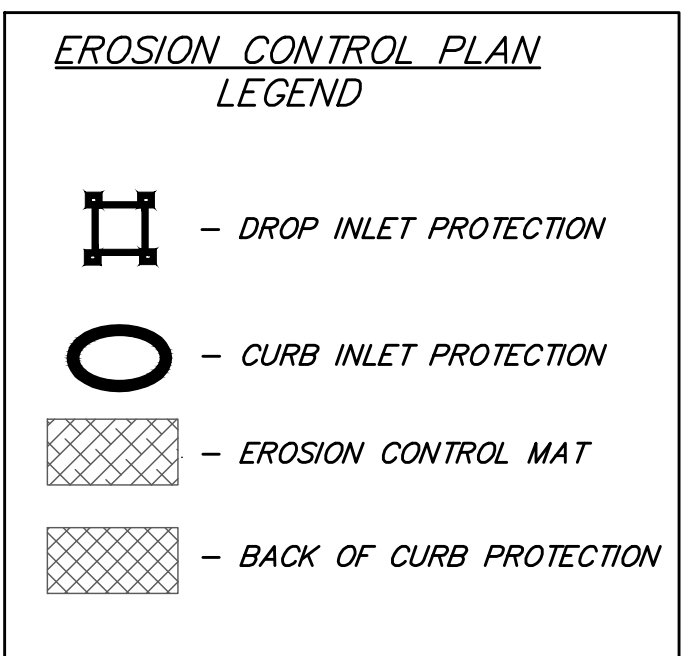
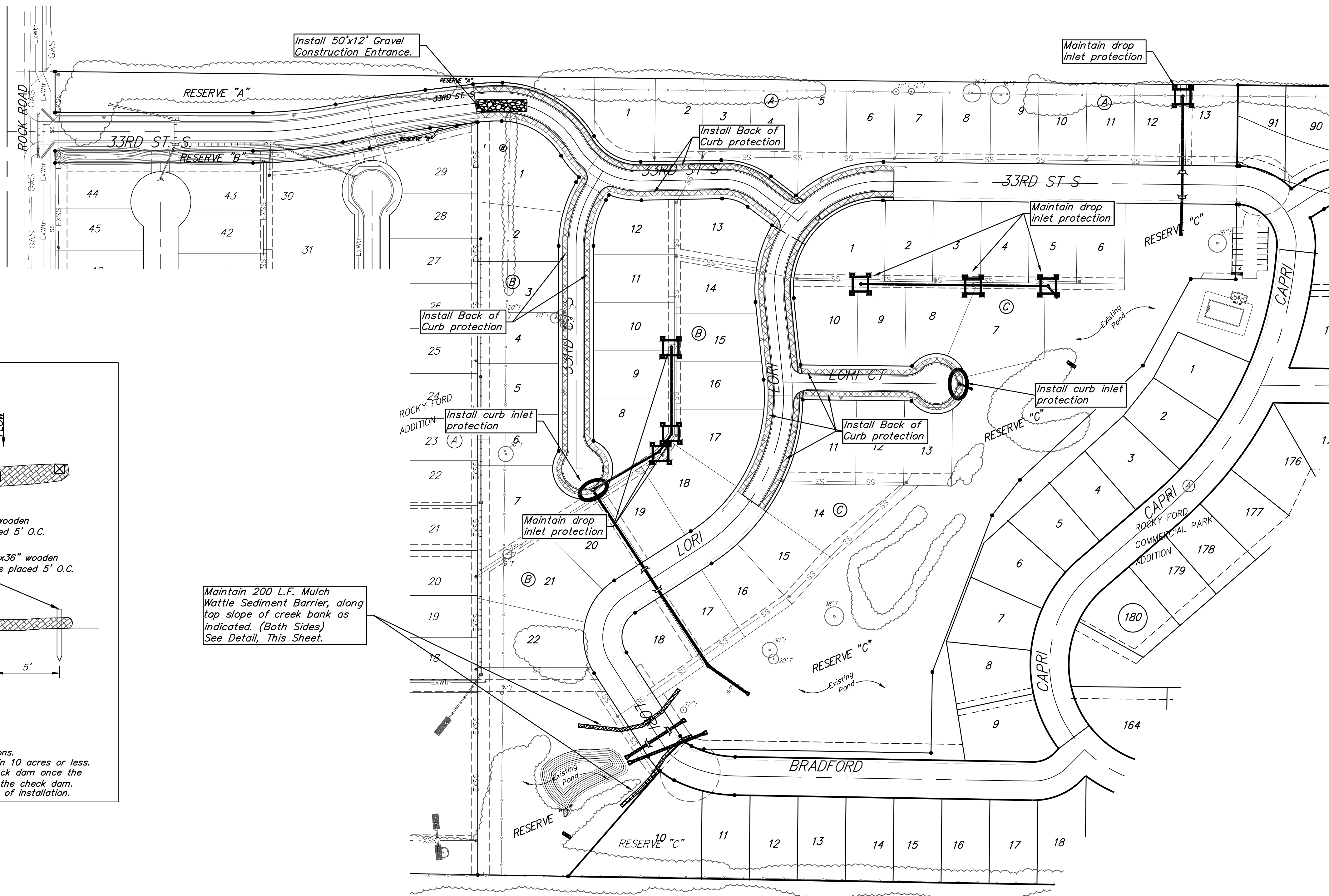
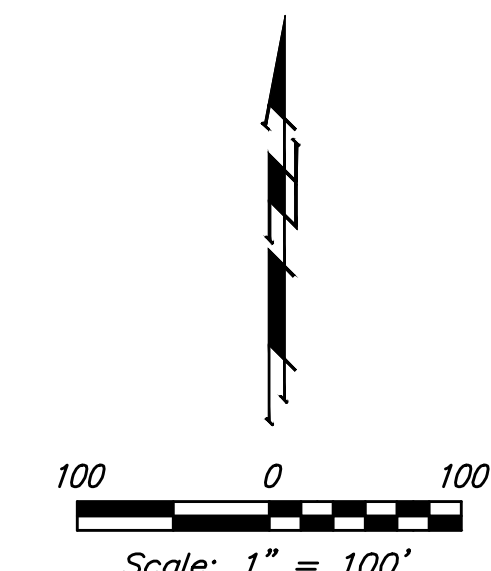
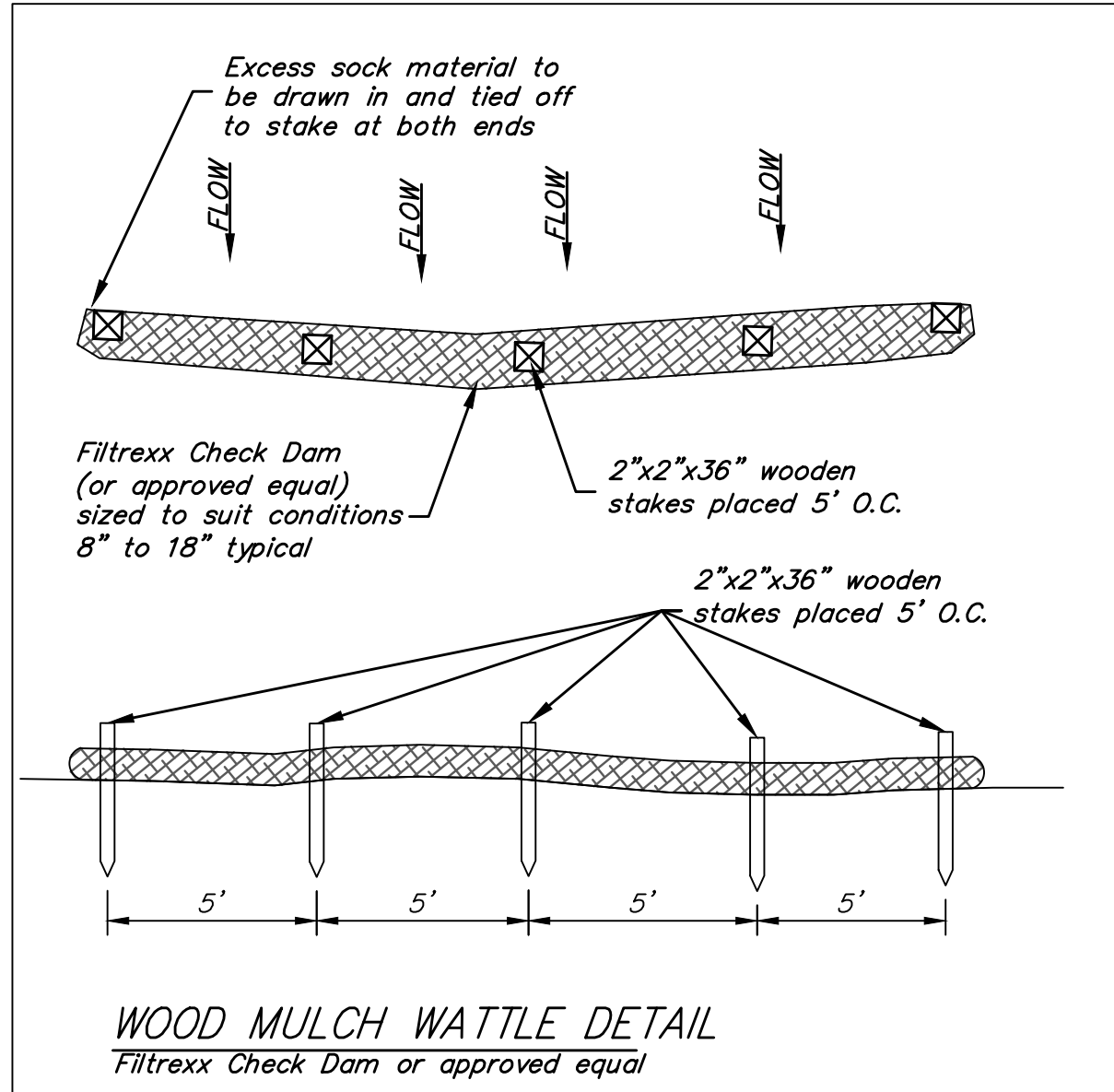


BENCHMARK:
 City of Wichita Benchmark Disk at
 South End of Hubguard on the SW
 Cor. of R.C.B.C., West Side of Rock
 Road, 706' North-northwest of the
 Northwest Corner of Lot 44, Block
 A, Rocky Ford Addition.
 Elev. = 1368.14 NAVD88



- NOTES:**
- Contractor shall make sure all erosion control is in place before project is accepted. This plan represents the minimum standard. Any additional erosion control measures shall be installed by the Contractor as needed.
 - Removal of Gravel Construction Entrance for pavement construction shall be included in bid item "Site Clearing".
 - This Plan is Not To Be Used As A Comprehensive Grading Plan. All Spot Elevations Are Proposed & Subject To Change.
 - All areas disturbed during construction shall be seeded, mulched, and fertilized as per Cover Sheet General Notes.



- NOTES:**
- All material to meet manufacturer specifications.
 - Check dam should be used in areas that drain 10 acres or less.
 - Sediment should be removed from behind check dam once the accumulated height has reached 1/2 height of the check dam.
 - Check dam can be direct seeded at the time of installation.

EROSION CONTROL MEASURE	INSTALL	MAINTAIN
BACK OF CURB PROTECTION (LF)	4,090	0
CONSTRUCTION ENTRANCE (EA)	1	0
CURB INLET BARRIER (EA)	2	0
DITCH CHECK (EA)	0	0
DROP INLET PROTECTION (EA)	0	6
MULCH WATTLE (LF)	0	200
EROSION CONTROL MAT (SY)	0	0
MAINTAIN EROSION CONTROL BMP's (LS)	0	1

* ALL EXISTING BMPs INCLUDING CONSTRUCTION ENTRANCE, SEDIMENT BARRIERS, SILT FENCE, CUT-OFF TRENCH, AND EROSION CONTROL MAT SHALL BE MAINTAINED AND REPAIRED IF NECESSARY.

Baughman Rocky Ford 2nd Addition - Phase I
EROSION CONTROL
 Street Improvements

Baughman Company, P.A. 315 Ellis St. Wichita, KS 67211 P 316-262-7271 F 316-262-0149
 ENGINEERING | SURVEYING | PLANNING | LANDSCAPE ARCHITECTURE

PROJECT NUMBER 472-85430	DESIGN DMV	DRAWN JAK
REVISIONS:	APPROVED	DATE 2/18
	SCALE Noted	SHEET 14 OF 27

Professional Engineer Seal: License # 15178, State of Kansas, A-30-18