

BENCHMARK:
 City of Wichita Benchmark Disk at
 South End of Hubguard on the SW
 Cor. of R.C.B.C., West Side of Rock
 Road, 706' North-northwest of the
 Northwest Corner of Lot 44, Block
 A, Rocky Ford Addition.
 Elev. = 1368.14 NAVD88

Curve #1
 Curve Data Based on Centerline
 Rad. = 314.5' Delta = 8'07'09" Tangent = 22.32'
 Arc = 44.57' L.C. = 44.53' Def./Ft. = 5.46500 Min.

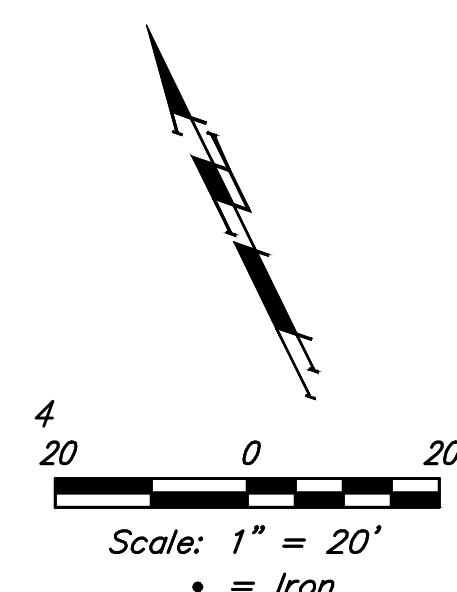
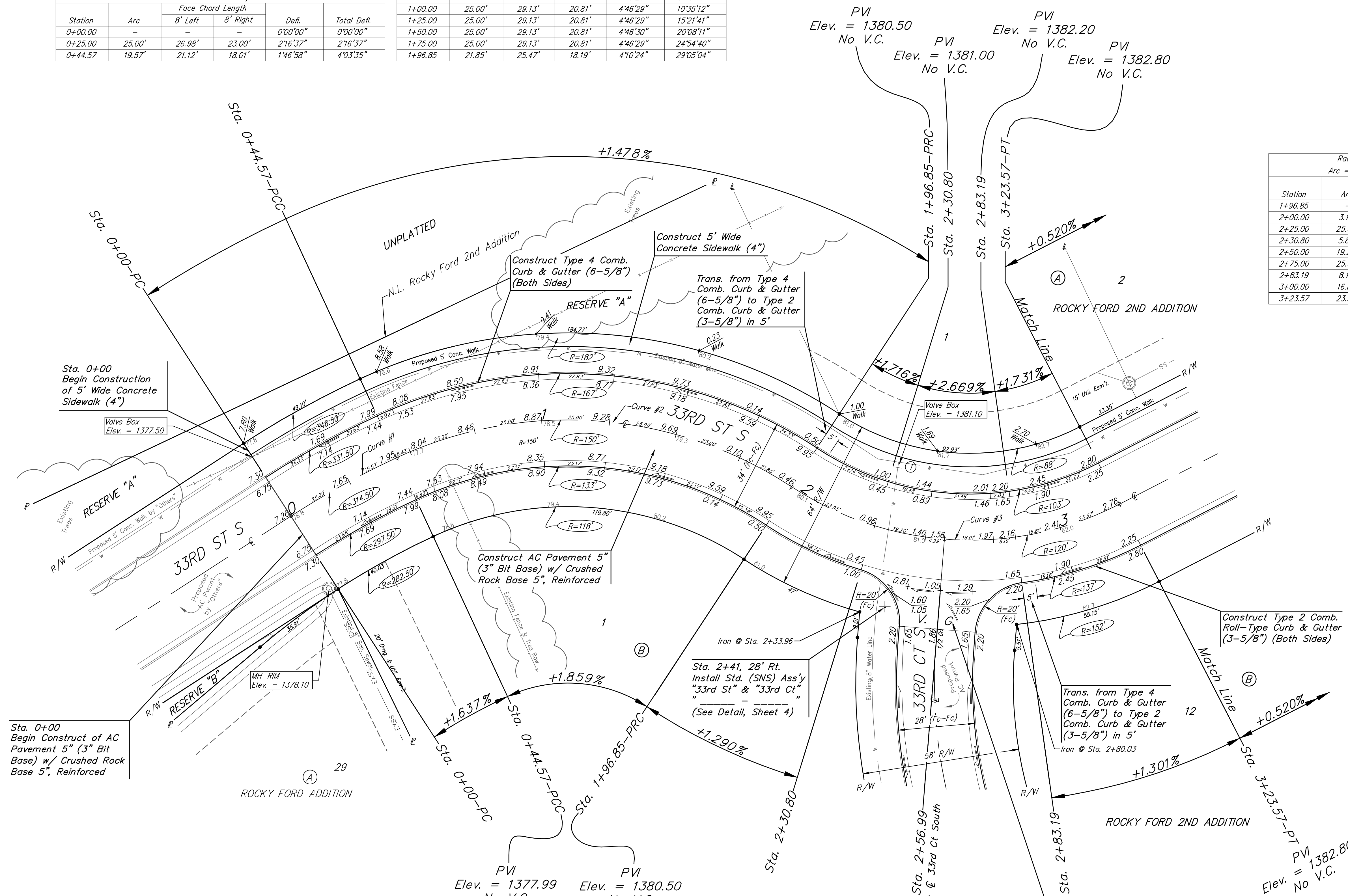
Station	Arc	Face Chord Length		Defl.	Total Defl.
		8' Left	8' Right		
0+00.00	-	-	-	0'00'00"	0'00'00"
0+25.00	25.00'	26.98'	23.00'	2'16'37"	2'16'37"
0+44.57	19.57'	21.12'	18.01'	1'46'58"	4'03'35"

Curve #2
 Curve Data Based on Centerline
 Rad. = 150' Delta = 58'10'07" Tangent = 83.44'
 Arc = 152.28' L.C. = 145.83' Def./Ft. = 11.45954 Min.

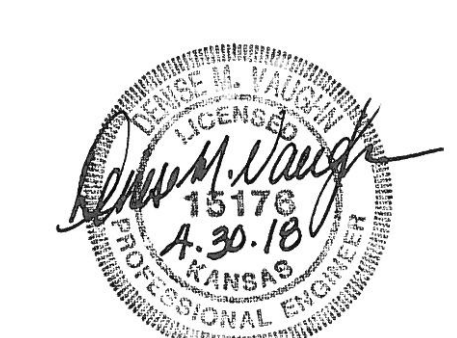
Station	Arc	Face Chord Length		Defl.	Total Defl.
		8' Left	8' Right		
0+44.57	-	-	-	0'00'00"	0'00'00"
0+50.00	5.43'	6.33'	4.52'	1'02'14"	1'02'14"
0+75.00	25.00'	29.13'	20.81'	4'46'29"	5'48'43"
1+00.00	25.00'	29.13'	20.81'	4'46'29"	10'35'12"
1+25.00	25.00'	29.13'	20.81'	4'46'29"	15'21'41"
1+50.00	25.00'	29.13'	20.81'	4'46'29"	20'08'11"
1+75.00	25.00'	29.13'	20.81'	4'46'29"	24'54'40"
1+96.85	21.85'	25.47'	18.19'	4'10'24"	29'05'04"

Curve #3
 Curve Data Based on Centerline
 Rad. = 120' Delta = 60'30'10" Tangent = 69.99'
 Arc = 126.72' L.C. = 120.91' Def./Ft. = 14.32357 Min.

Station	Arc	Face Chord Length		Defl.	Total Defl.
		8' Left	8' Right		
1+96.85	-	-	-	0'00'00"	0'00'00"
2+00.00	3.15'	2.49'	3.81'	0'45'07"	0'45'07"
2+25.00	25.00'	19.76'	30.15'	5'58'06"	6'43'13"
2+30.80	5.80'	4.59'	7.01'	1'23'04"	8'06'17"
2+50.00	19.20'	15.18'	23.17'	4'35'01"	12'41'18"
2+75.00	25.00'	19.76'	30.15'	5'58'05"	18'39'23"
2+83.19	8.19'	6.48'	9.89'	1'57'19"	20'36'42"
3+00.00	16.81'	13.30'	20.29'	4'00'47"	24'37'29"
3+23.57	23.57'	18.63'	28.43'	5'37'36"	30'15'05"



Roll type curb & gutter to be constructed on the pavement on this sheet. Top of curb elevation are given for full height curb.



Baughman Rocky Ford 2nd Addition - Phase I
33RD ST SOUTH
 Sta. 0+00 to Sta. 3+23.57

Baughman Company, P.A. 315 Ellis St. Wichita, KS 67211 P 316-262-7271 F 316-262-0149
 ENGINEERING | SURVEYING | PLANNING | LANDSCAPE ARCHITECTURE

PROJECT NUMBER 472-85430	DESIGN DMV	DRAWN JAK
REVISIONS:	APPROVED	DATE 2/18
	SCALE Noted	SHEET 7 OF 27

E:\Projects\Rocky Ford 2nd Addition_Engineering\Phase I\Str_1712-ES93\STR PLANS.DWG