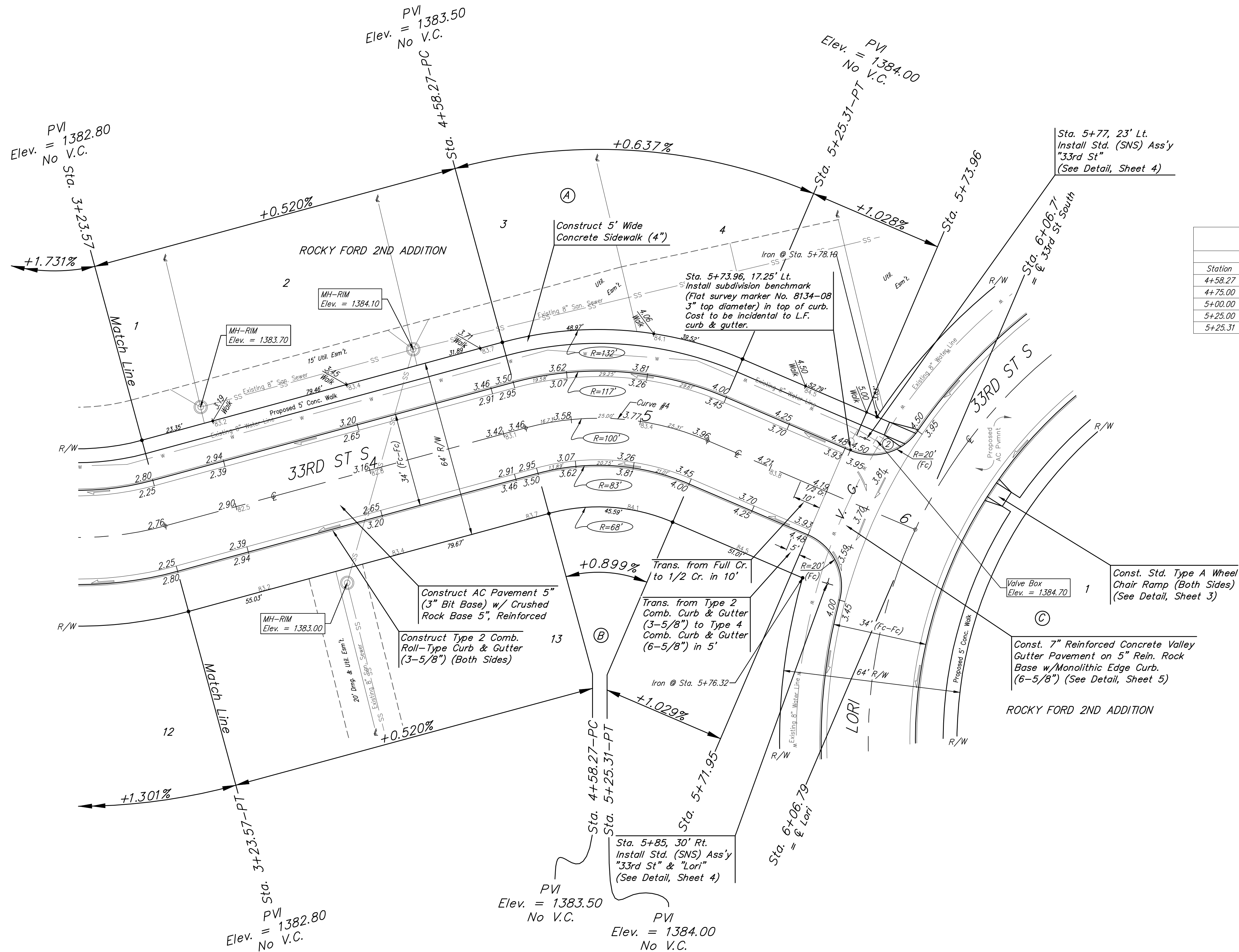
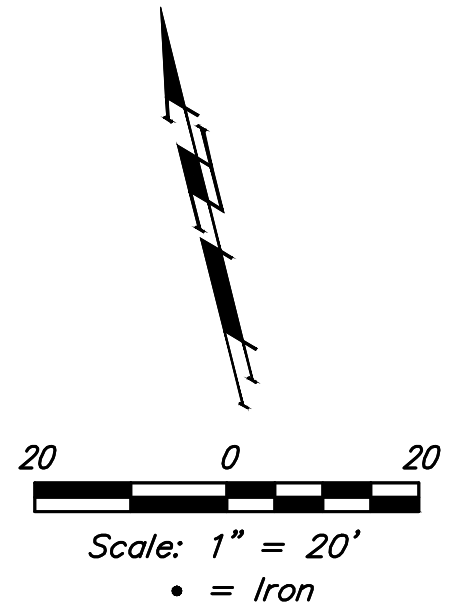
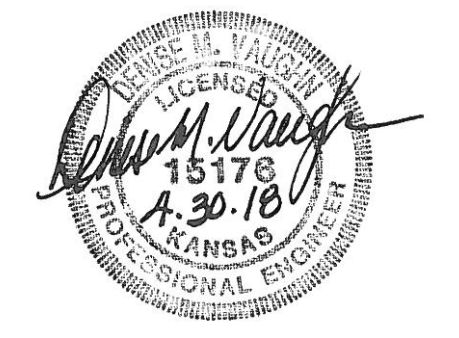


BENCHMARK:
 City of Wichita Benchmark Disk at
 South End of Hubguard on the SW
 Cor. of R.C.B.C., West Side of Rock
 Road, 706' North-northwest of the
 Northwest Corner of Lot 44, Block
 A, Rocky Ford Addition.
 Elev. = 1368.14 NAVD88



Curve #4
 Curve Data Based on Centerline
 Rad. = 100' Delta = 38°24'44" Tangent = 34.84'
 Arc = 67.04' L.C. = 65.79' Def./Ft. = 17.18924 Min.

Station	Arc	Face Chord Length		Defl.	Total Defl.
		8' Left	8' Right		
4+58.27	-	-	-	0'00"00"	0'00"00"
4+75.00	16.73'	20.89'	12.53'	4'47"35"	4'47"35"
5+00.00	25.00'	31.17'	18.70'	7'09"43"	11'57"18"
5+25.00	25.00'	31.17'	18.70'	7'09"44"	19'07"02"
5+25.31	0.31'	0.39'	0.23'	0'05"20"	19'12"22"



Roll type curb & gutter to be constructed on the pavement on this sheet. Top of curb elevation are given for full height curb.

Baughman		Rocky Ford 2nd Addition - Phase I 33RD ST SOUTH Sta. 3+23.57 to Sta. 6+06.79	
Baughman Company, P.A. 315 Ellis St. Wichita, KS 67211 P 316-262-7271 F 316-262-0149 ENGINEERING SURVEYING PLANNING LANDSCAPE ARCHITECTURE			
PROJECT NUMBER 472-85430	DESIGN DMV	DRAWN JAK	APPROVED DATE 2/18
REVISIONS:	SCALE Noted SHEET		
			8 OF 27