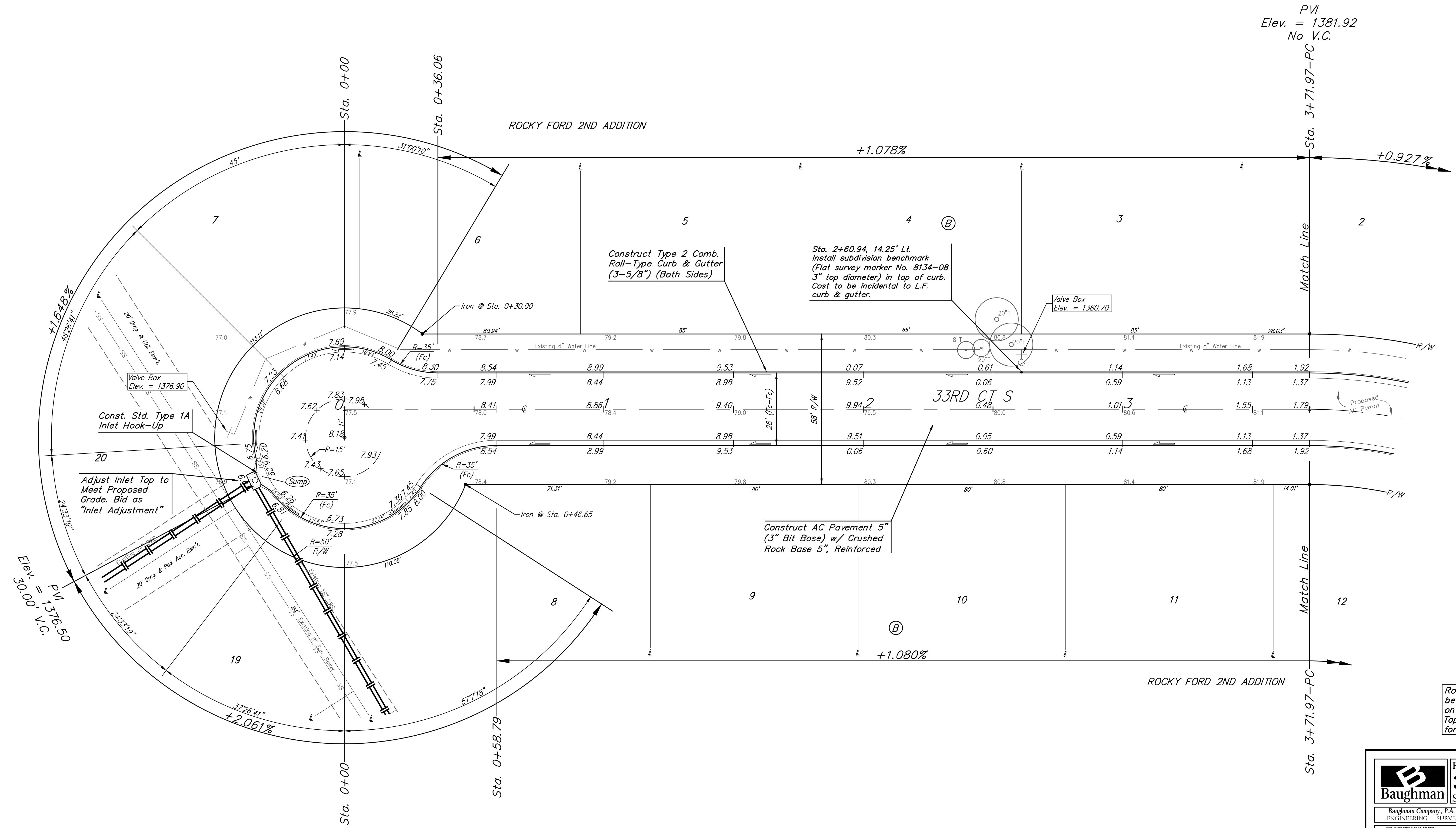
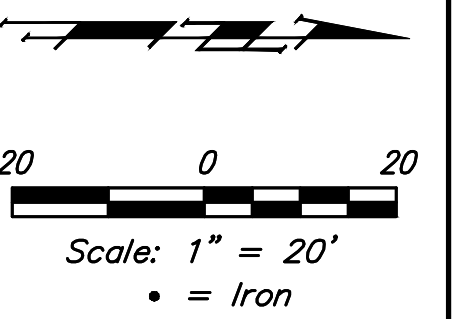


BENCHMARK:
 City of Wichita Benchmark Disk at
 South End of Hubguard on the SW
 Cor. of R.C.B.C., West Side of Rock
 Road, 706' North-northwest of the
 Northwest Corner of Lot 44, Block
 A, Rocky Ford Addition.
 Elev. = 1368.14 NAVD88



PVI
 Elev. = 1381.92
 No V.C.

Construct Type 2 Comb.
 Roll-Type Curb & Gutter
 (3-5/8") (Both Sides)

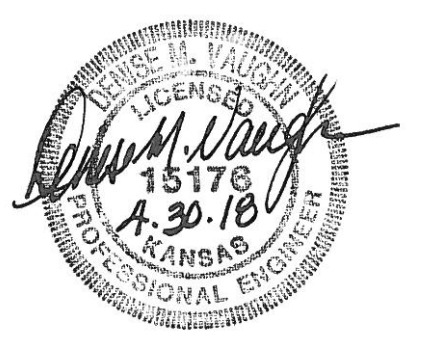
Sta. 2+60.94, 14.25' Lt.
 Install subdivision benchmark
 (Flat survey marker No. 8134-08
 3" top diameter) in top of curb.
 Cost to be incidental to L.F.
 curb & gutter.

Const. Std. Type 1A
 Inlet Hook-Up

Adjust Inlet Top to
 Meet Proposed
 Grade. Bid as
 "Inlet Adjustment"

Construct AC Pavement 5"
 (3" Bit Base) w/ Crushed
 Rock Base 5", Reinforced

Roll type curb & gutter to
 be constructed on the pavement
 on this sheet.
 Top of curb elevation are given
 for full height curb.



		Rocky Ford 2nd Addition - Phase 1	
		33RD CT SOUTH Sta. 0+00 to Sta. 3+71.97	
<small>Baughman Company, P.A. 315 Ellis St. Wichita, KS 67211 P 316-262-7271 F 316-262-0149 ENGINEERING SURVEYING PLANNING LANDSCAPE ARCHITECTURE</small>			
PROJECT NUMBER 472-85430	DESIGN DMV	DRAWN JAK	
REVISIONS:	APPROVED	DATE 2/18	
	SCALE Noted	SHEET	
			9 OF 27