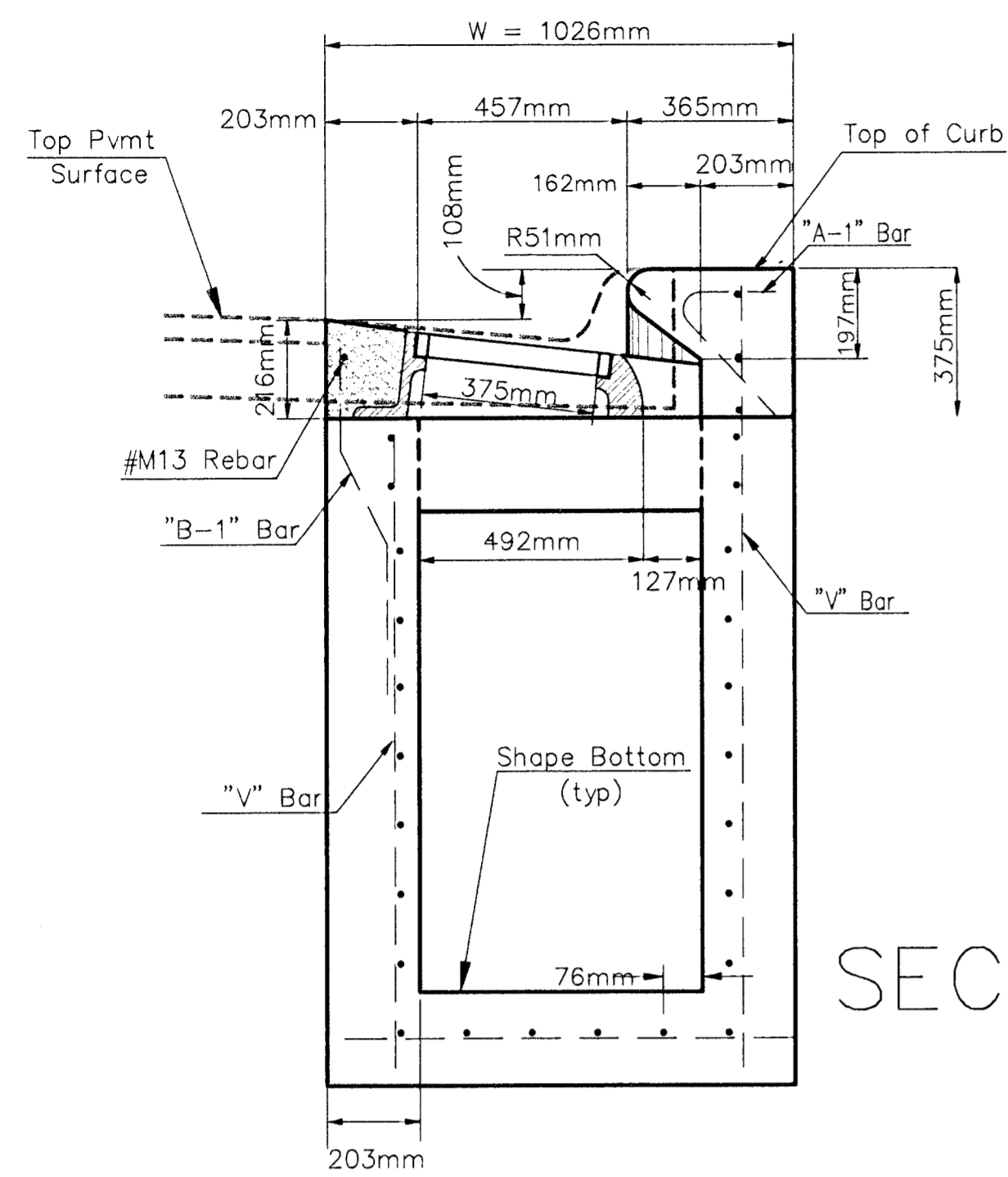
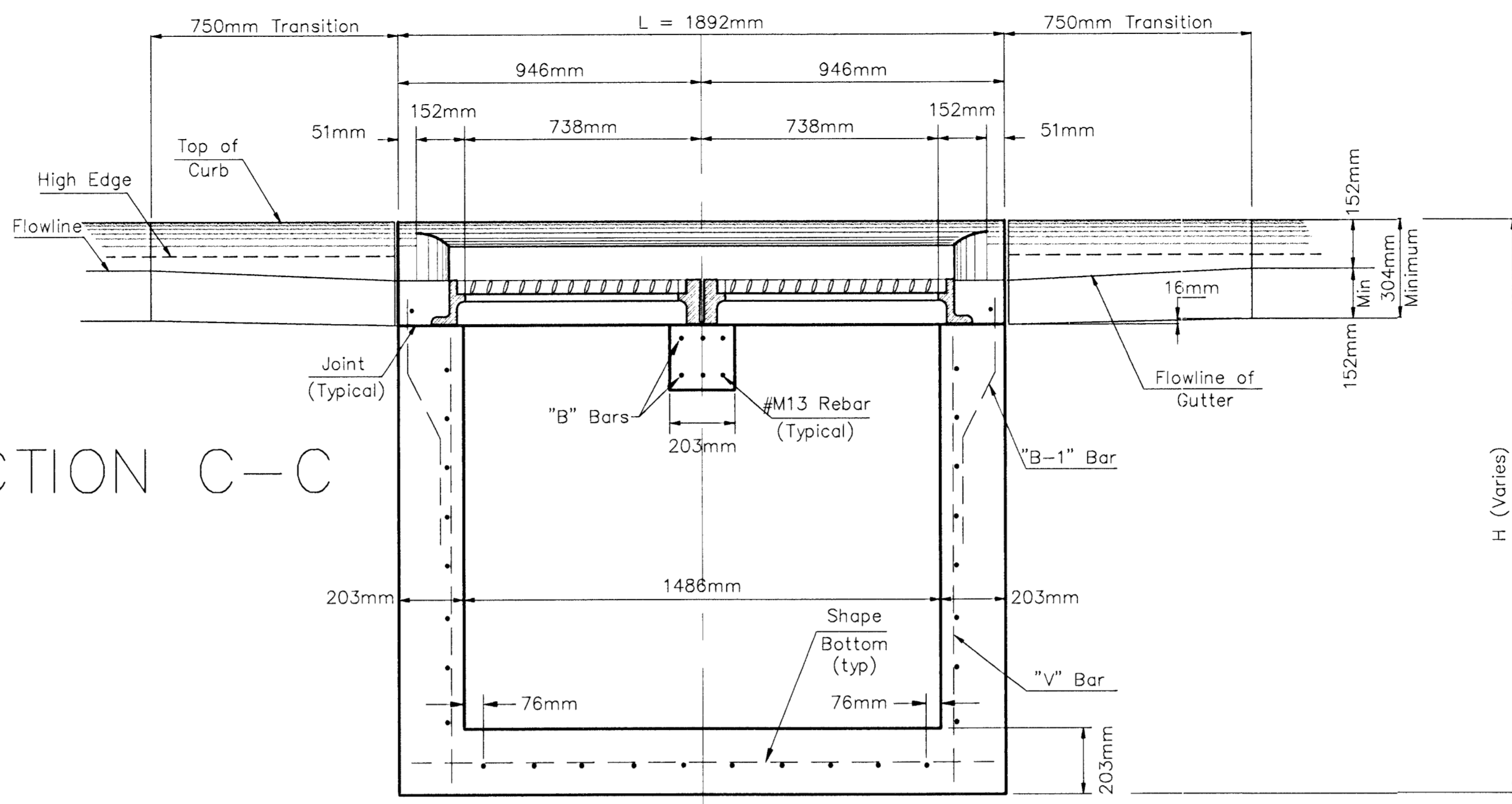


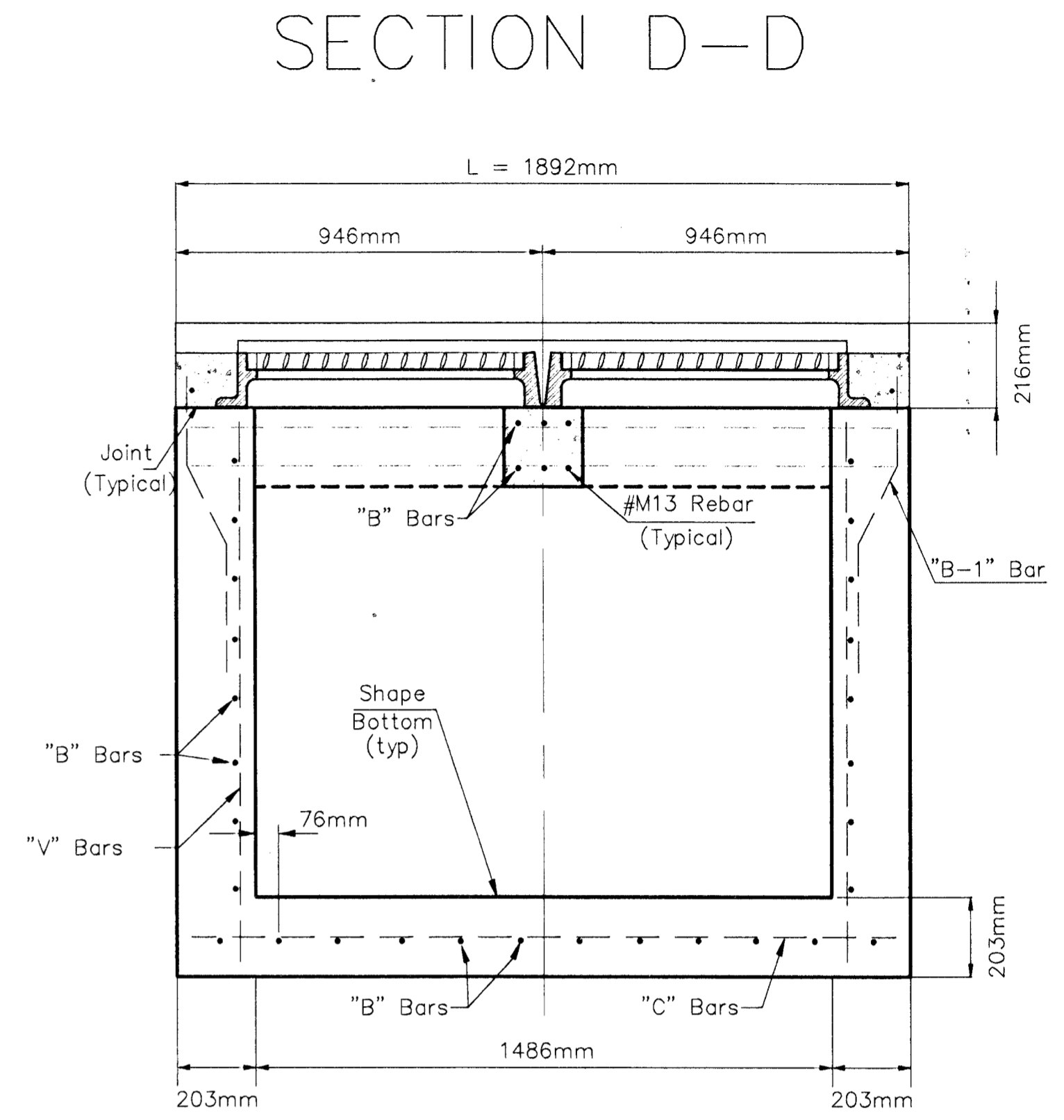
FHWA REGION NO.	STATE	PROJECT NO.	FISCAL YEAR	SHEET NO.	TOTAL SHEETS
7	KANSAS	87N-0094-01	1998	45	202



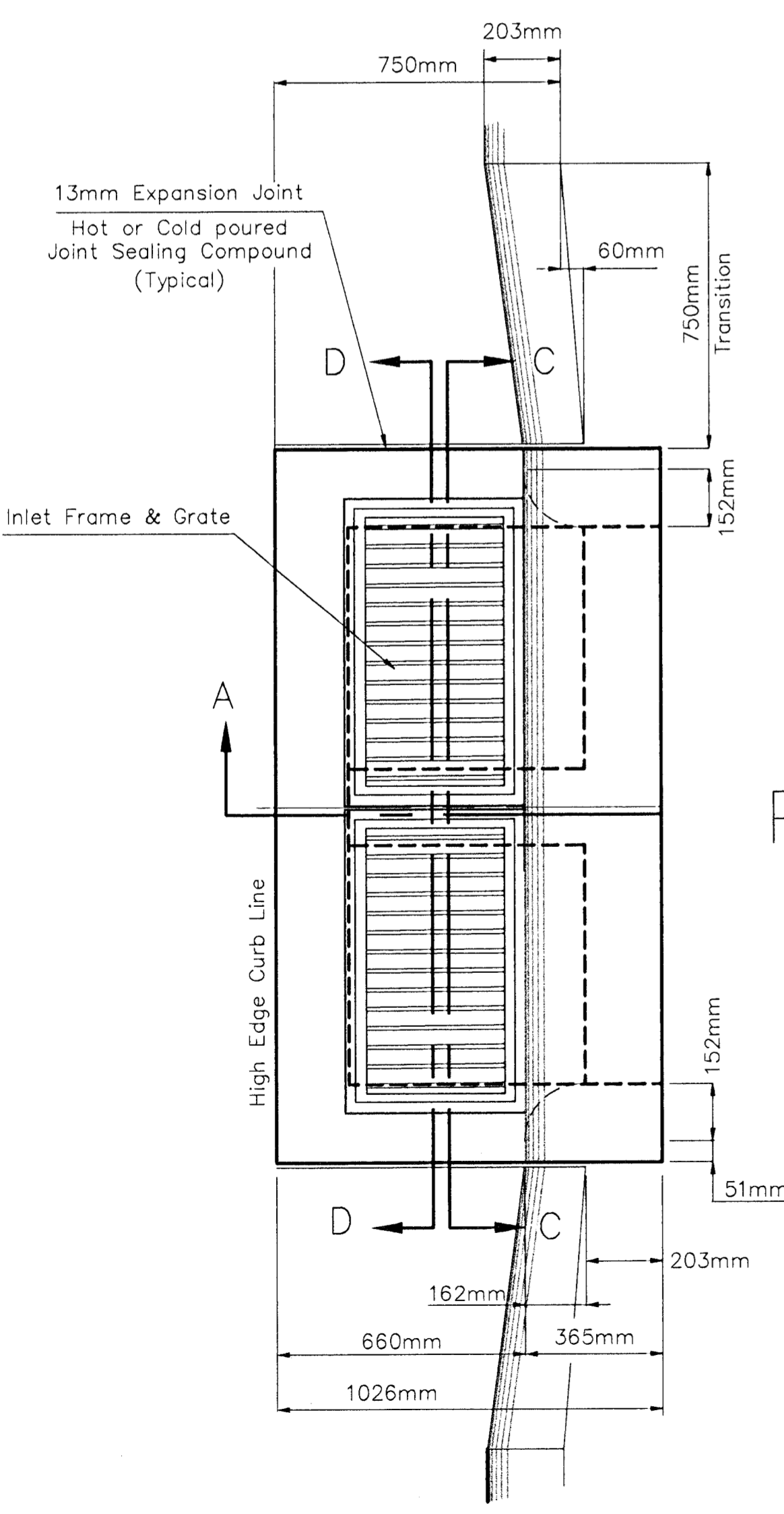
SECTION A-A



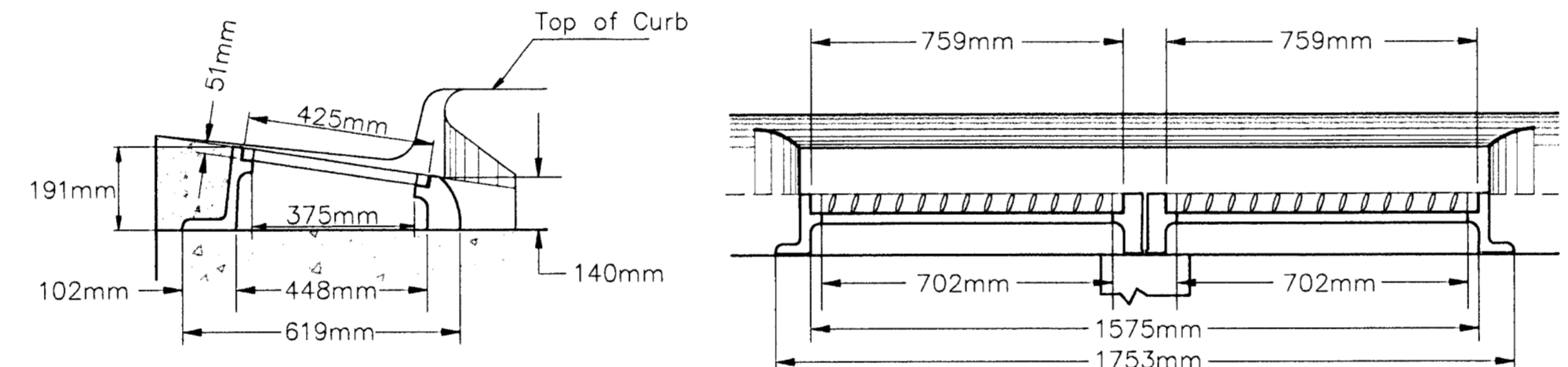
SECTION C-C



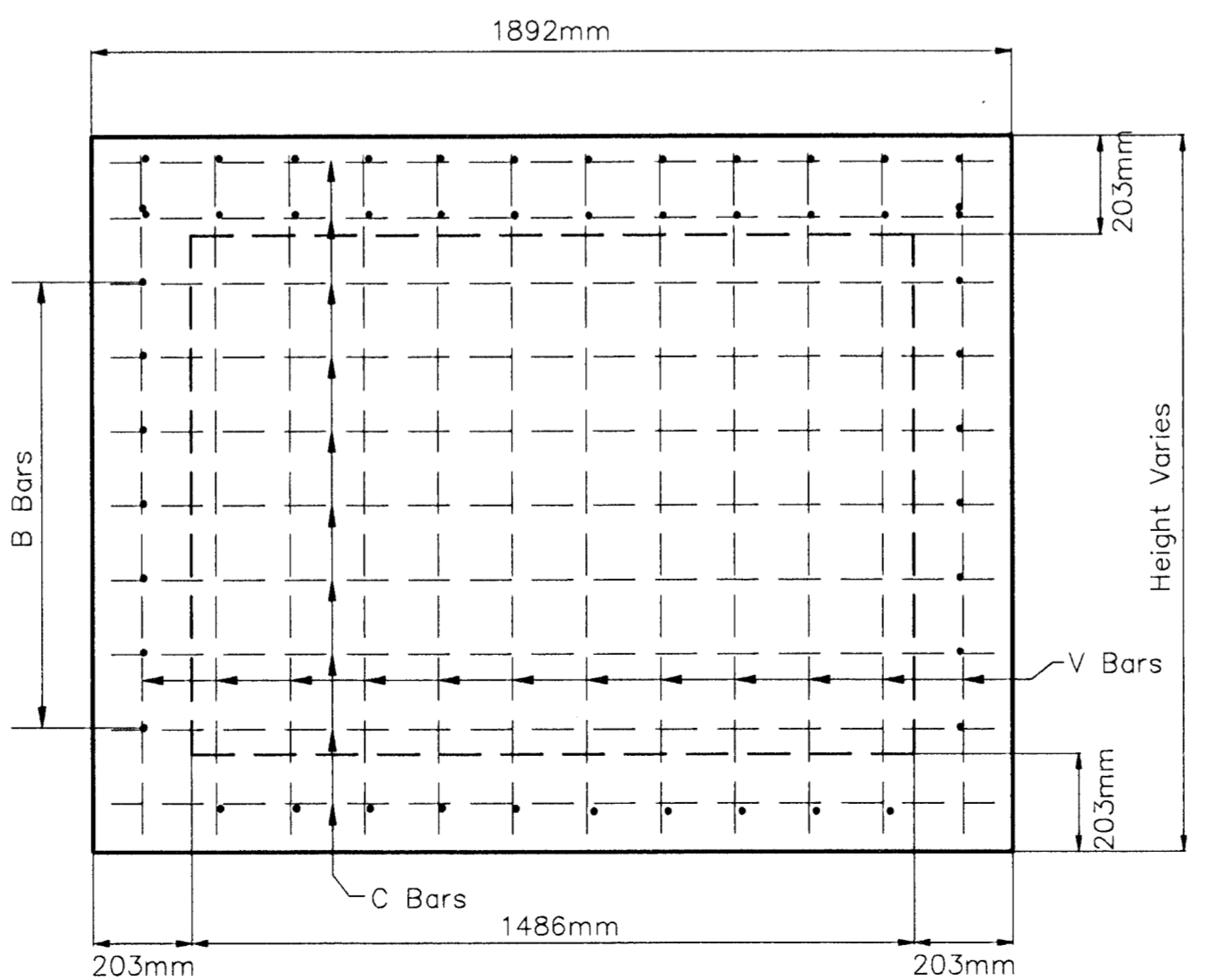
SECTION D-D



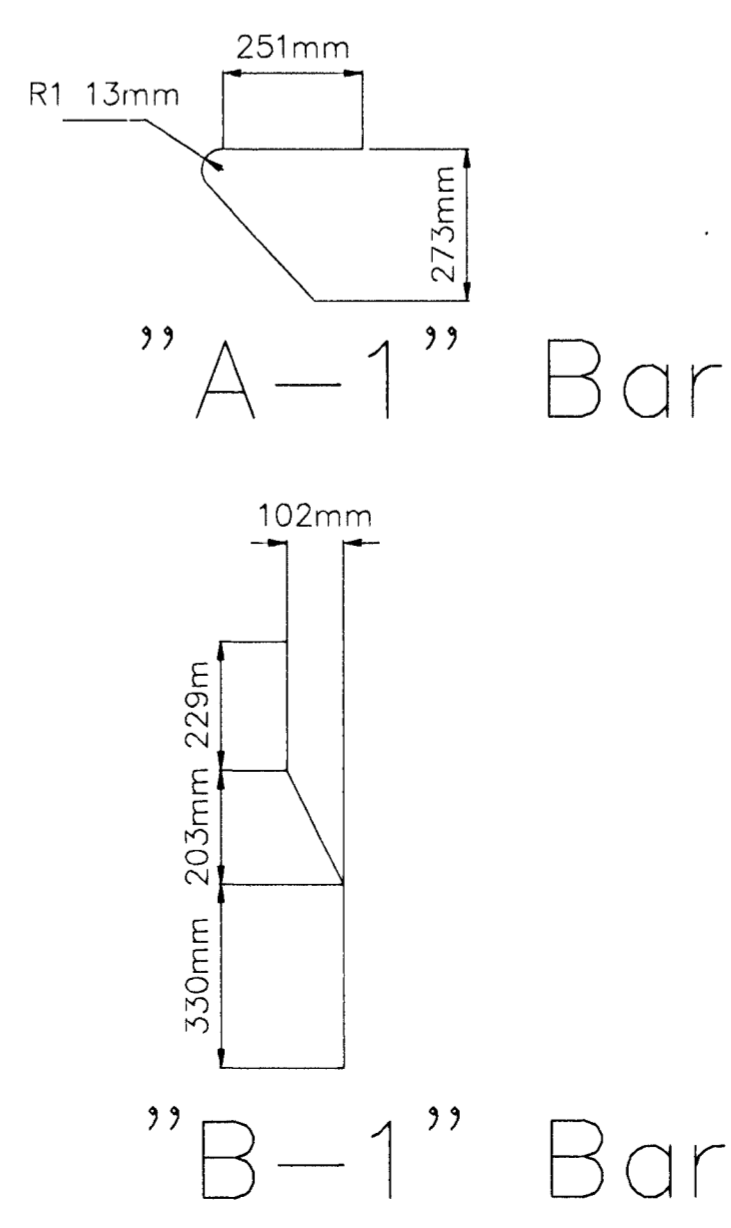
PLAN VIEW



INLET FRAME WITH TWO-PIECE GRATE
(Neehan R-3288 HV2 Inlet or Approved Equal)



REAR WALL



"A-1" Bar

"B-1" Bar

General Notes

1. Use class A mix specified for the City of Wichita concrete pavement throughout curb inlet. All exposed edges shall be finished with an edging tool. Reinforcing bars shall be bent around pipe.
2. Inlet invert shall be shaped with Class A or commercial grade concrete to create flow channels and to increase hydraulic efficiency such that the inlet will be self cleaning between all inlet and/or outlet pipes.
3. All bars are #M13 with 150mm spacing and shall have a minimum clearance of 35mm unless otherwise noted on the plans.
4. No deductions will be made in pay length of curb, gutter, or curb and gutter through the inlet area.
5. Use Neehan R-3288 HV2 Double Inlet Frame w/ two piece grate or approved equal. Inlet frame to be proof load tested to 178,000 N. on the unsupported side.
6. Reinforcing bars shall be cut or bent around pipes. No deduction in concrete quantities shall be made for pipe openings.
7. The vanes of the grate shall be oriented with respect to the flow arrows shown on the plans.
8. All castings shall be gray iron and shall comply with KDOT Standard Specifications.
9. See Pavement Underdrain Detail Sheet No. 40

Revised - Dec. 1995 - SGSJR

CENTRAL PROJECT
CURB INLET (Type 2)(Special)
STANDARD DETAIL

BAUGHMAN COMPANY P. A.
ENGINEERING, SURVEYING, & PLANNING
316-262-7271 • 315 ELLIS • WICHITA, KANSAS 67211

PROJECT NUMBER
472-82908

DESIGN STAFF	DRAWN STAFF	APPROVED	DATE NOV 98	SCALE NONE	SHEET 45 OF 202
--------------	-------------	----------	-------------	------------	-------------------------------