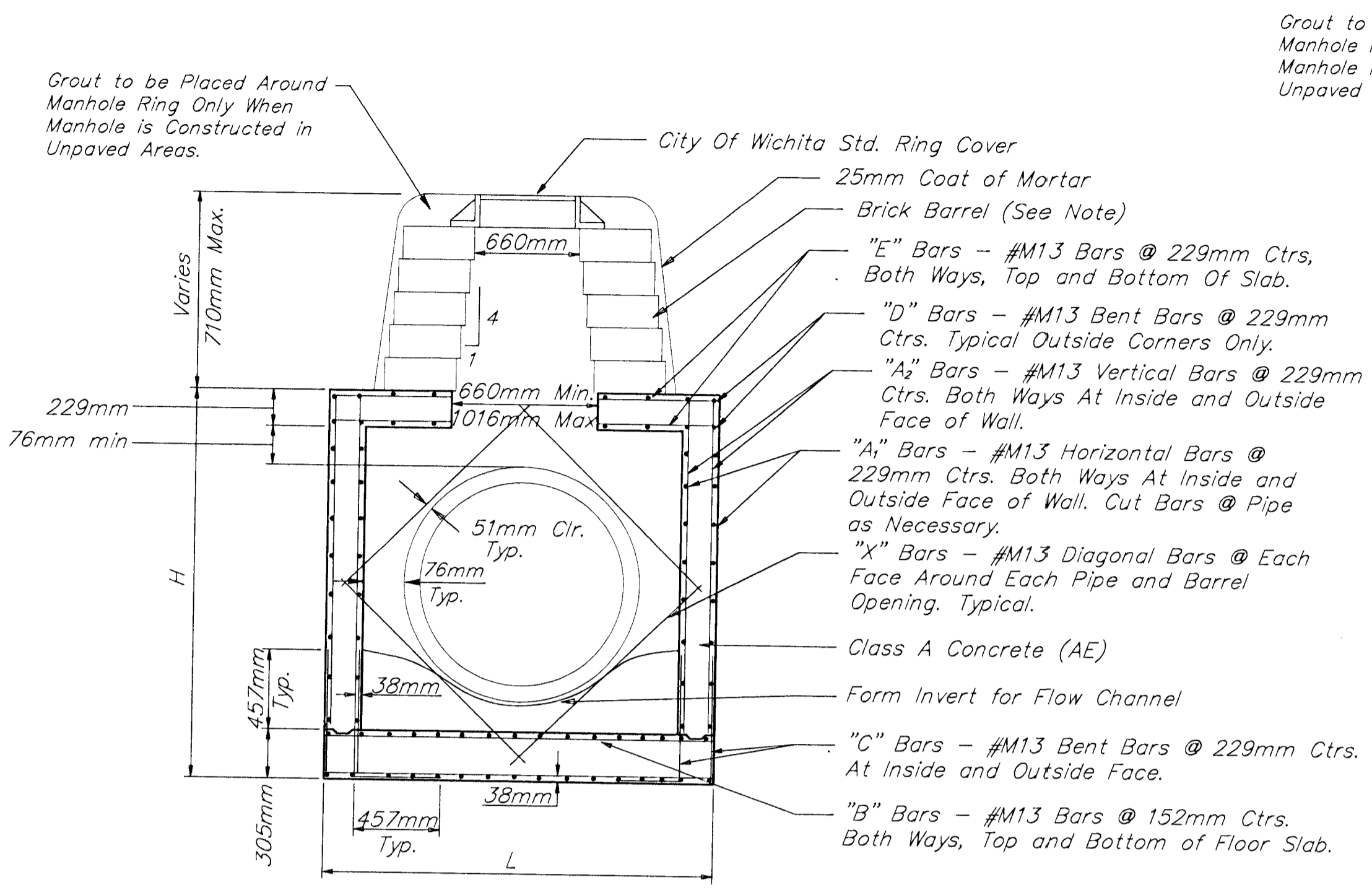
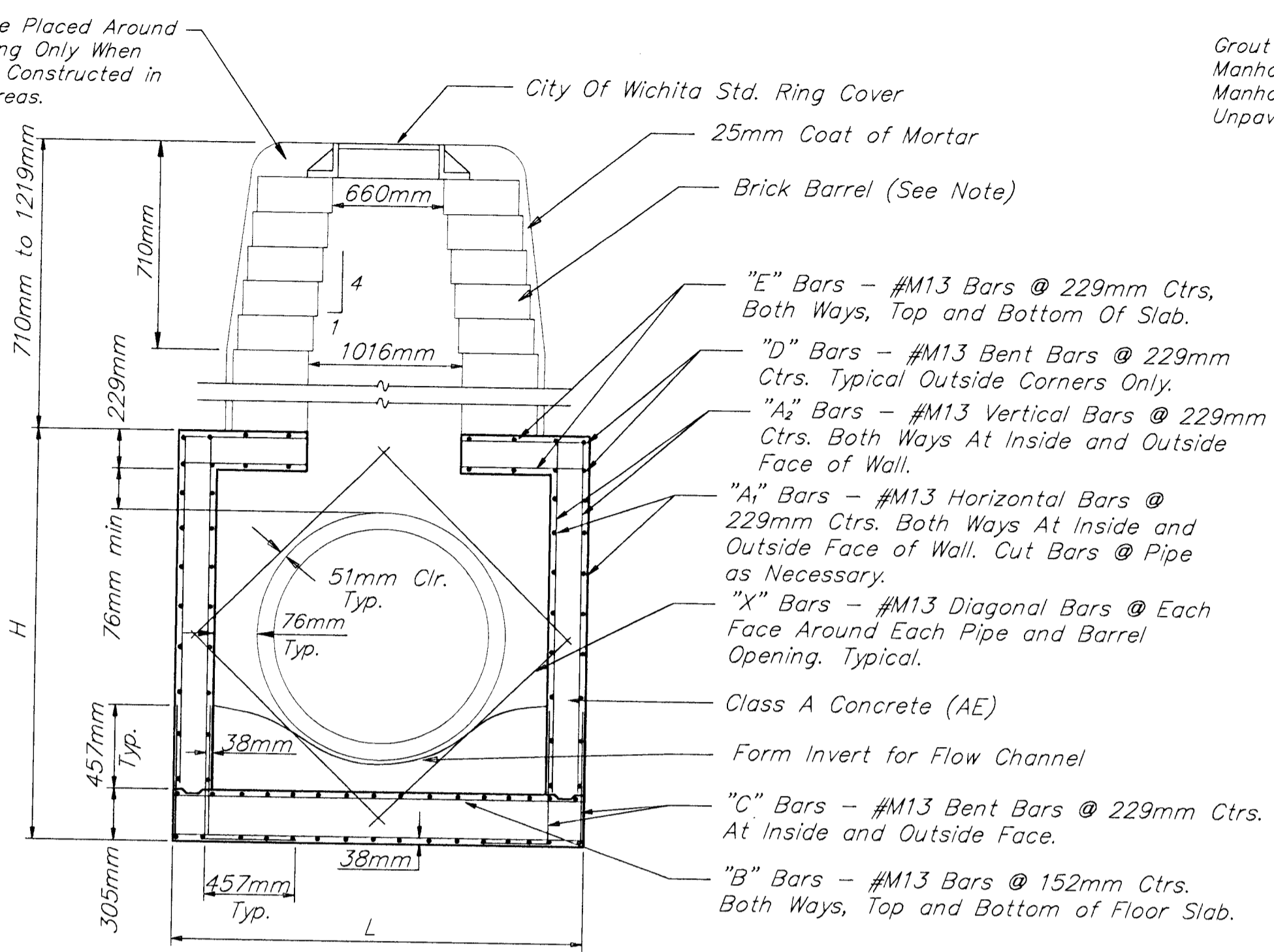


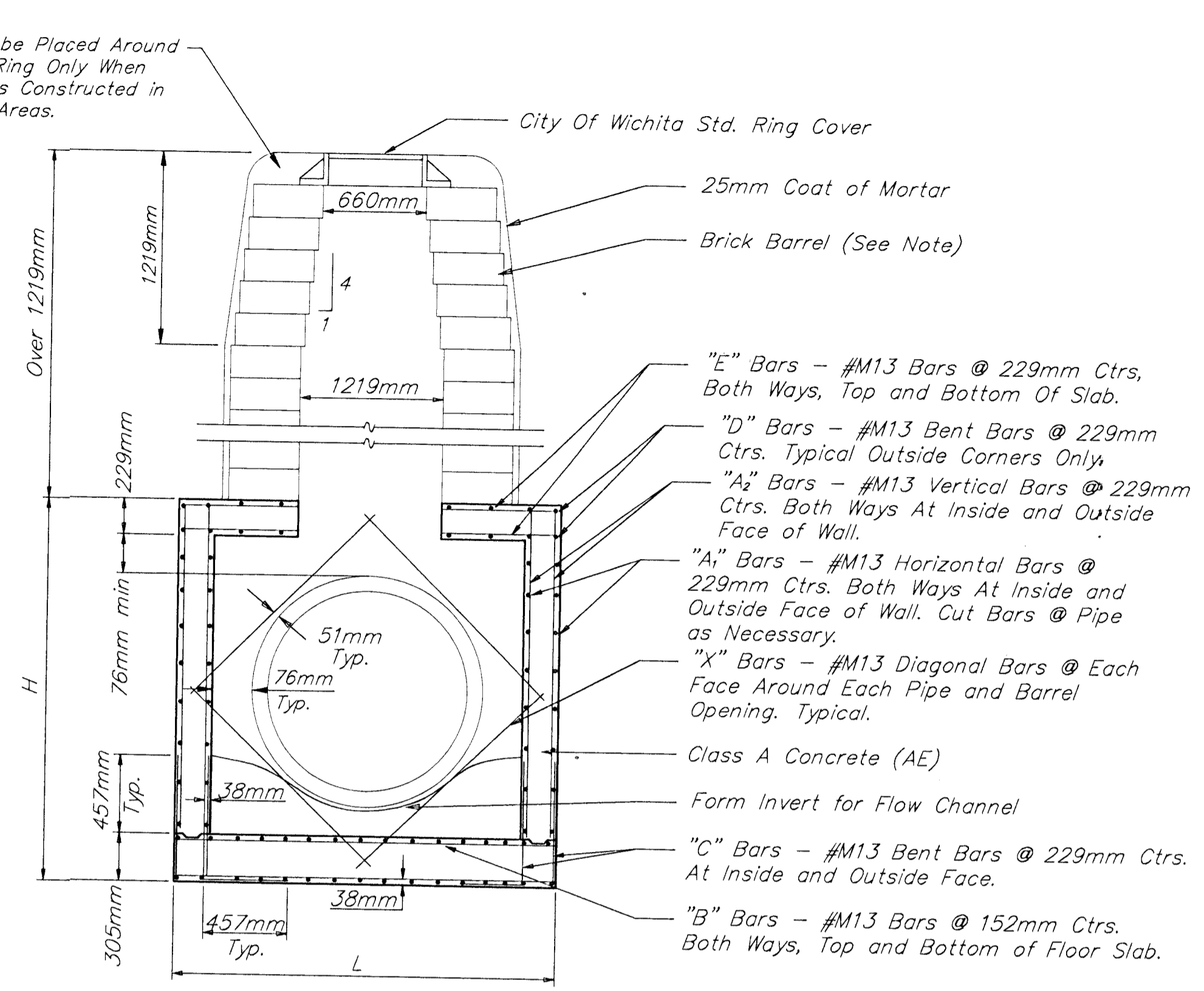
FHWA REGION NO.	STATE	PROJECT NO.	FISCAL YEAR	SHEET NO.	TOTAL SHEETS
7	KANSAS	87N-0094-01	1998	47	202



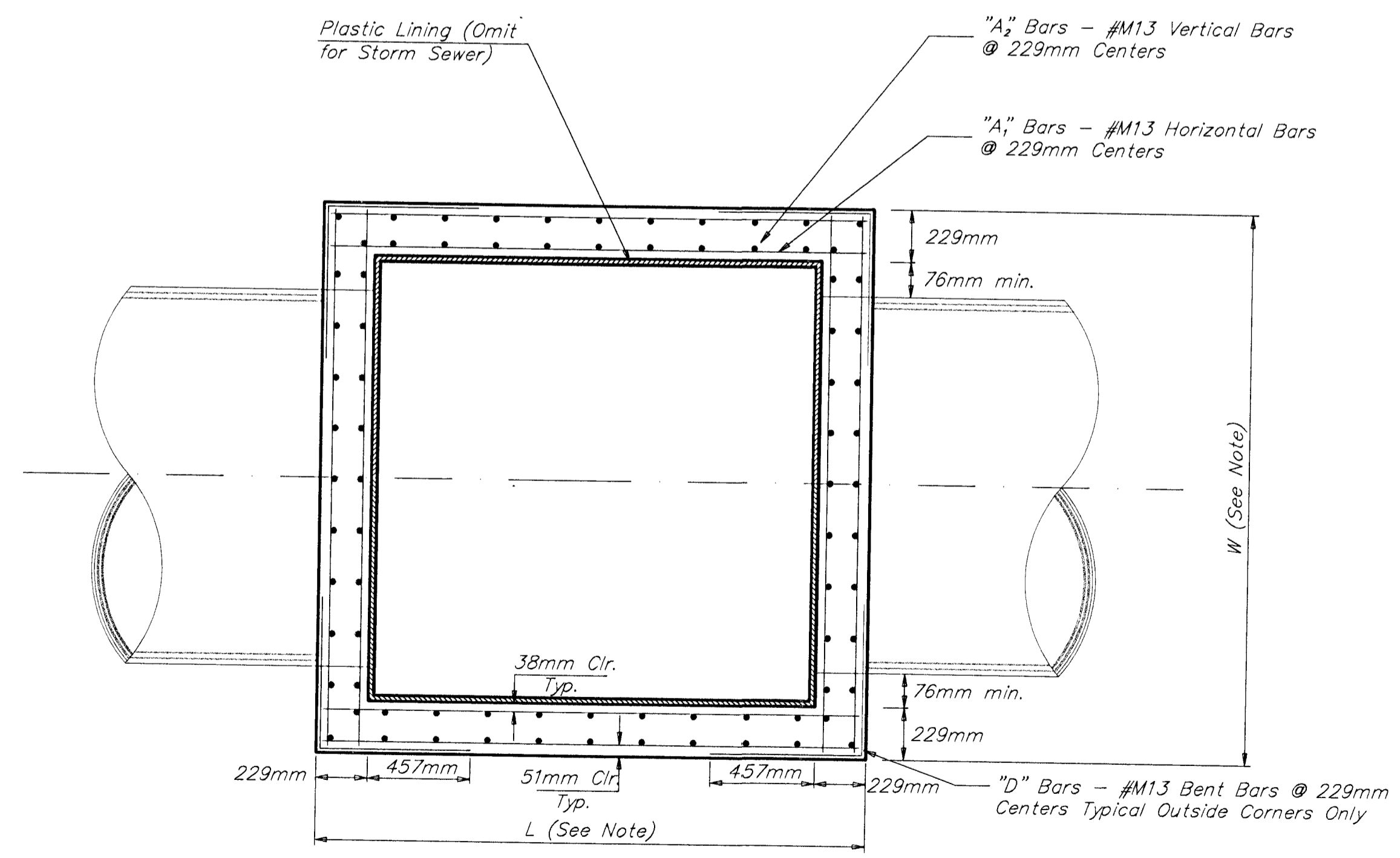
REINFORCED CONCRETE MANHOLE
DEPTH OF STACK: 0mm TO 710mm



REINFORCED CONCRETE MANHOLE
DEPTH OF STACK: 710mm TO 1219mm



REINFORCED CONCRETE MANHOLE
DEPTH OF STACK: OVER 1219mm



TOP VIEW

GENERAL NOTES

BRICK BARRELS LESS THAN 4.9m DEEP SHALL HAVE 203mm WALLS EXCEPT WHEN LOCATED WITHIN PUBLIC STREET OR ALLEY PAVEMENT; THEN THE WALL SHALL BE 305mm. THE "L" AND "W" DIMENSIONS SHALL BE A MINIMUM OF 1880mm TO ACCOMMODATE THE 305mm BRICK STACK. BARRELS SHALL BE SUBSIDIARY THE BID ITEM "REINFORCED CONCRETE MANHOLE." PRECAST STACKS SHALL BE ALLOWED.

THE FLOORS OF ALL MANHOLES SHALL BE SHAPED WITH FLOW CHANNELS SUCH THAT THE MANHOLES WILL BE SELF CLEANING AND FREE OF AREAS WHERE SOLIDS COULD BE DEPOSITED AS SEWAGE FLOWS THROUGH THE MANHOLE FROM ALL INLET PIPES TO THE OUTLET PIPE. FLOW CHANNELS SHALL BE FORMED TO MATCH THE BOTTOM HALVES OF THE INFLOWING PIPES AND THE OUTFLOWING PIPE AS SHOWN BY THE DRAWINGS. MANHOLE FLOORS SHALL HAVE SLOPES OF 25.000% IN THE AREAS OUTSIDE OF THE FLOW CHANNELS SLOPED TOWARD THE FLOW CHANNELS. PIPES LAID THROUGH MANHOLES SHALL HAVE THE TOP HALF REMOVED TO NEAT LINES FOR THE FULL INSIDE DIAMETER OF THE MANHOLE. MANHOLE FLOORS SHALL THEN BE SHAPED AROUND THE BOTTOM HALF OF THE PIPE WHICH FORMS THE FLOW CHANNEL. NO ADDITIONS IN QUANTITIES SHALL BE ALLOWED FOR FLOOR SHAPING.

FOR NOTES AND DETAILS ON CAST IRON COVERS AND RINGS, SEE THE "CITY OF WICHITA" MANHOLE FRAME AND COVER DETAIL.

CITY OF WICHITA STANDARD
REINFORCED CONCRETE MANHOLE

BAUGHMAN COMPANY P. A.
ENGINEERING, SURVEYING, & PLANNING
316-282-7271 • 315 ELLIS • WICHITA, KANSAS 67211

PROJECT NUMBER
472-82908

DESIGN C.O.W.	DRAWN Staff	APPROVED JFB	DATE NOV 98	SCALE NONE	SHEET 47 202
------------------	----------------	-----------------	----------------	---------------	----------------------------------