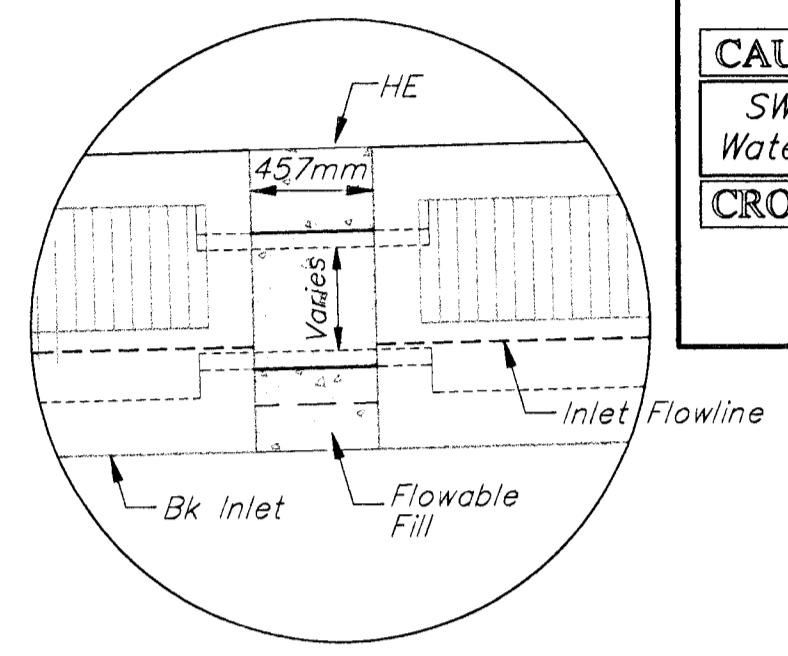


**BENCHMARKS**

BM #4 - "□" Top of Curb @ 15.24m North and 4.72m West of the Centerline of both Joann and Central. Elev. = 398.589 SI Units (1307.69 MSL Datum)

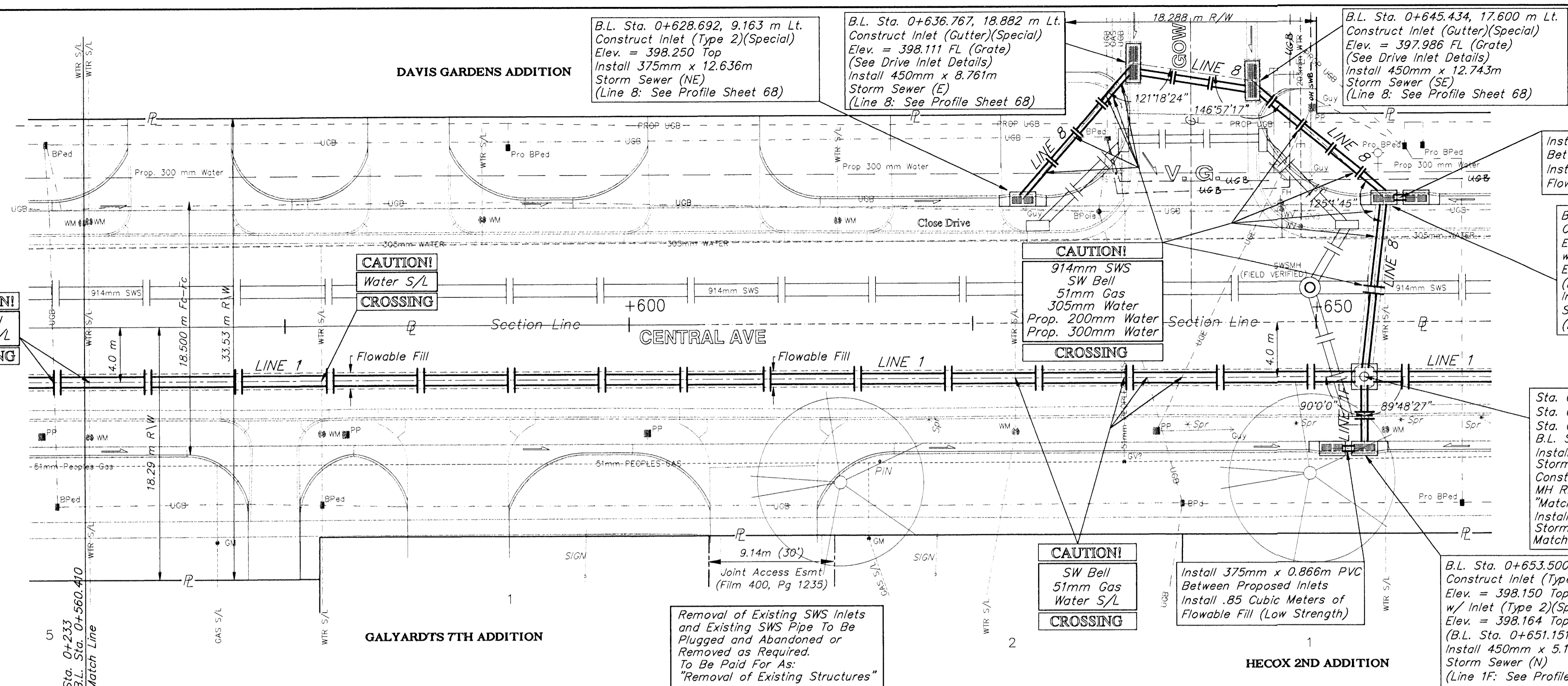
BM #5 - City Disc Located @ 9.14m South and 12.8m East of the Centerline of both Sheridan and Central. Elev. = 399.024 SI Units (1309.08 MSL Datum)

**ADJOINING TYPE 2 DOUBLE CURB INLET CONNECTION**



Install Storm Sewer (375mm) (PVC) Between Inlets as Noted in SWS Plan-Profile Sheets. Fill Void between Inlets w/ Flowable Fill such that Thickened Curb Section rests on a Firm, Load Bearing Surface. Flowable Fill to be Paid for as Cubic Meters of Flowable Fill (Low Strength). Paving Contractor to Install Thickened Curb Section. (See Paving Plans for Thickened Curb Section Detail.)

FHWA REGION NO.	STATE	PROJECT NO.	FISCAL YEAR	SHEET NO.	TOTAL SHEETS
7	KANSAS	87N-0094-01	1998	53	202



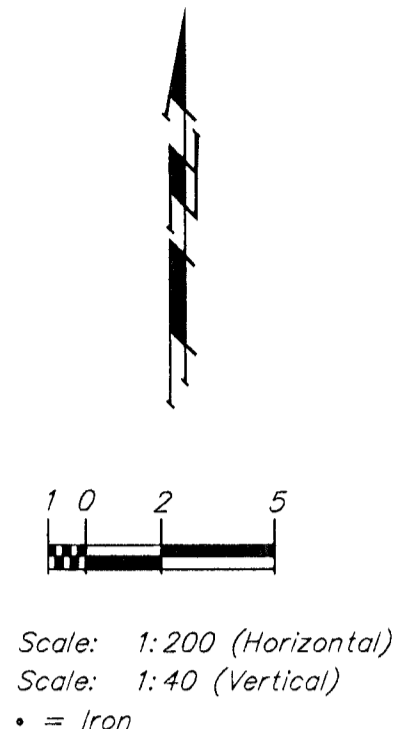
Install 375mm x 0.866m PVC Between Proposed Inlets. Install .85 Cubic Meters of Flowable Fill (Low Strength)

B.L. Sta. 0+654.984, 9.163 m Lt. Construct Inlet (Type 2)(Special) Elev. = 398.050 Top w/ Inlet (Type 2)(Special) Adjoining (E) Elev. = 398.060 Top (B.L. Sta. 0+657.333, 9.163 m Lt.) Install 450mm x 13.246m Storm Sewer (S) (Line 8: See Profile Sheet 68)

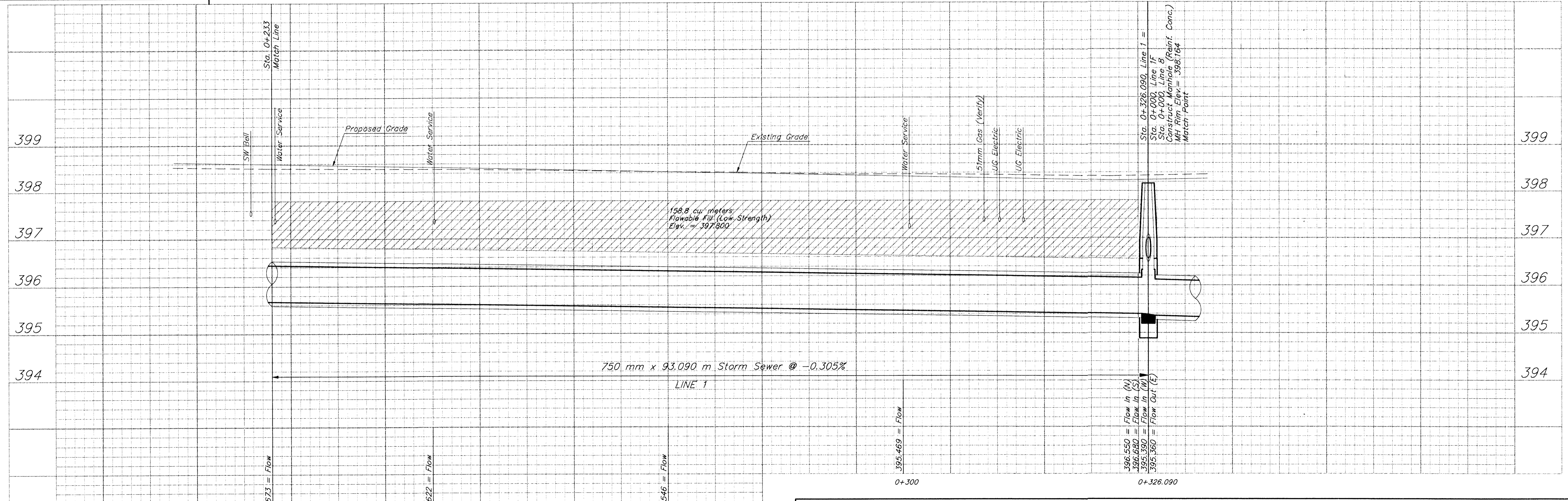
Sta. 0+326.090, Line 1 = Sta. 0+000, Line 1F = Sta. 0+000, Line 8 = B.L. Sta. 0+653.500, 4.0 m Rt. Install 450mm x 5.163m Storm Sewer (S) Construct Manhole (Reinf. Conc.) MH Rim Elev. = 398.164 "Match Rim to Final Pvm't Lift" Install 750mm x 148.888m Storm Sewer (E) Match Point

B.L. Sta. 0+653.500, 9.163 m Rt. Construct Inlet (Type 2)(Special) Elev. = 398.150 Top w/ Inlet (Type 2)(Special) Adjoining (W) Elev. = 398.164 Top (B.L. Sta. 0+651.151, 9.163 m Rt.) Install 450mm x 5.163m Storm Sewer (N) (Line 1F: See Profile Sheet 66)

Removal of Existing SWS Inlets and Existing SWS Pipe To Be Plugged and Abandoned or Removed as Required. To Be Paid For As: "Removal of Existing Structures"



**KDOT METRIC**



PROJECT NUMBER <b>472 - 82908</b>				PROJ. NUMBER 85-05-028	
DESIGN STAFF	DRAWN STAFF	APPROVED JFB	DATE NOV 98	SCALE NOTED	SHEET NAME sww3.dwg
STORM SEWER IMPROVEMENTS - LINE 1 B.L. Sta. 0+560.410 to B.L. Sta. 0+653.500 CENTRAL AVENUE - PHASE 1 - WEST ST TO MCGLEAN				<b>BAUGHMAN COMPANY P. A.</b> ENGINEERING, SURVEYING, & PLANNING 316-282-7271 • 315 ELLIS • WICHITA, KANSAS 67211	