

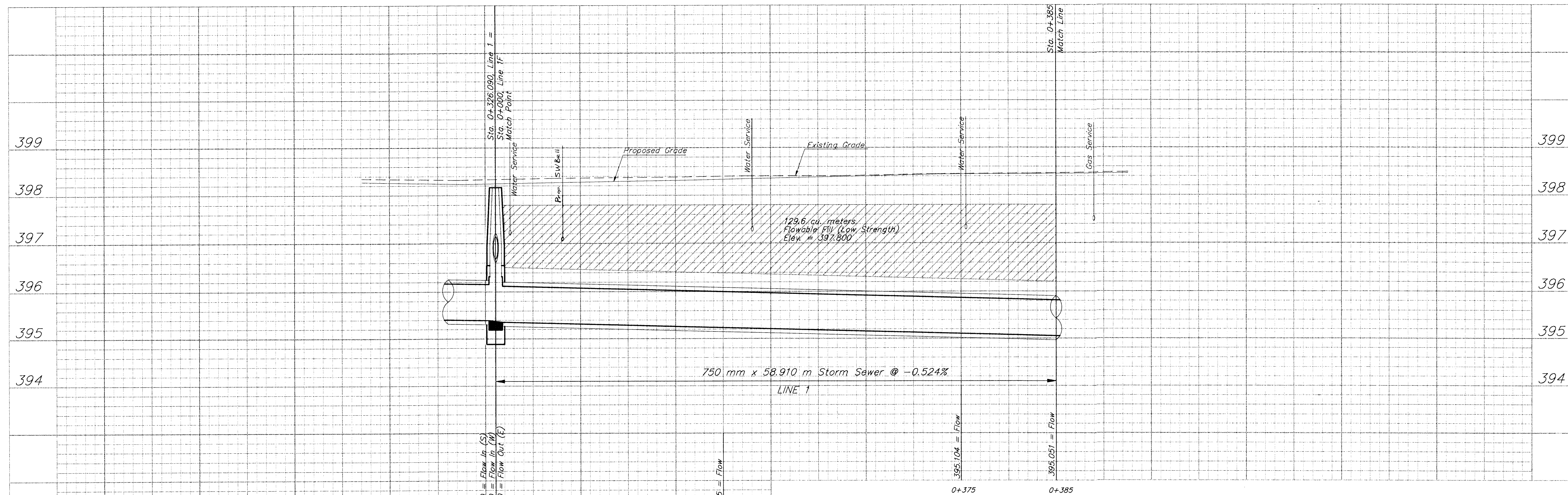
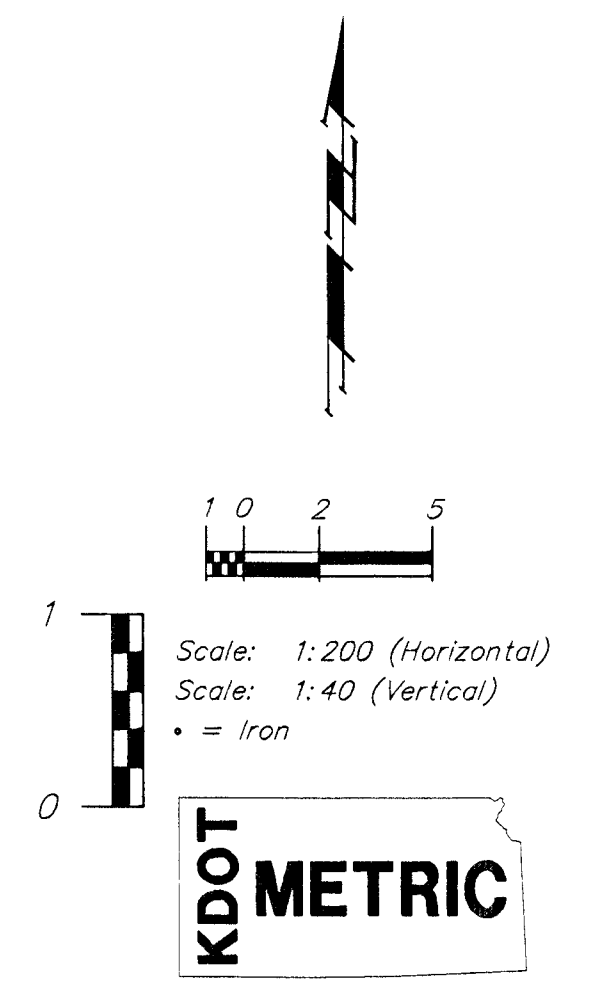
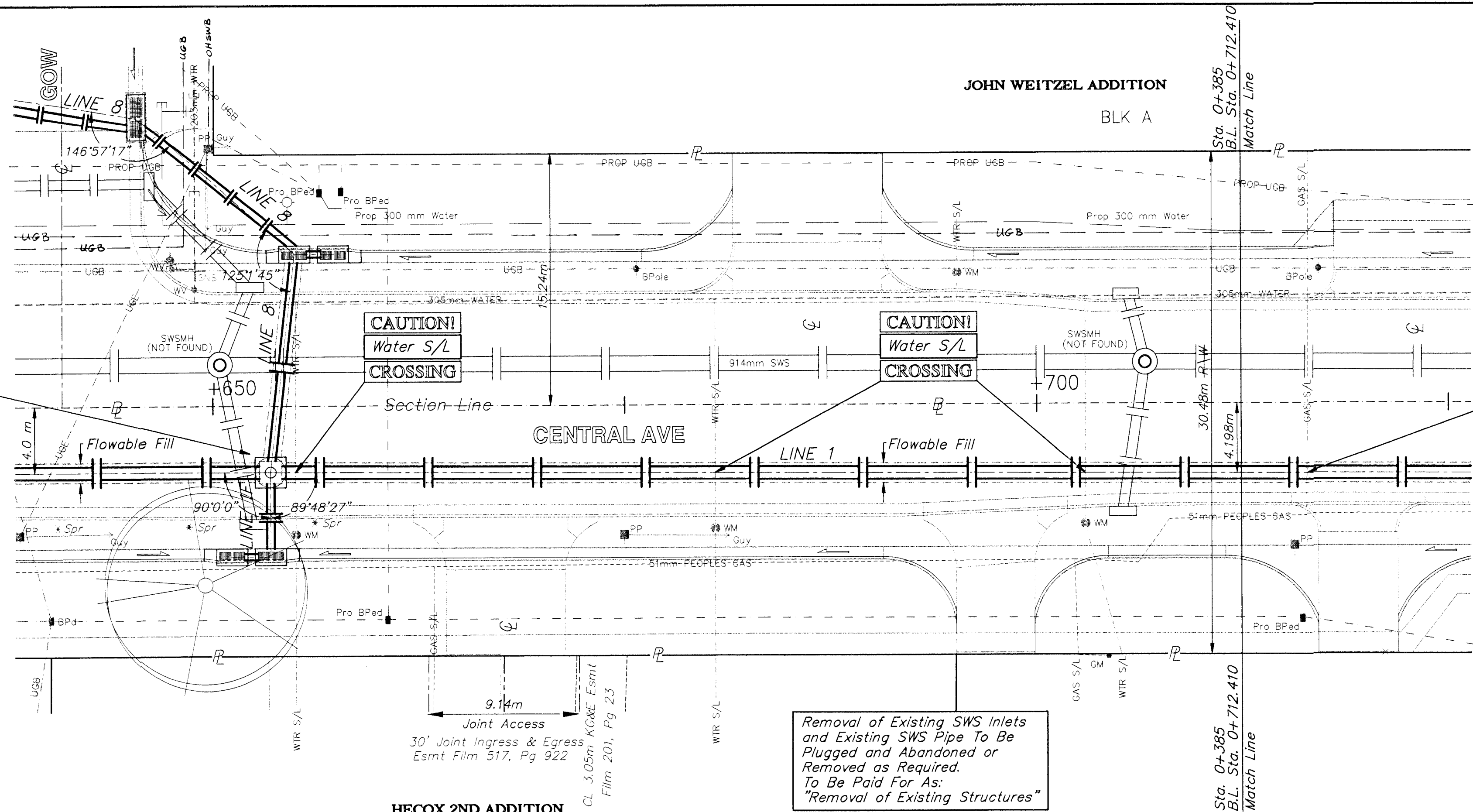
BENCHMARKS

BM #4 - "□" Top of Curb @ 15.24m North and 4.72m West of the Centerline of both Joann and Central. Elev. = 398.589 SI Units (1307.69 MSL Datum)

BM #5 - City Disc Located @ 9.14m South and 12.8m East of the Centerline of both Sheridan and Central. Elev. = 399.024 SI Units (1309.08 MSL Datum)

FHWA REGION NO.	STATE	PROJECT NO.	FISCAL YEAR	SHEET NO.	TOTAL SHEETS
7	KANSAS	87N-0094-01	1998	54	202

Sta. 0+326.090, Line 1 =
Sta. 0+000, Line 1F =
B.L. Sta. 0+653.500, 4.0 m Rt.
Match Point



PROJECT NUMBER 472 - 82908		SHEET NUMBER 95-05-E028		STORM SEWER IMPROVEMENTS - LINE 1	
DESIGN STAFF	DRAWN STAFF	APPROVED JFB	DATE NOV 98	SCALE NOTED	B.L. Sta. 0+653.500 to B.L. Sta. 0+712.410
CENTRAL AVENUE - PHASE 1 - WEST ST TO MCLEAN				BAUGHMAN COMPANY P.A. ENGINEERING, SURVEYING, & PLANNING 318-282-7271 • 315 ELLIS • WICHITA, KANSAS 67211	