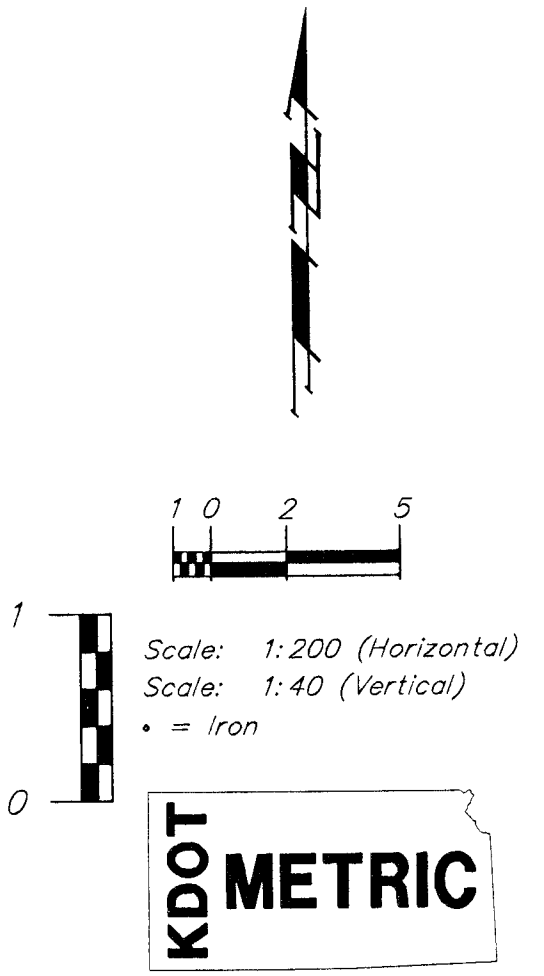
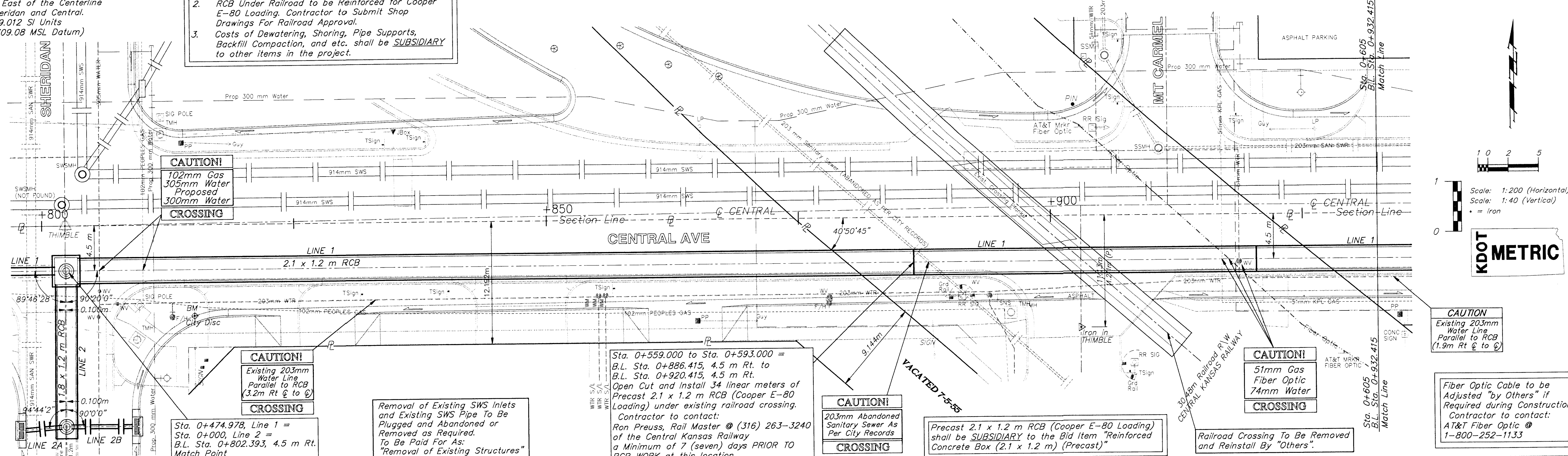


BENCHMARKS

BM #5 - City Disc Located @ 9.14m South and 12.8m East of the Centerline of both Sheridan and Central. Elev. = 399.012 SI Units (1309.08 MSL Datum)

1. Manhole Stacks on Precast RCB located on Centerline of RCB \RCP.
2. RCB Under Railroad to be Reinforced for Cooper E-80 Loading. Contractor to Submit Shop Drawings For Railroad Approval.
3. Costs of Dewatering, Shoring, Pipe Supports, Backfill Compaction, and etc. shall be **SUBSIDIARY** to other items in the project.



CAUTION!
102mm Gas
305mm Water
Proposed
300mm Water
CROSSING

CAUTION!
Existing 203mm
Water Line
Parallel to RCB
(3.2m Rt @ to @)
CROSSING

Sta. 0+474.978, Line 1 =
Sta. 0+000, Line 2 =
B.L. Sta. 0+802.393, 4.5 m Rt.
Match Point

Removal of Existing SWS Inlets
and Existing SWS Pipe To Be
Plugged and Abandoned or
Removed as Required.
To Be Paid For As:
"Removal of Existing Structures"

Sta. 0+559.000 to Sta. 0+593.000 =
B.L. Sta. 0+886.415, 4.5 m Rt. to
B.L. Sta. 0+920.415, 4.5 m Rt.
Open Cut and Install 34 linear meters of
Precast 2.1 x 1.2 m RCB (Cooper E-80
Loading) under existing railroad crossing.
Contractor to contact:
Ron Preuss, Rail Master @ (316) 263-3240
of the Central Kansas Railway
a Minimum of 7 (seven) days PRIOR TO
RCB WORK at this location.

CAUTION!
203mm Abandoned
Sanitary Sewer As
Per City Records
CROSSING

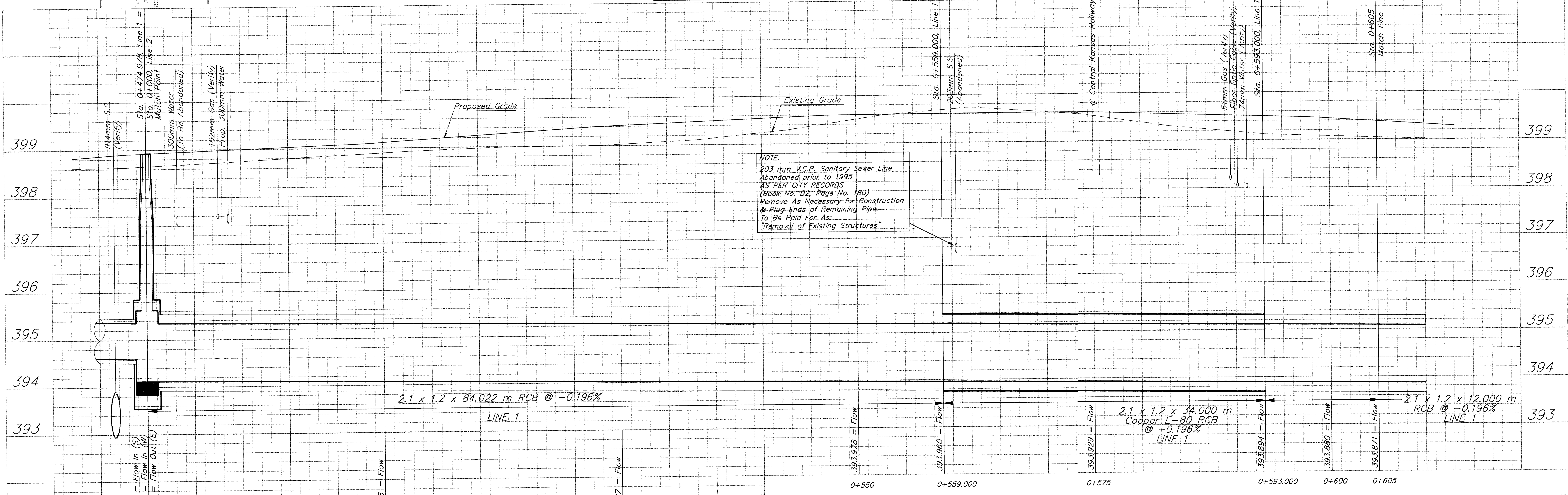
Precast 2.1 x 1.2 m RCB (Cooper E-80 Loading)
shall be **SUBSIDIARY** to the Bid Item "Reinforced
Concrete Box (2.1 x 1.2 m) (Precast)"

CAUTION!
51mm Gas
Fiber Optic
74mm Water
CROSSING

Railroad Crossing To Be Removed
and Reinstall By "Others".

CAUTION!
Existing 203mm
Water Line
Parallel to RCB
(1.9m Rt @ to @)

Fiber Optic Cable to be
Adjusted "by Others" if
Required during Construction.
Contractor to contact:
AT&T Fiber Optic @
1-800-252-1133



NOTE:
203 mm V.C.P. Sanitary Sewer Line
Abandoned prior to 1995
AS PER CITY RECORDS
(Book No. B2, Page No. 180)
Remove As Necessary for Construction
& Plug Ends of Remaining Pipe.
To Be Paid For As:
"Removal of Existing Structures"

PROJECT NUMBER 472 - 82906			
DESIGN STAFF	DRAWN STAFF	APPROVED JFB	DATE NOV 98
		SCALE NOTED	

RCB STORM SEWER - LINE 1
B.L. Sta. 0+802.393 to B.L. Sta. 0+932.415
CENTRAL AVENUE - PHASE 1 - WEST ST TO MCLEAN