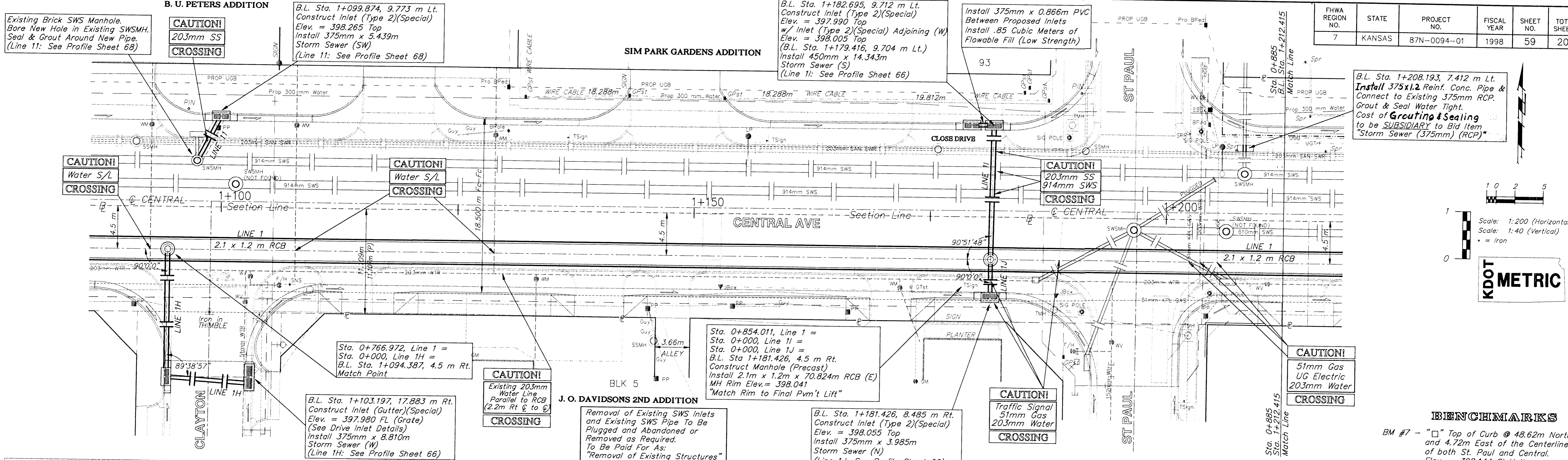
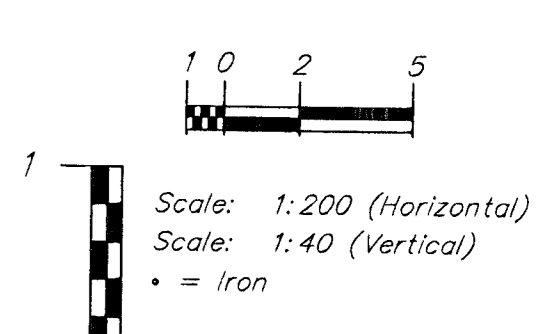


FHWA REGION NO.	STATE	PROJECT NO.	FISCAL YEAR	SHEET NO.	TOTAL SHEETS
7	KANSAS	87N-0094-01	1998	59	202

Existing Brick SWS Manhole. Bore New Hole in Existing SWSMH. Seal & Grout Around New Pipe. (Line 11: See Profile Sheet 68)



B.L. Sta. 1+208.193, 7.412 m Lt. Install 375x1.2 Reinf. Conc. Pipe & Connect to Existing 375mm RCP. Grout & Seal Water Tight. Cost of Grouting & Sealing to be SUBSIDIARY to Bid Item "Storm Sewer (375mm) (RCP)".



Scale: 1:200 (Horizontal)
Scale: 1:40 (Vertical)
• = Iron

DOT METRIC

BENCHMARKS
BM #7 - "□" Top of Curb @ 48.62m North and 4.72m East of the Centerline of both St. Paul and Central. Elev. = 398.144 SI Units (1306.23 MSL Datum)

