

BENCHMARKS

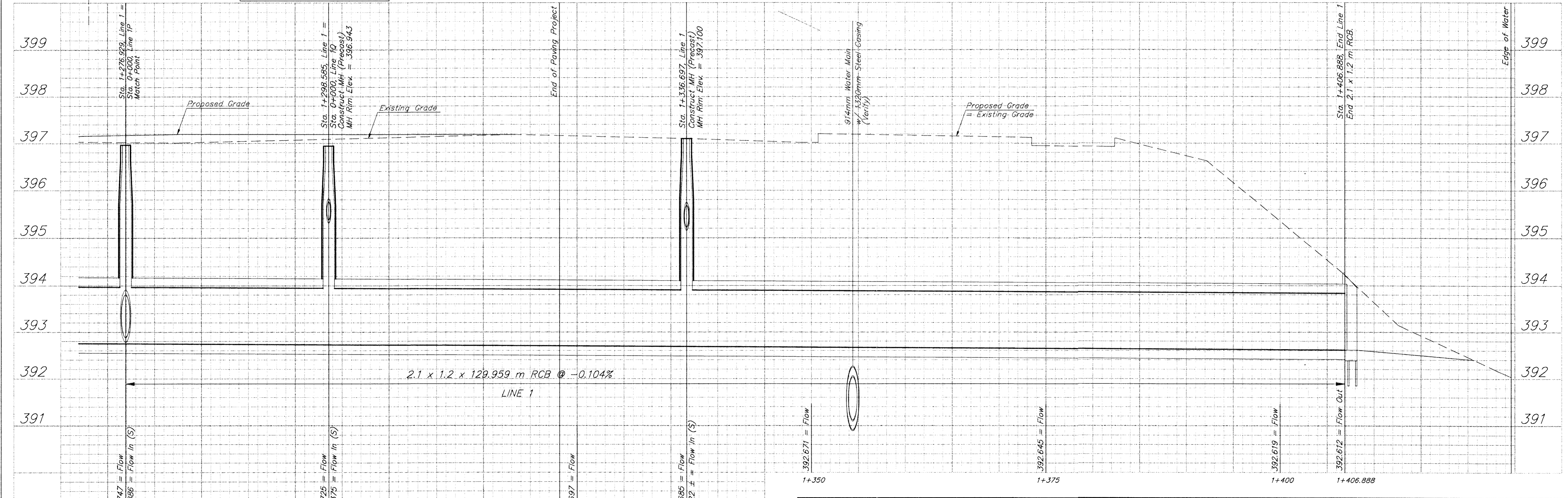
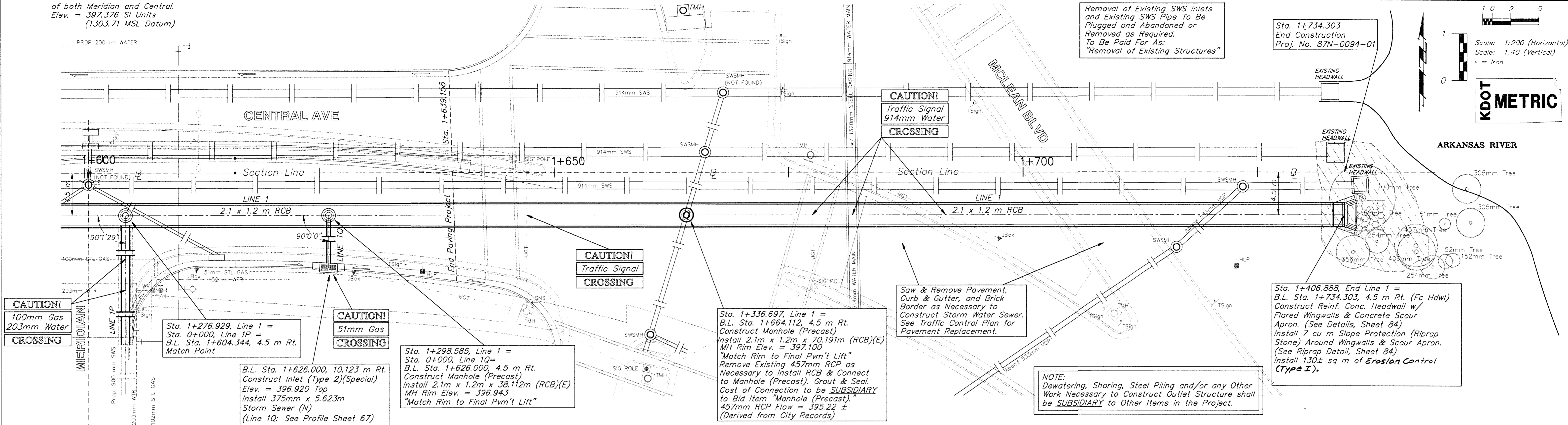
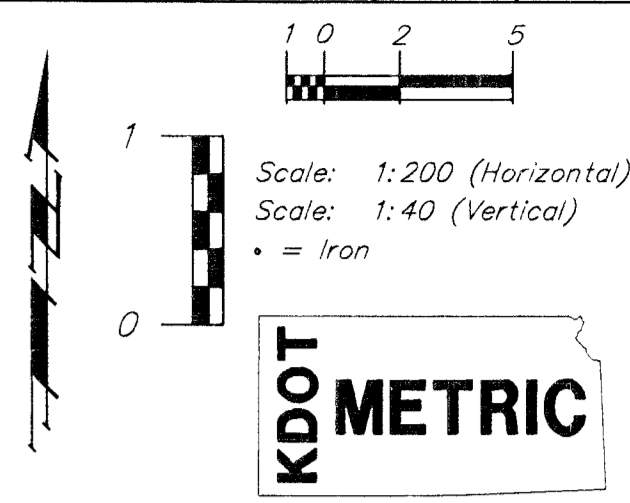
BM #9 - City Disc Located @ 12.89m South and 10.91m West of the Centerline of both Meridian and Central. Elev. = 397.376 SI Units (1303.71 MSL Datum)

NOTE: Intersection Pavement Removed During RCB Construction Other Than Temporary Surfacing Material to be Reconstructed with Companion Project.

| FHWA REGION NO. | STATE | PROJECT NO. | FISCAL YEAR | SHEET NO. | TOTAL SHEETS |
|-----------------|--------|-------------|-------------|-----------|--------------|
| 7 | KANSAS | 87N-0094-01 | 1998 | 64 | 202 |

Removal of Existing SWS Inlets and Existing SWS Pipe To Be Plugged and Abandoned or Removed as Required. To Be Paid For As: "Removal of Existing Structures"

Sta. 1+734.303 End Construction Proj. No. 87N-0094-01



CAUTION!
100mm Gas
203mm Water
CROSSING

Sta. 1+276.929, Line 1 =
Sta. 0+000, Line 1P =
B.L. Sta. 1+604.344, 4.5 m Rt.
Match Point

CAUTION!
51mm Gas
CROSSING

B.L. Sta. 1+626.000, 10.123 m Rt.
Construct Inlet (Type 2)(Special)
Elev. = 396.920 Top
Install 375mm x 5.623m
Storm Sewer (N)
(Line 1Q: See Profile Sheet 67)

Sta. 1+298.585, Line 1 =
Sta. 0+000, Line 1Q =
B.L. Sta. 1+626.000, 4.5 m Rt.
Construct Manhole (Precast)
Install 2.1m x 1.2m x 38.112m (RCB)(E)
MH Rim Elev. = 396.943
"Match Rim to Final Pvm't Lift"

Sta. 1+336.697, Line 1 =
B.L. Sta. 1+664.112, 4.5 m Rt.
Construct Manhole (Precast)
Install 2.1m x 1.2m x 70.191m (RCB)(E)
MH Rim Elev. = 397.100
"Match Rim to Final Pvm't Lift"
Remove Existing 457mm RCP as
Necessary to Install RCB & Connect
to Manhole (Precast). Grout & Seal.
Cost of Connection to be **SUBSIDIARY**
to Bid Item "Manhole (Precast)".
457mm RCP Flow = 395.22 ±
(Derived from City Records)

Saw & Remove Pavement,
Curb & Gutter, and Brick
Border as Necessary to
Construct Storm Water Sewer.
See Traffic Control Plan for
Pavement Replacement.

NOTE:
Dewatering, Shoring, Steel Piling and/or any Other
Work Necessary to Construct Outlet Structure shall
be **SUBSIDIARY** to Other Items in the Project.

Sta. 1+406.888, End Line 1 =
B.L. Sta. 1+734.303, 4.5 m Rt. (Fc Hdw)
Construct Reinf. Conc. Headwall w/
Flared Wingwalls & Concrete Scour
Apron. (See Details, Sheet 84)
Install 7 cu m Slope Protection (Riprap
Stone) Around Wingwalls & Scour Apron.
(See Riprap Detail, Sheet 84)
Install 130± sq m of Erosion Control
(Type I).

| | | | | |
|--------------------------------------|-------------|--------------|-------------|-------------|
| PROJECT NUMBER 472 - 82906 | | | | |
| DESIGN STAFF | DRAWN STAFF | APPROVED JFB | DATE NOV 98 | SCALE NOTED |

RCB STORM SEWER - LINE 1
B.L. Sta. 1+406.344 to B.L. Sta. 1+734.303
CENTRAL AVENUE - PHASE 1 - WEST ST TO MCLEAN

BAUGHMAN COMPANY P.A.
ENGINEERING, SURVEYING, & PLANNING
316-292-7271 • 316 ELLIS • WICHITA, KANSAS 97211