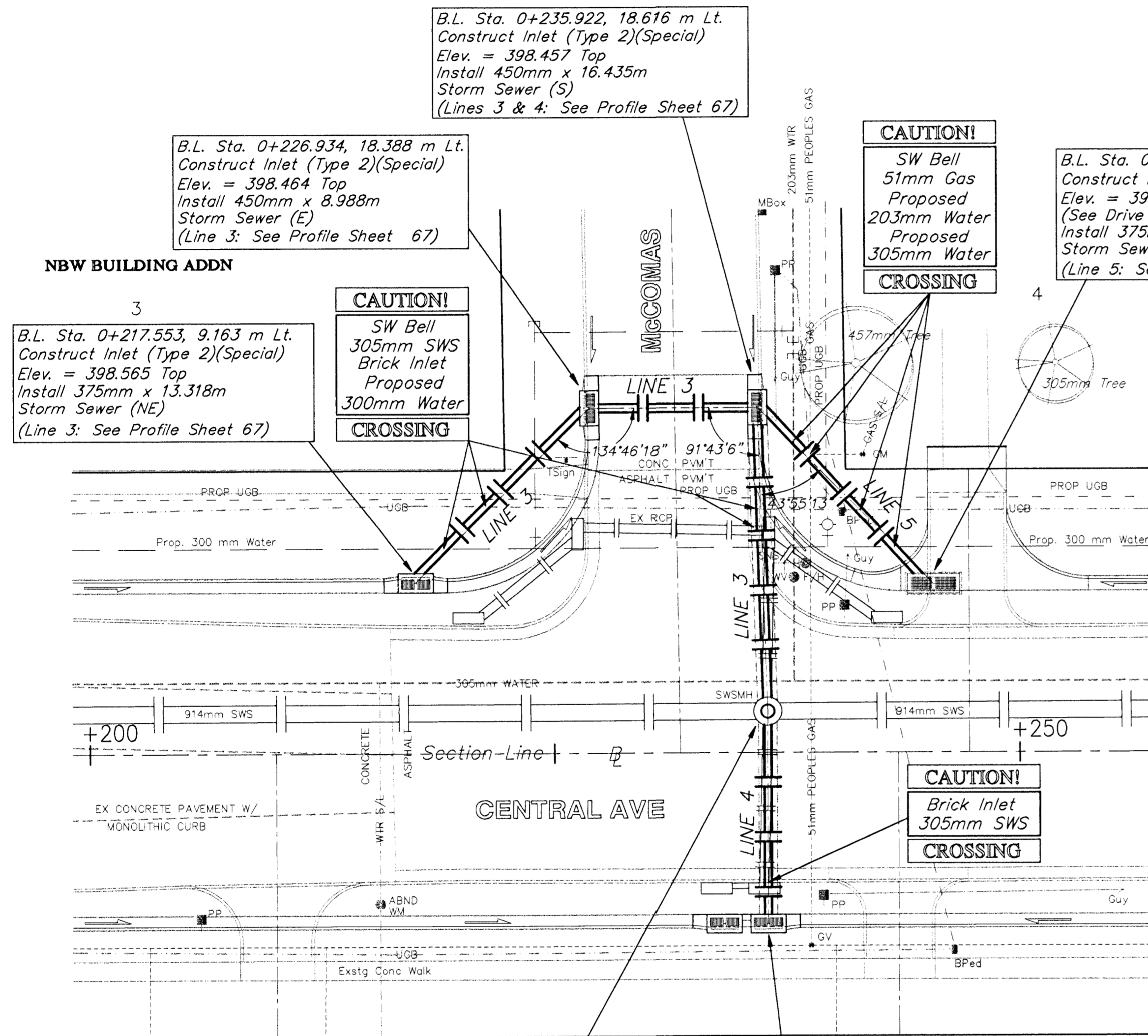
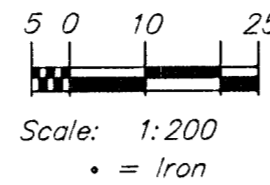


BENCHMARKS

BM #2 - "□" Top of Curb @ 4.72m West and 27.83m North of the Centerline of both Central and Kessler. Elev. = 398.546 SI Units (1307.55 MSL Datum)



B.L. Sta. 0+235.922, 18.616 m Lt.
Construct Inlet (Type 2)(Special)
Elev. = 398.457 Top
Install 450mm x 16.435m Storm Sewer (S)
(Lines 3 & 4: See Profile Sheet 67)

B.L. Sta. 0+226.934, 18.388 m Lt.
Construct Inlet (Type 2)(Special)
Elev. = 398.464 Top
Install 450mm x 8.988m Storm Sewer (E)
(Line 3: See Profile Sheet 67)

NBW BUILDING ADDN

B.L. Sta. 0+217.553, 9.163 m Lt.
Construct Inlet (Type 2)(Special)
Elev. = 398.565 Top
Install 375mm x 13.318m Storm Sewer (NE)
(Line 3: See Profile Sheet 67)

CAUTION!
SW Bell
305mm SWS
Brick Inlet
Proposed
300mm Water
CROSSING

CAUTION!
SW Bell
51mm Gas
Proposed
203mm Water
Proposed
305mm Water
CROSSING

B.L. Sta. 0+245.370, 9.031 m Lt.
Construct Inlet (Gutter)(Special)
Elev. = 398.390 FL (Grate)
(See Drive Inlet Details)
Install 375mm x 13.459m Storm Sewer (NW)
(Line 5: See Profile Sheet 68)

CAUTION!
Brick Inlet
305mm SWS
CROSSING

Lot 1, Blk A
dePAUL ADDITION

Existing Brick SWS Manhole.
Bore New Hole in Existing SWSMH.
Seal & Grout Around New Pipe.
(Lines 3 & 4: See Profile Sheet 67)

INSTALL 375mm x 0.866 m PVC BETWEEN PROPOSED INLETS
INSTALL 0.85 m³ OF FLOWABLE FILL (LOW STRENGTH)

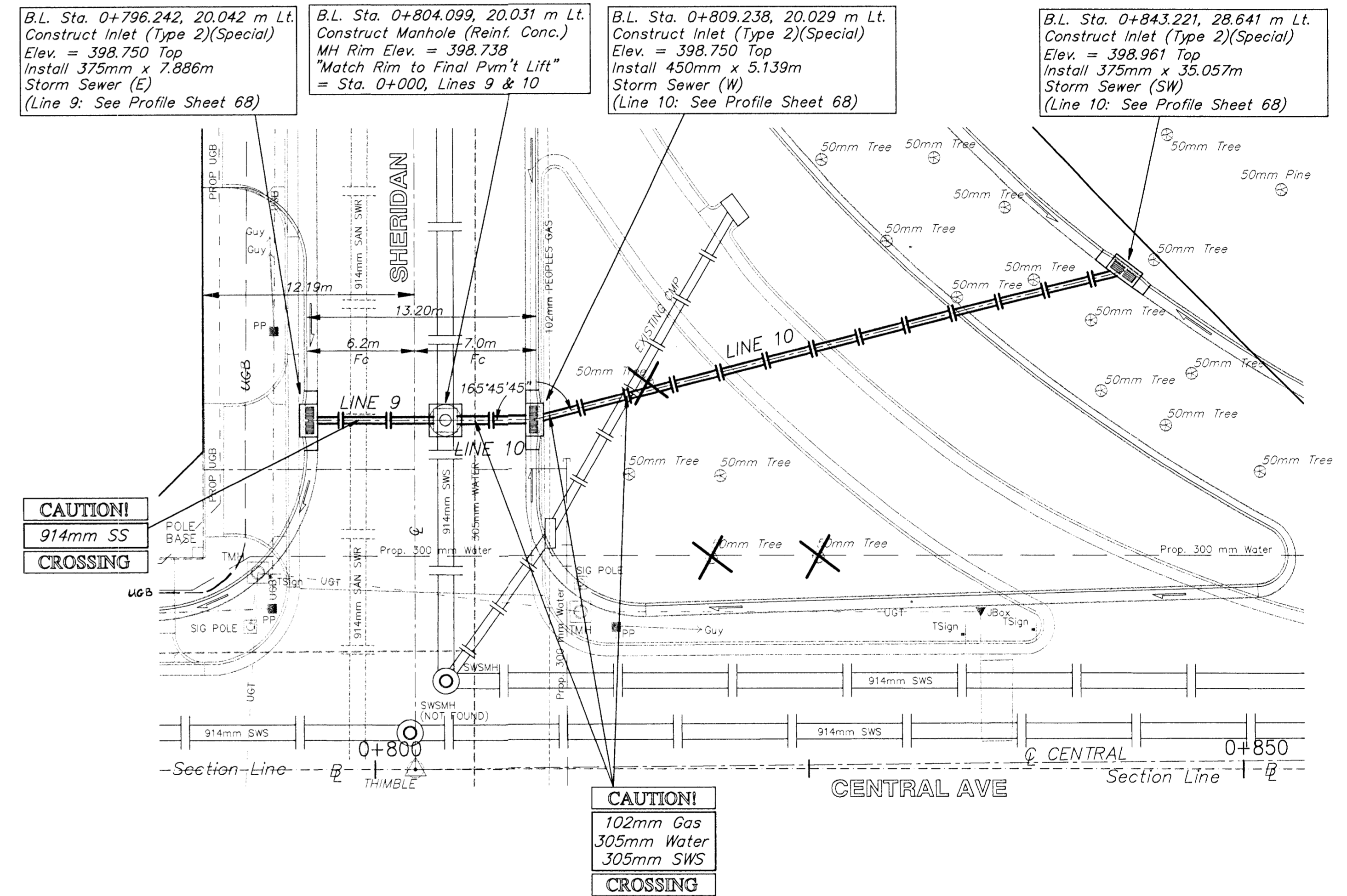
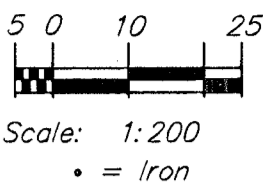
B.L. Sta. 0+236.413, 9.163 m Rt.
Construct Inlet (Type 2)(Special)
Elev. = 398.420 Top
w/ Inlet (Type 2)(Special) Adjoining (W)
Elev. = 398.420 Top
(B.L. Sta. 0+234.047 9.163 m Rt.)
Install 450mm x 11.351m Storm Sewer (S)
(Line 4: See Profile Sheet 67)

Removal of Existing SWS Inlets and Existing SWS Pipe To Be Plugged and Abandoned or Removed as Required.
To Be Paid For As:
"Removal of Existing Structures"



BENCHMARKS

BM #5 - City Disc Located @ 9.14m South and 12.8m East of the Centerline of both Sheridan and Central. Elev. = 399.012 SI Units (1309.08 MSL Datum)



B.L. Sta. 0+796.242, 20.042 m Lt.
Construct Inlet (Type 2)(Special)
Elev. = 398.750 Top
Install 375mm x 7.886m Storm Sewer (E)
(Line 9: See Profile Sheet 68)

B.L. Sta. 0+804.099, 20.031 m Lt.
Construct Manhole (Reinf. Conc.)
MH Rim Elev. = 398.738
"Match Rim to Final Pvm't Lift"
= Sta. 0+000, Lines 9 & 10

B.L. Sta. 0+809.238, 20.029 m Lt.
Construct Inlet (Type 2)(Special)
Elev. = 398.750 Top
Install 450mm x 5.139m Storm Sewer (W)
(Line 10: See Profile Sheet 68)

B.L. Sta. 0+843.221, 28.641 m Lt.
Construct Inlet (Type 2)(Special)
Elev. = 398.961 Top
Install 375mm x 35.057m Storm Sewer (SW)
(Line 10: See Profile Sheet 68)

CAUTION!
914mm SS
CROSSING

CAUTION!
102mm Gas
305mm Water
305mm SWS
CROSSING

Removal of Existing SWS Inlets and Existing SWS Pipe To Be Plugged and Abandoned or Removed as Required.
To Be Paid For As:
"Removal of Existing Structures"

