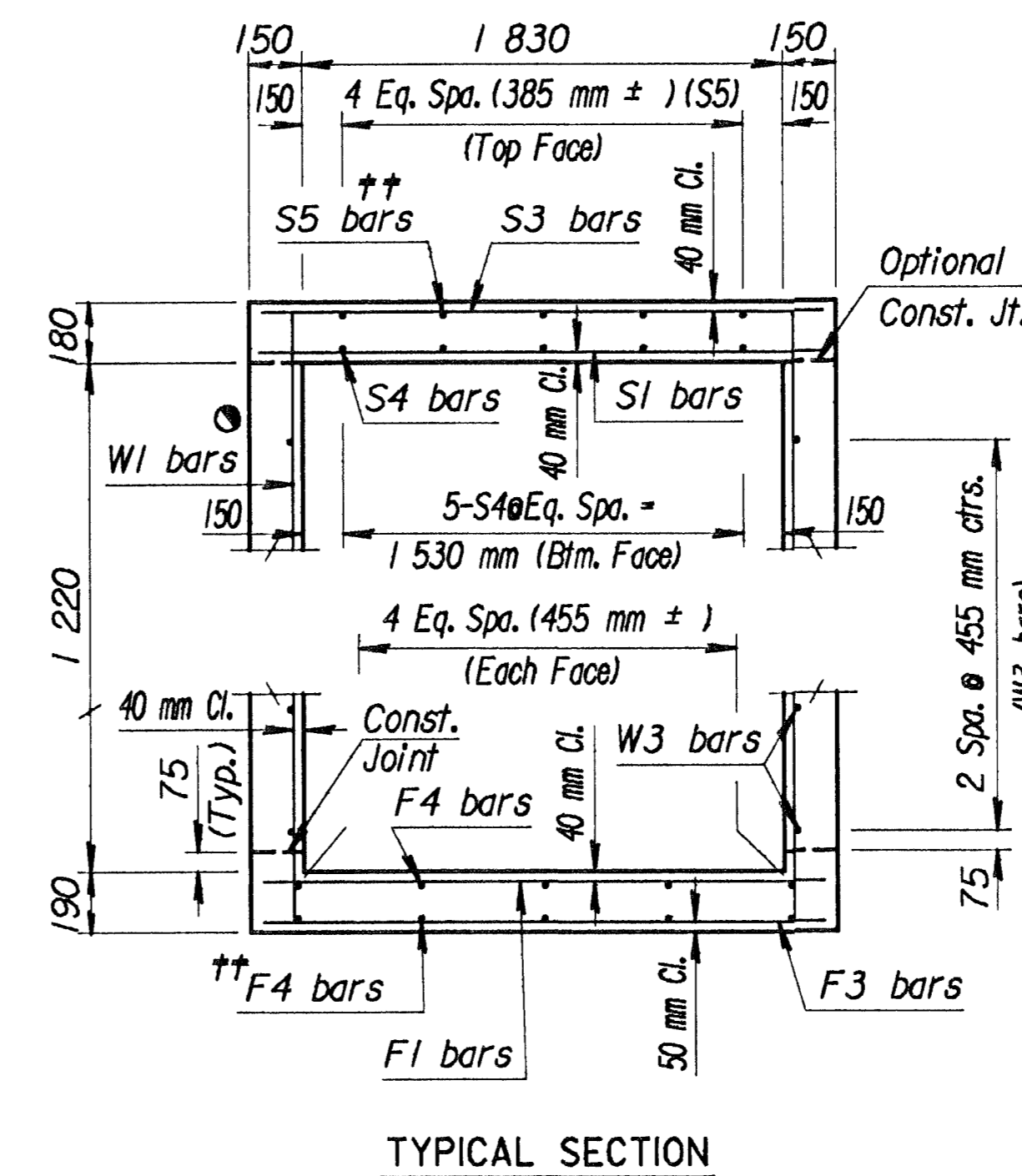
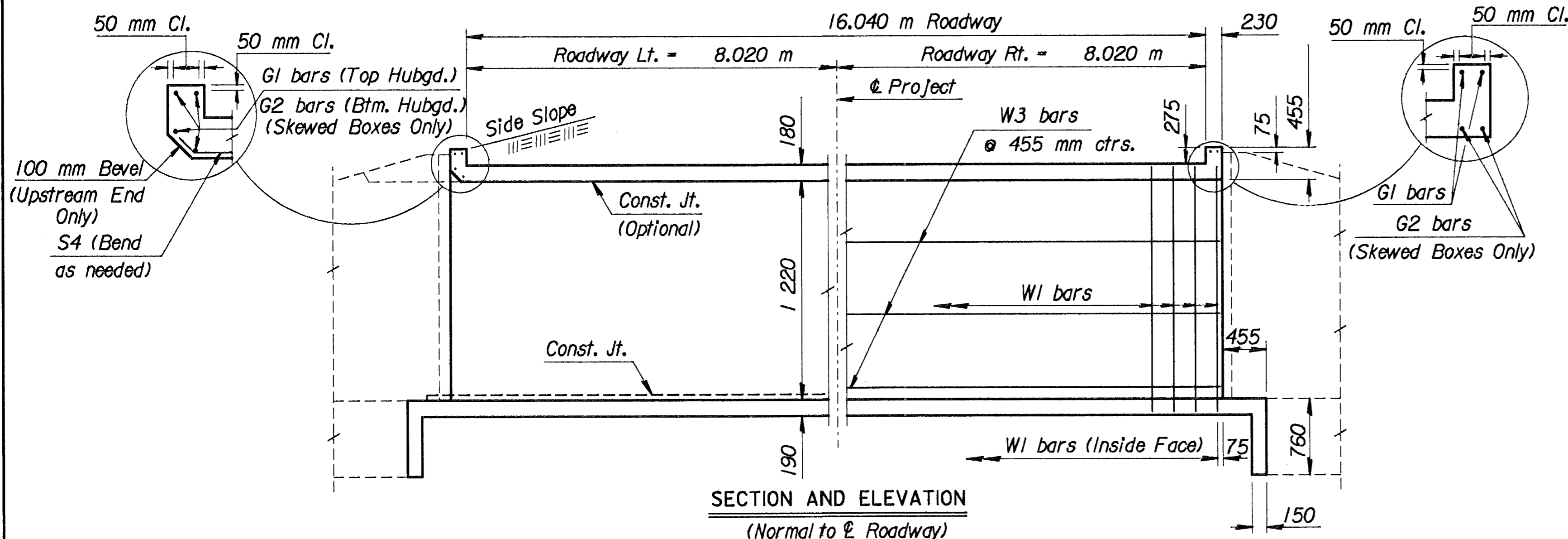


VERSION: 5.1.0m COMPILED: 03/01/95

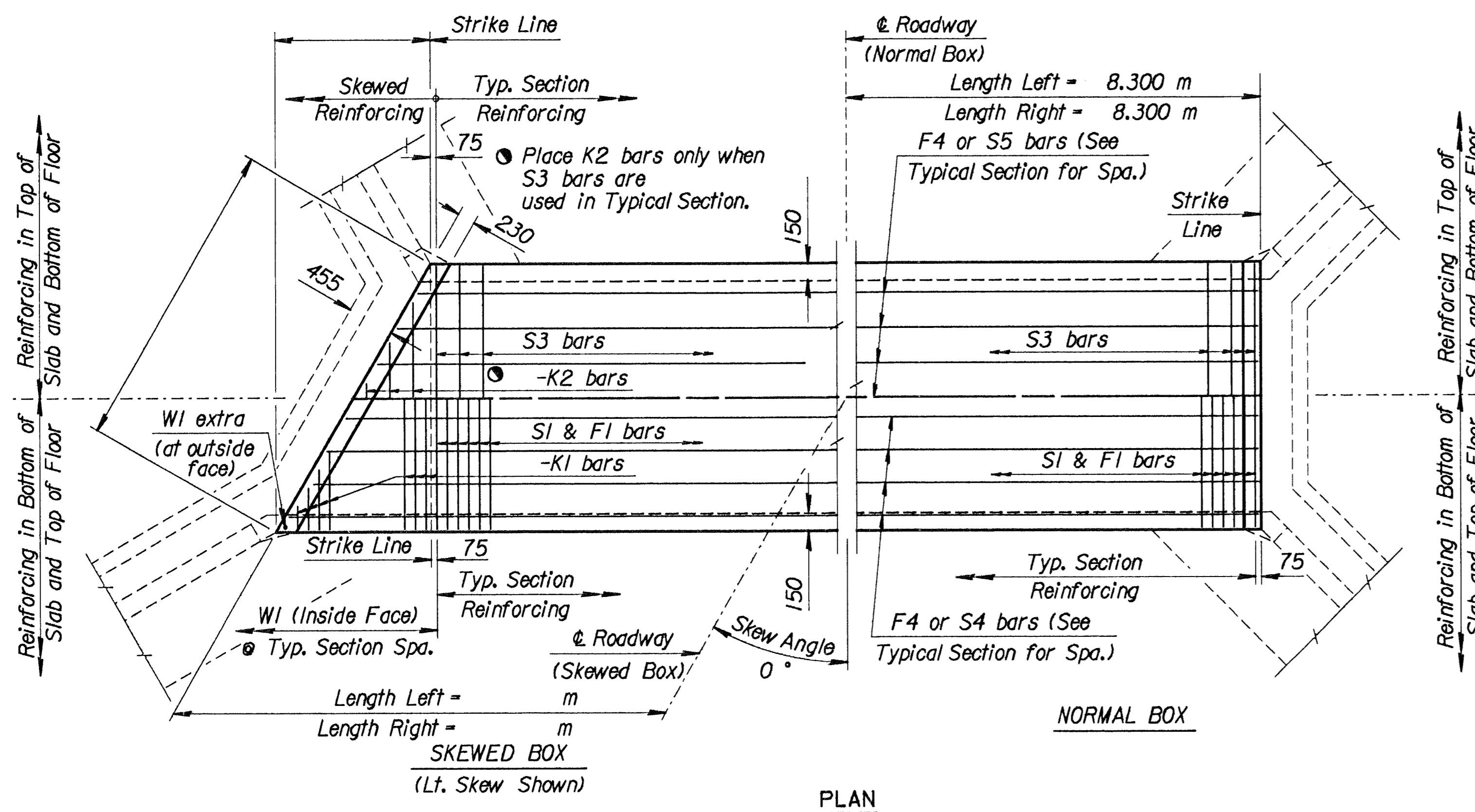
DESIGN	DATE	DATE	DATE	DATE
DETAIL	DATE	DATE	DATE	DATE
QUANTITIES	DATE	DATE	DATE	DATE
REVISIONS	DATE	DATE	DATE	DATE

proj /usr2/proj/.../net.dgn
23-JAN-1998 11:02 View=



FHWA REGION NO.	STATE	PROJECT NO.	YEAR	SHEET NO.	TOTAL SHEETS
7	KANSAS	87N-0094-01	1998	79	202

See RCB Auxillary Details for Optional Splice.
 Note: S3 bars omitted unless grade box or slab thickness is greater than or equal to 305 mm.
 Note: F3 bars omitted unless floor thickness is greater than or equal to 305 mm.
 †† Omit S5 bars when S3 bars are omitted and omit the bottom layer of F4 bars when F3 bars are omitted.



GENERAL NOTES

DESIGN SPECIFICATION: AASHTO Specifications, 1983 Edition
DESIGN LOADING: MS18-44
UNIT STRESSES: Class AAA Concrete $f'_c = 28$ MPa
 Reinforcing Steel $f_y = 420$ MPa
FILL HEIGHT: Unless otherwise noted, the Design Fill Height is measured from the riding surface at the culvert and includes the surfacing.
CONCRETE: Use concrete conforming to Class AAA Concrete. Bevel all exposed edges with a 20 mm triangular molding. Where Class AAA(AE) is specified, place this concrete in the top slab above the Construction Joint.
REINFORCING: Use reinforcing steel conforming to ASTM A615M, Grade 420. All dimensions relative to reinforcing steel are to the centerline of the bar unless otherwise noted.
EXCAVATION: Excavation for culverts less than bridge length shall not be paid for directly but shall be subsidiary to Class AAA Concrete. Excavation for RCB bridges shall be paid for as Class III Excavation.
SEAL COURSE: The Engineer may require a seal course. The seal course shall be unreinforced Concrete (Commercial Grade) with a minimum depth of 75 mm or as determined by the Engineer. Concrete for the seal course shall be paid for at the unit price set for Concrete for Seal Course.
FOUNDATION STABILIZATION: The Engineer may require Foundation Stabilization. The Engineer shall determine the depth of Foundation Stabilization. Foundation Stabilization shall be paid for at the unit price set for Foundation Stabilization. See the "Auxiliary Details" sheet.
QUANTITIES: The quantities shown in the Culvert Summary include apron and/or soil saver quantities when they are required by the plans. Payment for additional quantities that result from including a seal course and/or a floating apron, as a change in the original plans, shall be made at the unit price bid for the various items involved.
GRANULAR BACKFILL (WINGWALLS): The Engineer may require special backfill procedures. See the "Auxiliary Details" sheet.
STRIKE LINE: Construct the wingwalls and that portion of the RCB outside the Strike Line level. Construct the wingwall footings with the culvert floor. See the wingwall detail sheets.

Minimum Splice Lengths	
#12	405
#15	510
#20	610

SUMMARY OF QUANTITIES	
Class AAA Concrete	19.4 m ³
Class AAA Concrete (AE)	0.0 m ³
Reinforcing Steel (Gr. 420)	1260 kg
Reinforcing Steel (Epoxy Coated)	0 kg
Class III Excavation	m ³
Foundation Stabilization (Set)	1 m ³
Concrete for Seal Course (Set)	1 m ³
Granular Backfill (Wingwalls) (Set)	1 m ³

CULVERT SUMMARY															
Flow Line Elev. Lt. (m)	Flow Line Elev. Rt. (m)	Crown Gr. Elev. (m)	Design Fill Ht. (m)	Skew	Left Wings	Right Wings	Scour Apron	Soil Saver	Granular Backfill	Concrete			Reinf. Steel (Gr. 420)		
										Barrel (m ³)	Wings (m ³)	Total (m ³)	Barrel (kg)	Wings (kg)	Total (kg)
394.145	394.125	399.055	4.6	0	NONE	NONE	NO	NO	NO	19.4		19.4	1259		1259

BAR SCHEDULE																													
F1				F3				F4				S1				S3				S4				S5					
Size	Spa.	No.	Length	Size	Spa.	No.	Length	Size	Spa.	No.	Length	Size	Spa.	No.	Length	Size	Spa.	No.	Length	Size	Spa.	No.	Length	Size	Spa.	No.	Length		
15	140	119	2 030	-	-	-	-	12	10	8 460	15	140	119	2 030	-	-	-	-	12	10	8 460	-	-	-	-	-	-	-	-
K1				K2				W1				W3				G1				G2									
Size	Spa.	No.	Length	Size	Spa.	No.	Length	Size	Spa.	No.	Length	Size	Spa.	No.	Length	Size	Spa.	No.	Length	Size	Spa.	No.	Length	Size	Spa.	No.	Length		
-	-	-	-	-	-	-	-	12	230	146	1 500	-	-	-	-	12	12	8 460	-	-	-	-	15	4	2 030	-	-	-	-

NO.	DATE	REVISIONS	BY	APP'D
KANSAS DEPARTMENT OF TRANSPORTATION STA. 0+000 to Sta. 0+016.500 SINGLE 1.8 m x 1.2 m RCB LINE 2				
79		202		
BRI.6.4 SI		SI		SEDGWICK CO.
FHWA APPROVAL	DESIGNED	6-5-91 APP'D	QUANTITIES	KENNETH F. HURST
DESIGN CK.	DETAIL CK.	QUAN. CK.	TRACE CK.	