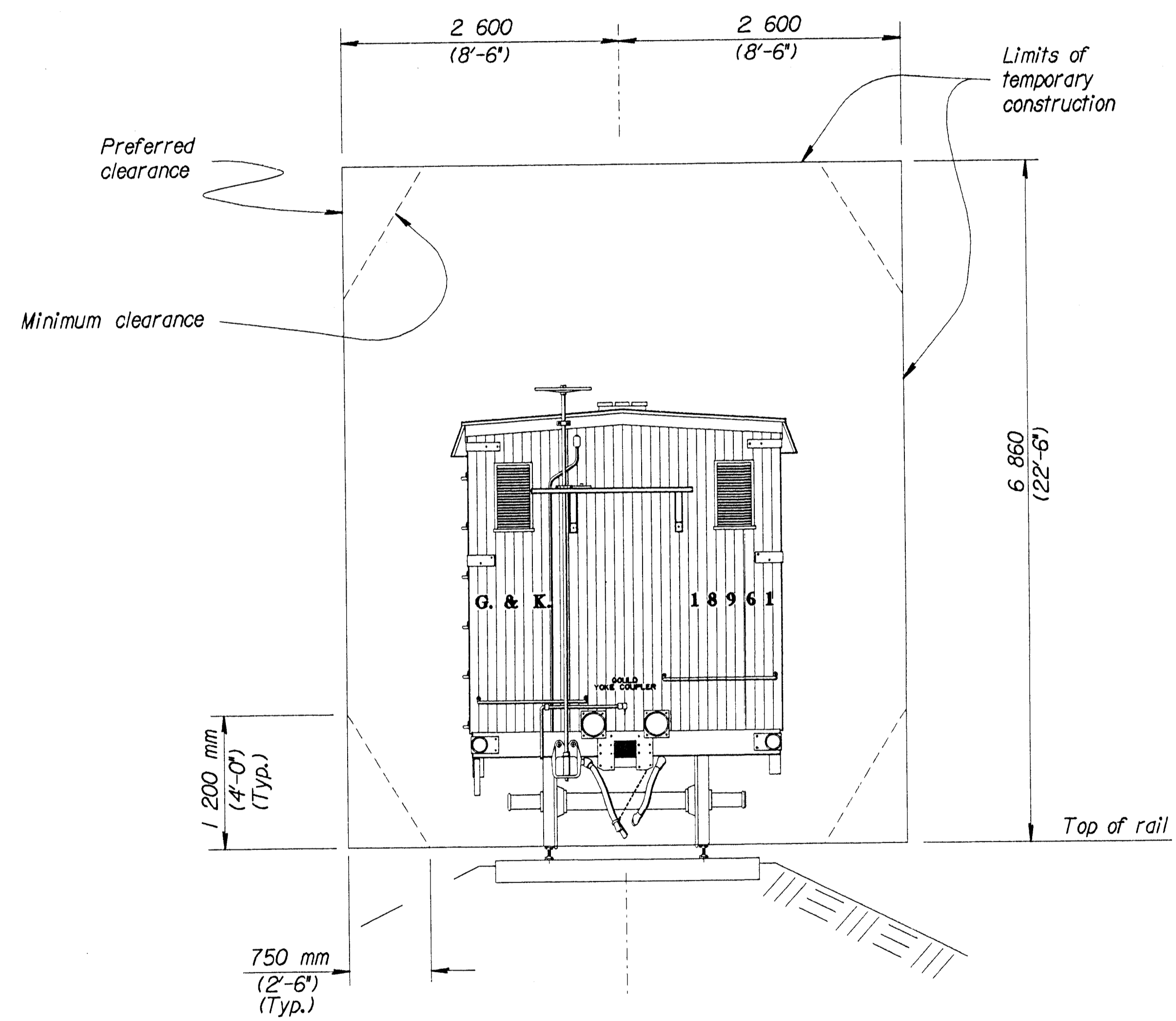


NOTE: Submit seven copies of bracing and shoring details to be used for track protection for approval by the Railroad Company and the Engineer. A registered professional engineer shall design and seal these drawings.

- Design shoring per OSHA requirements
- Design shoring per railroad live load surcharge (Cooper E80) in addition to soil pressure.

**DESIGN GUIDE FOR TRACK SHORING**



**CONSTRUCTION CLEARANCE DETAILS**  
(KCC Minimum Clearances)

NOTE: Minimum clearance dimensions are shown as guidelines. Clearance less than shown may be used, but requires special consideration by the Railroad and/or KDOT.

**RAILROAD PROTECTION:** Execute the work in such a manner and take any precautions necessary to prohibit broken concrete and other debris from falling on and damaging the rails, ties, ballast or other railroad property. As much as possible, do the work so as not to interfere with the normal use of the tracks. The Railroad Company and the Engineer shall approve the methods of protection proposed by the Contractor before any work begins.

Plotted By : simons  
 Plot File : F:\stand\slr\05si.dgn  
 Plot Date : 10-FEB-1998 15:27  
 Std. Base File : /usr2/stand/sr/br/05si.dgn  
 Server File : /usr  
 Server : witch  
 View= PLOT1

3					
2	11-17-97	Revised Sl Vert. Clearance	RAM	KFH	
1	4-4-97	Add US dimensions	LRR	KFH	
NO.	DATE	REVISIONS	BY	APP'D	

**KANSAS DEPARTMENT OF TRANSPORTATION**

Br. No. Sta.

**RAILROAD CLEARANCE AND TRACK PROTECTION**

**83**  
**202**

BRI05 SI Co.

DESIGNED	2-3-98	APP'D	KENNETH F. HURST
DESIGN CK.	DETAIL CK.	LRR QUAN. CK.	CADD CK.