

**GENERAL NOTES**

**UNIT STRESSES:** Class AAA Concrete:  $f_c = 28 \text{ MPa}$  (4000 p.s.i.)  
Reinforcing Steel:  $f_y = 420 \text{ MPa}$  (60,000 p.s.i.)

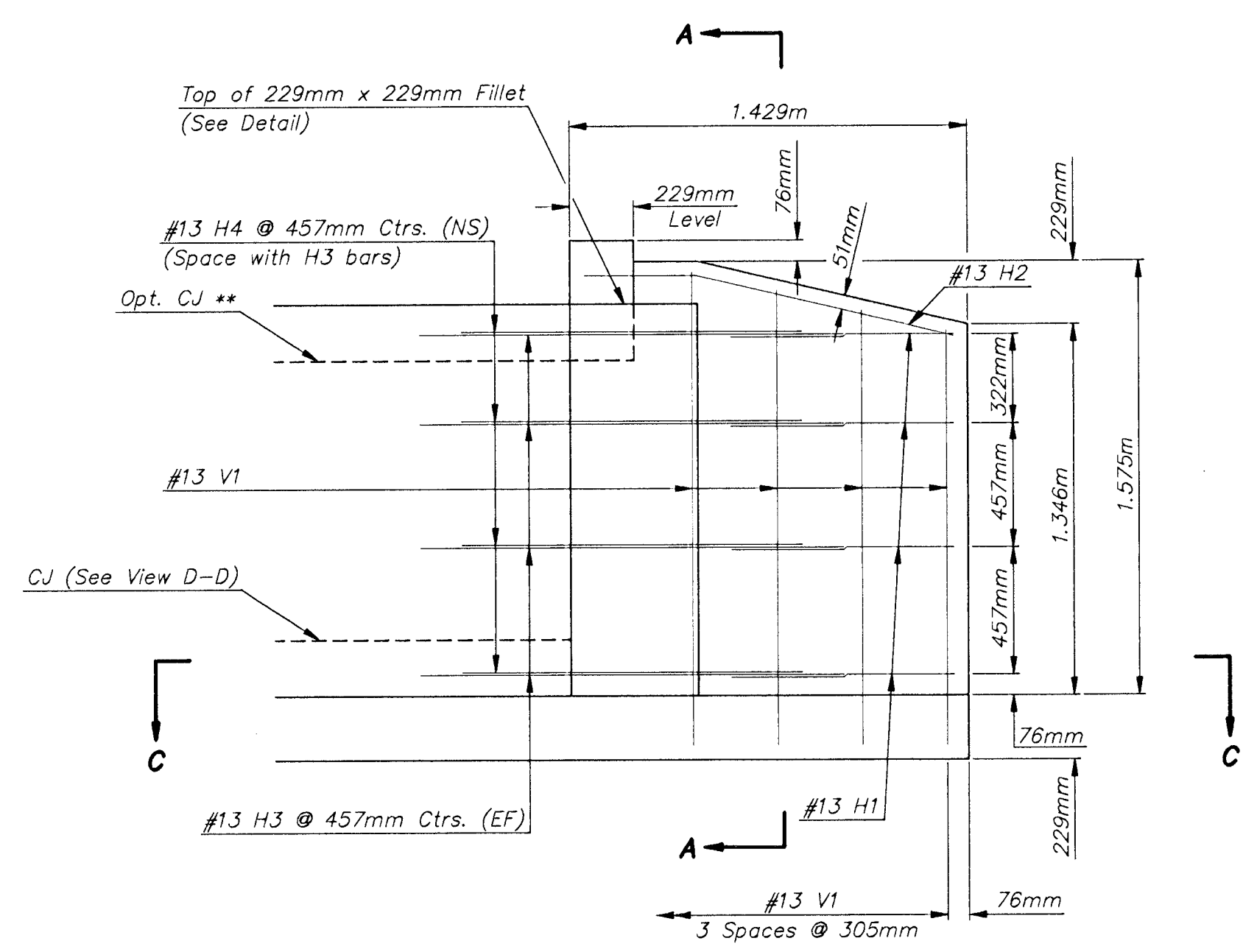
**CONCRETE:** Class AAA Concrete shall be used throughout. Bevel all exposed edges with a 19mm triangular molding.

**REINFORCING:** All reinforcing shall conform to ASTM A615M, Grade 420. Welded Wire Fabric shall conform to ASTM A185M. All dimension relative to reinforcing steel shall be to centerline of bar unless otherwise noted.

**QUANTITIES:** Wingwall Quantities include all quantities outside the neat lines of the box, excluding the hubguard.

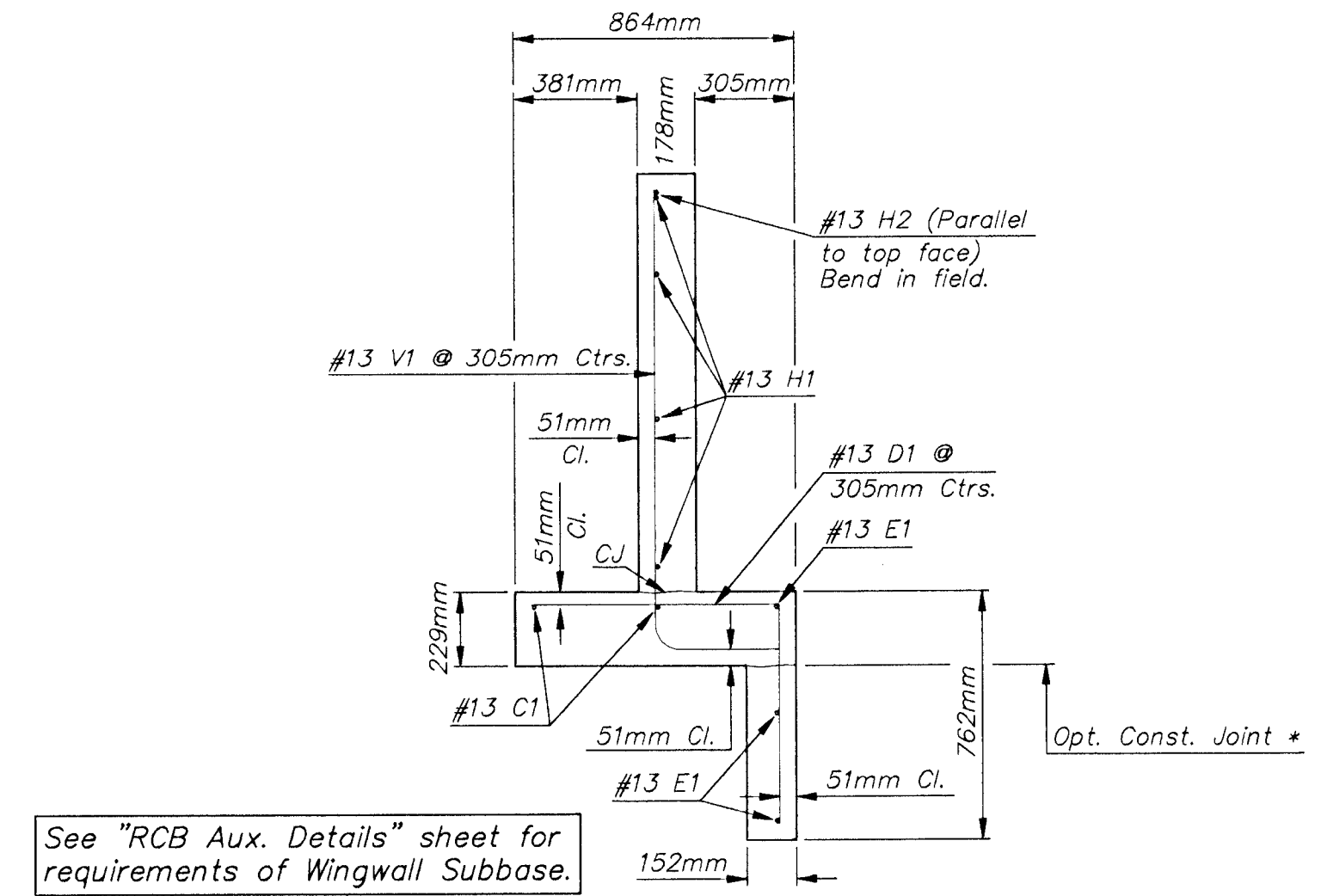
**APRON:** A 127mm concrete slab shall be constructed between the downstream wings in locations subject to scour only when specified on the plans or by the Engineer. Wire reinforcing mesh shall electrically welded and shall be composed of 152 x 152 - MW13 x MW13 welded wire fabric and shall be classified as kilograms of reinforcing steel.

**FOUNDATION AND BACKFILL MATERIAL:** Soils judged as high plasticity clays, fat clays, expansive clays, or organic clays are unsuitable for foundation and/or backfill material for wingwalls and will not be used. Where these conditions exist, Foundation Stabilization and/or Granular Backfill (Wingwalls) shall be used as determined by the Engineer. See "RCB Auxiliary Details" sheet for additional details.



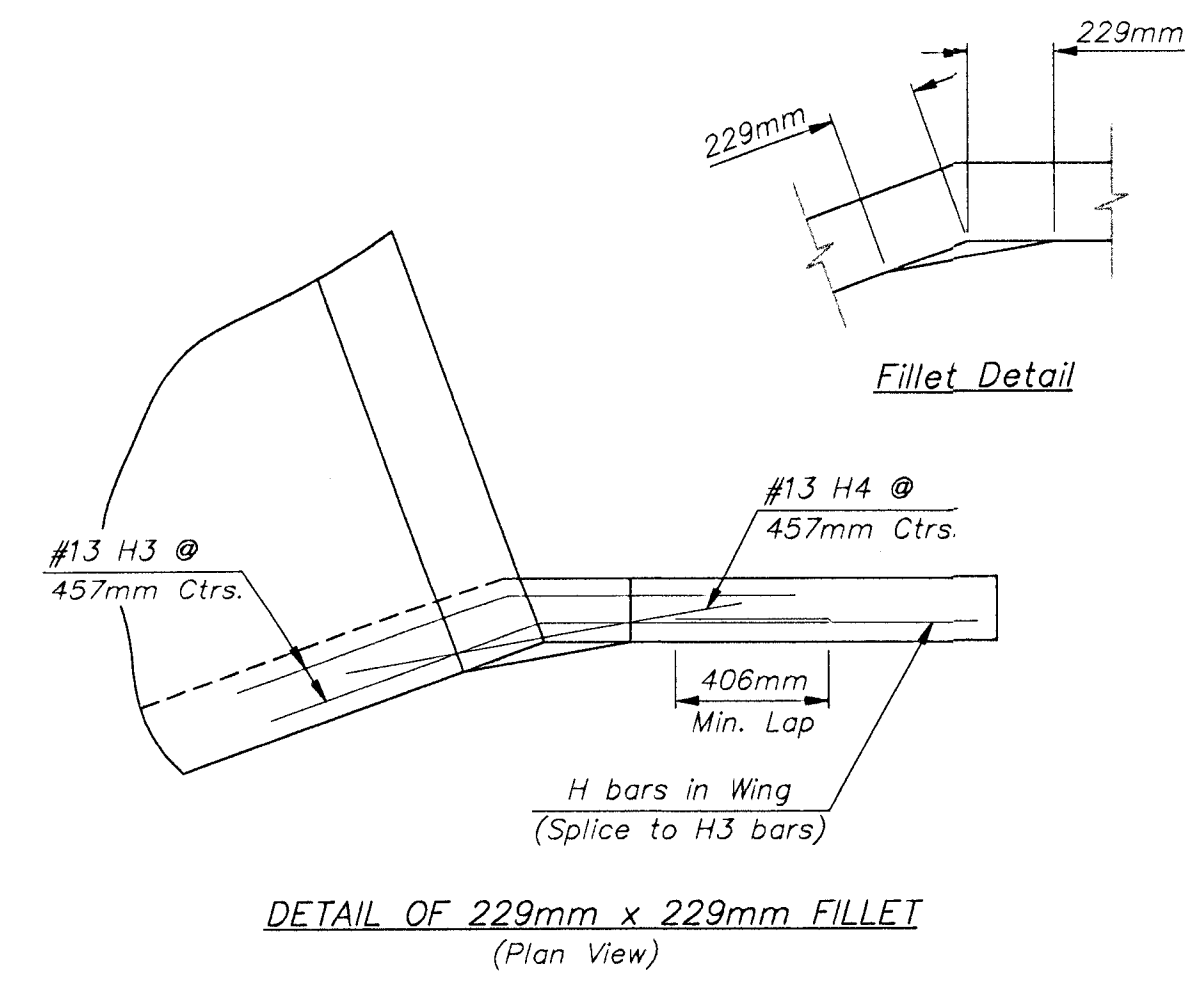
**ELEVATION OF WINGWALL**  
(Backface Shown)

\*\* See RCB Details for location of construction joint.



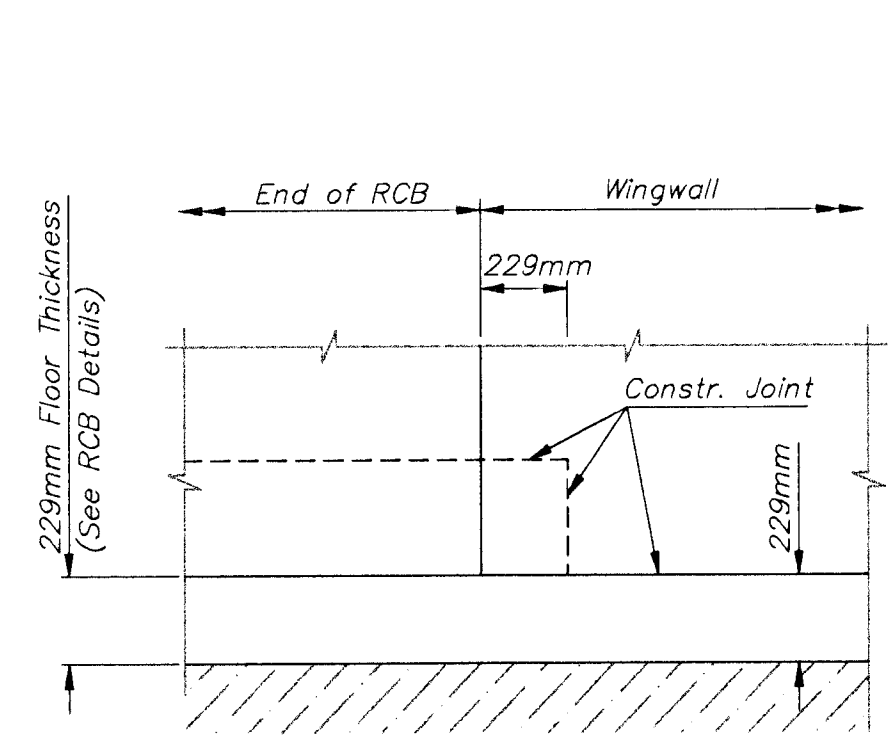
**SECTION A-A**

See "RCB Aux. Details" sheet for requirements of Wingwall Subbase.

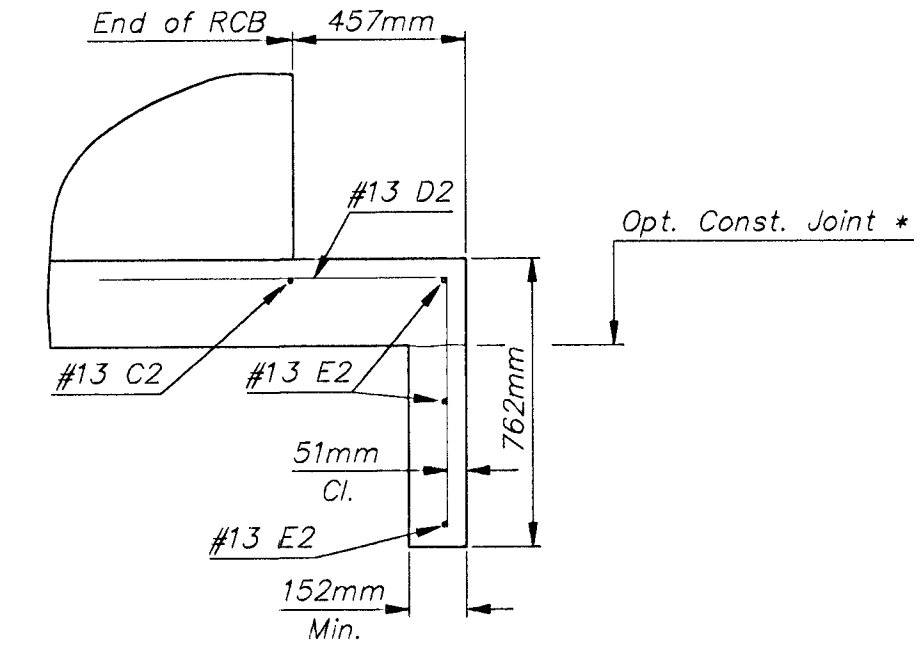


**DETAIL OF 229mm x 229mm FILLET**  
(Plan View)

\* NOTE: Const. Jt. may be used at Contractor's option when approved by the Engineer. D1 bars or mesh may be spliced thus: Minimum overlap shall be 381mm. No increase in quantities of cost shall be allowed when Contractor elects this option.

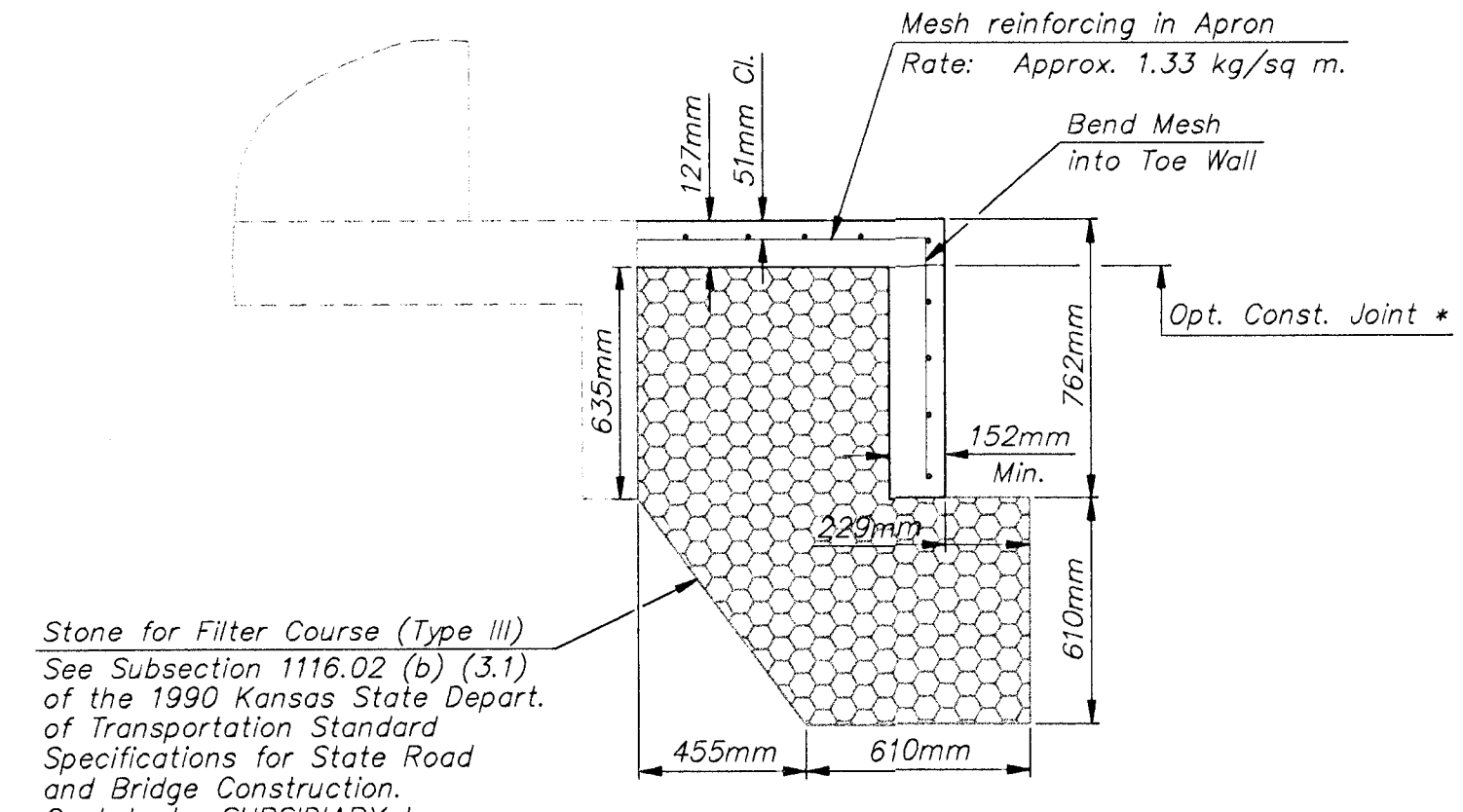


**VIEW D-D**



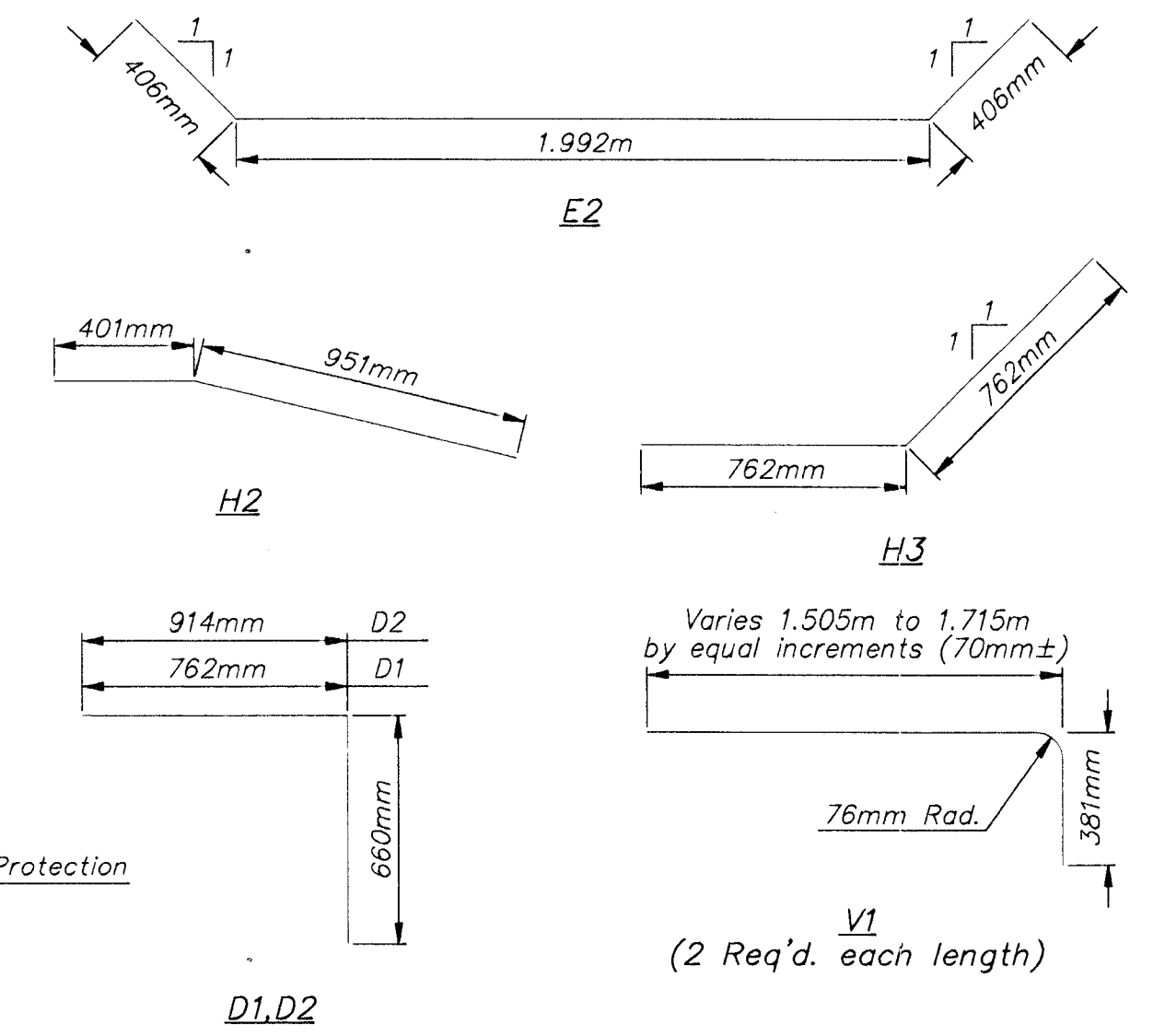
**SECTION E-E**

NOTE:  
EF = Each Face  
NS = Near Side  
FS = Far Side  
CJ = Const. Joint



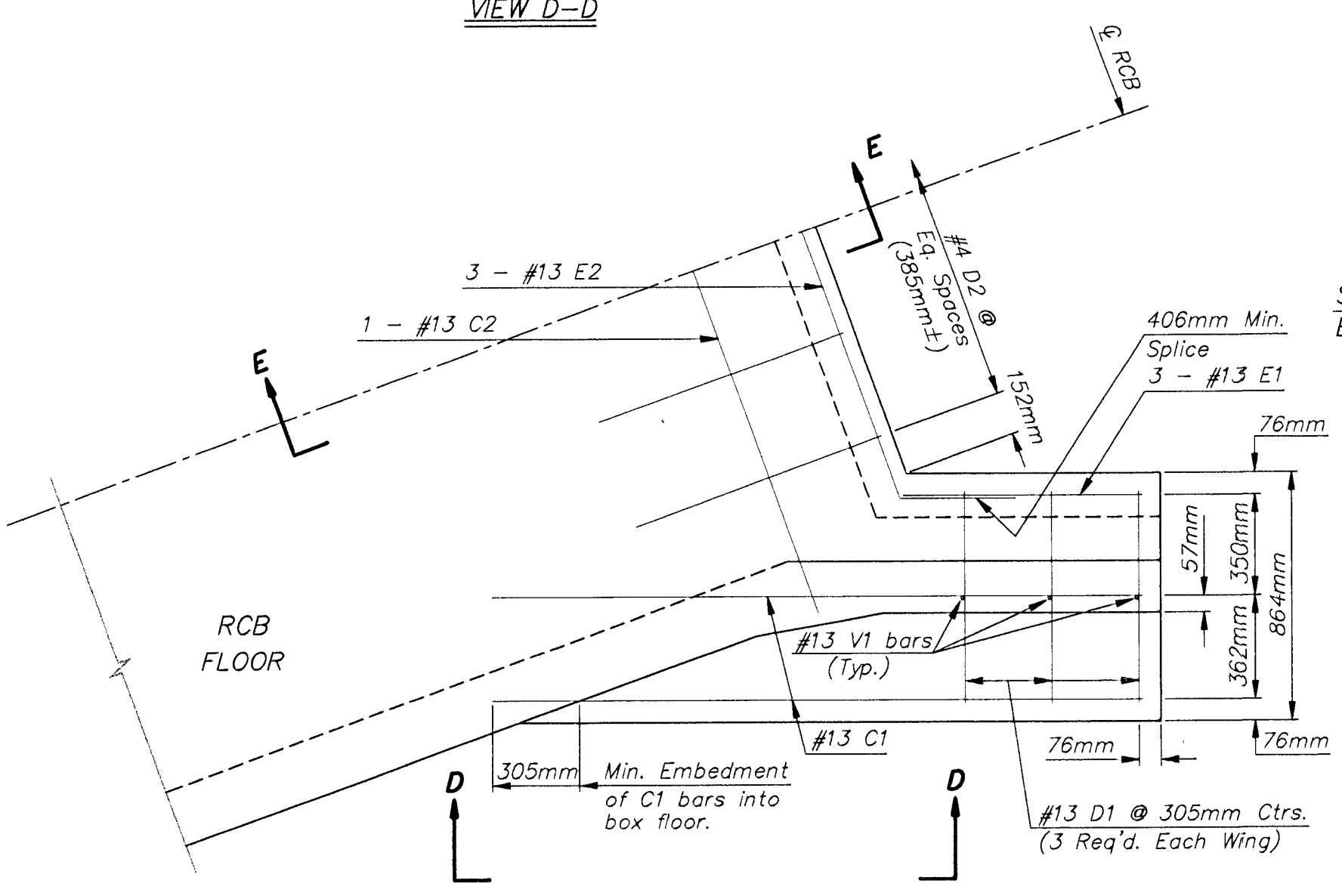
**SECTION B-B**

Stone for Filter Course (Type III)  
See Subsection 1116.02 (b) (3.1) of the 1990 Kansas State Dept. of Transportation Standard Specifications for State Road and Bridge Construction. Cost to be SUBSIDIARY to Slope Protection (Riprap Stone).



**BENDING DIAGRAM**

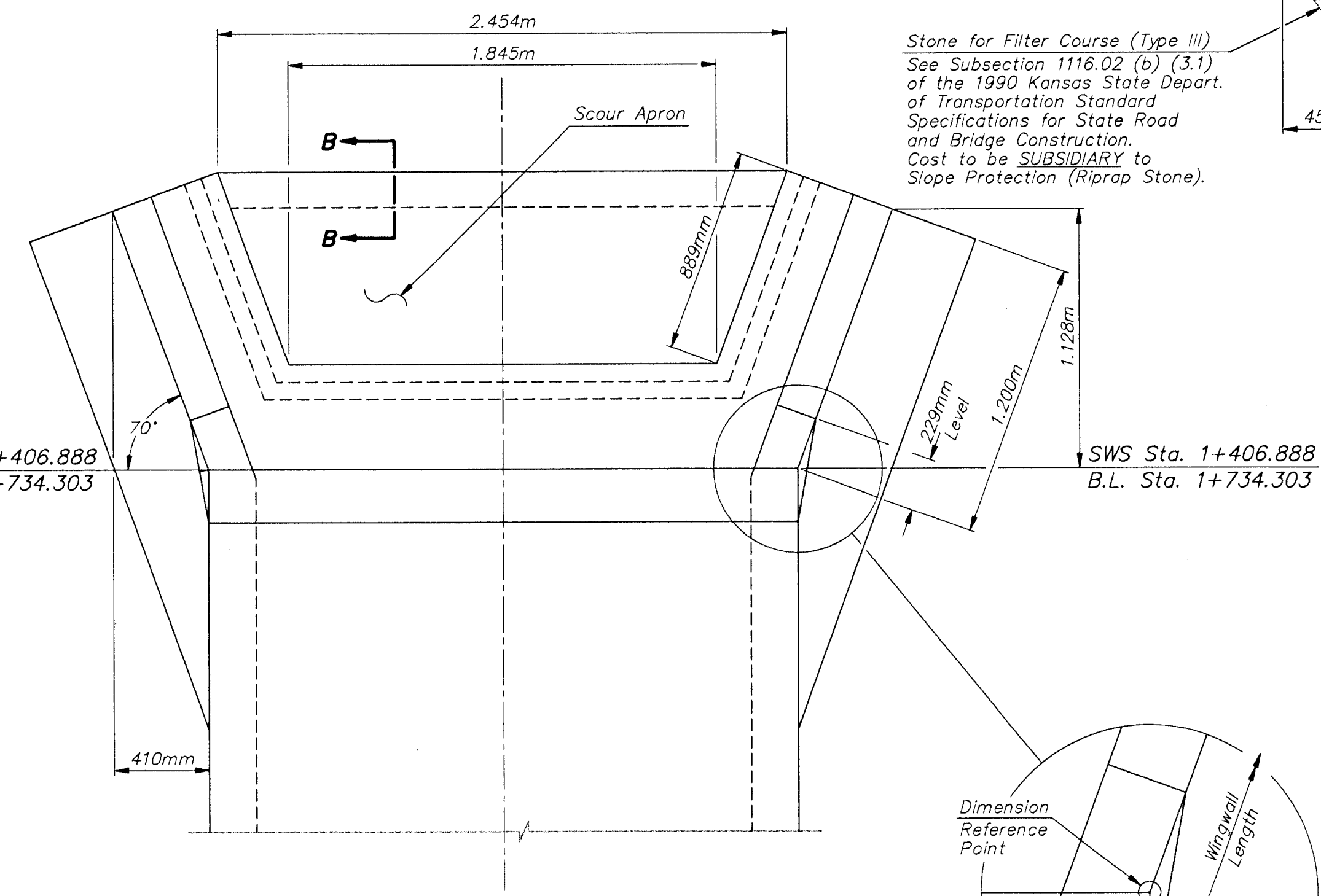
(All dimensions are out to out of bars.)



**SECTION C-C**  
(Plan of Footing)

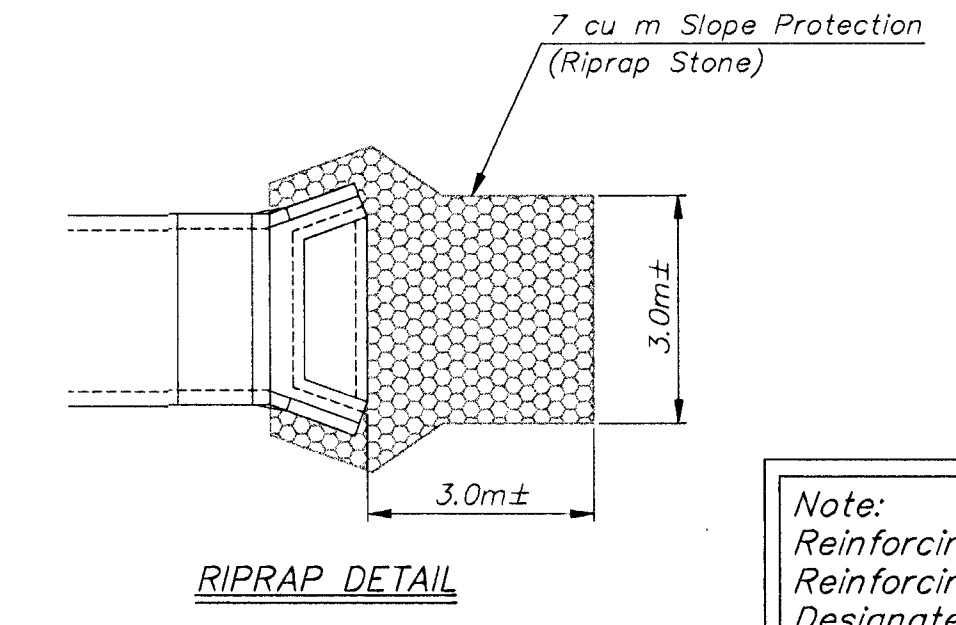
SWS Sta. 1+406.888  
B.L. Sta. 1+734.303

SWS Sta. 1+406.888  
B.L. Sta. 1+734.303



**WING DIMENSIONS FOR NORMAL BOX**  
(3 1/2:1 Embankment Slope)

\*\*\* See Bending Diagram



**RIPRAP DETAIL**

Note:  
Reinforcing Steel and Wire Reinforcing Mesh Sizes are Designated in Metric Units.

Quantities listed below are included in the Summary of Quantities shown on the RCB details.

WINGWALL QUANTITIES (One End Only)	
Class AAA Concrete:	
Wingwalls	1.75 cu. meter
Apron	0.46 cu. meter
Soil Saver	--- cu. meter
Reinforcing Steel	89.6 kg
Welded Wire Fabric	4.32 kg

Slope Protection (Riprap Stone)	
Weight	Minimum Percent Heavier Than:
454 kg	---
227 kg	---
113 kg	---
57 kg	---
34 kg	---
5 kg	---

Heavy Stone 1/4 ton.

Stone for Filter Course (Type III)	
Sieve Size	Percent Retained
152mm	---
127mm	---
102mm	---
76mm	---
51mm	---
25mm	---
13mm	---
9mm	---
No. 4	---

NOTE: Reinforcing Bar List is for both wings at one end of box only.

0° Skew	No.	#13 C1	#13 D1	#13 E1	#13 C2	#13 D2	#13 E2	#13 V1	#13 H1	#13 H2	#13 H3	#13 H4
	Length	2.279m	1.422m	0.838m	2.540m	1.575m	2.804m	***	0.802m	1.352m	1.524m	1.067m

PROJECT NUMBER  
**472 - 82908**

DESIGN STAFF: JFB  
DRAWN STAFF: JFB  
APPROVED: JFB  
DATE: NOV 98  
SCALE: NONE

STORM SEWER IMPROVEMENTS  
**WINGWALL DETAILS**  
CENTRAL AVENUE - PHASE 1 - WEST ST TO MCLEAN

**BAUGHMAN COMPANY P.A.**  
ENGINEERING, SURVEYING, & PLANNING  
316-262-7271 • 315 ELLIS • WICHITA, KANSAS 67211