

**BENCHMARKS**

BM #1 - City Disc Located @ 18.47m Southeast of the Section Corner Monument @ the Intersection of Central and West Street.  
Elev. = 399.073 SI Units (1309.28 MSL Datum)

D-18481-1

D-18481-2

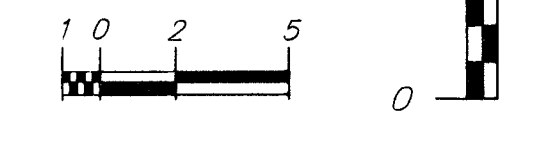
**METRIC**

REXSTILLER ADDITION

Scale: 1:200 (Horizontal)  
Scale: 1:40 (Vertical)

FHWA REGION NO.	STATE	PROJECT NO.	FISCAL YEAR	SHEET NO.	TOTAL SHEETS
7	KANSAS		1998	90	202

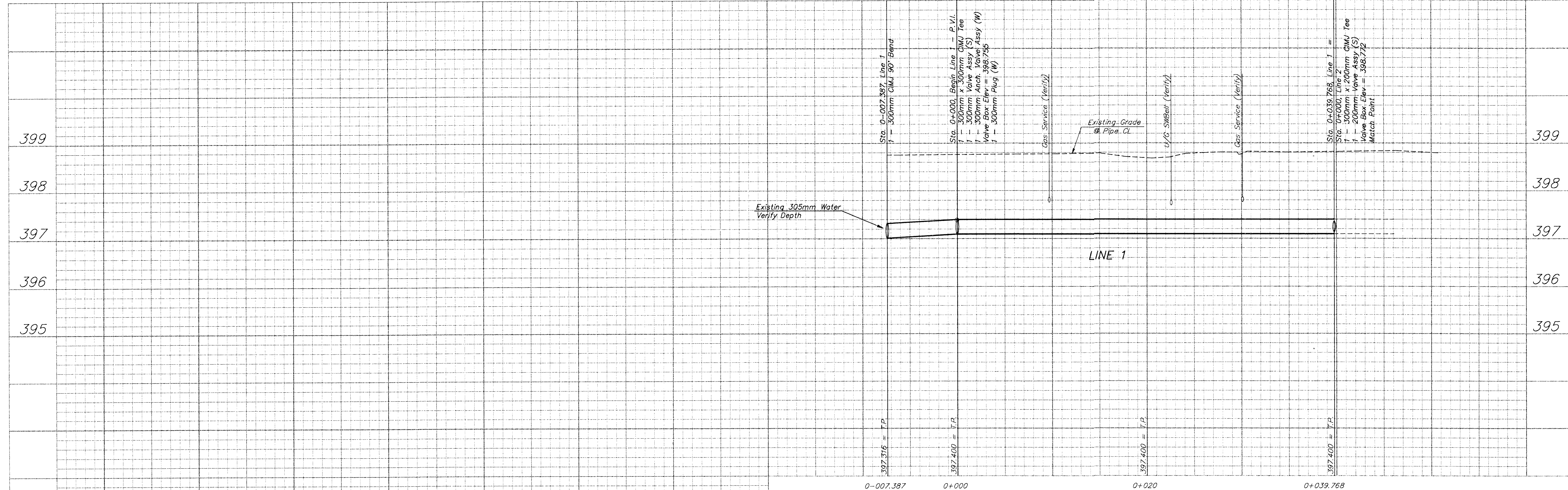
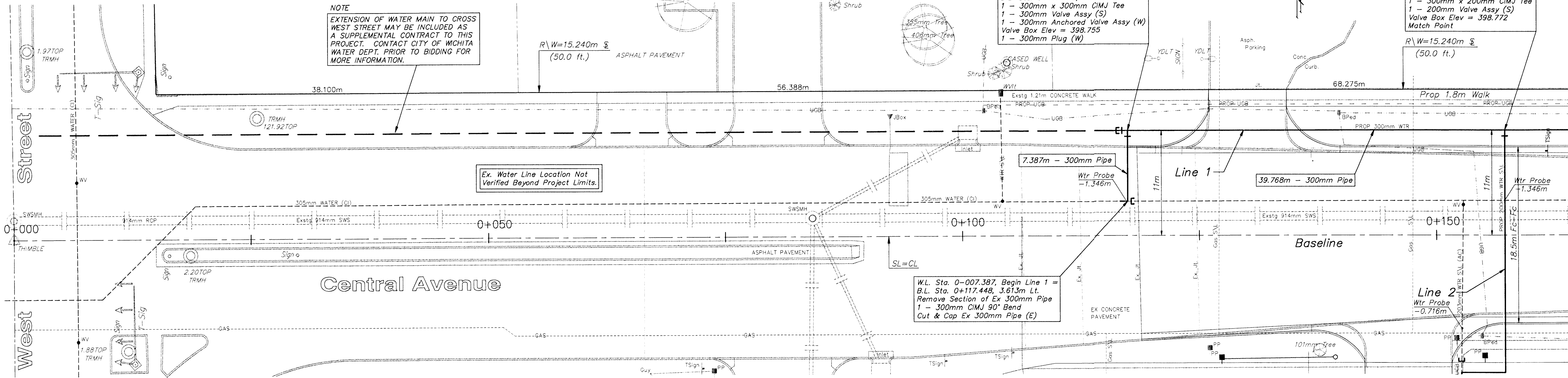
D-18481



**NOTE**  
EXTENSION OF WATER MAIN TO CROSS WEST STREET MAY BE INCLUDED AS A SUPPLEMENTAL CONTRACT TO THIS PROJECT. CONTACT CITY OF WICHITA WATER DEPT. PRIOR TO BIDDING FOR MORE INFORMATION.

W.L. Sta. 0+000, Line 1 =  
B.L. Sta. 0+117.448, 11.000m Lt.  
1 - 300mm x 300mm CIMJ Tee  
1 - 300mm Valve Assy (S)  
1 - 300mm Anchored Valve Assy (W)  
Valve Box Elev = 398.755  
1 - 300mm Plug (W)

W.L. Sta. 0+039.768, Line 1 =  
W.L. Sta. 0+000, Line 2 =  
B.L. Sta. 0+157.216, 11.000m Lt.  
1 - 300mm x 200mm CIMJ Tee  
1 - 200mm Valve Assy (S)  
Valve Box Elev = 398.772  
Match Point



PROJECT NUMBER <b>448 - 88918</b>			
DESIGN JFB	DRAWN STAFF	APPROVED JFB	DATE NOV 98
SCALE NOTED		SHEET NAME wtr1.dwg	

PROJECT NUMBER  
97-12-E932  
DIRECTOR  
Santoso  
SHEET NAME  
wtr1.dwg

**WATER LINE IMPROVEMENTS - LINE 1**  
**B.L. Sta. 0+117.448 to B.L. Sta. 0+157.816**  
CENTRAL AVENUE - WEST ST TO MCLEAN

**BAUGHMAN COMPANY P. A.**  
ENGINEERING, SURVEYING, & PLANNING  
318-282-7211 • 315 ELLIS • WICHITA, KANSAS 67211

SHEET  
OF  
**90**  
OF  
**202**