

BENCHMARKS

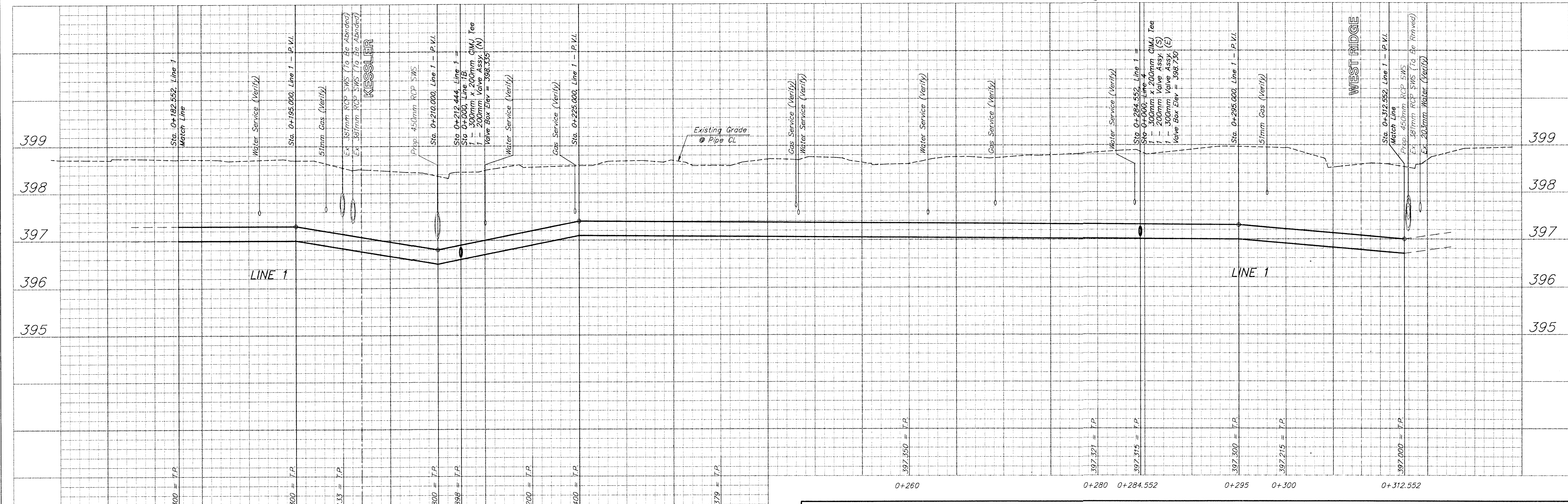
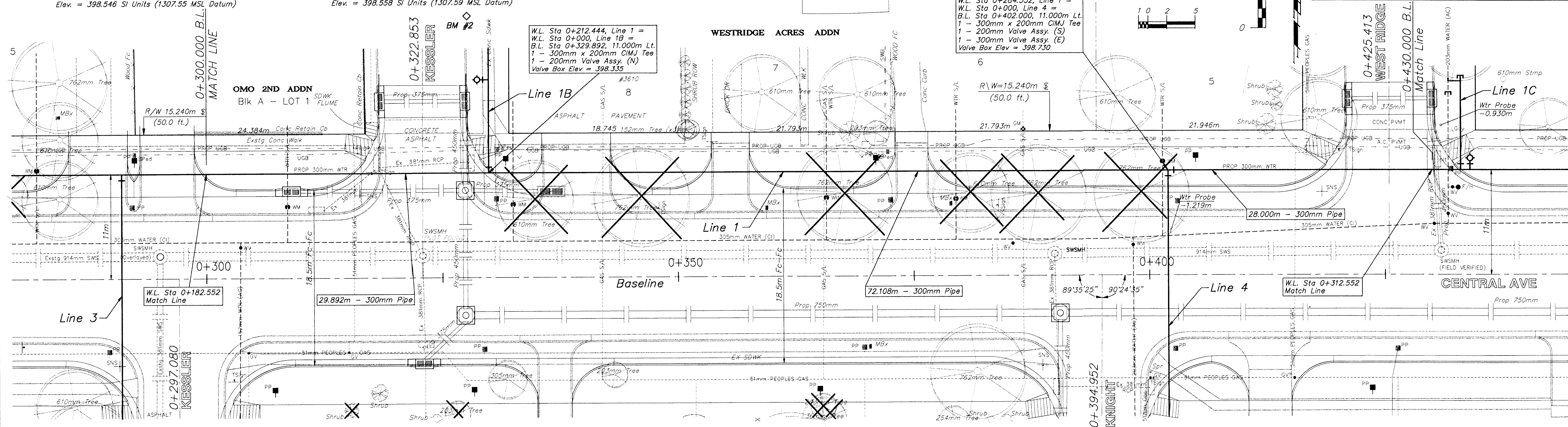
BM #2 - "□" Top of Curb @ 4.72m West and 27.83m North of the Centerline of both Central and Kessler. Elev. = 398.546 SI Units (1307.55 MSL Datum)

BM #3 - "□" Top of Curb @ 4.72m East and 24.69m South of the Centerline of both Central and Knight. Elev. = 398.558 SI Units (1307.59 MSL Datum)

METRIC

Scale: 1:200 (Horizontal)
Scale: 1:40 (Vertical)

FHWA REGION NO.	STATE	PROJECT NO.	FISCAL YEAR	SHEET NO.	TOTAL SHEETS
7	KANSAS		1998	92	202



PROJECT NUMBER 448 - 88918		PROJECT NUMBER 97-12-E932	
DESIGN JFB		DIRECTOR SANTOS WTR	
DRAWN STAFF		SHEET NAME wtr3.dwg	
APPROVED JFB		DATE NOV 98	
SCALE NOTED		SCALE NOTED	

WATER LINE IMPROVEMENTS - Line 1
B.L. Sta. 0+300.000 to B.L. Sta. 0+430.000
CENTRAL AVENUE - WEST ST TO MCLEAN

BAUGHMAN COMPANY P.A.
ENGINEERING, SURVEYING, & PLANNING
316-282-7271 • 315 ELLIS • WICHITA, KANSAS 67211

SHEET **92** OF **202**