

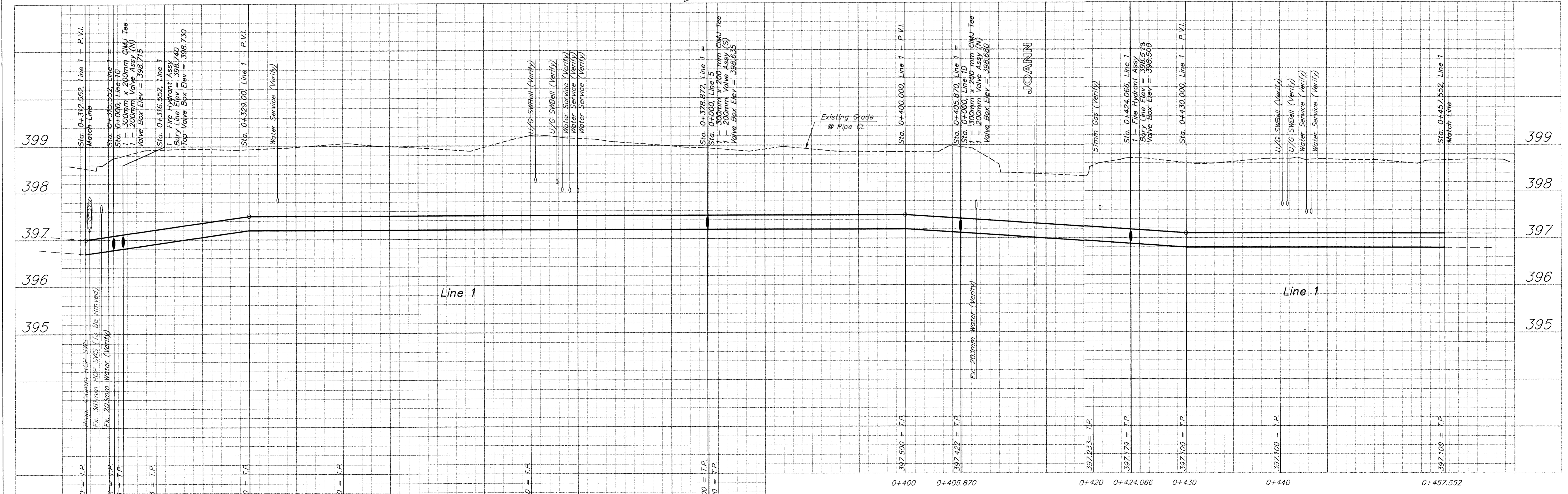
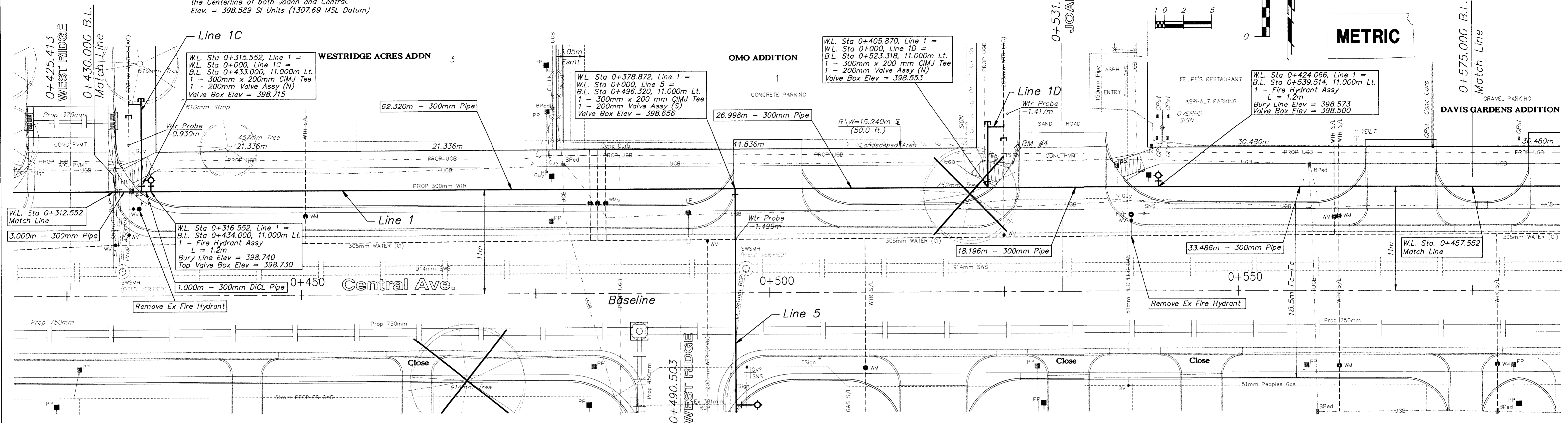
**BENCHMARKS**

BM #4 - "□" Top of Curb @ 15.24m North and 4.72m West of the Centerline of both Joann and Central.  
Elev. = 398.589 SI Units (1307.69 MSL Datum)

FHWA REGION NO.	STATE	PROJECT NO.	FISCAL YEAR	SHEET NO.	TOTAL SHEETS
7	KANSAS		1998	93	202

Scale: 1:200 (Horizontal)  
Scale: 1:40 (Vertical)

**METRIC**



PROJECT NUMBER <b>448 - 88918</b>				PROJ. NUMBER 97-12-E932	
DESIGN JFB	DRAWN STAFF	APPROVED JFB	DATE NOV 98	SCALE NOTED	SHEET NAME wtr wtr4.dwg
<b>WATER LINE IMPROVEMENTS - Line 1</b> <b>B.L. Sta. 0+430.000 to B.L. Sta. 0+575.000</b> CENTRAL AVENUE - WEST ST TO MCLEAN					
<b>BAUGHMAN COMPANY P.A.</b> ENGINEERING, SURVEYING, & PLANNING 318-282-7271 • 318 ELLIS • WICHITA, KANSAS 67211				SHEET <b>93</b> OF <b>202</b>	