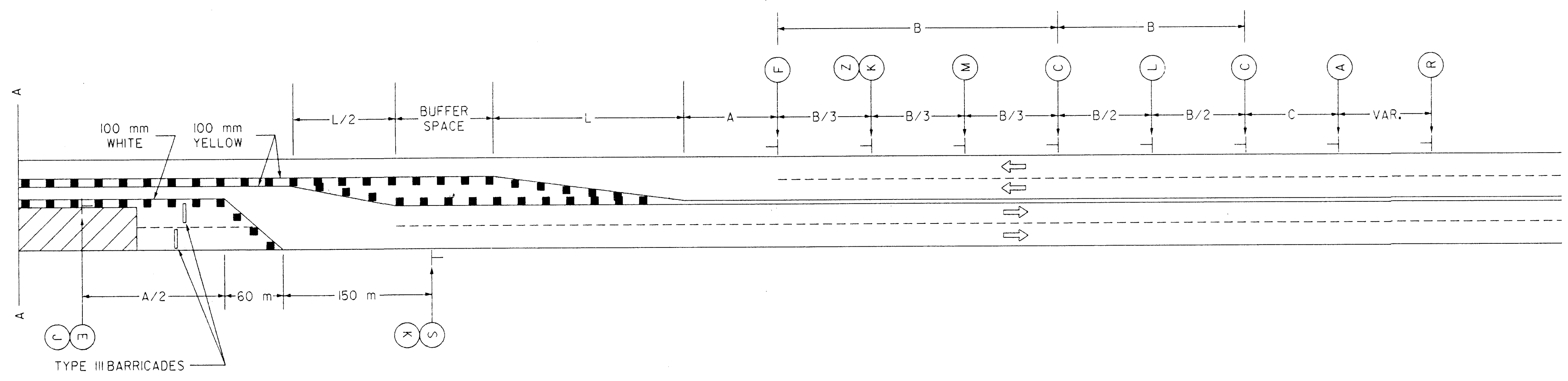
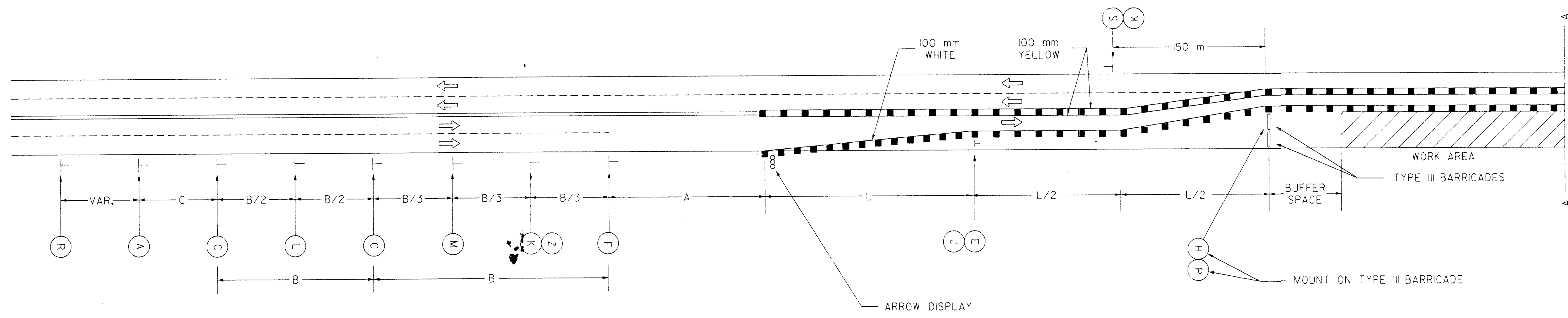


REFER TO STD. T753SI FOR IDENTIFICATION OF SIGNS FOR HANDLING TRAFFIC THROUGH CONSTRUCTION.
REFER TO STD. 735SI FOR DIMENSIONS.
■ = CHANNELIZING DEVICES



183
202

NO.	DATE	REVISION	BY	APP'D
1	10/10/96	ADDED M4-20 AND END OF WORK ZONE R2-1 SIGNS	WPR	NAB

KANSAS DEPARTMENT OF TRANSPORTATION
TYPICAL TRAFFIC CONTROL
FOUR-LANE UNDIVIDED HIGHWAY
ONE-HALF ROADWAY CLOSED
T753SI 7/1/94

DESIGNED	QUANTITIES	APP'D	Nelda A. Buckley
DESIGN CK.	DETAIL CK.	QUAN. CK.	TRACE CK.

Plot Date : 22-JAN-1997 15:00