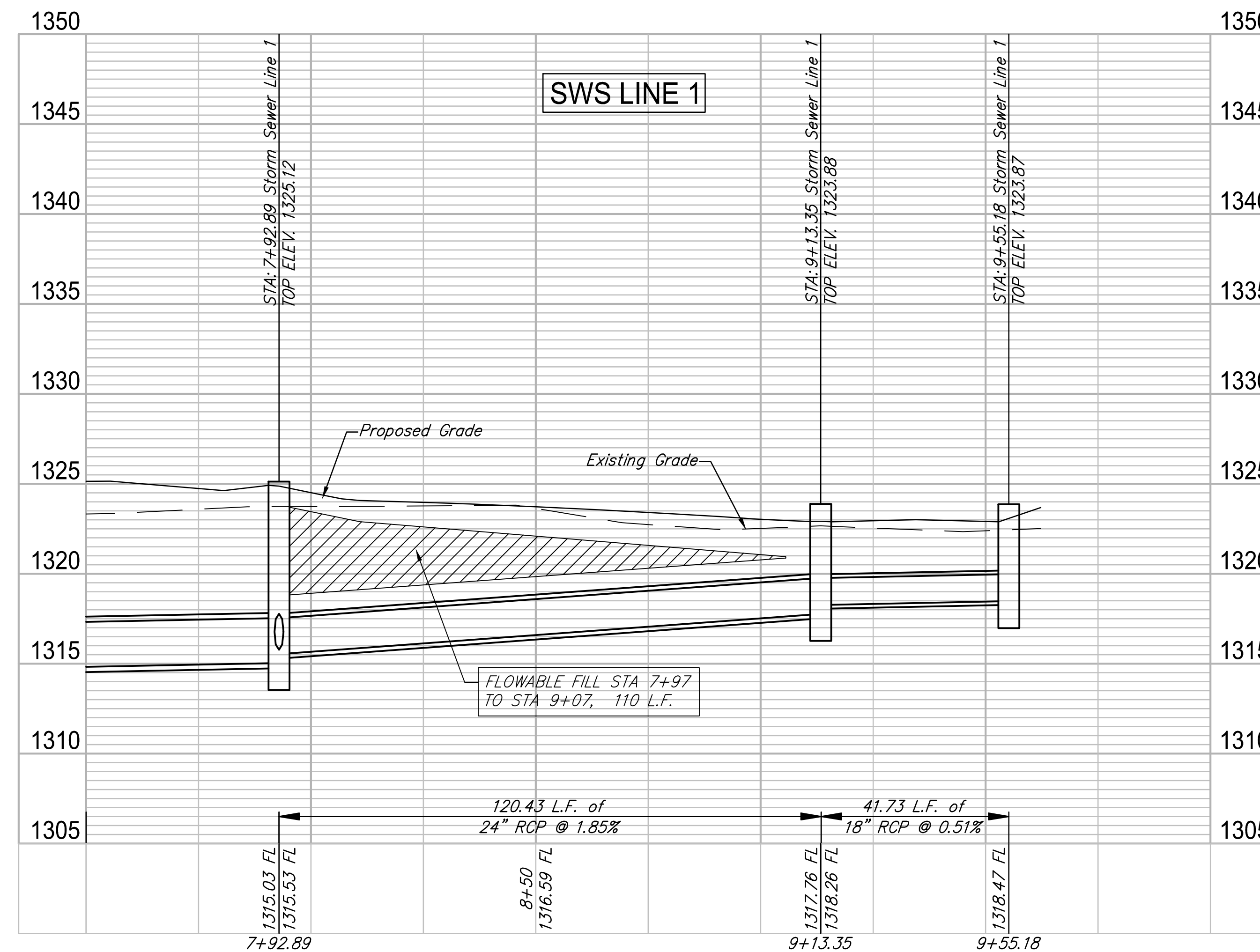
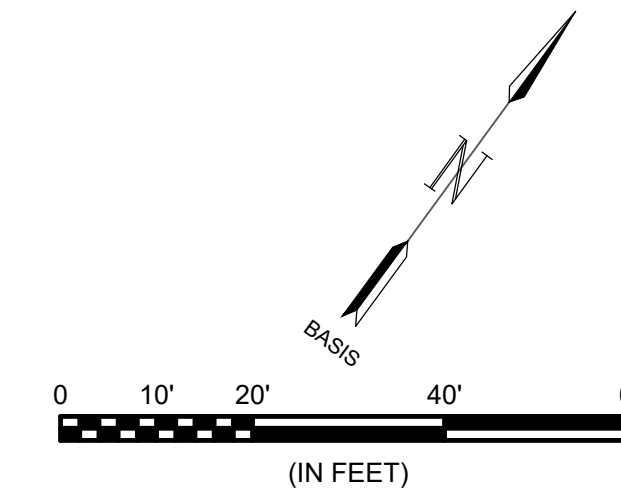
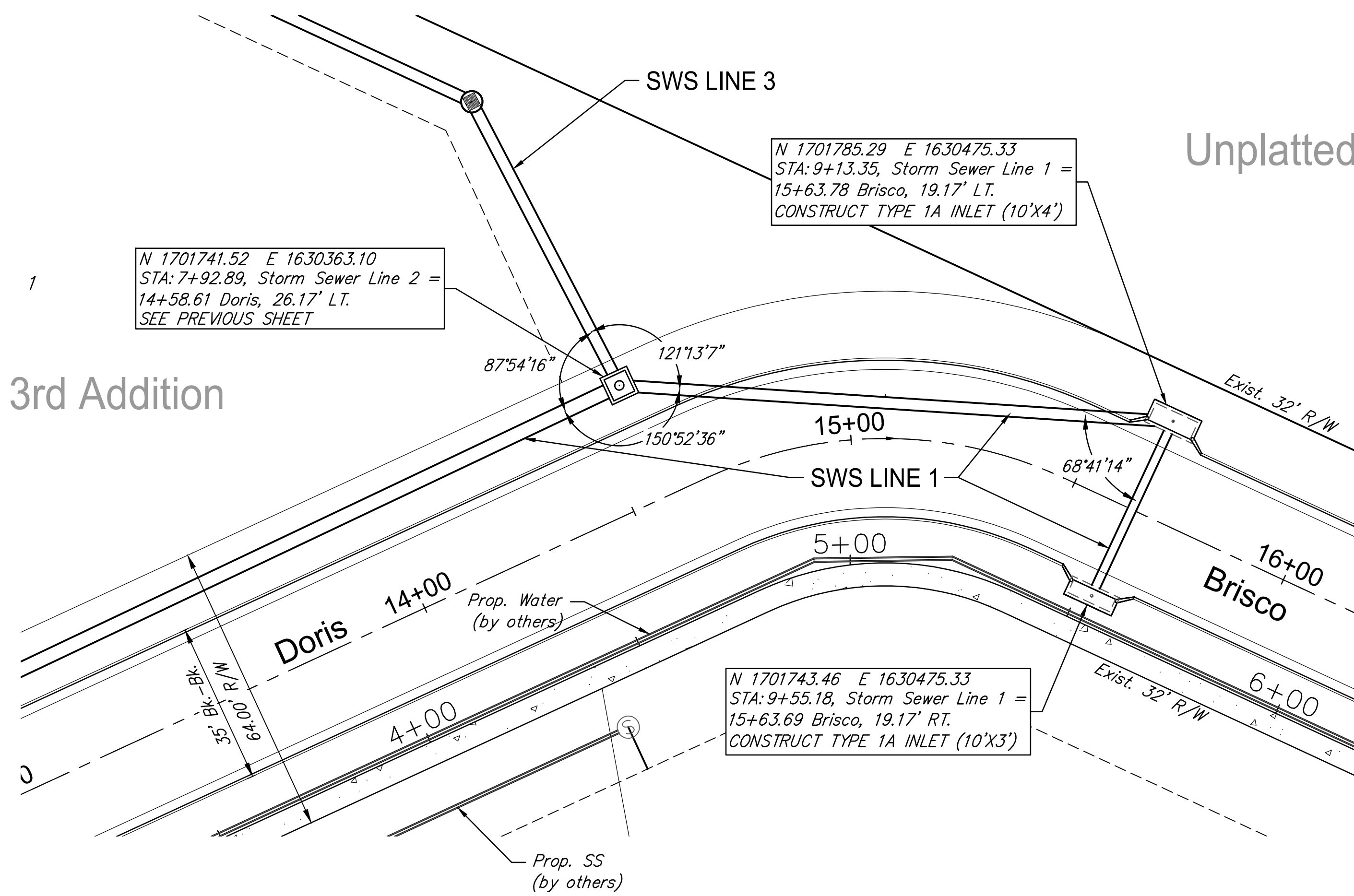




© 2018 GARVER, LLC
 THIS DOCUMENT, ALONG WITH THE IDEAS AND DESIGNS CONVEYED HEREIN, SHALL BE CONSIDERED INSTRUMENTS OF PROFESSIONAL SERVICE AND ARE PROPERTY OF GARVER, LLC. ANY USE, REPRODUCTION, OR DISTRIBUTION OF THIS DOCUMENT, ALONG WITH THE IDEAS AND DESIGN CONTAINED HEREIN, IS PROHIBITED UNLESS AUTHORIZED IN WRITING BY GARVER, LLC OR EXPLICITLY ALLOWED IN THE GOVERNING PROFESSIONAL SERVICES AGREEMENT FOR THIS WORK.

Emerald Bay Estates 3rd Addition



File: L:\2017\17264883 - Emerald Bay 3rd Improvements\Drawings\C3D\SWD12 SWS Line 1 (3).dwg Last Save: 4/17/2018 9:28 AM Last saved by: DRStandrich
 Last plotted by: Glover, Eric J. Plot Style: --- Plot Scale: 1:2.5849 Plot Date: 4/17/2018 10:48 AM Plotter used: None

REV.	DATE	DESCRIPTION	BY

City of Wichita, KS
 Project #: 468-85241
 OCA: 751566
 Emerald Bay 3rd
 Storm Water Drain Project

SWS Line 1
 (3 of 3)

JOB NO.: 17264883
 DATE: Feb. 2018
 DESIGNED BY: EJJ
 DRAWN BY: EJJ

BAR IS ONE INCH ON ORIGINAL DRAWING
 0 1" IF NOT ONE INCH ON THIS SHEET, ADJUST SCALES ACCORDINGLY.

SHEET NUMBER

TOTAL SHEETS **14 of 41**