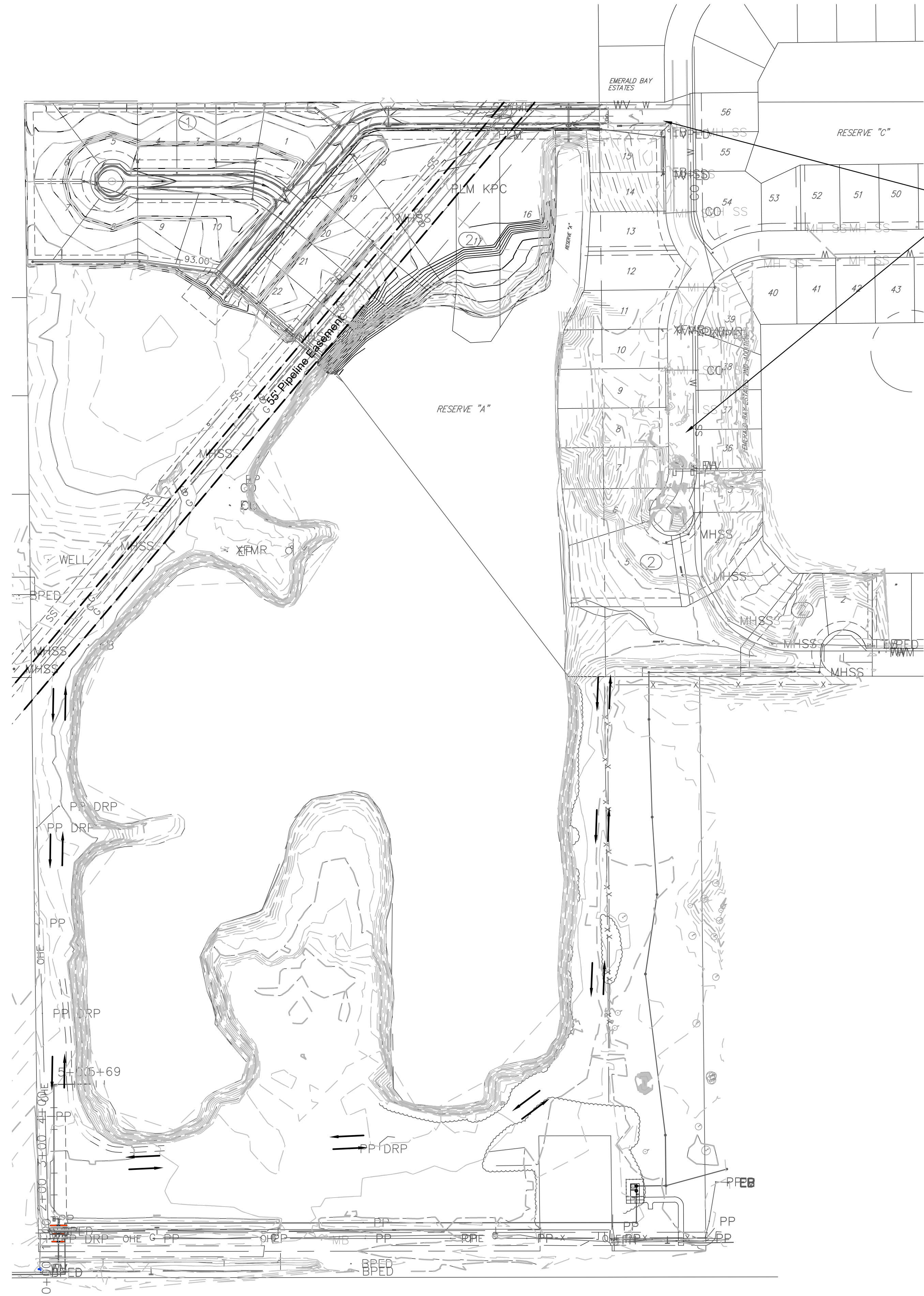




© 2018 GARVER, LLC
 THIS DOCUMENT, ALONG WITH THE IDEAS AND DESIGNS CONVEYED HEREIN, SHALL BE CONSIDERED INSTRUMENTS OF PROFESSIONAL SERVICE AND ARE PROPERTY OF GARVER, LLC. ANY USE, REPRODUCTION, OR DISTRIBUTION OF THIS DOCUMENT, ALONG WITH THE IDEAS AND DESIGN CONTAINED HEREIN, IS PROHIBITED UNLESS AUTHORIZED IN WRITING BY GARVER, LLC OR EXPLICITLY ALLOWED IN THE GOVERNING PROFESSIONAL SERVICES AGREEMENT FOR THIS WORK.



NO CONSTRUCTION TRAFFIC IS ALLOWED TO TRAVEL THROUGH EMERALD BAY ADDITION.

PIPELINE CROSSING NOTES:

CONTACT INFORMATION:


KPC PIPELINE - GARRETT BENSON - 316-217-6236
 PHILLIPS 66 PIPELINE - ANDRES MARTINEZ - 316-655-5058

1. Contact both pipeline companies a minimum of 2 weeks prior to construction.
2. Prior to any construction, vehicles, or equipment crossing the pipeline, an on-site safety meeting with Phillips 66 Pipeline and KPC Pipeline will be required.
3. At the meeting, crossing locations and requirement will be reviewed.
4. Crossing of the pipeline by vehicles or equipment shall only be allowed at locations approved by the pipeline representative.
5. Contact pipeline representatives any time construction will occur within the pipeline easement.
6. Orange safety fence shall be installed on the easement line of the pipelines prior to any construction activity to reduce access to only the prior agreed to crossing locations.
7. No vibratory equipment shall be used within the pipeline easement.

⇌ Haul Route

File: L:\2017\17264883 - Emerald Bay 3rd Improvements\Drawings\C3D\SVD\EB3 Haul Routes.dwg Last Save: 4/11/2018 4:50 PM Last saved by: EJGlover
 Last plotted by: Glover, Eric J. Plot Style: --- Plot Scale: 1:2.5849 Plot Date: 4/17/2018 10:44 AM Plotter used: None

REV.	DATE	DESCRIPTION	BY


 City of Wichita, KS
 Project #: 468-85241
 OCA: 751566
 Emerald Bay 3rd
 Storm Water Drain Project

Pipeline Coordination-Haul Routes

JOB NO.: 17264883
 DATE: Feb. 2018
 DESIGNED BY: .
 DRAWN BY: .

BAR IS ONE INCH ON ORIGINAL DRAWING
 0 1" IF NOT ONE INCH ON THIS SHEET, ADJUST SCALES ACCORDINGLY.

SHEET NUMBER