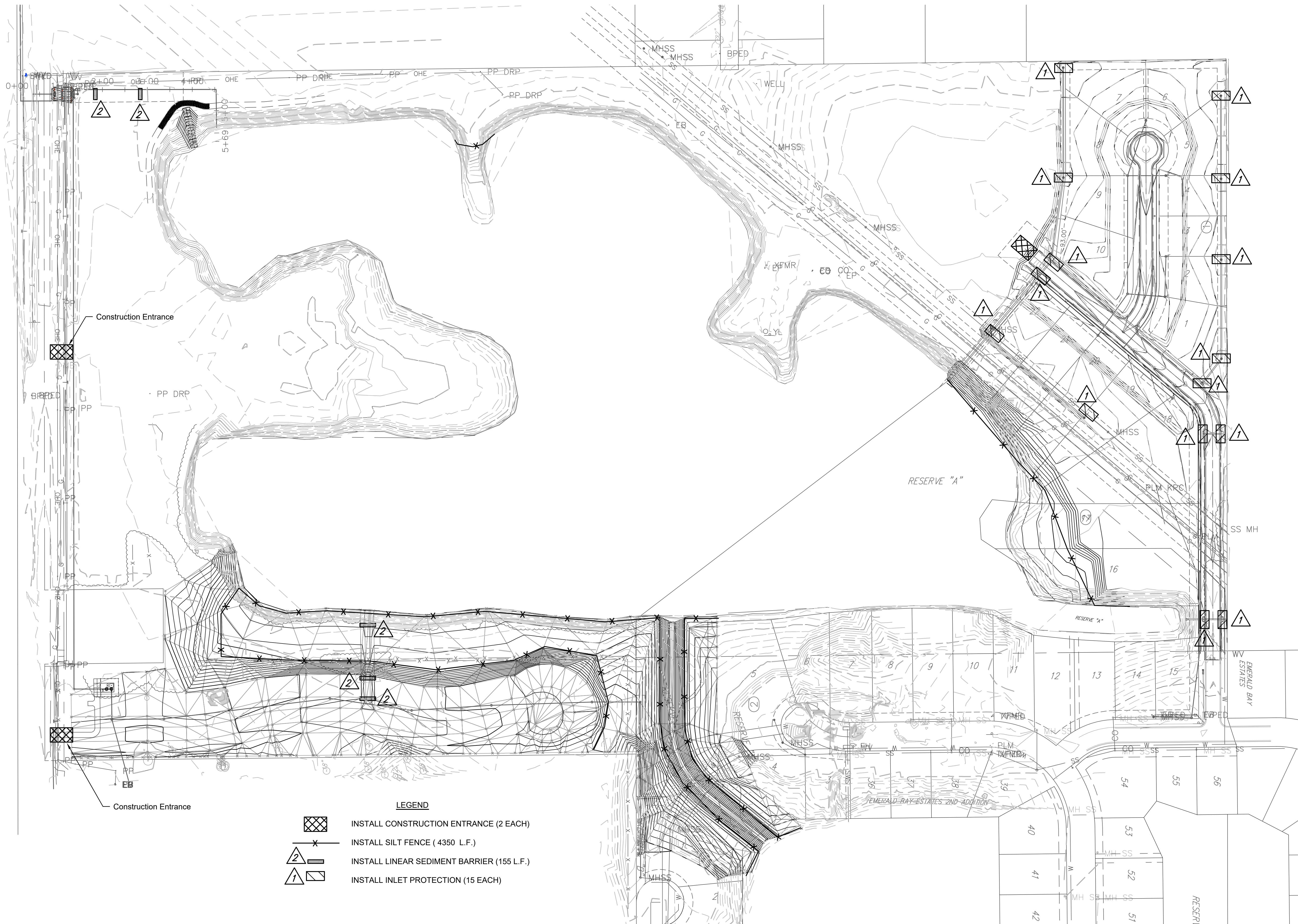
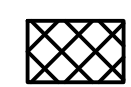
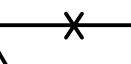







© 2018 GARVER, LLC
 THIS DOCUMENT, ALONG WITH THE IDEAS AND DESIGNS CONVEYED HEREIN, SHALL BE CONSIDERED INSTRUMENTS OF PROFESSIONAL SERVICE AND ARE PROPERTY OF GARVER, LLC. ANY USE, REPRODUCTION, OR DISTRIBUTION OF THIS DOCUMENT, ALONG WITH THE IDEAS AND DESIGN CONTAINED HEREIN, IS PROHIBITED UNLESS AUTHORIZED IN WRITING BY GARVER, LLC OR EXPLICITLY ALLOWED IN THE GOVERNING PROFESSIONAL SERVICES AGREEMENT FOR THIS WORK.



- LEGEND**
-  INSTALL CONSTRUCTION ENTRANCE (2 EACH)
 -  INSTALL SILT FENCE (4350 L.F.)
 -  INSTALL LINEAR SEDIMENT BARRIER (155 L.F.)
 -  INSTALL INLET PROTECTION (15 EACH)

File: L:\2017\17264883 - Emerald Bay 3rd Improvements\Drawings\C3D\SWD\Erosion Control Plan-Paving.dwg Last Save: 4/17/2018 9:29 AM Last saved by: DRStandrich
 Last plotted by: Glover, Eric J. Plot Date: 4/17/2018 10:52 AM Plotter used: None

REV.	DATE	DESCRIPTION	BY

 City of Wichita, KS
 Project #: 468-85241
 OCA: 751566
 Emerald Bay 3rd
 Storm Water Drain Project

Erosion Control Plan

JOB NO.: 17264883
 DATE: Feb. 2018
 DESIGNED BY: E.JG
 DRAWN BY: DRS

BAR IS ONE INCH ON ORIGINAL DRAWING
 IF NOT ONE INCH ON THIS SHEET, ADJUST SCALES ACCORDINGLY.

SHEET NUMBER
 TOTAL SHEETS **27** OF **42**