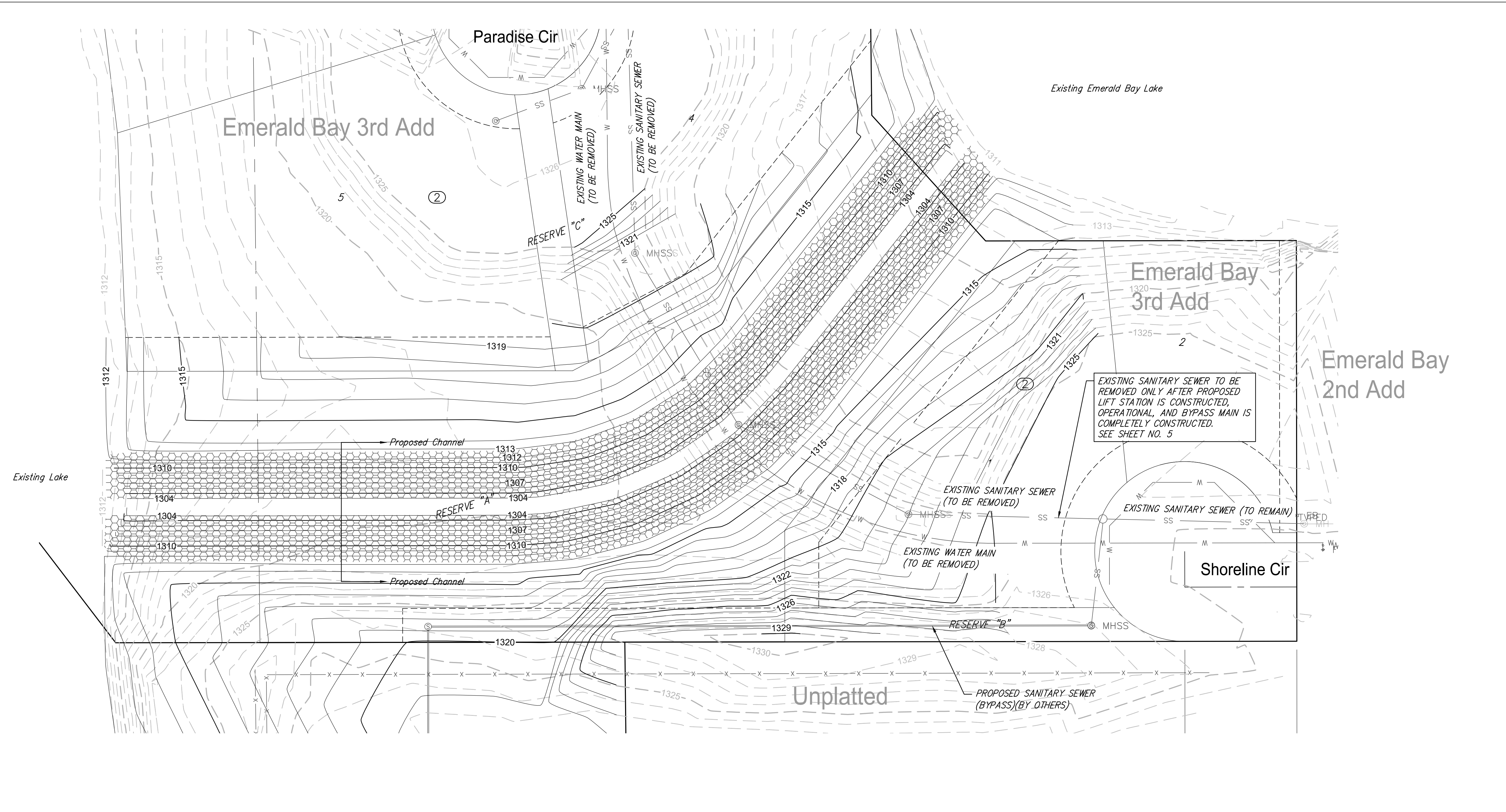




© 2018 GARVER, LLC  
 THIS DOCUMENT, ALONG WITH THE IDEAS AND DESIGNS CONVEYED HEREIN, SHALL BE CONSIDERED INSTRUMENTS OF PROFESSIONAL SERVICE AND ARE PROPERTY OF GARVER, LLC. ANY USE, REPRODUCTION, OR DISTRIBUTION OF THIS DOCUMENT, ALONG WITH THE IDEAS AND DESIGN CONTAINED HEREIN, IS PROHIBITED UNLESS AUTHORIZED IN WRITING BY GARVER, LLC OR EXPLICITLY ALLOWED IN THE GOVERNING PROFESSIONAL SERVICES AGREEMENT FOR THIS WORK.



EXISTING SANITARY SEWER TO BE REMOVED ONLY AFTER PROPOSED LIFT STATION IS CONSTRUCTED, OPERATIONAL, AND BYPASS MAIN IS COMPLETELY CONSTRUCTED. SEE SHEET NO. 5

EXISTING SANITARY SEWER (TO BE REMOVED)  
 EXISTING WATER MAIN (TO BE REMOVED)

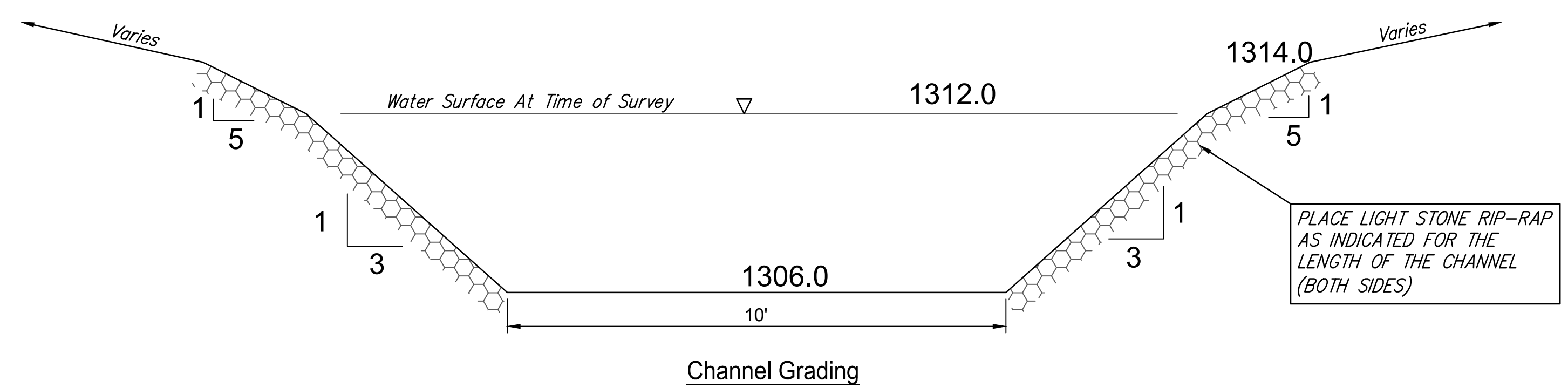
EXISTING SANITARY SEWER (TO REMAIN)

Unplatted

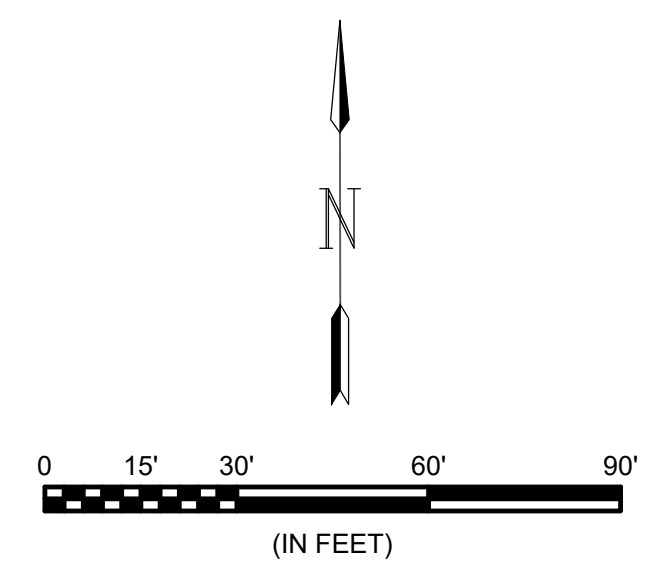
PROPOSED SANITARY SEWER (BYPASS) (BY OTHERS)

File: L:\2017\17264883 - Emerald Bay 3rd Improvements\Drawings\C3D\SVD\Site Grading Channel.dwg, Last Save: 3/29/2018 7:51 AM, Last saved by: DRS\standrich  
 Last plotted by: Glover, Eric J., Plot Style: ---, Plot Scale: 1:2,5849, Plot Date: 4/17/2018 10:45 AM, Plotter used: None

LIGHT STONE RIP-RAP  
3700 SQ YDS



PLACE LIGHT STONE RIP-RAP AS INDICATED FOR THE LENGTH OF THE CHANNEL (BOTH SIDES)



Proposed Contour —XXXX—  
 Existing Contour - - - - -

REV.	DATE	DESCRIPTION	BY

City of Wichita, KS  
 Project #: 468-85241  
 OCA: 751566  
 Emerald Bay 3rd  
 Storm Water Drain Project

Site Grading  
(Channel)

JOB NO.: 17264883  
 DATE: Feb. 2018  
 DESIGNED BY: EJG  
 DRAWN BY: EJG

BAR IS ONE INCH ON ORIGINAL DRAWING  
 0 1" IF NOT ONE INCH ON THIS SHEET, ADJUST SCALES ACCORDINGLY.

SHEET NUMBER  
 TOTAL SHEETS **4 OF 41**