



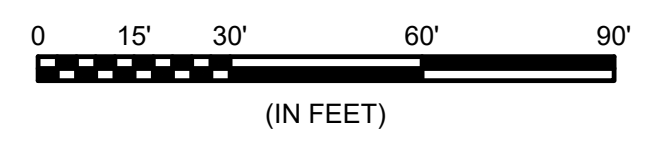
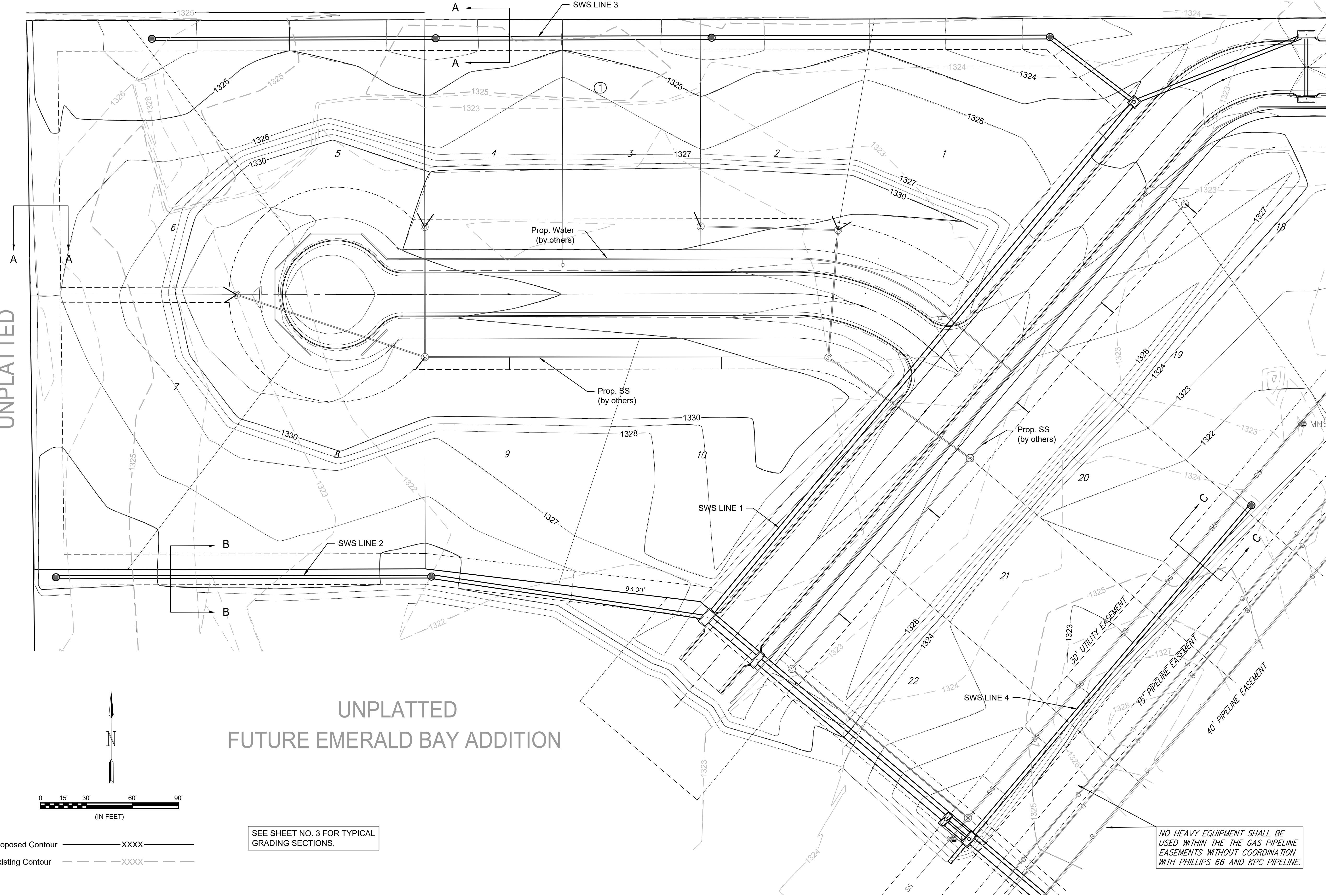
© 2018 GARVER, LLC
 THIS DOCUMENT, ALONG WITH THE IDEAS AND DESIGNS CONVEYED HEREIN, SHALL BE CONSIDERED INSTRUMENTS OF PROFESSIONAL SERVICE AND ARE PROPERTY OF GARVER, LLC. ANY USE, REPRODUCTION, OR DISTRIBUTION OF THIS DOCUMENT, ALONG WITH THE IDEAS AND DESIGN CONTAINED HEREIN, IS PROHIBITED UNLESS AUTHORIZED IN WRITING BY GARVER, LLC OR EXPLICITLY ALLOWED IN THE GOVERNING PROFESSIONAL SERVICES AGREEMENT FOR THIS WORK.

UNPLATTED

UNPLATTED

UNPLATTED
 FUTURE EMERALD BAY ADDITION

File: L:\2017\17264883 - Emerald Bay 3rd Improvements\Drawings\C3D\SVD\Site Grading NW.dwg Last Save: 3/29/2018 7:52 AM Last saved by: DRStandrich
 Last plotted by: Glover, Eric J. Plot Style: --- Plot Scale: 1:2,5849 Plot Date: 4/17/2018 10:46 AM Plotter used: None



Proposed Contour —XXXX—
 Existing Contour - - - - -

SEE SHEET NO. 3 FOR TYPICAL GRADING SECTIONS.

NO HEAVY EQUIPMENT SHALL BE USED WITHIN THE THE GAS PIPELINE EASEMENTS WITHOUT COORDINATION WITH PHILLIPS 66 AND KPC PIPELINE.

REV.	DATE	DESCRIPTION	BY

City of Wichita, KS
 Project #: 468-85241
 OCA: 751566
 Emerald Bay 3rd
 Storm Water Drain Project

Site Grading
 (Northwest)

JOB NO.: 17264883
 DATE: Feb. 2018
 DESIGNED BY: EJG
 DRAWN BY: EJG

BAR IS ONE INCH ON ORIGINAL DRAWING
 0 1" IF NOT ONE INCH ON THIS SHEET, ADJUST SCALES ACCORDINGLY.
 SHEET NUMBER

TOTAL SHEETS **7** OF **41**