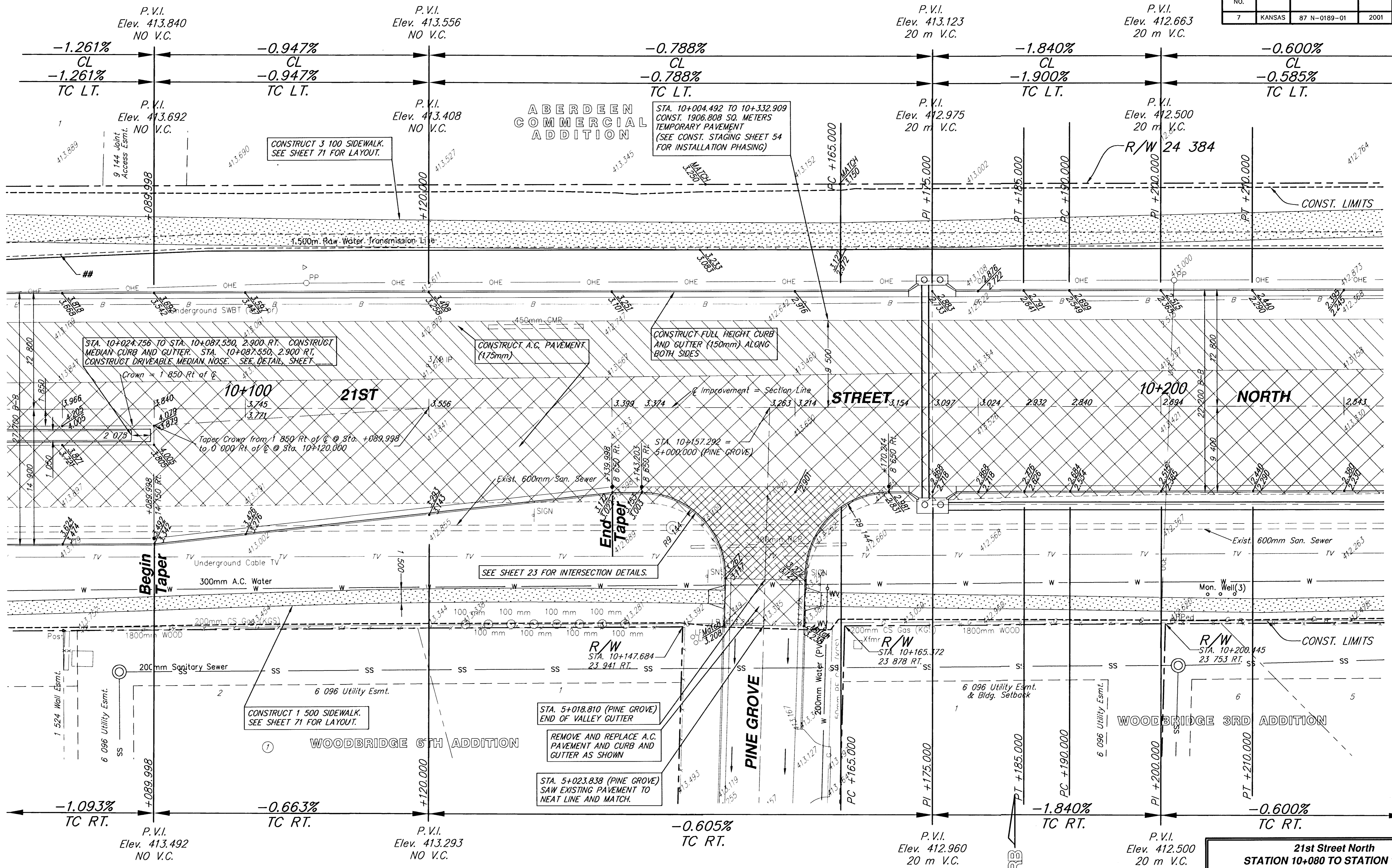


CAUTION!!! 1.500 m TRANSMISSION LINE FROM CHENEY RESERVOIR. SHALLOW DEPTH. CONTRACTOR TO MAINTAIN MINIMAL HEAVY EQUIPMENT TRAFFIC ACROSS LINE DURING CONSTRUCTION.

FHWA REGION NO.	STATE	PROJECT NUMBER	FISCAL YEAR	SHEET NUMBER	TOTAL SHEETS
7	KANSAS	87 N-0189-01	2001	10	105

BY	DATE



WOODBRIDGE 6TH ADDITION
WOODBRIDGE 3RD ADDITION
PINE GROVE

STA. 5+018.810 (PINE GROVE) END OF VALLEY GUTTER
 REMOVE AND REPLACE A.C. PAVEMENT AND CURB AND GUTTER AS SHOWN
 STA. 5+023.838 (PINE GROVE) SAW EXISTING PAVEMENT TO NEAT LINE AND MATCH.

21st Street North
STATION 10+080 TO STATION 10+220

SRB
 SAVOY, RUGGLES & BOHM, P.A.
 ENGINEERING & SURVEYING
 PROJECT NUMBER: 472-83138
 DRAWN: TEB, DESIGN: MWS, DATE: May 31, 2001, UTILITY, SRB JOB: 14781

SCALE
 5 0 5 10
 PLAN: Lat. & Long. (meters)