

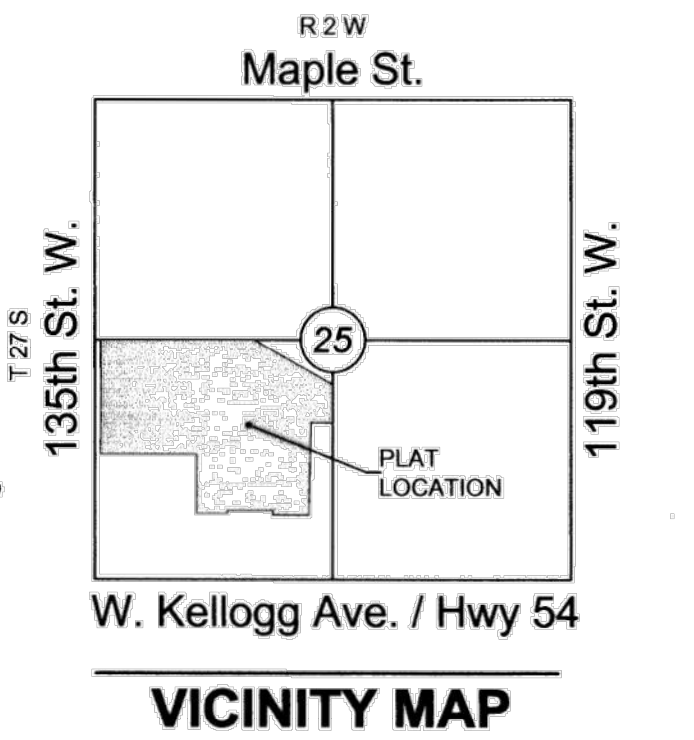
SUB2017-00050 Auburn Lakes Addition

FINAL PLAT

AUBURN LAKES ADDITION

AN ADDITION TO WICHITA, SEDGWICK COUNTY, KANSAS

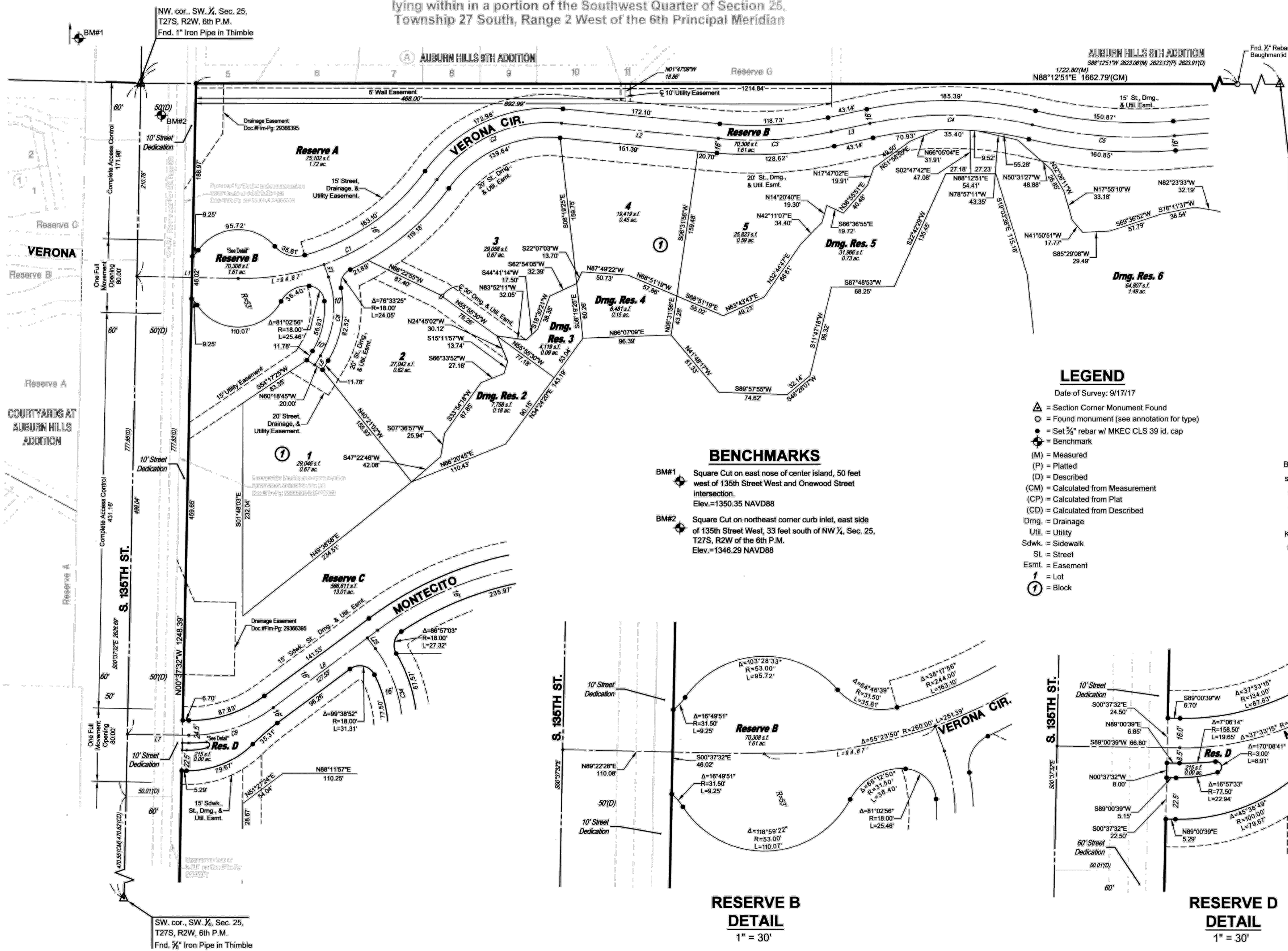
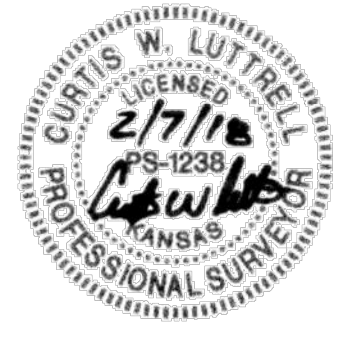
lying within in a portion of the Southwest Quarter of Section 25,
Township 27 South, Range 2 West of the 6th Principal Meridian



Curve #	Length	Radius	Delta	Chord Direction	Chord Length
C1	251.39'	260.00'	55°23'50"	N61°40'33"E	241.71'
C2	156.31'	150.00'	59°42'23"	N63°49'49"E	149.33'
C3	123.67'	400.00'	17°42'53"	N84°49'34"E	123.18'
C4	178.26'	400.00'	25°32'02"	N88°44'09"E	176.79'
C5	155.86'	500.00'	17°51'36"	S87°25'39"E	155.23'
C8	89.40'	100.00'	51°13'14"	N04°04'38"E	86.45'
C9	98.32'	150.00'	37°33'15"	N70°14'02"E	96.57'
C34	112.01'	150.00'	42°47'07"	N17°09'03"W	109.43'

Line #	Length	Direction
L1	110.08'	N89°22'28"E
L2	172.10'	S86°19'00"E
L3	43.14'	N75°58'08"E
L5	14.45'	S21°31'59"E
L6	11.78'	S29°41'15"W
L7	66.80'	N89°00'39"E
L8	141.53'	N51°27'24"E
L25	14.56'	N38°32'36"W

LOT(S)	BLOCK	ELEVATION NAVD 88
1	1	1342.5
2	1	1339.5
3-5	1	1337.2



BENCHMARKS

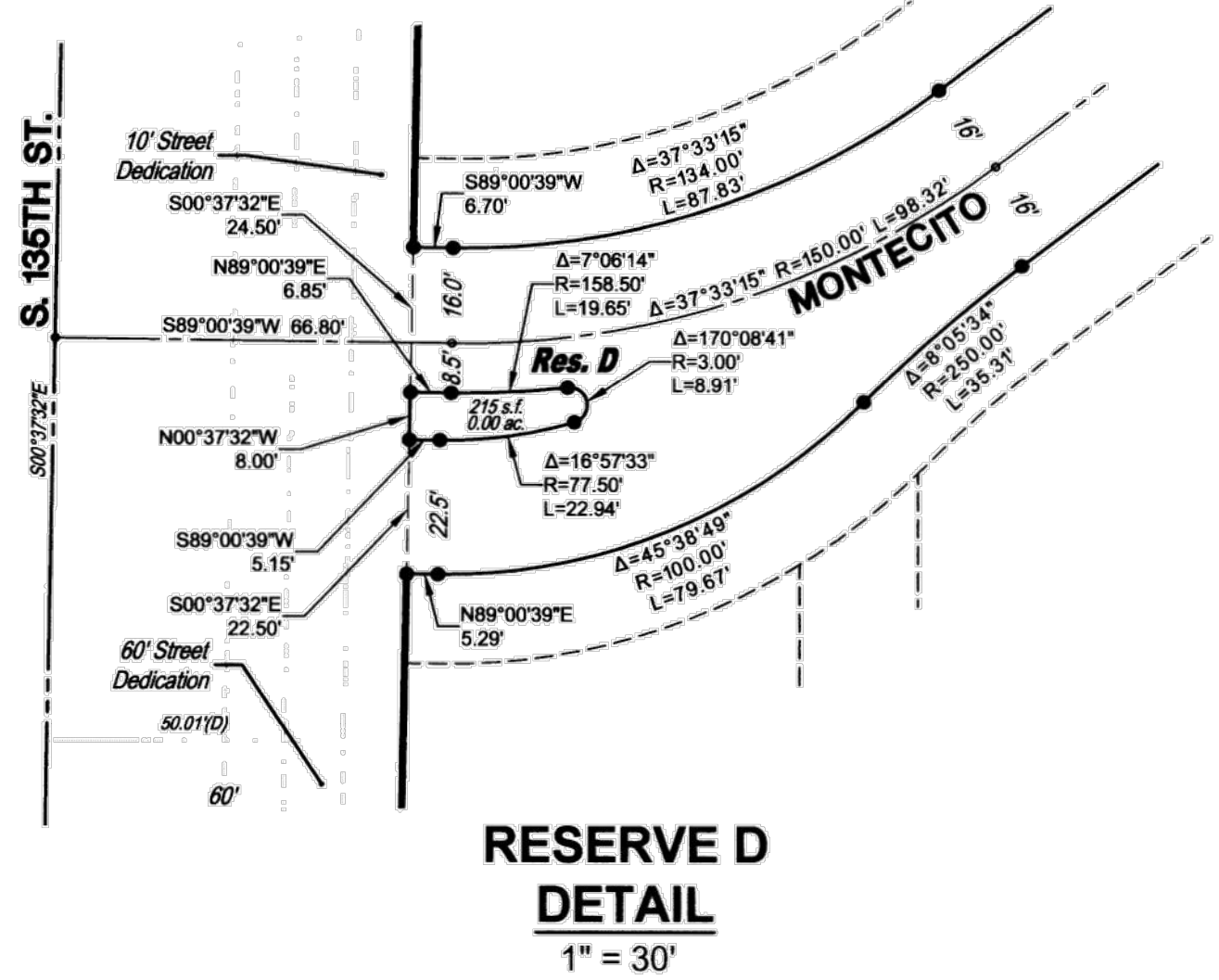
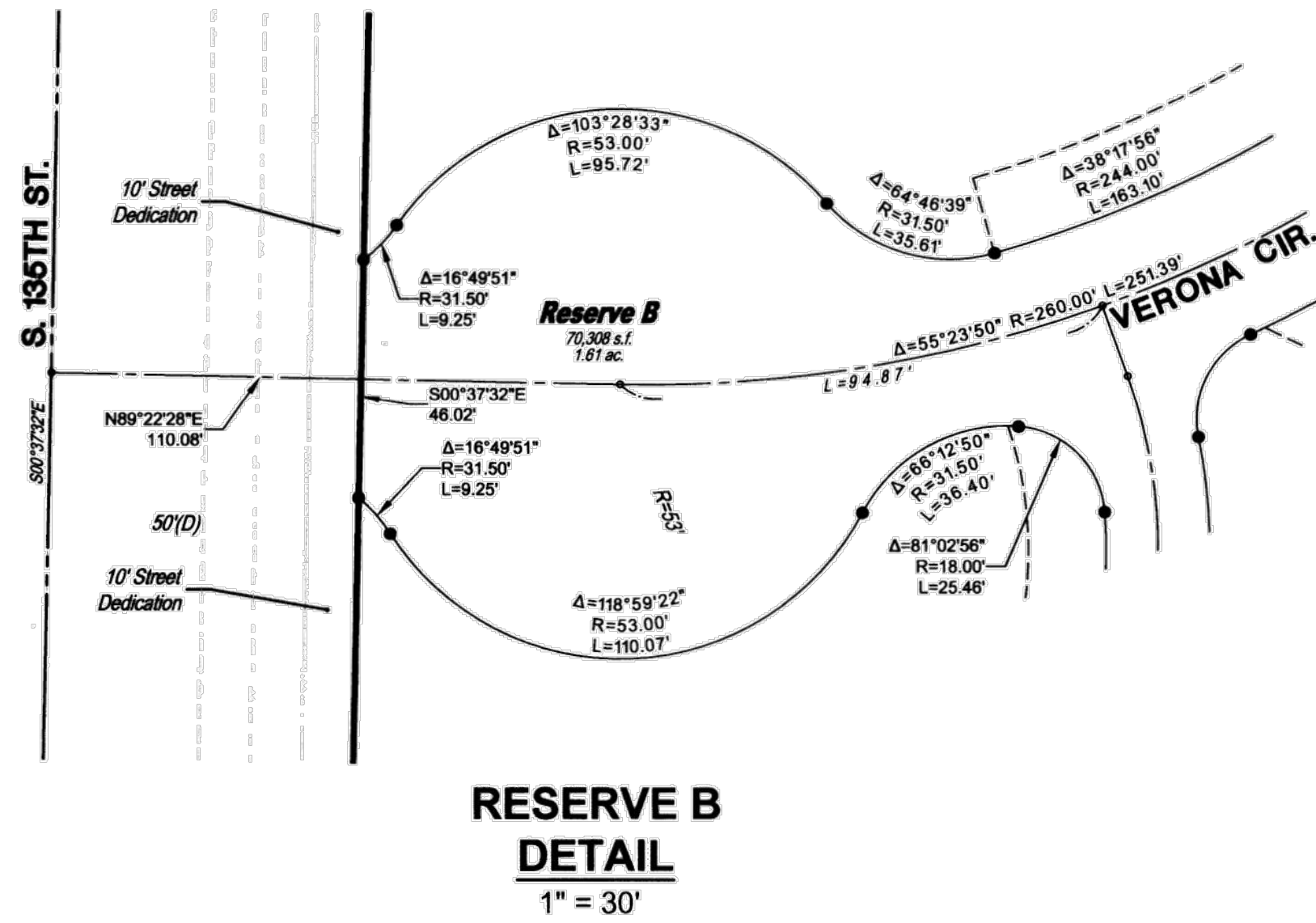
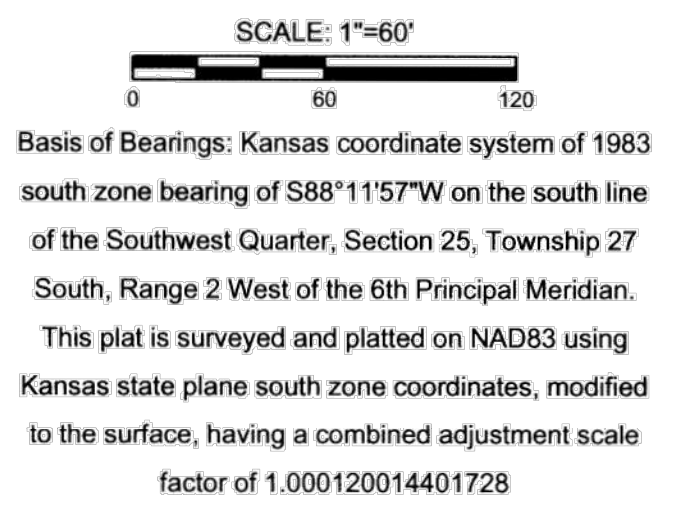
BM#1 Square Cut on east nose of center island, 50 feet west of 135th Street West and OneWood Street intersection. Elev.=1350.35 NAVD88

BM#2 Square Cut on northeast corner curb inlet, east side of 135th Street West, 33 feet south of NW 1/4, Sec. 25, T27S, R2W of the 6th P.M. Elev.=1346.29 NAVD88

LEGEND

Date of Survey: 9/17/17

- △ = Section Corner Monument Found
- = Found monument (see annotation for type)
- = Set 3/4" rebar w/ MKEC CLS 39 id. cap
- ⊕ = Benchmark
- (M) = Measured
- (P) = Platted
- (D) = Described
- (CM) = Calculated from Measurement
- (CP) = Calculated from Plat
- (CD) = Calculated from Described
- Dmg. = Drainage
- Util. = Utility
- Sdsk. = Sidewalk
- St. = Street
- Esmt. = Easement
- ① = Lot
- ② = Block



SUB2017-00050 Auburn Lakes Addition