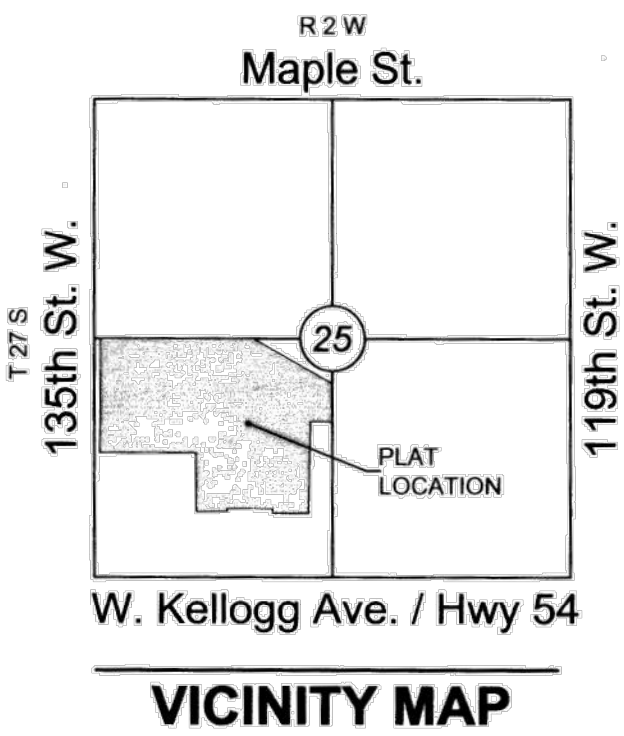


FINAL PLAT AUBURN LAKES ADDITION

AN ADDITION TO WICHITA, SEDGWICK COUNTY, KANSAS
lying within in a portion of the Southwest Quarter of Section 25,
Township 27 South, Range 2 West of the 6th Principal Meridian



SCALE: 1"=60'

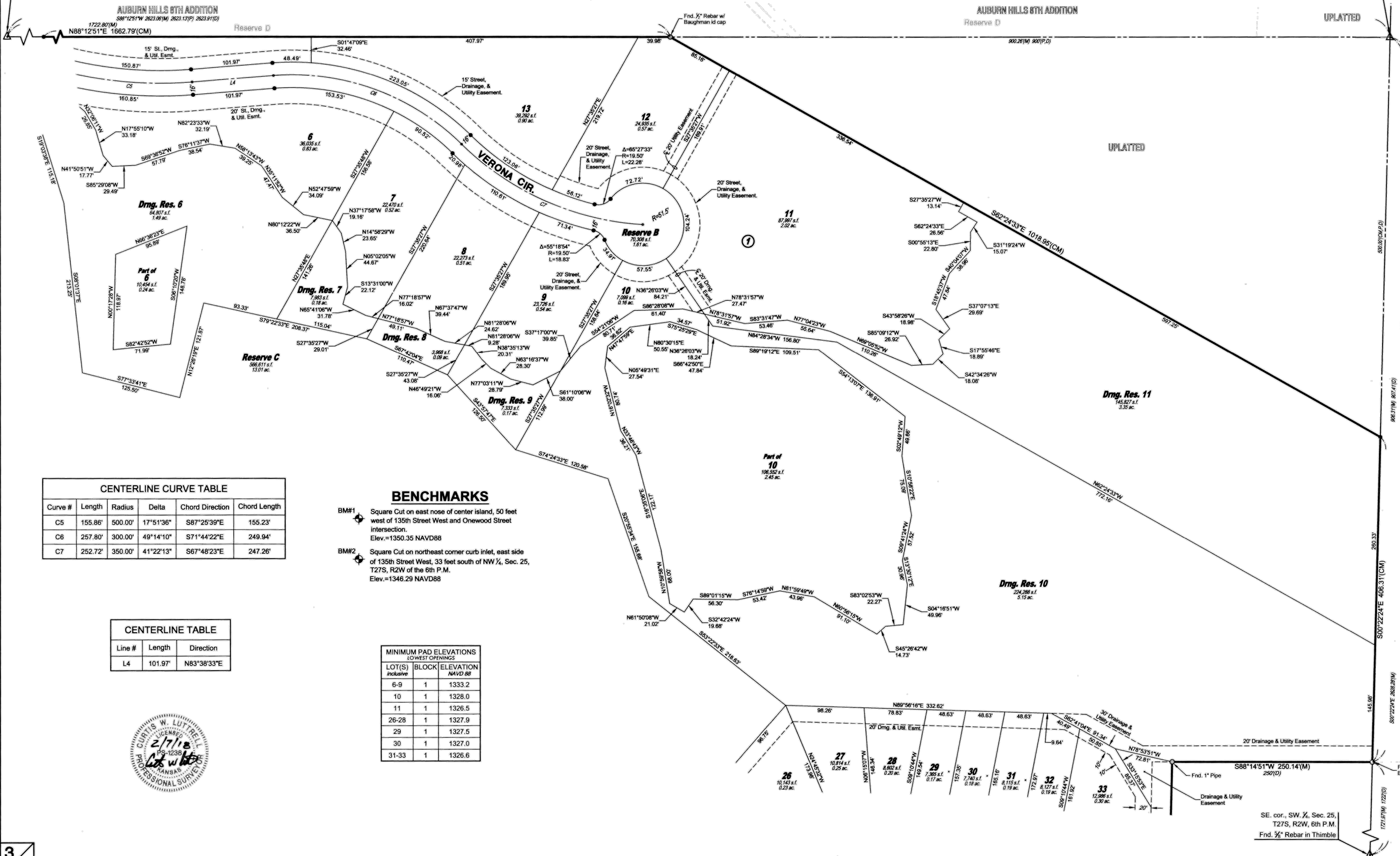
Basis of Bearings: Kansas coordinate system of 1983 south zone bearing of S88°11'57"W on the south line of the Southwest Quarter, Section 25, Township 27 South, Range 2 West of the 6th Principal Meridian. This plat is surveyed and platted on NAD83 using Kansas state plane south zone coordinates, modified to the surface, having a combined adjustment scale factor of 1.000120014401728

LEGEND

- Date of Survey: 9/17/17
- △ = Section Corner Monument Found
- = Found monument (see annotation for type)
- = Set 3/4" rebar w/ MKEC CLS 39 id. cap
- ⊙ = Benchmark
- (M) = Measured
- (P) = Platted
- (D) = Described
- (CM) = Calculated from Measurement
- (CP) = Calculated from Plat
- (CD) = Calculated from Described
- Dmg. = Drainage
- Util. = Utility
- Sdwk. = Sidewalk
- St. = Street
- Esmt. = Easement
- ① = Lot
- ① = Block

NW cor., SW 1/4, Sec. 25,
T27S, R2W, 6th P.M.
Fnd. 1" Iron Pipe in Thimble

NE cor., SW 1/4, Sec. 25,
T27S, R2W, 6th P.M.
Fnd. Stone



AUBURN HILLS 6TH ADDITION
1722.80'(M)
S88°12'51"E 1662.79'(CM)

AUBURN HILLS 6TH ADDITION
Reserve D

UPLATTED

CENTERLINE CURVE TABLE

| Curve # | Length | Radius | Delta | Chord Direction | Chord Length |
|---------|---------|---------|-----------|-----------------|--------------|
| C5 | 155.86' | 500.00' | 17°51'36" | S87°25'39"E | 155.23' |
| C6 | 257.80' | 300.00' | 49°14'10" | S71°44'22"E | 249.94' |
| C7 | 252.72' | 350.00' | 41°22'13" | S67°48'23"E | 247.26' |

BENCHMARKS

BM#1 Square Cut on east nose of center island, 50 feet west of 135th Street West and Onewood Street intersection. Elev.=1350.35 NAVD88

BM#2 Square Cut on northeast corner curb inlet, east side of 135th Street West, 33 feet south of NW 1/4, Sec. 25, T27S, R2W of the 6th P.M. Elev.=1346.29 NAVD88

CENTERLINE TABLE

| Line # | Length | Direction |
|--------|---------|-------------|
| L4 | 101.97' | N83°38'33"E |

**MINIMUM PAD ELEVATIONS
LOWEST OPENINGS
NAVD 88**

| LOT(S) inclusive | BLOCK | ELEVATION |
|---------------------|-------|-----------|
| 6-9 | 1 | 1333.2 |
| 10 | 1 | 1328.0 |
| 11 | 1 | 1326.5 |
| 26-28 | 1 | 1327.9 |
| 29 | 1 | 1327.5 |
| 30 | 1 | 1327.0 |
| 31-33 | 1 | 1326.6 |

