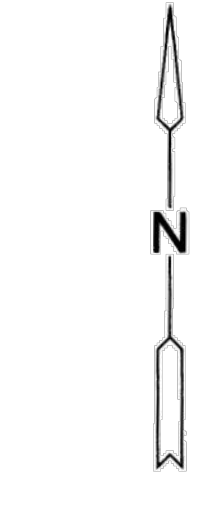
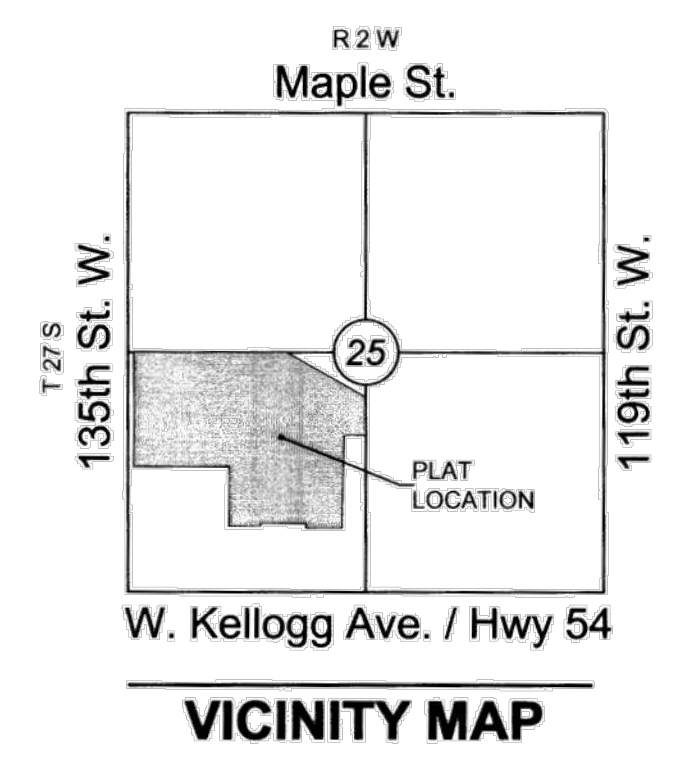


# FINAL PLAT

## AUBURN LAKES ADDITION

AN ADDITION TO WICHITA, SEDGWICK COUNTY, KANSAS

lying within in a portion of the Southwest Quarter of Section 25,  
Township 27 South, Range 2 West of the 6th Principal Meridian



SCALE: 1"=60'

Basis of Bearings: Kansas coordinate system of 1983 south zone bearing of S88°11'57"W on the south line of the Southwest Quarter, Section 25, Township 27 South, Range 2 West of the 6th Principal Meridian.  
This plat is surveyed and platted on NAD83 using Kansas state plane south zone coordinates, modified to the surface, having a combined adjustment scale factor of 1.000120014401728

### LEGEND

- Date of Survey: 9/17/17
- △ = Section Corner Monument Found
  - = Found monument (see annotation for type)
  - = Set 3/8" rebar w/ MKEC CLS 39 id. cap
  - ⊕ = Benchmark
  - (M) = Measured
  - (P) = Platted
  - (D) = Described
  - (CM) = Calculated from Measurement
  - (CP) = Calculated from Plat
  - (CD) = Calculated from Described
  - Dmg. = Drainage
  - Util. = Utility
  - Sdwk. = Sidewalk
  - St. = Street
  - Esmt. = Easement
  - ① = Lot
  - ② = Block

### BENCHMARKS

- BM#1 Square Cut on east nose of center island, 50 feet west of 135th Street West and Onewood Street intersection.  
Elev.=1350.35 NAVD88
- BM#2 Square Cut on northeast corner curb inlet, east side of 135th Street West, 33 feet south of NW 1/4, Sec. 25, T27S, R2W of the 6th P.M.  
Elev.=1346.29 NAVD88

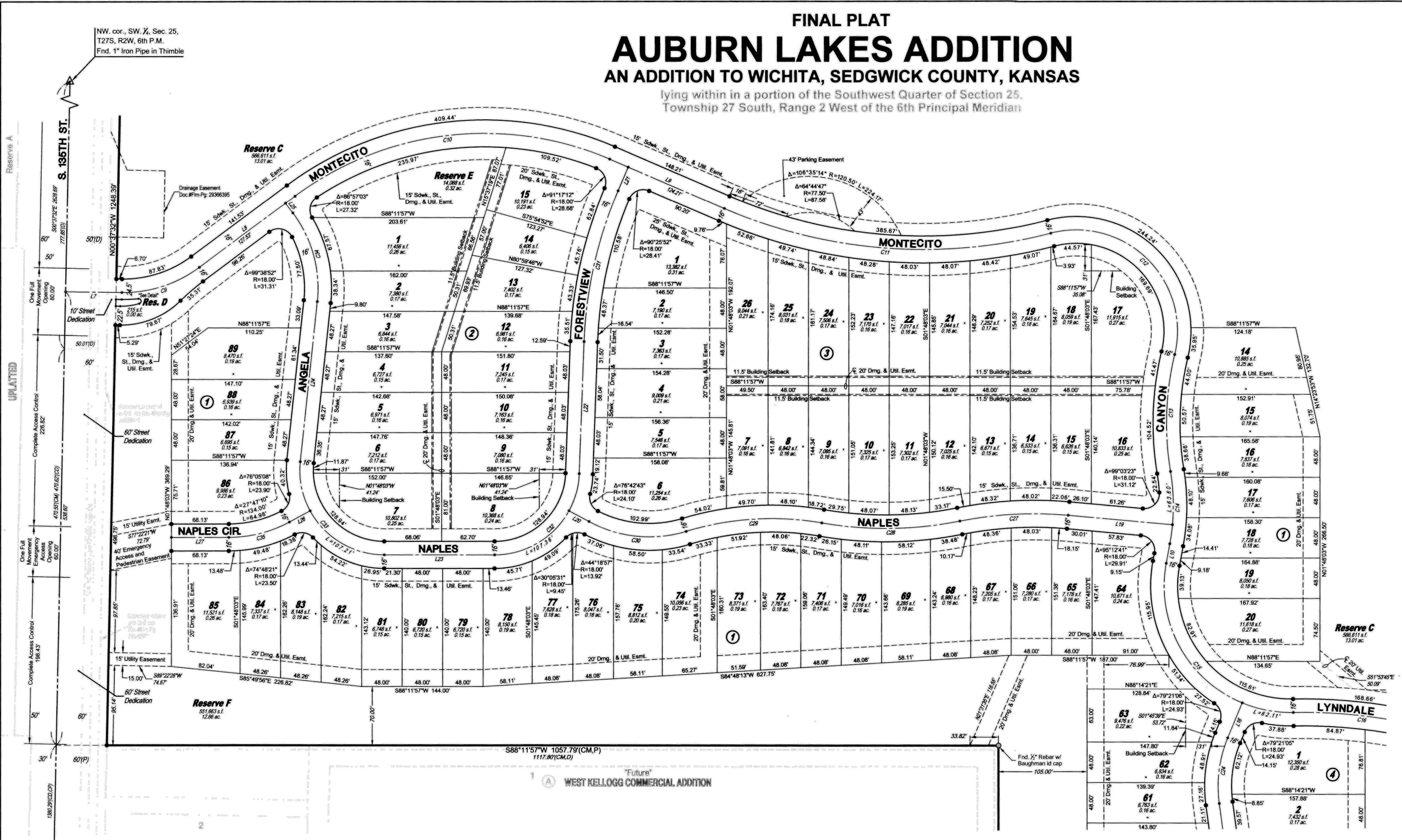
| LOT(S) inclusive | BLOCK | ELEVATION |
|------------------|-------|-----------|
| 14               | 1     | 1330.2    |
| 15-20            | 1     | 1327.9    |
| 89               | 1     | 1342.5    |
| 1                | 2     | 1341.0    |
| 15               | 2     | 1337.2    |
| 1                | 3     | 1337.2    |
| 17-26            | 3     | 1333.2    |
| 1-2              | 4     | 1329.2    |

| Line # | Length  | Direction   |
|--------|---------|-------------|
| L23    | 130.76' | S88°11'57"W |
| L24    | 190.96' | S04°14'31"W |
| L25    | 14.56'  | S88°32'36"W |
| L26    | 28.01'  | S59°37'28"W |
| L27    | 68.13'  | S88°11'57"W |

| Line # | Length  | Direction   |
|--------|---------|-------------|
| L7     | 66.80'  | N89°00'39"E |
| L8     | 141.53' | N51°27'24"E |
| L9     | 148.21' | S88°32'43"E |
| L10    | 23.60'  | S08°35'30"W |
| L16    | 44.98'  | N20°42'16"E |
| L19    | 124.05' | N86°37'11"W |
| L20    | 26.72'  | N63°18'46"W |
| L21    | 30.49'  | S21°27'17"W |
| L22    | 156.68' | S00°14'57"W |

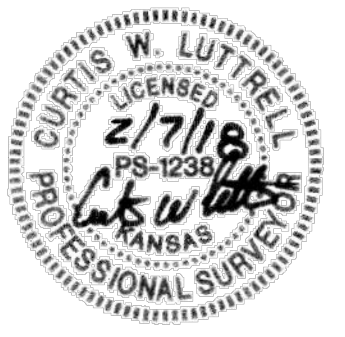
| Curve # | Length  | Radius  | Delta     | Chord Direction | Chord Length |
|---------|---------|---------|-----------|-----------------|--------------|
| C27     | 129.31' | 450.00' | 16°27'52" | S85°08'53"W     | 128.87'      |
| C28     | 164.99' | 450.00' | 21°00'27" | S87°25'11"W     | 164.07'      |
| C29     | 163.09' | 350.00' | 26°41'54" | S84°34'28"W     | 161.62'      |
| C30     | 119.02' | 150.00' | 45°27'44" | N86°02'38"W     | 115.92'      |
| C31     | 185.05' | 500.00' | 21°12'20" | S10°51'07"W     | 184.00'      |
| C32     | 153.50' | 100.00' | 87°57'00" | S44°13'27"W     | 138.87'      |
| C33     | 167.63' | 100.00' | 96°02'33" | N43°46'46"W     | 148.68'      |
| C34     | 112.01' | 150.00' | 42°47'07" | N17°09'03"W     | 109.43'      |
| C35     | 74.81'  | 150.00' | 28°34'29" | S73°54'43"W     | 74.04'       |

| Curve # | Length  | Radius  | Delta      | Chord Direction | Chord Length |
|---------|---------|---------|------------|-----------------|--------------|
| C9      | 98.32'  | 150.00' | 37°33'15"  | N70°14'02"E     | 96.57'       |
| C10     | 392.69' | 375.00' | 59°59'53"  | N81°27'21"E     | 374.99'      |
| C11     | 396.23' | 600.00' | 37°50'16"  | S87°27'51"E     | 389.07'      |
| C12     | 247.23' | 120.00' | 118°02'34" | S47°21'42"E     | 205.77'      |
| C13     | 139.61' | 350.00' | 22°51'17"  | S00°13'57"W     | 138.89'      |
| C14     | 86.34'  | 250.00' | 19°47'12"  | S01°18'06"E     | 85.91'       |
| C15     | 266.02' | 150.00' | 101°36'44" | S42°12'52"E     | 232.50'      |
| C16     | 164.28' | 600.00' | 15°41'17"  | S85°10'35"E     | 163.77'      |
| C24     | 79.44'  | 150.00' | 30°20'34"  | N05°31'59"E     | 78.51'       |



NW cor., SW 1/4, Sec. 25, T27S, R2W, 6th P.M.  
Fnd. 1" Iron Pipe in Thimble

SW cor., SW 1/4, Sec. 25, T27S, R2W, 6th P.M.  
Fnd. 3/8" Iron Pipe in Thimble



SUB2017-00050 Auburn Lakes Addition

UPDATED

