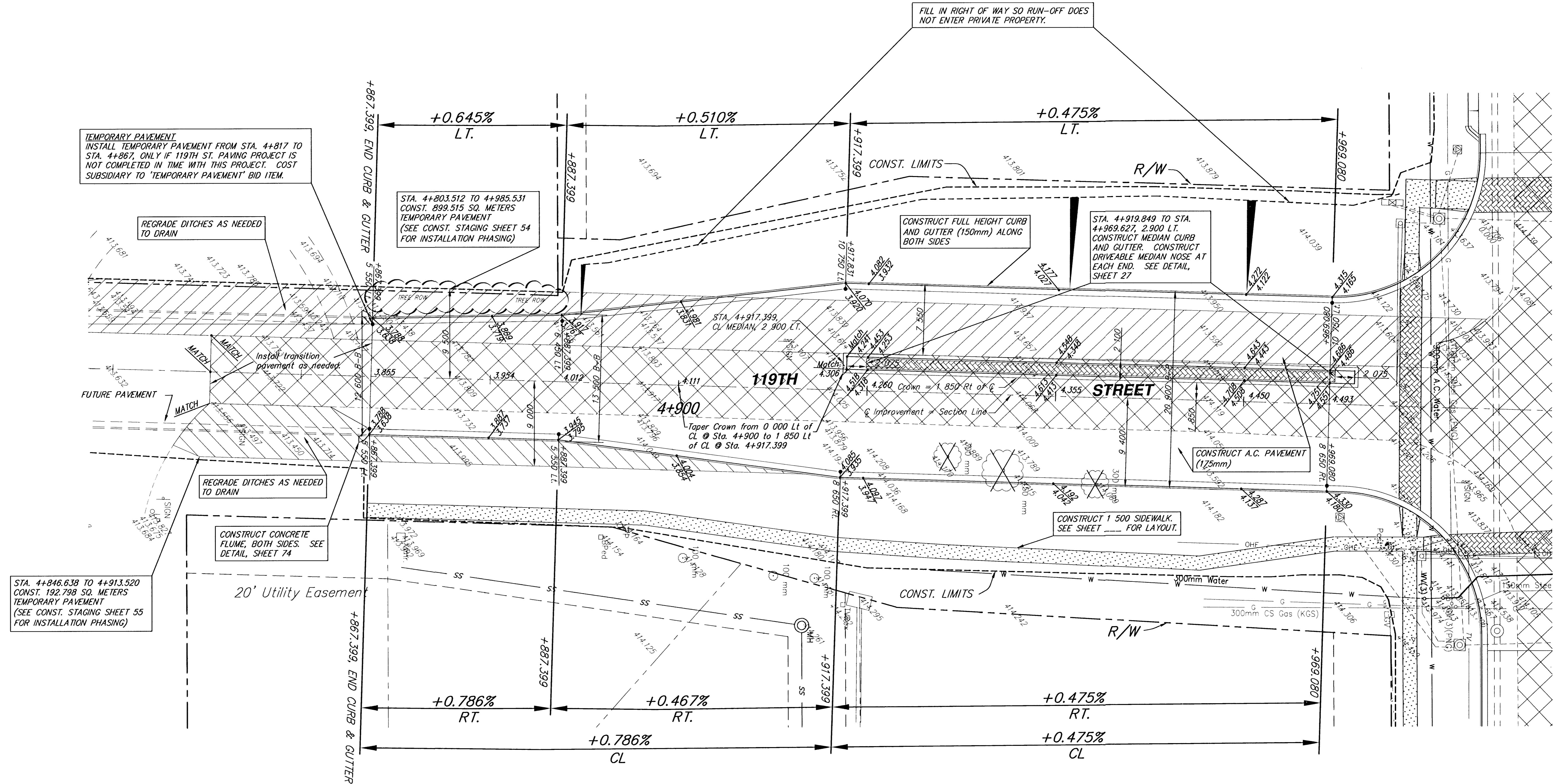


FHWA REGION NO.	STATE	PROJECT NUMBER	FISCAL YEAR	SHEET NUMBER	TOTAL SHEETS
7	KANSAS	87 N-0189-01	2001	20	105

DATE	BY	REFERENCES NOTED	REFERENCES CHECKED

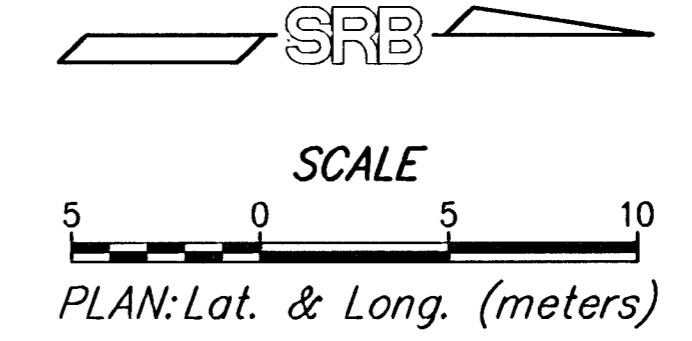


TEMPORARY PAVEMENT
INSTALL TEMPORARY PAVEMENT FROM STA. 4+817 TO STA. 4+867, ONLY IF 119TH ST. PAVING PROJECT IS NOT COMPLETED IN TIME WITH THIS PROJECT. COST SUBSIDIARY TO 'TEMPORARY PAVEMENT' BID ITEM.

STA. 4+803.512 TO 4+985.531
CONST. 899.515 SQ. METERS
TEMPORARY PAVEMENT
(SEE CONST. STAGING SHEET 54 FOR INSTALLATION PHASING)

STA. 4+919.849 TO STA. 4+969.627, 2.900 LT.
CONSTRUCT MEDIAN CURB AND GUTTER. CONSTRUCT DRIVEABLE MEDIAN NOSE AT EACH END. SEE DETAIL, SHEET 27

STA. 4+846.638 TO 4+913.520
CONST. 192.798 SQ. METERS
TEMPORARY PAVEMENT
(SEE CONST. STAGING SHEET 55 FOR INSTALLATION PHASING)



119th Street
STATION 4+860 TO STATION 4+969.080

SRB
224 NORTH MAIN WICHITA, KANSAS 67203
316-264-3008 FAX 264-4821
www.srb.com E-Mail: srb@srb.com

SAVOY, RUGGLES & BOHM, P.A.
ENGINEERING & SURVEYING

PROJECT NUMBER
472-83138

DESIGN	DATE	REVIEW	DATE	UTILITY	SRB JOB
TEB	MWS		May 31, 2001		1478T

20
105