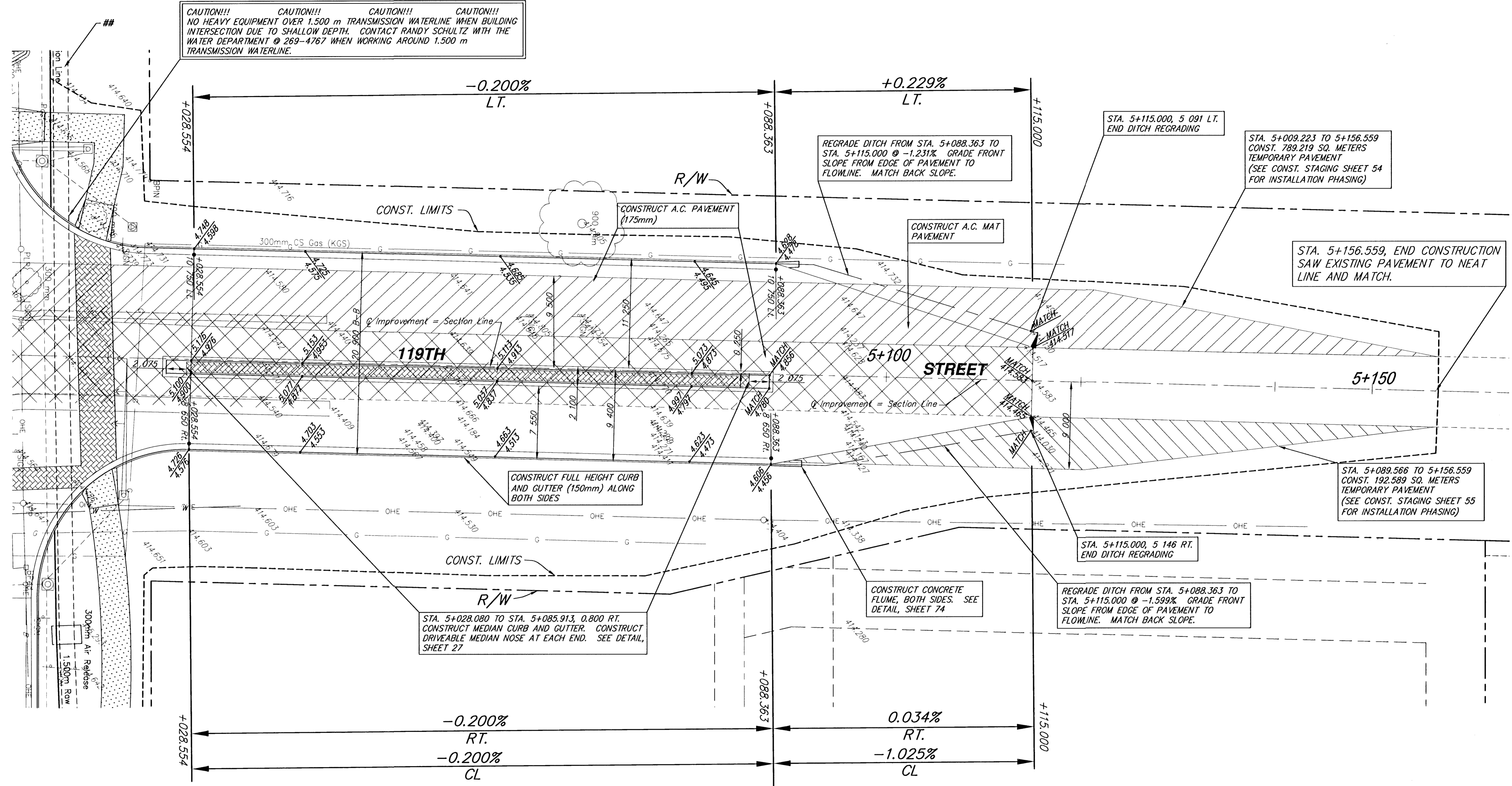


CAUTION!!! 1.500 m TRANSMISSION LINE FROM CHENEY RESERVOIR. SHALLOW DEPTH. CONTRACTOR TO MAINTAIN MINIMAL HEAVY EQUIPMENT TRAFFIC ACROSS LINE DURING CONSTRUCTION.

FHWA REGION NO.	STATE	PROJECT NUMBER	FISCAL YEAR	SHEET NUMBER	TOTAL SHEETS
7	KANSAS	87 N-0189-01	2001	21	105

DATE	BY	REFERENCES NOTED	REFERENCES CHECKED



CAUTION!!! CAUTION!!! CAUTION!!! CAUTION!!!
 NO HEAVY EQUIPMENT OVER 1.500 m TRANSMISSION WATERLINE WHEN BUILDING INTERSECTION DUE TO SHALLOW DEPTH. CONTACT RANDY SCHULTZ WITH THE WATER DEPARTMENT @ 269-4767 WHEN WORKING AROUND 1.500 m TRANSMISSION WATERLINE.

REGRADE DITCH FROM STA. 5+088.363 TO STA. 5+115.000 @ -1.231% GRADE FRONT SLOPE FROM EDGE OF PAVEMENT TO FLOWLINE. MATCH BACK SLOPE.

STA. 5+115.000, 5 091 LT. END DITCH REGRADING

STA. 5+009.223 TO 5+156.559 CONST. 789.219 SQ. METERS TEMPORARY PAVEMENT (SEE CONST. STAGING SHEET 54 FOR INSTALLATION PHASING)

STA. 5+156.559, END CONSTRUCTION SAW EXISTING PAVEMENT TO NEAT LINE AND MATCH.

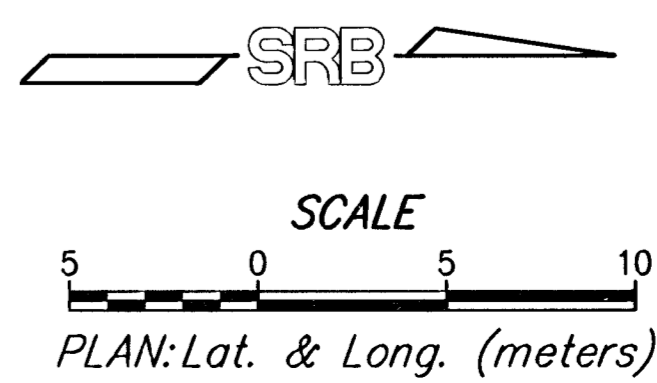
STA. 5+089.566 TO 5+156.559 CONST. 192.589 SQ. METERS TEMPORARY PAVEMENT (SEE CONST. STAGING SHEET 55 FOR INSTALLATION PHASING)

STA. 5+115.000, 5 146 RT. END DITCH REGRADING

REGRADE DITCH FROM STA. 5+088.363 TO STA. 5+115.000 @ -1.599% GRADE FRONT SLOPE FROM EDGE OF PAVEMENT TO FLOWLINE. MATCH BACK SLOPE.

STA. 5+028.080 TO STA. 5+085.913, 0.800 RT. CONSTRUCT MEDIAN CURB AND GUTTER. CONSTRUCT DRIVEABLE MEDIAN NOSE AT EACH END. SEE DETAIL, SHEET 27

CONSTRUCT CONCRETE FLUME, BOTH SIDES. SEE DETAIL, SHEET 74



119th Street
STATION 5+028.554 TO STATION 5+156.559

SRB 924 NORTH MAIN 318-284-8008
 WICHITA, KANSAS 67203 FAX 318-284-4821
 www.srb.com E-Mail: srb@srbi.com

SAVOY, RUGGLES & BOHM, P.A.
 ENGINEERING & SURVEYING

PROJECT NUMBER
472-83138

DRAWN	DESIGN	REVIEW	DATE	UTILITY	SRB JOB
TEB	MWS		May 31, 2001		1478T

21
105