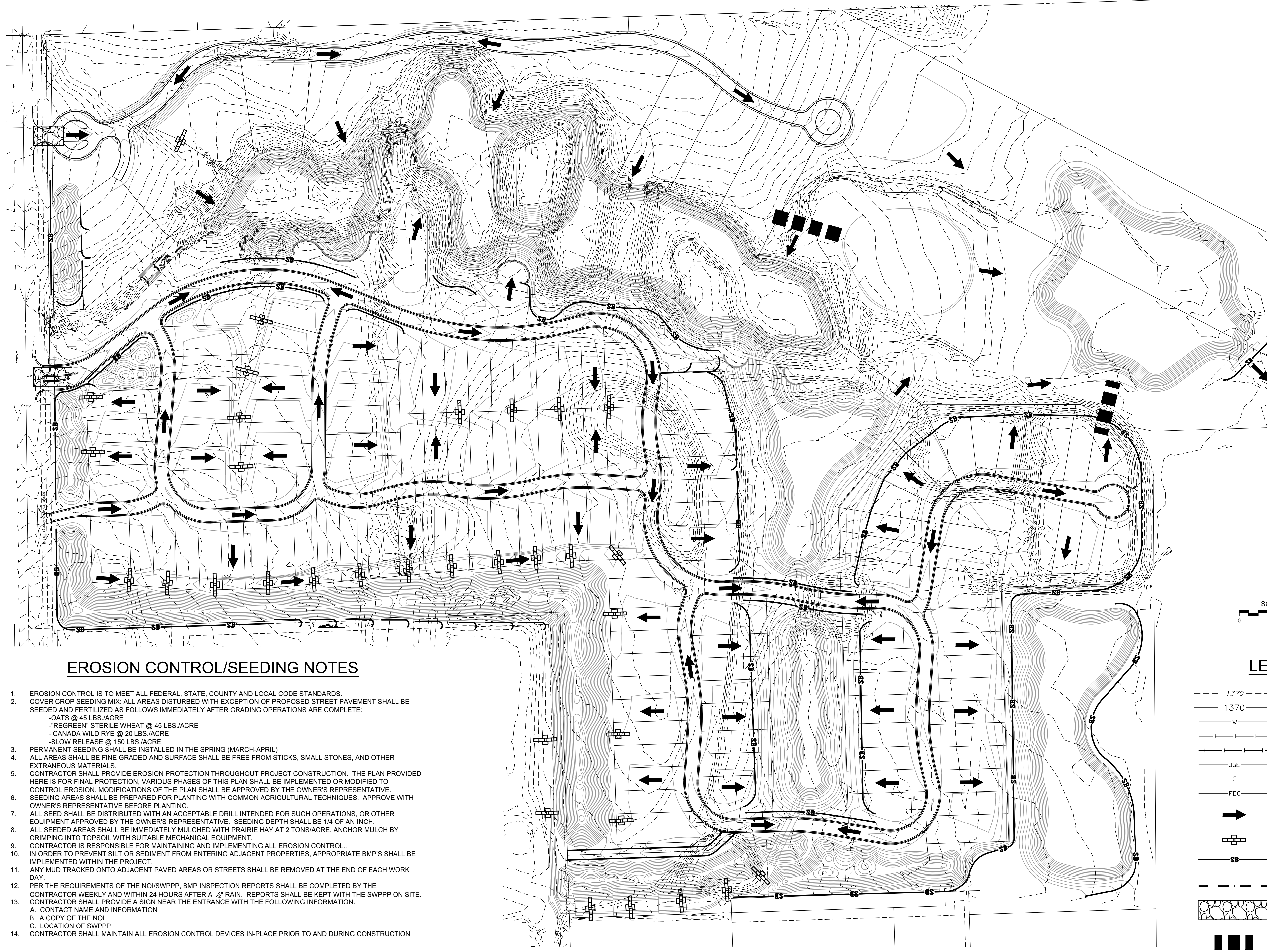


PLOTTED: Friday, June 15, 2018 @ 10:38AM

J:\PROJECTS\2018\1601010221_PERFECTION_AUBURN_LAKES_16221 CAD\SHIT\505 CIVIL\GRD\16221-05-1201.DWG



GRADING CHANGES DUE TO GROUNDWATER ELEVATION

EROSION CONTROL/SEEDING NOTES

1. EROSION CONTROL IS TO MEET ALL FEDERAL, STATE, COUNTY AND LOCAL CODE STANDARDS.
2. COVER CROP SEEDING MIX: ALL AREAS DISTURBED WITH EXCEPTION OF PROPOSED STREET PAVEMENT SHALL BE SEEDED AND FERTILIZED AS FOLLOWS IMMEDIATELY AFTER GRADING OPERATIONS ARE COMPLETE:
 - OATS @ 45 LBS./ACRE
 - "REGREEN" STERILE WHEAT @ 45 LBS./ACRE
 - CANADA WILD RYE @ 20 LBS./ACRE
 - SLOW RELEASE @ 150 LBS./ACRE
3. PERMANENT SEEDING SHALL BE INSTALLED IN THE SPRING (MARCH-APRIL)
4. ALL AREAS SHALL BE FINE GRADED AND SURFACE SHALL BE FREE FROM STICKS, SMALL STONES, AND OTHER EXTRANEOUS MATERIALS.
5. CONTRACTOR SHALL PROVIDE EROSION PROTECTION THROUGHOUT PROJECT CONSTRUCTION. THE PLAN PROVIDED HERE IS FOR FINAL PROTECTION. VARIOUS PHASES OF THIS PLAN SHALL BE IMPLEMENTED OR MODIFIED TO CONTROL EROSION. MODIFICATIONS OF THE PLAN SHALL BE APPROVED BY THE OWNER'S REPRESENTATIVE.
6. SEEDING AREAS SHALL BE PREPARED FOR PLANTING WITH COMMON AGRICULTURAL TECHNIQUES. APPROVE WITH OWNER'S REPRESENTATIVE BEFORE PLANTING.
7. ALL SEED SHALL BE DISTRIBUTED WITH AN ACCEPTABLE DRILL INTENDED FOR SUCH OPERATIONS, OR OTHER EQUIPMENT APPROVED BY THE OWNER'S REPRESENTATIVE. SEEDING DEPTH SHALL BE 1/4 OF AN INCH.
8. ALL SEEDED AREAS SHALL BE IMMEDIATELY MULCHED WITH PRAIRIE HAY AT 2 TONS/ACRE. ANCHOR MULCH BY CRIMPING INTO TOPSOIL WITH SUITABLE MECHANICAL EQUIPMENT.
9. CONTRACTOR IS RESPONSIBLE FOR MAINTAINING AND IMPLEMENTING ALL EROSION CONTROL.
10. IN ORDER TO PREVENT SILT OR SEDIMENT FROM ENTERING ADJACENT PROPERTIES, APPROPRIATE BMP'S SHALL BE IMPLEMENTED WITHIN THE PROJECT.
11. ANY MUD TRACKED ONTO ADJACENT PAVED AREAS OR STREETS SHALL BE REMOVED AT THE END OF EACH WORK DAY.
12. PER THE REQUIREMENTS OF THE NOI/SWPPP, BMP INSPECTION REPORTS SHALL BE COMPLETED BY THE CONTRACTOR WEEKLY AND WITHIN 24 HOURS AFTER A 1/2" RAIN. REPORTS SHALL BE KEPT WITH THE SWPPP ON SITE.
13. CONTRACTOR SHALL PROVIDE A SIGN NEAR THE ENTRANCE WITH THE FOLLOWING INFORMATION:
 - A. CONTACT NAME AND INFORMATION
 - B. A COPY OF THE NOI
 - C. LOCATION OF SWPPP
14. CONTRACTOR SHALL MAINTAIN ALL EROSION CONTROL DEVICES IN-PLACE PRIOR TO AND DURING CONSTRUCTION

LEGEND

- - - 1370 - - - EXIST. CONTOUR
- 1370 — PROP. CONTOUR
- W — WATERLINE
- S — SANITARY SEWER
- S — STORMWATER SEWER
- UGE — UNDERGROUND ELECTRICAL
- G — GAS LINE
- FOC — FIBER OPTIC CABLE
- ➔ FLOW ARROW
- ⊕ DITCH CHECK (33)
- SB — SILT FENCE (APPROX. 9,175 L.F.)
- - - LIMITS OF GRADING
- ◻ STABILIZED CONSTRUCTION ENTRANCE
- ▬▬▬ CONSTRUCTION/HAUL ROUTE



GRADING PLANS FOR
AUBURN LAKES ADDITION
PART A

©2018 MKEC Engineering All Rights Reserved www.mkec.com
These drawings and their contents, including, but not limited to, all concepts, designs, & ideas are the exclusive property of MKEC Engineering (MKEC), and may not be used or reproduced in any way without the express consent of MKEC.

EROSION CONTROL PLAN

PROJECT NO.	468-85308	
DATE	MAY 2018	
SCALE	1" = 100'	
DESIGNED	DRAWN	CHECKED
DFL	ABW	DFL
NO.	REVISION	DATE
1	GRADING CHANGES	06-22-18