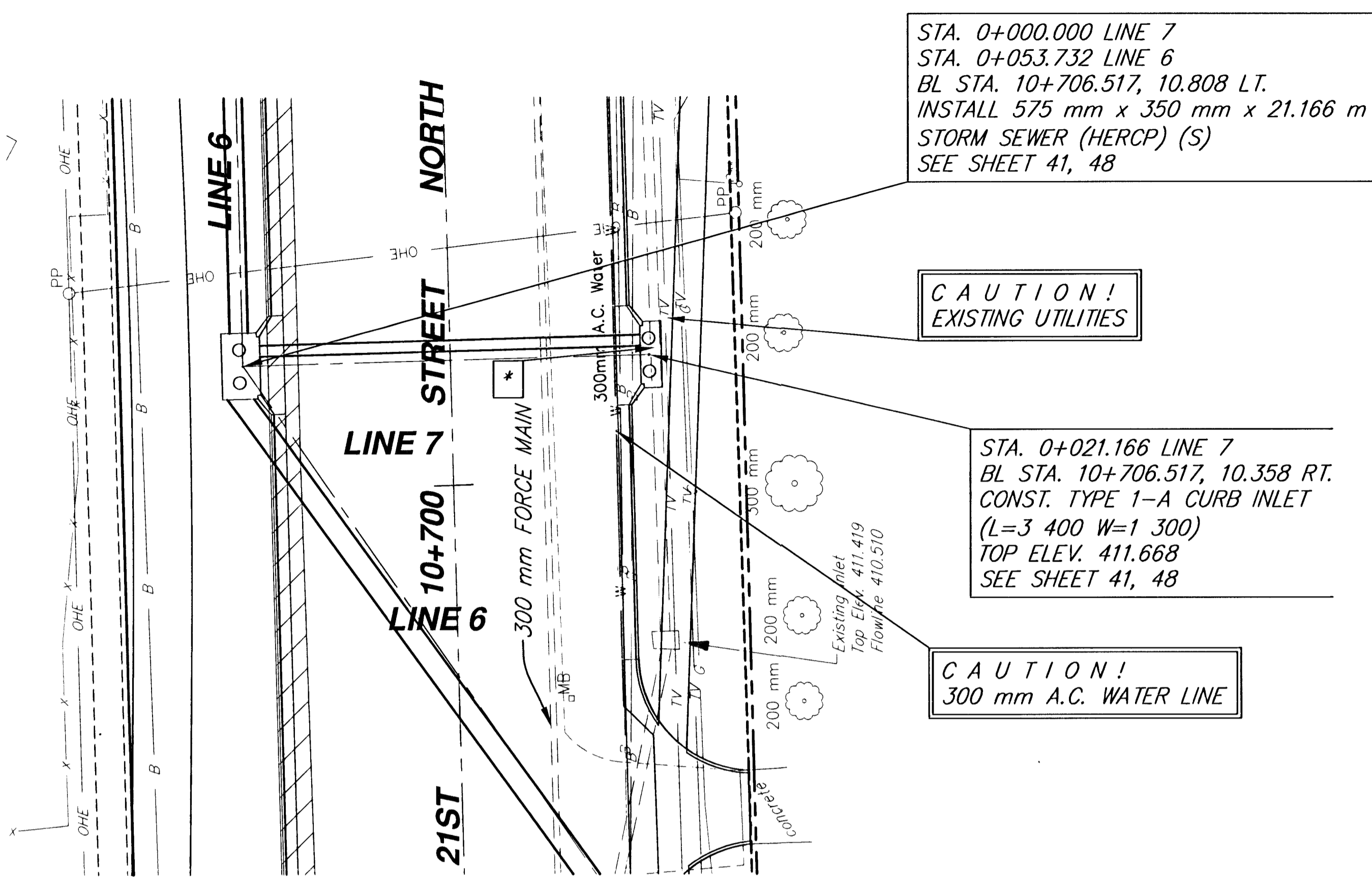


FHWA REGION NO.	STATE	PROJECT NUMBER	FISCAL YEAR	SHEET NUMBER	TOTAL SHEETS
7	KANSAS	87 N-0189-01	2001	36	105

REFERENCES NOTED	DATE



STA. 0+000.000 LINE 7  
 STA. 0+053.732 LINE 6  
 BL STA. 10+706.517, 10.808 LT.  
 INSTALL 575 mm x 350 mm x 21.166 m  
 STORM SEWER (HERCP) (S)  
 SEE SHEET 41, 48

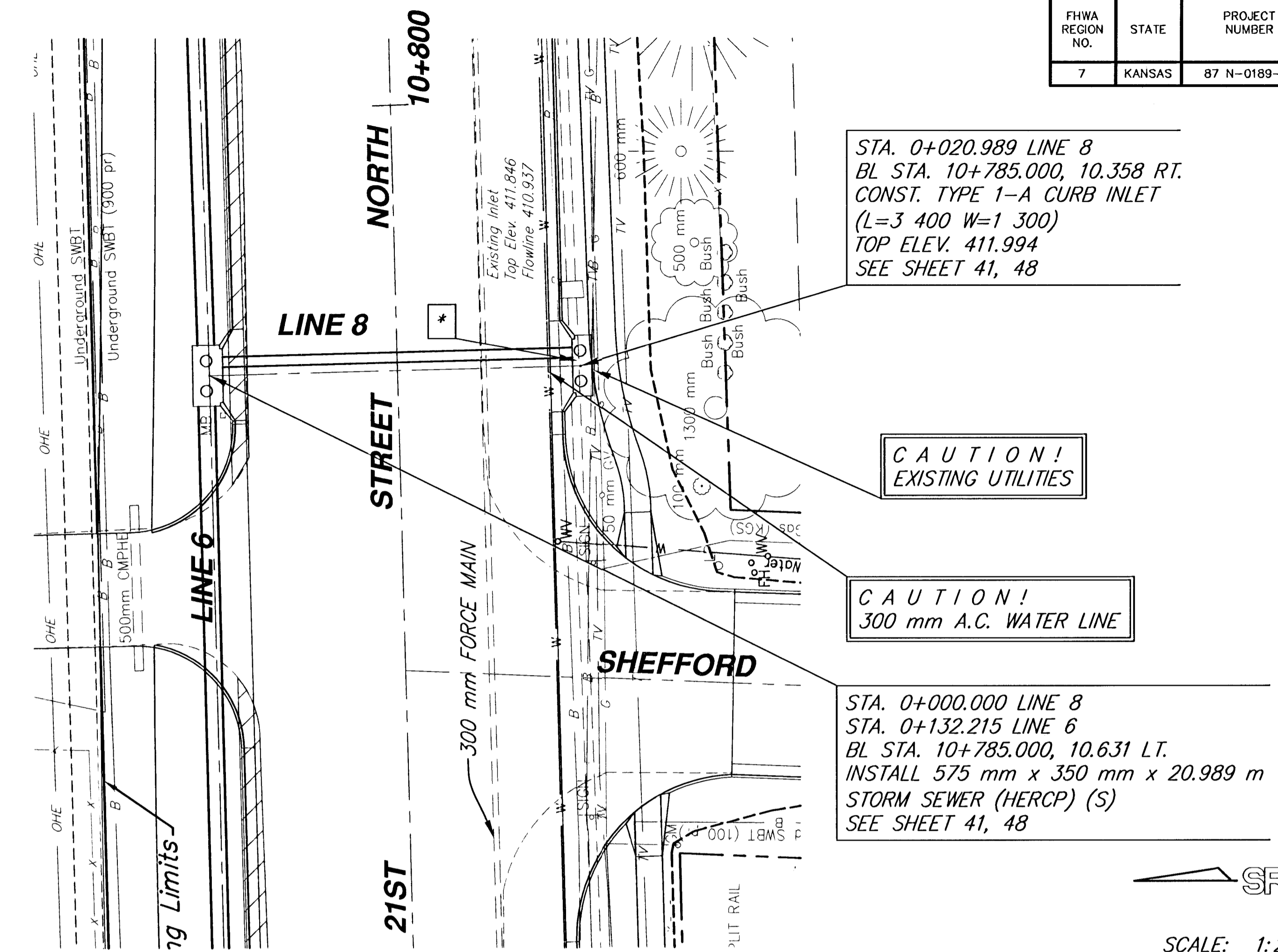
CAUTION!  
 EXISTING UTILITIES

STA. 0+021.166 LINE 7  
 BL STA. 10+706.517, 10.358 RT.  
 CONST. TYPE 1-A CURB INLET  
 (L=3 400 W=1 300)  
 TOP ELEV. 411.668  
 SEE SHEET 41, 48

CAUTION!  
 300 mm A.C. WATER LINE

\* WHERE NEW STORM SEWER PASSES THROUGH OLD SYSTEM, PLUG OPEN ENDS OF OLD PIPE. PIPE PLUGS BID SUBSIDIARY TO NEW STORM SEWER SYSTEM.

SCALE: 1:200 HORIZ.  
 1:20 VERT.



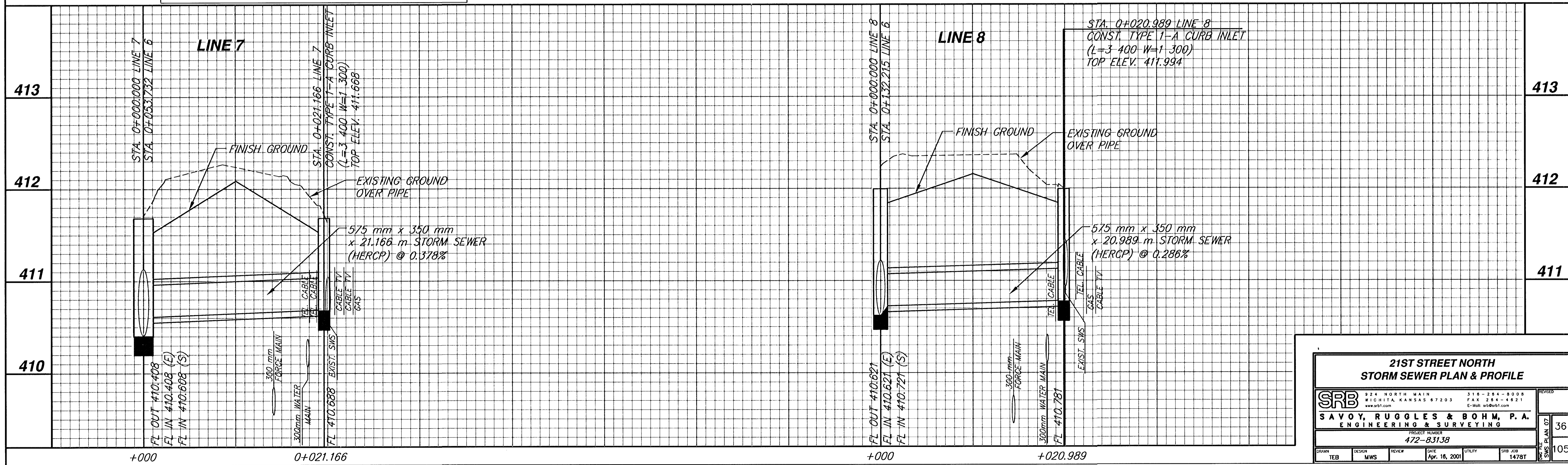
STA. 0+020.989 LINE 8  
 BL STA. 10+785.000, 10.358 RT.  
 CONST. TYPE 1-A CURB INLET  
 (L=3 400 W=1 300)  
 TOP ELEV. 411.994  
 SEE SHEET 41, 48

CAUTION!  
 EXISTING UTILITIES

CAUTION!  
 300 mm A.C. WATER LINE

STA. 0+000.000 LINE 8  
 STA. 0+132.215 LINE 6  
 BL STA. 10+785.000, 10.631 LT.  
 INSTALL 575 mm x 350 mm x 20.989 m  
 STORM SEWER (HERCP) (S)  
 SEE SHEET 41, 48

SCALE: 1:200 HORIZ.  
 1:20 VERT.



**21ST STREET NORTH  
 STORM SEWER PLAN & PROFILE**

**SRB** 924 NORTH MAIN 318-264-8008  
 WICHITA, KANSAS 67203 FAX 318-264-4821  
 www.srb1.com E-Mail: srb@srb1.com

**SAVOY, RUGGLES & BOHM, P.A.**  
 ENGINEERING & SURVEYING

PROJECT NUMBER  
**472-83138**

DESIGN TEB	REVIEW MWS	DATE Apr. 16, 2001	UTILITY	SRB JOB 1478T
---------------	---------------	-----------------------	---------	------------------

REVISED  
 36  
 105