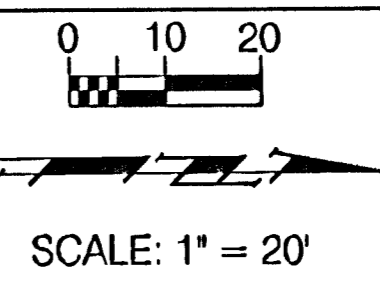
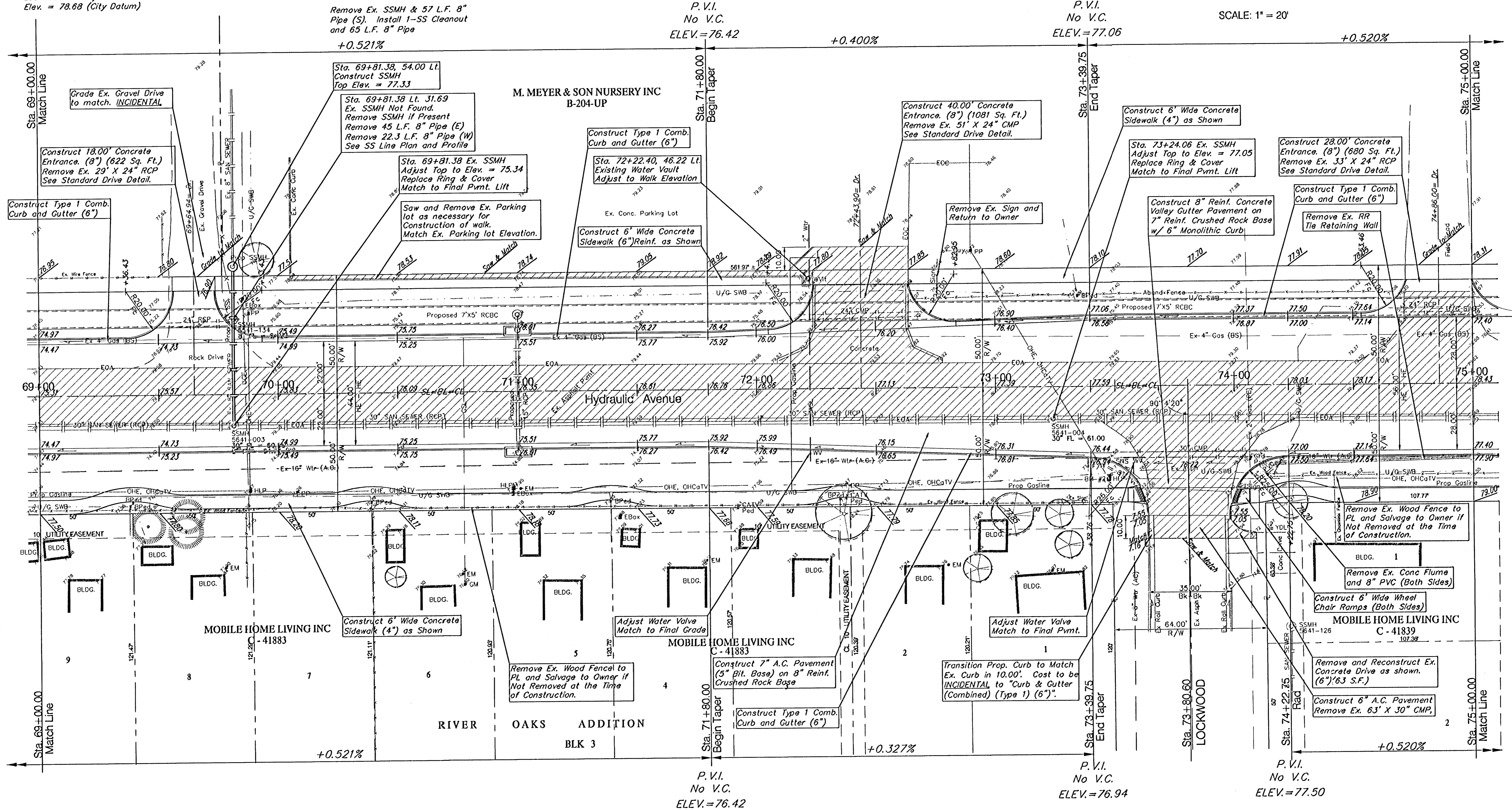


**BENCHMARKS:**

BM #2 - RR Spike in West face of HLP, Southeast Corner of Lockwood and Hydraulic. Sta. 73+47.2, 38.2' Rt. Elev. = 78.68 (City Datum)



FHWA REGION NO.	STATE	PROJECT NO.	FISCAL YEAR	SHEET NO.	TOTAL SHEETS
7	KANSAS	87N-0303-01	2003	16	143



**Note:**  
Trees/Shrubs to be removed are marked thus:

**Note:**  
Pavement, Sidewalks, and Etc. To Be Removed Are Indicated By:

PROJECT NUMBER 472-83902		SHEET NAME PAV05		ENGINEERING DIRECTORY F:\Eng\Hydraulic_ph2\PAV	
DESIGN JFB	DRAWN TCA	APPROVED JFB/KK	DATE Aug 03	SCALE 1"=20'	BAUGHMAN NO 99-09-E451

STREET & SWS IMPROVEMENTS  
**PAVING PLAN**  
HYDRAULIC AVE PAVING - SOUTH OF 57th STREET SOUTH TO 47th STREET SOUTH

**BAUGHMAN COMPANY, P.A.**  
ENGINEERING, SURVEYING, & PLANNING  
318-282-1271 • 315 ELLIS • WICHITA, KANSAS 67211

SHEET  
OF  
16  
143