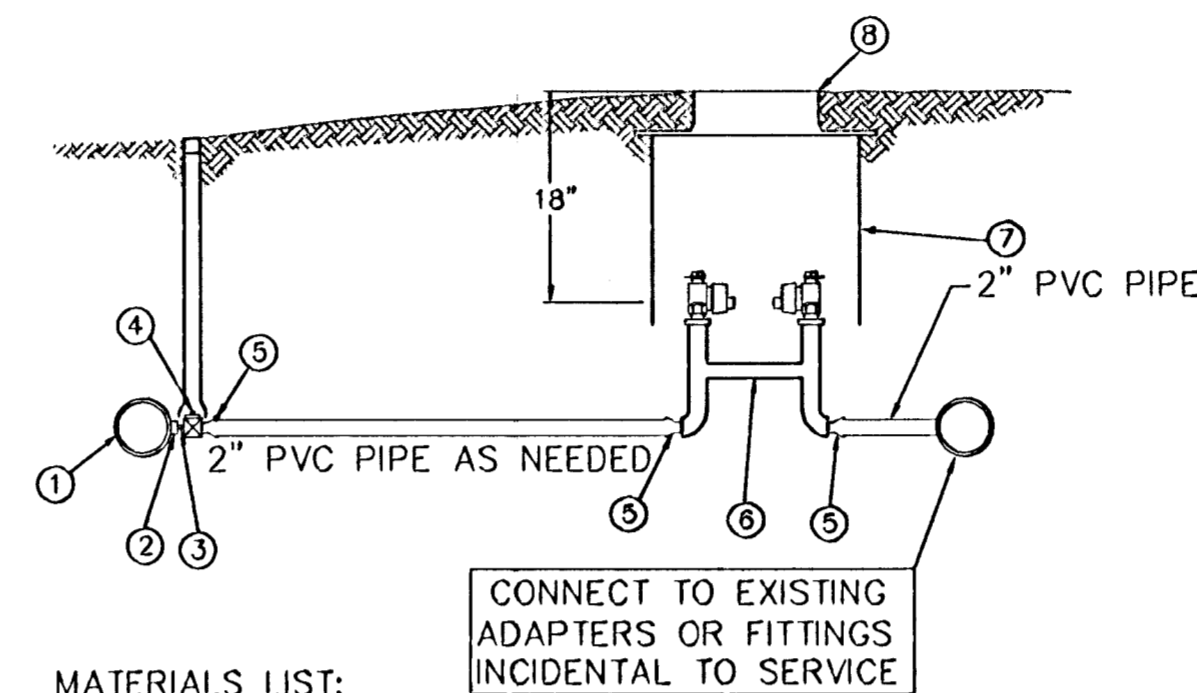


## Water Meter Adjustments Table

Address	B.L. Sta.	Ex. Offset	New Offset	Status	Remarks	Meter No.
5363 Hydraulic	77+00.36	39.32 Lt	--	--	--	
5363 Hydraulic	77+04.24	38.49 Lt	--	--	--	
5335 Hydraulic	77+97.18	40.61 Lt	--	--	--	
5316 Hydraulic	80+98.72	45.73 Rt	--	--	--	
5300 Hydraulic	82+38.77	46.24 Rt	--	--	--	
5244 Hydraulic	83+84.60	40.67 Rt	--	--	--	
5238 Hydraulic	83+98.01	42.23 Rt	--	--	--	
5239 Hydraulic	84+53.29	38.27 Lt	--	--	--	
5225 Hydraulic	85+71.40	36.25 Lt	--	--	--	
5224 Hydraulic	86+58.14	81.62 Rt	--	--	--	
5211 Hydraulic	86+61.27	37.93 Lt	--	--	--	
5207 Hydraulic	87+30.73	37.18 Lt	--	--	--	
5204 Hydraulic	88+43.97	28.88 Rt	--	--	--	
5157 Hydraulic	90+58.24	38.66 Lt	--	--	--	
5170 Hydraulic	91+02.26	43.93 Rt	--	--	--	
5170 Hydraulic	91+08.01	41.99 Rt	--	--	--	
5152 Hydraulic	92+41.53	41.74 Rt	--	--	--	
5152 Hydraulic	92+44.24	41.56 Rt	--	--	--	
4931 Hydraulic	103+54.86	43.70 Lt	--	--	--	
1723 Fairhaven	105+83.41	39.61 Rt	--	--	--	
1700 Fairhaven	108+36.08	41.22 Rt	--	--	--	
4907 Hydraulic	108+40.39	37.59 Lt	--	--	--	
4905 Hydraulic	109+63.97	33.87 Lt	--	--	--	
4849 Hydraulic	110+43.24	35.64 Lt	--	--	--	
4830 Hydraulic	111+60.12	42.23 Rt	--	--	--	
4835 Hydraulic	111+80.17	36.17 Lt	--	--	--	
4830 Hydraulic	112+51.01	42.53 Rt	--	--	--	
4825 Hydraulic	113+01.30	35.22 Lt	--	--	--	
4808 Hydraulic	113+69.48	32.68 Rt	--	--	--	
4808 Hydraulic	113+72.00	34.61 Rt	--	--	--	



**MATERIALS LIST:**

- EXISTING WATER MAIN, PIPE DIAMETER="D"
- "D" x 2" BRASS SADDLE
- 2" x 3" BRASS NIPPLE
- 2" CURBSTOP AY MCDONALD, FORD B11-777, MUELLER 300 B20283 (WITH STANDARD VALVE BOX)
- 2" F PVC TO MIPT ADAPTER FORD C87-77
- 2" CUSTOM SETTER W/BYPASS FORD VV7724B1177
- 30" WHITE PVC METER BOX - 24" HIGH, SMOOTH INSIDE, RIBBED OUTSIDE, NO NOTCHES
- 30" x 20" MONITOR COVER WITH 20" LID WITHOUT LOCK FORD MC30LL

### 2" CUSTOM SET & SERVICE

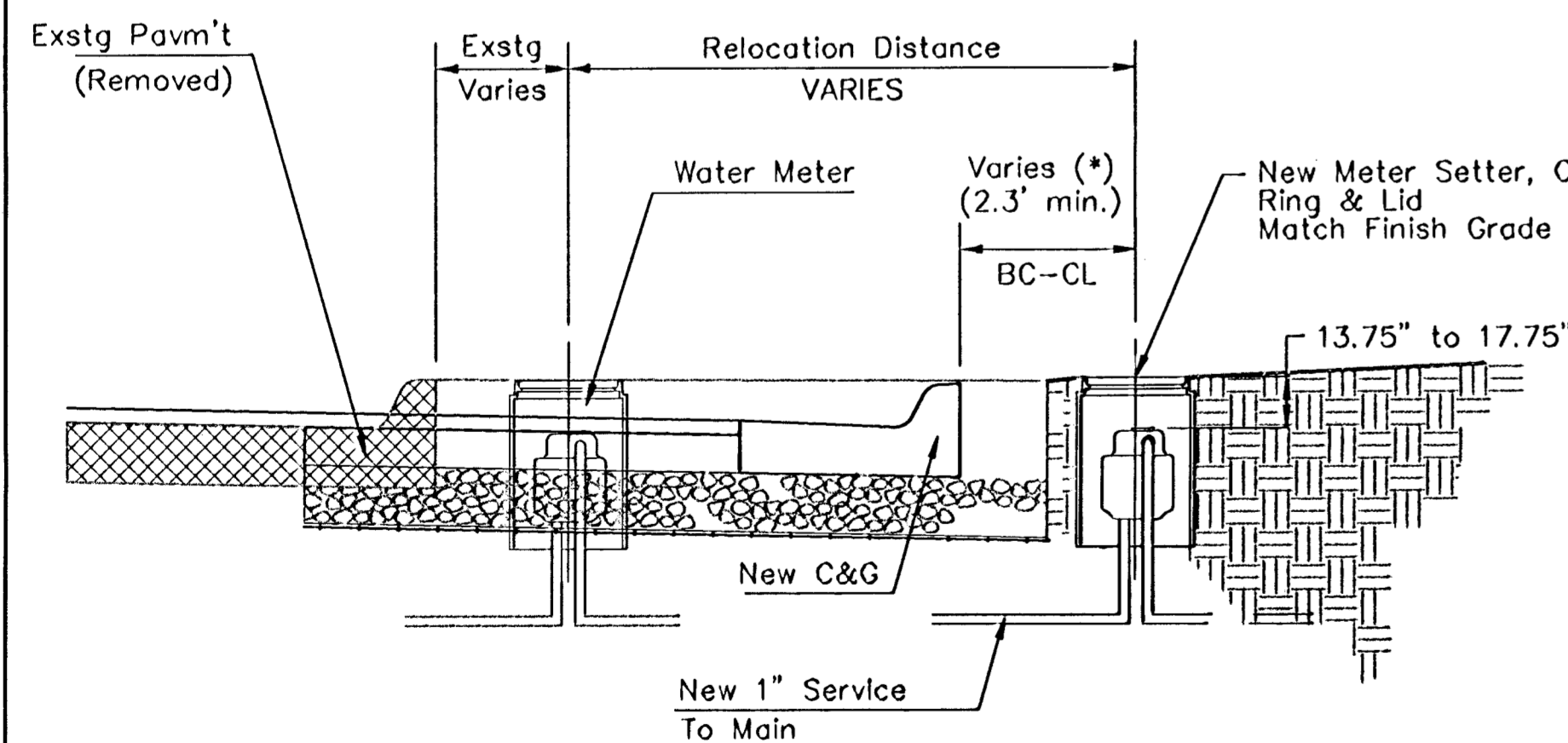
**Recap. of Quantities (100% Non-Participating)**

Bid Item	Quantity	Unit
Water System Improvements	1	L.S.

### Water System Quantities (For Information Only)

Bill of Materials	Quantity	Unit
WL. Pipe 2 in	23	ft
DICL SJ Pipe 4 in	8.46	ft
DICL SJ Pipe 6 in	36.00	ft
DICL SJ Pipe 8 in	155.83	ft
DICL SJ Pipe 16 in	275.12	ft
Anch Butterfly Valve Assembly 16 in	1	EA.
Custom Set & Service 2 in	1	EA.
Fire Hydrant Adjust	5	EA.
Fire Hydrant Remove & Reinstall Existing	2	EA.
Air Release Assembly	2	EA.
Tapping Valve Assy 4 in ( By City of Wichita Wtr. Dept.)	1	EA.
Tapping Valve Assy 6 in ( By City of Wichita Wtr. Dept.)	2	EA.
Tapping Valve Assy 8 in ( By City of Wichita Wtr. Dept.)	3	EA.
Tapping Sleeve (4" x 4")( By City of Wichita Wtr Dept.)	1	EA.
Tapping Sleeve (8" x 6")( By City of Wichita Wtr Dept.)	1	EA.
Tapping Sleeve (16" x 6")( By City of Wichita Wtr Dept.)	1	EA.
Tapping Sleeve (16" x 8")( By City of Wichita Wtr Dept.)	3	EA.
Relocate & Re-install Water Service (Short)	5	EA.
Relocate & Re-install Water Service (Long)	13	EA.
R/W Clearing & Site Preparation	1	L.S.
Traffic Control	1	L.S.

### All Water Services to be Completely Replaced with 1" or greater.

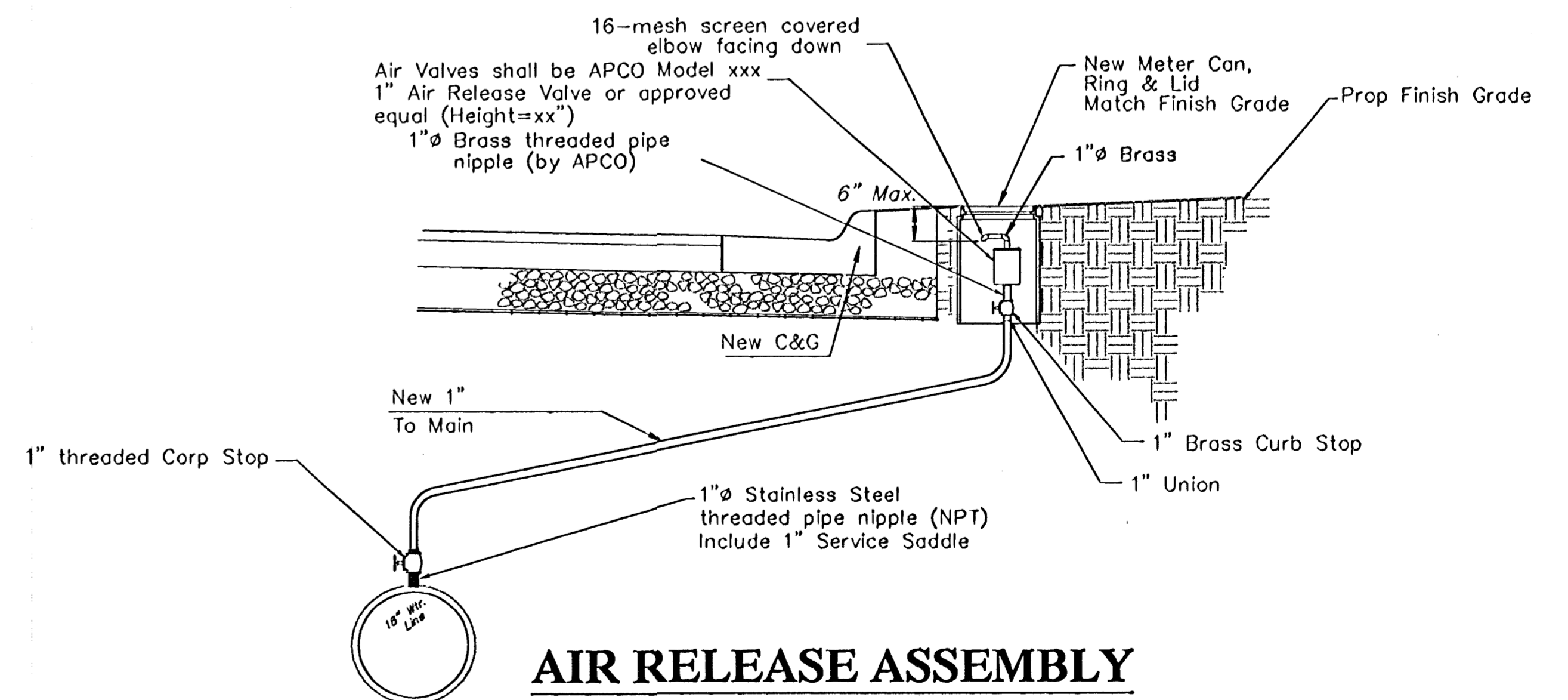


(\*) Relocation of all water meters in conflict with construction of this project will be accomplished in conjunction with construction. Location of meter(s) will be typically set at least 2.3' from the back of new curbline to the centerline of meter box unless otherwise as directed by the Field Engineer.

The top of the meter box to be field set typically to match finish grade elevations unless otherwise as directed by the Field Engineer.

Replace meter setter, can, ring & lid. Existing 3/4" Copper Setter may be reinstalled upon Engineer's Approval or replaced with 1" Copper Setter. All work and materials required is to be INCIDENTAL to the quantity item "Relocate & Re-install Water Service (EA.)"

### TYPICAL WATER METER INSTALLATION DETAIL



### AIR RELEASE ASSEMBLY

PROJECT NUMBER 448-89923	SHEET NAME Wmtables	ENGINEERING DIRECTORY P:Eng/Hydraulic Pb 2/Wtr
DESIGN TA	DRAWN TA	APPROVED JFB
DATE March 04	SCALE None	BAUGHMAN NO 99-09-E451

CAPITAL IMPROVEMENT PROJECT  
**WATER LINE IMPROVEMENTS**  
**WATER SYSTEM TABLES**  
HILLSIDE IMPROVEMENTS

**BAUGHMAN COMPANY, P.A.**  
ENGINEERING, SURVEYING, & PLANNING  
316-262-7271 • 315 ELLIS • WICHITA, KANSAS 67211