

PLOTTED: Tuesday, June 12, 2018 @ 12:08PM
 I:\PROJECTS\2017\170101043_LANES_STEEPLE_BAY_17143_CADD\SHD\01_GENERAL\TITLE\HEETS\17143-05-1000.DWG

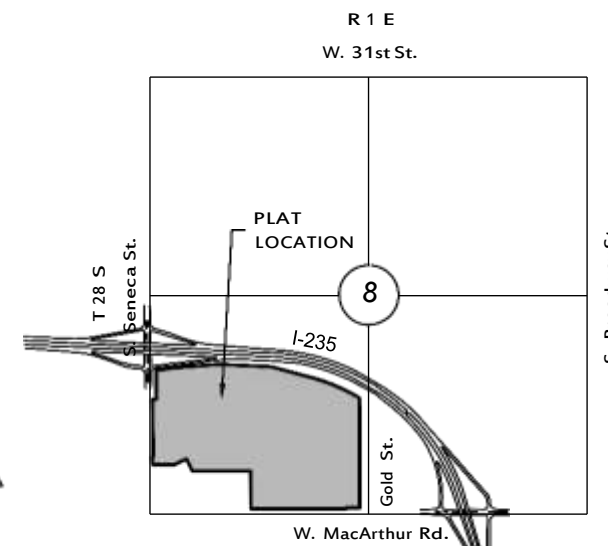
STORMWATER DRAIN 437 STEEPLE BAY

AN ADDITION TO THE CITY OF WICHITA
SEDGWICK COUNTY, KANSAS

PROJECT NO. 468-85318

GARY L. JANZEN, P.E. - CITY ENGINEER

OCA 751580

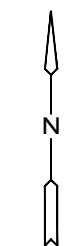


VICINITY MAP

No Scale

INDEX TO DRAWINGS

SHEET NO.	DESCRIPTION
01	TITLE SHEET
02	GRADING DETAILS
03	PAVING DETAILS
04	OVERALL DEMOLITION PLAN
05-08	EXIST. CONDITIONS & DEMO PLANS
09	OVERALL GRADING PLAN
10-14	GRADING PLANS
15	EROSION CONTROL PLAN
16	SEEDING DETAILS
17-18	BUBBLE MAP
19-23	BMP SHEETS
24-25	FINAL PLAT



SCALE: 1" = 150'

EARTHWORK SUMMARY

EXCAVATION 228,500 C.Y.
 *COMPACTED FILL (95) 226,400 C.Y.
 EXCESS EXCAVATION 2,100 C.Y.
 (TO BE STOCKPILED FOR FUTURE PAVING PROJECT)

* 25 SHRINKSWELL FACTOR ADDED
 EXCESS MATERIAL TO BE PLACED & COMPACTED ON SITE.
 LOCATION DETERMINED BY ENGINEER/OWNER'S DIRECTION

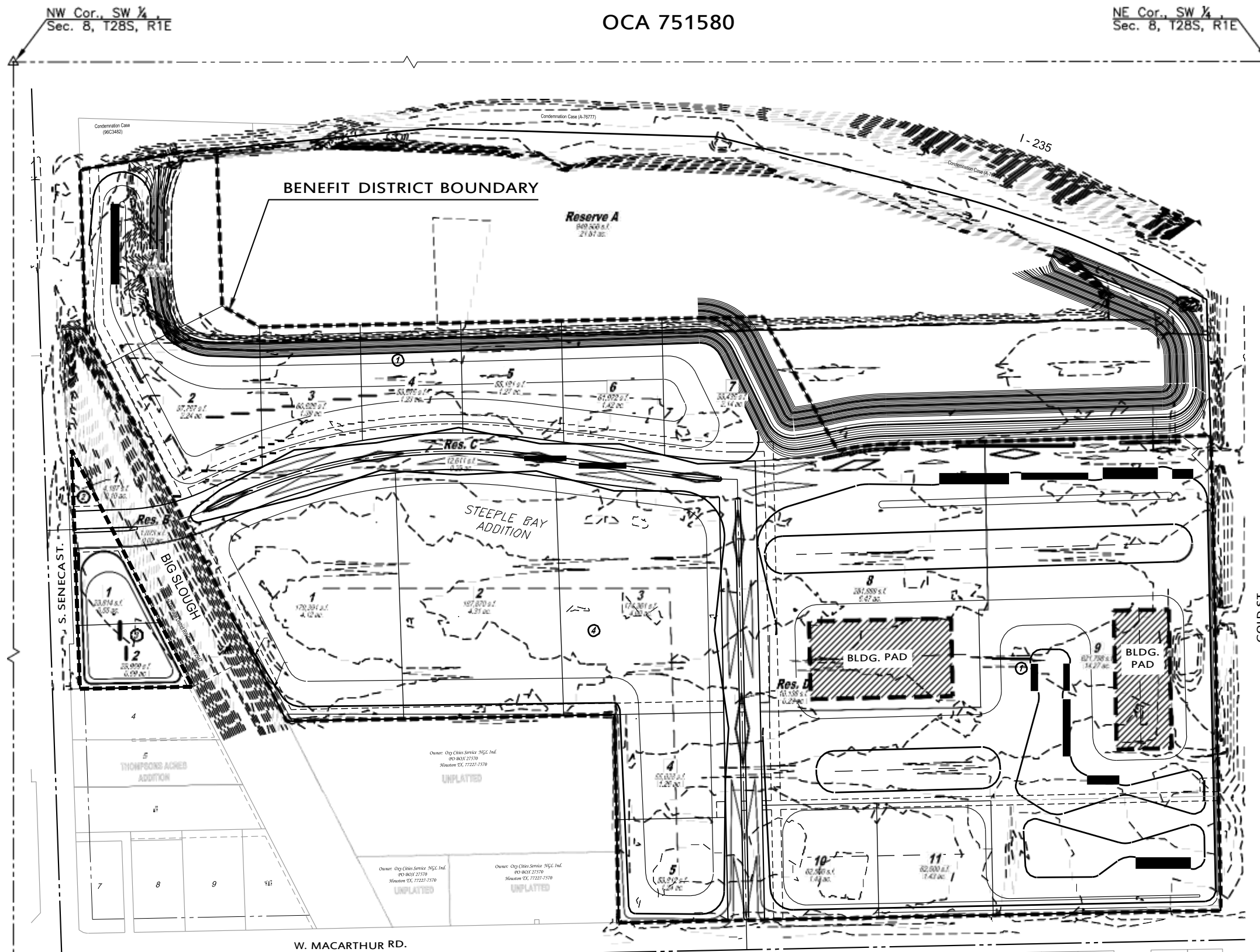
DATUM

1. THE PROJECT HORIZONTAL DATUM IS BASED ON THE NAD83, KANSAS STATE PLANE COORDINATE SYSTEM, SOUTH ZONE, (US SURVEY FEET DEFINITION), WITH A COMBINED ADJUSTMENT FACTOR (CAF) OF 1.0001200144.
 ALL COORDINATES AND DIMENSIONS SHOWN ON THESE PLANS ARE MODIFIED TO GROUND VALUES.

THE FOLLOWING EQUATIONS CAN BE USED FOR CONVERSION:

Ground Coordinates to State Plane Coordinates = Ground X 1 CAF
 State Plane Coordinates to Ground Coordinates = State Plane X CAF

2. THE VERTICAL DATUM USED IS NAVD88.



CONTROL POINTS

PNT	NORTH	EAST	ELEV.	DESCR.
5	1662645.01	1647546.43	1276.58	SC 34" PIPETHIMBLE
3016	1662591.37	1644902.05	1279.60	SC 58 PIPE

BENCHMARK

North end of sanitary sewer manhole on west side of Gold St., 700 feet north of the intersection of Gold St. and MacArthur Rd., 6 feet north of the north edge of access drive going west to mobile home park, 70 feet west of the west edge of Gold St., Manhole top 2.5 feet above existing ground, Elev. 280.0 NAVD88

GENERAL NOTES

- UNLESS SHOWN OR STATED OTHERWISE ON THESE DRAWINGS, MATERIALS AND CONSTRUCTION SHALL BE IN ACCORDANCE WITH CITY OF WICHITA SPECIFICATIONS & SPECIAL PROVISIONS.
- CONTRACTOR WILL BE REQUIRED TO PROVIDE A MINIMUM ADVANCE NOTICE OF SEVENTY-TWO (72) HOURS TO UTILITY COMPANIES PRIOR TO STARTING ANY EXCAVATION AS FOLLOWS:

KANSAS ONE-CALL 1-800-344-7233
 OR 687-2470 (LOCAL WICHITA)

THE CONTRACTOR MUST NOTIFY THE FOLLOWING IN CASE OF AN EMERGENCY:

SBC (TELEPHONE) 800-870-8390
 COX COMMUNICATIONS (CABLE) 262-0661
 WESTAR (ELECTRIC) 383-8600
 KANSAS GAS SERVICE (GAS) 832-3101
 CITY OF WICHITA WATER & SEWER MAINT. 262-6000
 BLACK HILLS ENERGY (GAS) 800-303-0357

- THE CONTRACTOR SHALL BE RESPONSIBLE FOR PRESERVING PROPERTY IRONS. THE CONTRACTOR WILL BE REQUIRED TO RE-ESTABLISH ANY PROPERTY IRONS WHICH ARE DAMAGED OR DESTROYED BY HIS CONSTRUCTION OPERATIONS. SUCH IRONS SHALL BE RE-ESTABLISHED BY A LICENSED LAND SURVEYOR IN ACCORDANCE WITH STATE LAWS.
- EXISTING UTILITIES AND THEIR LOCATIONS, AS SHOWN ON THE PLANS REPRESENT THE BEST INFORMATION OBTAINABLE FOR DESIGN. LOCATION INFORMATION HAS BEEN OBTAINED FROM THE VARIOUS UTILITY COMPANIES AND IS EITHER FROM COMPANY RECORD DRAWINGS OR COMPANY PROVIDED FIELD LOCATIONS. THE PLAN LOCATIONS SHOWN ARE NOT GUARANTEED. ADDITIONAL EXISTING UTILITIES MAY ALSO BE ENCOUNTERED.
- RUBBLE FROM THE REMOVAL OF MISCELLANEOUS STRUCTURES AND EXCESS EXCAVATION MATERIAL IS TO BE WASTED SHALL BE DISPOSED OF ON SITES TO BE PROVIDED BY THE CONTRACTOR. THESE SITES SHALL BE APPROVED BY THE ENGINEER AS TO SUITABILITY, APPEARANCE AND SITE LOCATION. LOCATIONS THAT, IN THE OPINION OF THE ENGINEER, WILL LEAVE AN UNSIGHTLY APPEARANCE WILL NOT BE APPROVED. ALL DISPOSAL SITES MUST BE APPROVED BY THE KANSAS DEPARTMENT OF HEALTH AND FLOOD PLAIN WOULD REQUIRE A KANSAS STATE BOARD OF AGRICULTURE PERMIT. ANY MATERIAL DUMPED IN WATERS OF THE UNITED STATES OR WETLANDS IS SUBJECT TO U.S. CORPS OF ENGINEERS PERMITTING REGULATIONS. ANY MATERIAL BURIED OR STOCKPILED BEYOND APPROVED CONSTRUCTION LIMITS WOULD REQUIRE ADDITIONAL ARCHAEOLOGICAL INVESTIGATIONS UNLESS BURIED IN A PREVIOUSLY APPROVED BORROW LOCATION.
- ALL COMPACTION OF EARTHWORK SHALL BE 95 STANDARD DENSITY IN ACCORDANCE WITH ASTM D-698.
- OTHER CONSTRUCTION MAY BE UNDER WAY SIMULTANEOUSLY WITH THIS PROJECT. THE CONTRACTOR SHALL COORDINATE WITH ANY CONTRACTORS CONSTRUCTING OTHER PORTIONS OF THE PROJECT.
- ANY EXCESS EXCAVATION SHALL BE STOCKPILED ON-SITE IN A LOCATION APPROVED BY THE FIELD ENGINEER.
- STAKING, TESTING AND INSPECTION WILL BE PROVIDED BY THE CITY OF WICHITA, UNLESS OTHERWISE NOTED.
- SURVEY WAS PROVIDED BY ABBOTT LAND SURVEY.

- CONTRACTOR SHALL CONSTRUCT BUILDING PADS AS DEFINED ON LOTS 8 & 9, BLOCK 1 TO BOTTOM OF LVC PER THE PROPOSED STEEPLE BAY, WEST MACARTHUR ROAD & SOUTH GOLD STREET GEOTECHNICAL EXPLORATION REPORT PREPARED BY GSI, PROJECT NO. 1873039 DATED APRIL 24, 2018.
- CONTRACTOR SHALL FURTHER COORDINATE MATERIAL & COMPACTION TESTING OF SAID BUILDING PADS WITH A GEOTECHNICAL ENGINEER. CONTRACTOR SHALL PROVIDE CERTIFICATION LETTER FROM A GEOTECHNICAL ENGINEER CERTIFYING THE BUILDING PADS WERE CONSTRUCTED IN ACCORDANCE WITH THE GEOTECHNICAL REPORT. TESTING & CERTIFICATION SHALL BE SUBSIDIARY TO TESTING BID ITEM.

CONSTRUCTION SEQUENCING

- DEMOLITION, FINAL GRADING NORTH OF BUILDING PADS & CERTIFIED BUILDING PADS SHALL BE COMPLETE ON LOTS 8-9, BLOCK 1 BY AUGUST 24, 2018.
- THE CONTRACTOR SHALL COORDINATE THEIR OPERATIONS & ACCOMMODATE OTHER CONTRACTORS THAT WILL BE INSTALLING THE PUBLIC UNDERGROUND IMPROVEMENTS STARTING APPROXIMATELY 6 WEEKS AFTER THE DEMOLITION AND MASS GRADING STARTS. ADDITIONALLY, THE DEMOLITION & EARTHWORK CONTRACTOR SHALL DO THE SAME WITH THE GENERAL CONTRACTOR THAT WILL BE MOBILIZING TO BEGIN SITE & BUILDING IMPROVEMENTS ON LOTS 8-9, BLOCK 1 STARTING APPROXIMATELY AUGUST 27, 2018. ACCESS FOR SAID GENERAL CONTRACTOR SHALL BE SOLELY FROM GOLD STREET.



STORMWATER DRAIN 437
STEEPLE BAY
 WICHITA, KS

TITLE SHEET

PROJECT NO.	468-85318	
DATE	APRIL 2018	
SCALE	1" = 150'	
DESIGNED	DRAWN	CHECKED
SPE	MKB	SPE

SHEET NO.

01 OF 25