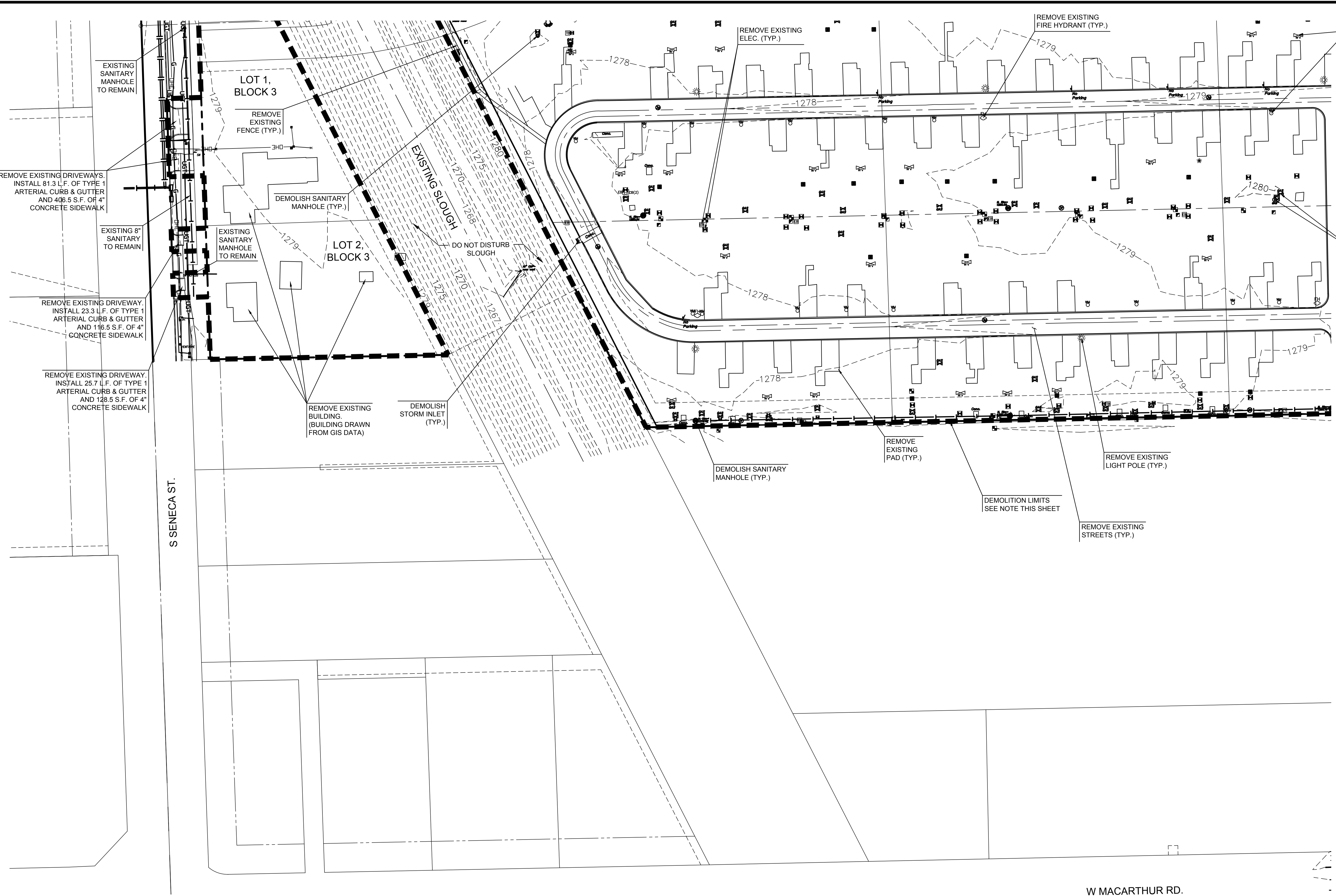
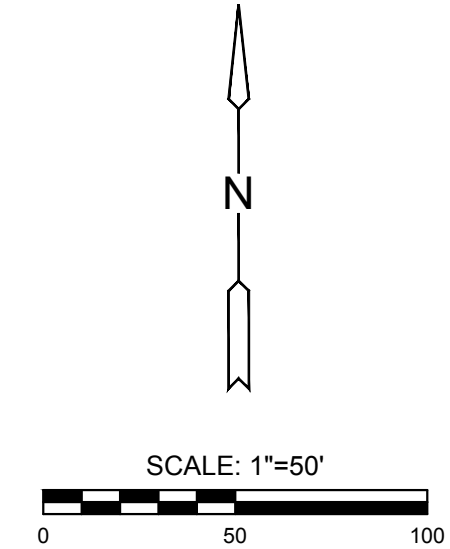


J:\PROJECTS\2017\1701010143_LANGE_STEEPLE BAY_1743_CADD\SHOTS\05_CIVIL\SITE\1743-05-0603.DWG
 PLOTTED: Monday, June 11, 2018 @ 08:17PM



NOTE:
 CONTRACTOR TO DEMOLISH OR ABANDON SANITARY SEWER, STORM SEWER AND WATER PIPES & STRUCTURES PER CITY OF WICHITA SPECIFICATIONS. ALL MISCELLANEOUS ABOVE GRADE UTILITY EQUIPMENT SHALL BE REMOVED; ABANDON CONDUITS. REMOVE ALL TREES, ROOT BALLS, SHRUBS, TRASH, DEBRIS, CURB & GUTTER, CONCRETE PAVEMENT, ASPHALT PAVEMENT, MONUMENT SIGNS, SIGNAGE, BUILDINGS, STAIRS, WALLS, LIGHT FIXTURES/POLES, FENCING, FOUNDATIONS, ETC. REMOVE THESE ITEMS LOCATED WITHIN DEMOLITION LIMITS SHOWN. COST SUBSIDIARY TO "SITE CLEARING", UNLESS OTHERWISE NOTED.



STORMWATER DRAIN #437
STEEPLE BAY
 WICHITA, KS

©2018
 MKEC Engineering
 All Rights Reserved
 www.mkec.com
 These drawings and their contents, including, but not limited to, all concepts, designs, & ideas are the exclusive property of MKEC Engineering (MKEC), and may not be used or reproduced in any way without the express consent of MKEC.

EXISTING CONDITIONS & DEMO PLAN 3

PROJECT NO.	468-85318	
DATE	APRIL 2018	
SCALE	1" = 50'	
DESIGNED	DRAWN	CHECKED
SPE	MKB	SPE

NO.	REVISION	DATE