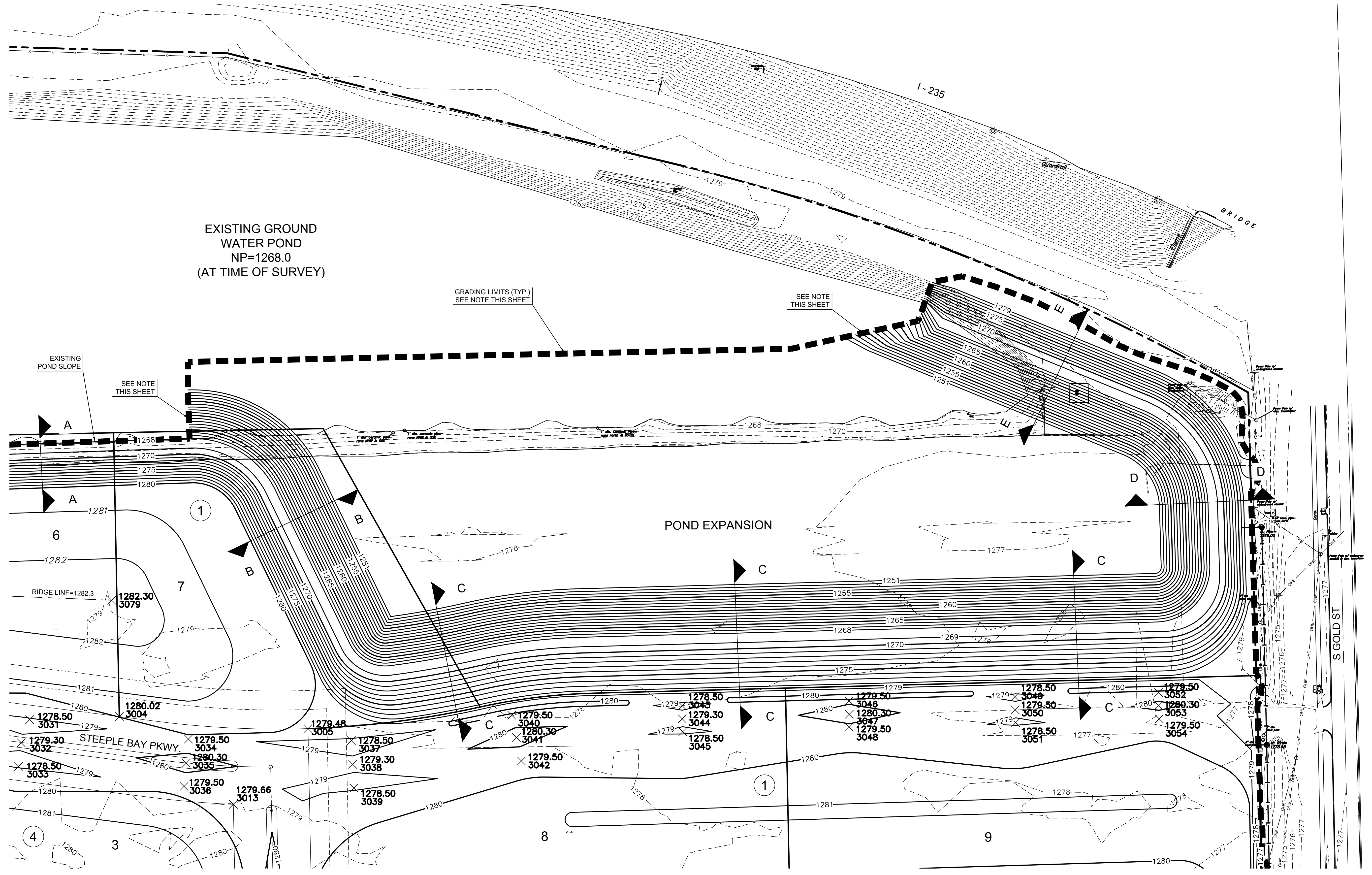


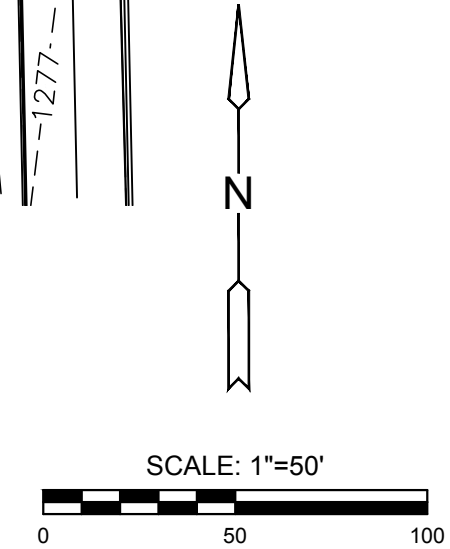
PLOTTED: Monday, June 11, 2018 @ 08:46PM  
 J:\PROJECTS\2017\1010143\_LANES\_STEEPLE\_BAY\_1743\_CADD\SHOTS\CIVIL\GRD1743-05-1202.DWG



**NOTE:**  
 GRADING LIMITS UNDER NORMAL POOL ARE ASSUMED.  
 CONTRACTOR TO TIE IN POND SLOPES TO ACTUAL FIELD CONDITIONS.

**LEGEND**

- 1370 --- EXIST. CONTOUR
- 1370 — PROP. CONTOUR



©2018  
 MKEC Engineering  
 All Rights Reserved  
 www.mkec.com  
 These drawings and their contents, including, but not limited to, all concepts, designs, & ideas are the exclusive property of MKEC Engineering (MKEC), and may not be used or reproduced in any way without the express consent of MKEC.

**GRADING PLAN**  
2

PROJECT NO.	468-85318	
DATE	APRIL 2018	
SCALE	1" = 50'	
DESIGNED	DRAWN	CHECKED
SPE	MKB	SPE

NO.	REVISION	DATE