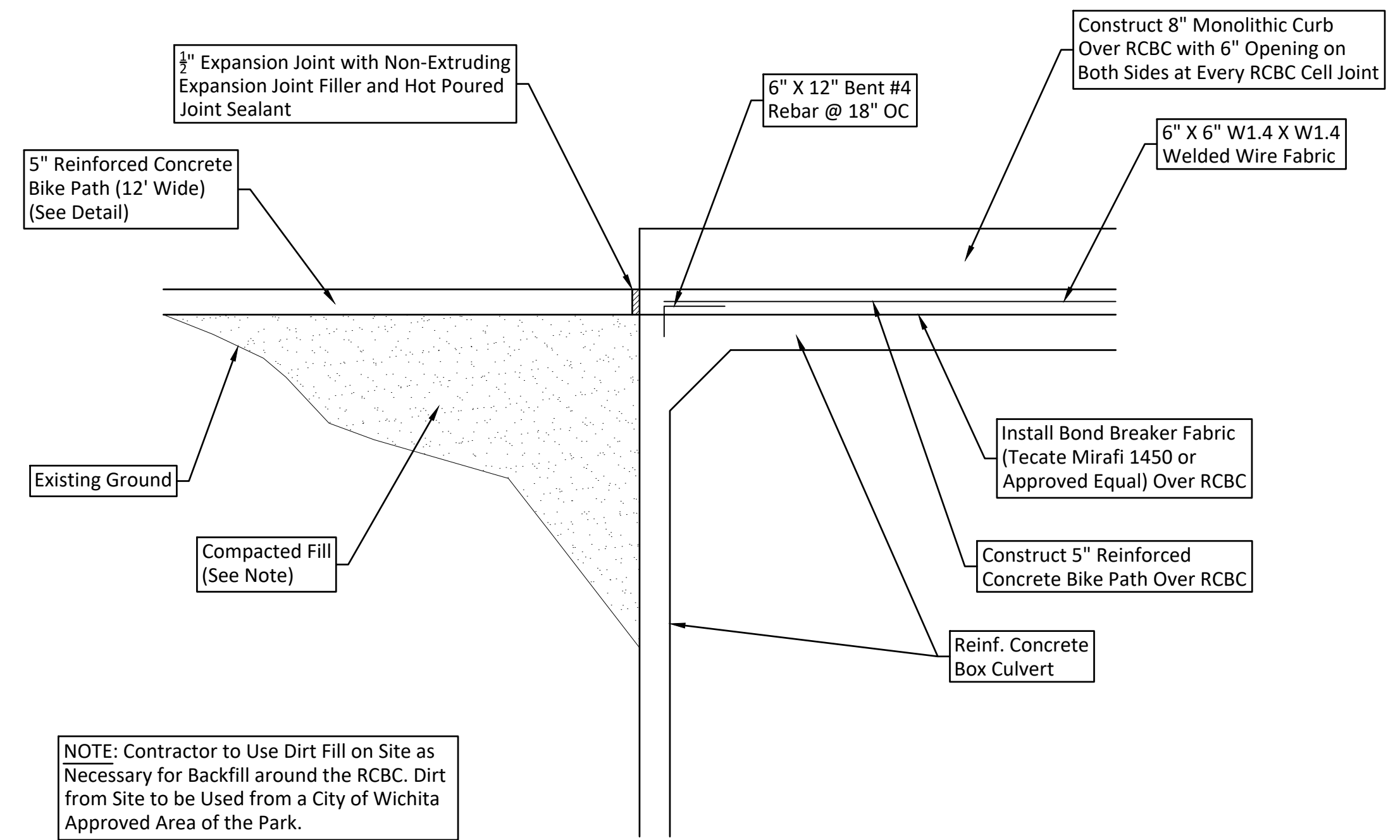
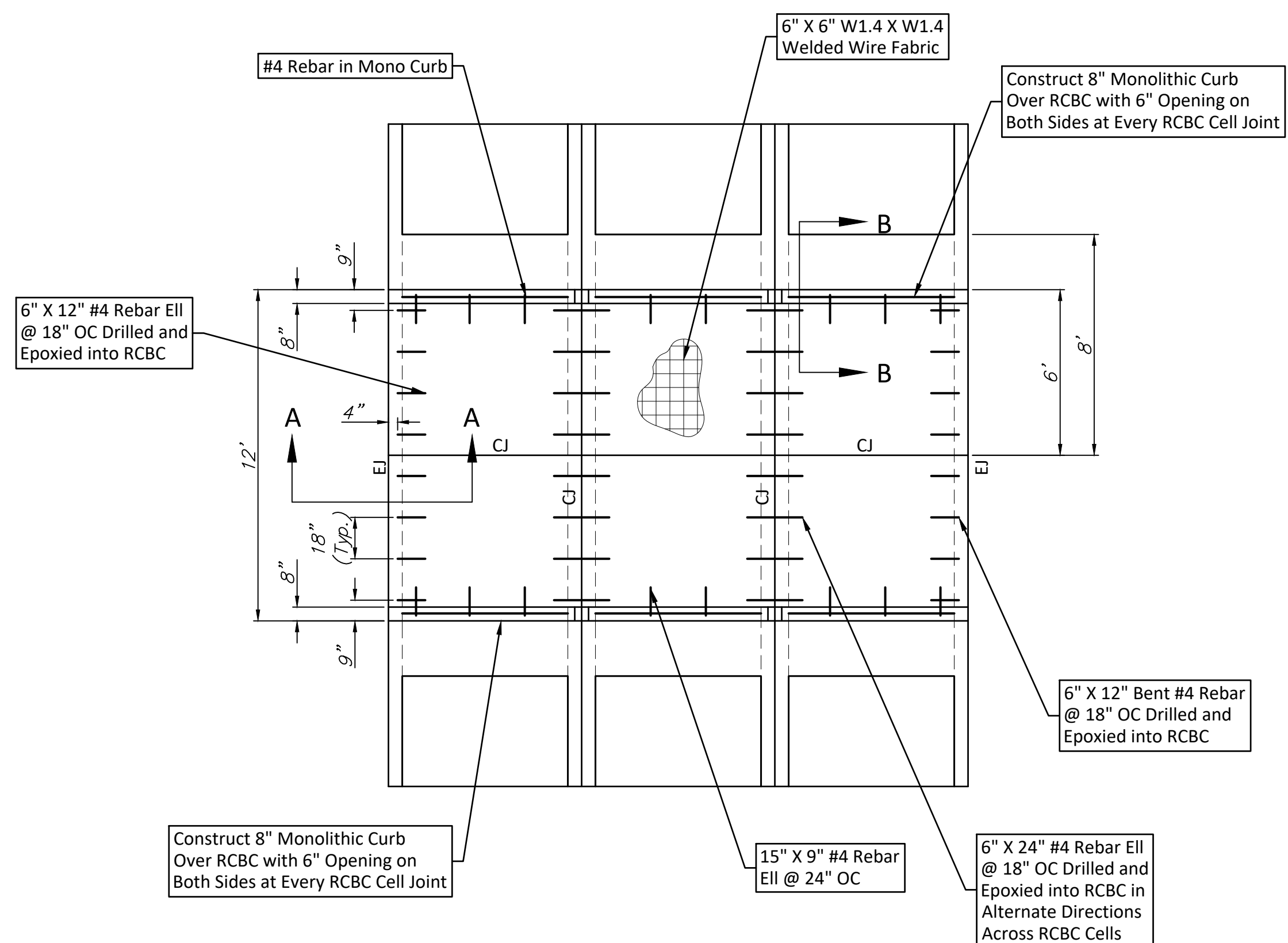


LOW WATER CROSSING 2 DETAIL

1"=4'

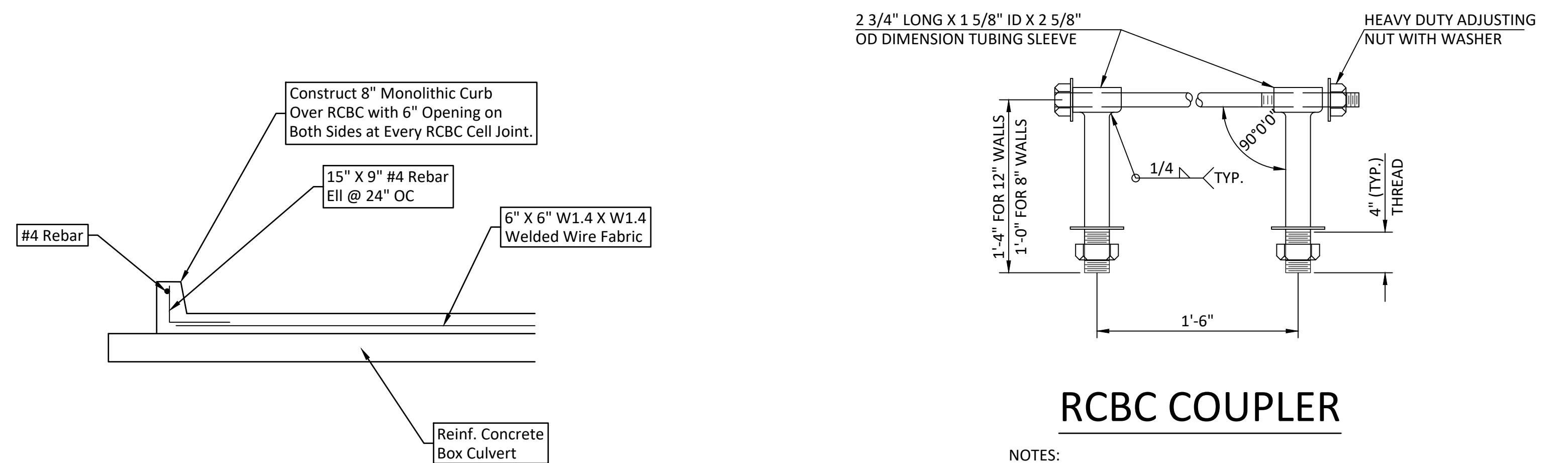


SECTION A-A



LOW WATER CROSSING 1 DETAIL

1"=4'



RCBC COUPLER

- NOTES:
1. BOLTS TO BE A-36 1 1/2" DIAMETER.
 2. BOLTS, NUTS, WASHERS AND SLEEVES TO BE ZINC PLATED.
 3. WASHERS TO BE 3 1/2" O.D. X 7 GAUGE.
 4. SHIP WITH NUTS AND WASHERS PLACED ON BOLTS.

NOTE: Contractor to be Responsible for Bolting RCBC's Together. Box Manufacturer to Design RCBC's with the Necessary Modifications for the Contractor to Bolt Boxes Together Based on the Detail Below or with an Engineer Approved Connection.