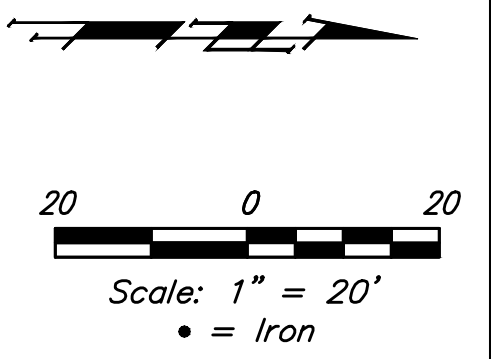


BENCHMARKS:

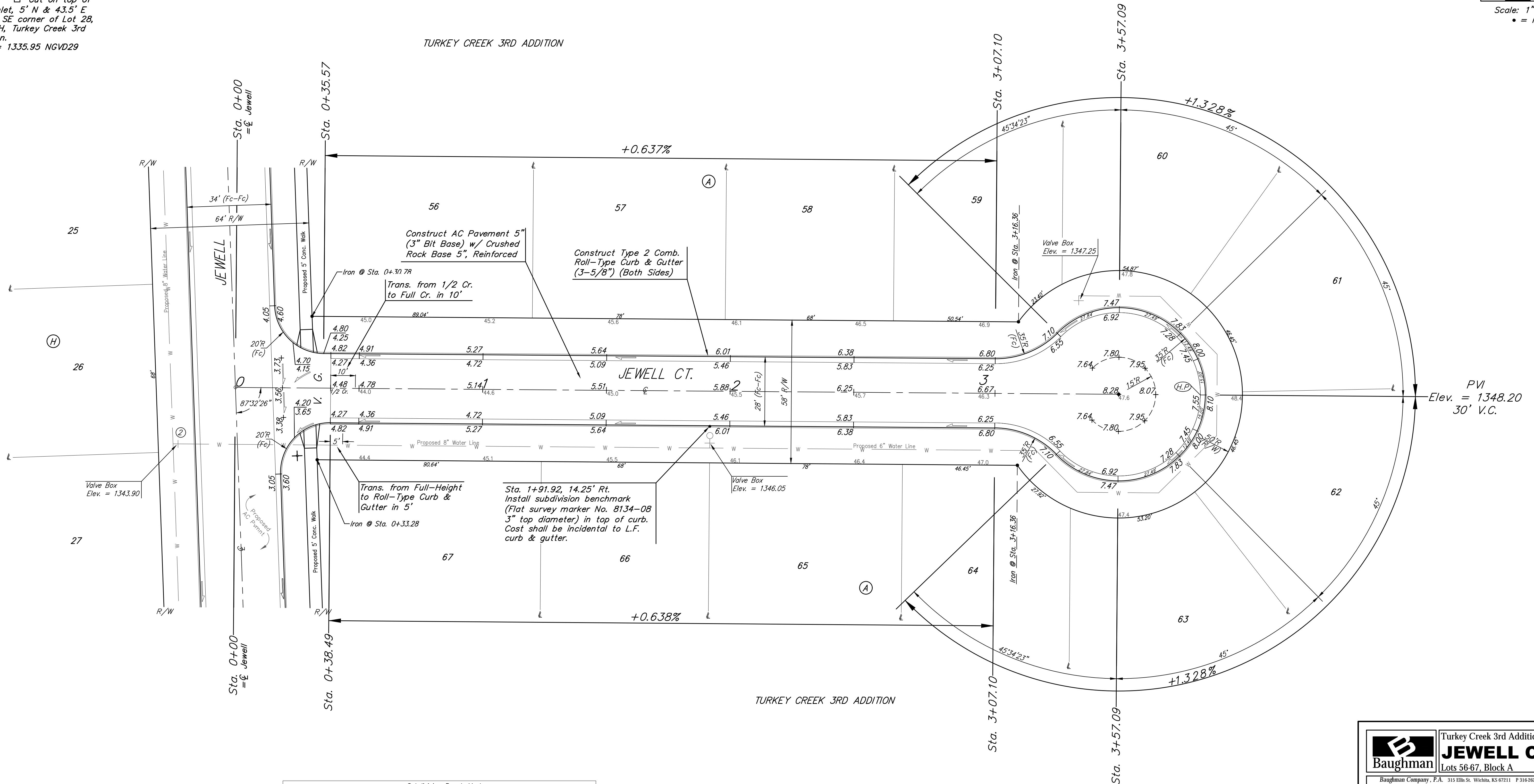
BM #1: "□" Cut in top of curb, south of SE corner of Lot 82, Block A, Turkey Creek 3rd Addition.
Elev. = 1335.49 NGVD29

BM #2: "□" Cut on top of curb inlet, SW of the SE corner of Lot 81, Block A, Turkey Creek 3rd Addition.
Elev. = 1335.95 NGVD29

BM #3: "□" Cut on top of yard inlet, 5' N & 43.5' E of the SE corner of Lot 28, Block H, Turkey Creek 3rd Addition.
Elev. = 1335.95 NGVD29



TURKEY CREEK 3RD ADDITION



Subdivision Bench Marks		
Street & Station	Location Description	Elevation
Jewell Ct 1+91.92, 14.25' Rt.	Adjacent to Fire Hydrant at NW Corner of Lot 66, Block A	
Jewell Ct 2+03.182, 14.25' Lt.	Adjacent to Fire Hydrant at NE Corner of Lot 69, Block A	

Roll type curb & gutter to be constructed on the pavement on this sheet.
Top of curb elevation are given for full height curb.

	Turkey Creek 3rd Addition - Phase 3B	
	JEWELL CT	
Lots 56-67, Block A		
Baughman Company, P.A. 315 Ellis St. Wichita, KS 67211 P 316-262-7271 F 316-262-0149 ENGINEERING SURVEYING PLANNING LANDSCAPE ARCHITECTURE		
PROJECT NUMBER 472-85232	DESIGN NBW	DRAWN JAK
REVISIONS:	APPROVED	DATE 4/24/18
	SCALE Noted	SHEET 10 OF 31