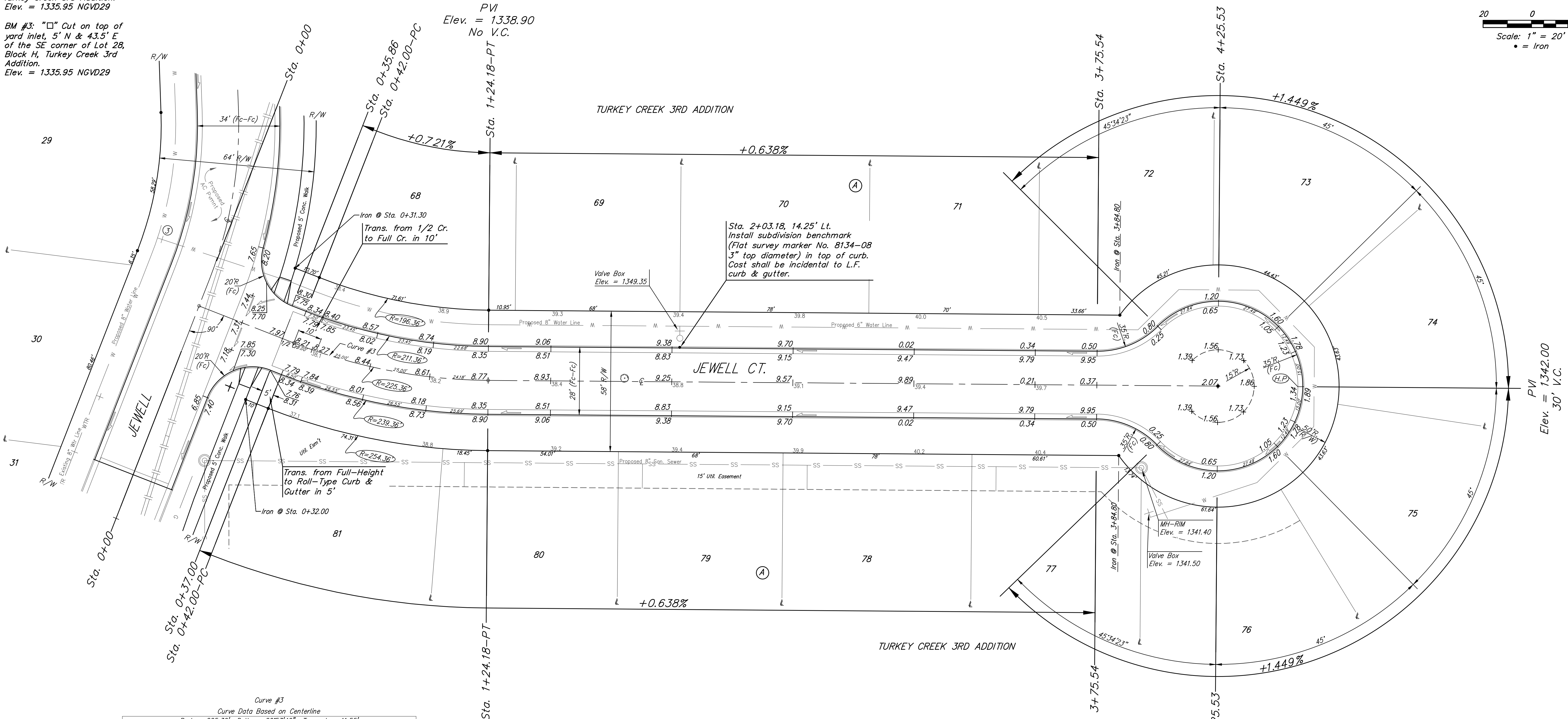
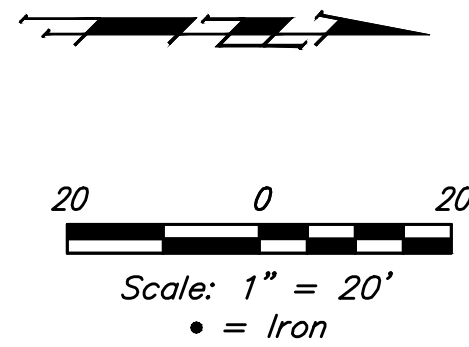


BENCHMARKS:

BM #1: "□" Cut in top of curb, south of SE corner of Lot 82, Block A, Turkey Creek 3rd Addition.
Elev. = 1335.49 NGVD29

BM #2: "□" Cut on top of curb inlet, SW of the SE corner of Lot 81, Block A, Turkey Creek 3rd Addition.
Elev. = 1335.95 NGVD29

BM #3: "□" Cut on top of yard inlet, 5' N & 43.5' E of the SE corner of Lot 28, Block H, Turkey Creek 3rd Addition.
Elev. = 1335.95 NGVD29



Curve #3
Curve Data Based on Centerline

Rad. = 225.36' Delta = 20°53'40" Tangent = 41.55'
Arc = 82.18' L.C. = 81.73' Def./Ft. = 7.62757 Min.

Station	Arc	Face Chord Length		Defl.	Total Defl.
		8' Left	8' Right		
0+42.00	-	-	-	0°00'00"	0°00'00"
0+50.00	8.00'	7.22'	8.78'	1°01'01"	1°01'01"
0+75.00	25.00'	22.55'	27.43'	3°10'42"	4°11'43"
1+00.00	25.00'	22.55'	27.43'	3°10'41"	7°22'24"
1+24.18	24.18'	21.81'	26.53'	3°04'26"	10°26'50"

Roll type curb & gutter to be constructed on the pavement on this sheet.
Top of curb elevation are given for full height curb.

Baughman Turkey Creek 3rd Addition - Phase 3B
JEWELL CT
Lots 68-81, Block A

Baughman Company, P.A. 315 Ellis St. Wichita, KS 67211 P 316-262-7271 F 316-262-0149
ENGINEERING | SURVEYING | PLANNING | LANDSCAPE ARCHITECTURE

PROJECT NUMBER 472-85232	DESIGN NBW	DRAWN JAK
REVISIONS:	APPROVED	DATE 4/24/18
	SCALE Noted	SHEET 11 OF 31

C:\Projects\Turkey Creek 3rd\Engineering\Phase 3B\STR_1802E933\STR PLANS.dwg